

DISCUSSION PAPER SERIES

No. 2748

**UNCERTAINTY ON MONETARY
POLICY AND THE EXPECTATIONS
MODEL OF THE TERM STRUCTURE
OF INTEREST RATES**

Carlo A Favero and Federico Mosca

INTERNATIONAL MACROECONOMICS



Centre for Economic Policy Research

www.cepr.org

Available online at:

www.cepr.org/pubs/dps/DP2748.asp

UNCERTAINTY ON MONETARY POLICY AND THE EXPECTATIONS MODEL OF THE TERM STRUCTURE OF INTEREST RATES

Carlo A Favero, IGER, Università Bocconi, Milano and CEPR
Federico Mosca, IGER, Università Bocconi, Milano

Discussion Paper No. 2748
March 2001

Centre for Economic Policy Research
90–98 Goswell Rd, London EC1V 7RR, UK
Tel: (44 20) 7878 2900, Fax: (44 20) 7878 2999
Email: cepr@cepr.org, Website: www.cepr.org

This Discussion Paper is issued under the auspices of the Centre's research programme in **International Macroeconomics**. Any opinions expressed here are those of the author(s) and not those of the Centre for Economic Policy Research. Research disseminated by CEPR may include views on policy, but the Centre itself takes no institutional policy positions.

The Centre for Economic Policy Research was established in 1983 as a private educational charity, to promote independent analysis and public discussion of open economies and the relations among them. It is pluralist and non-partisan, bringing economic research to bear on the analysis of medium- and long-run policy questions. Institutional (core) finance for the Centre has been provided through major grants from the Economic and Social Research Council, under which an ESRC Resource Centre operates within CEPR; the Esmée Fairbairn Charitable Trust; and the Bank of England. These organizations do not give prior review to the Centre's publications, nor do they necessarily endorse the views expressed therein.

These Discussion Papers often represent preliminary or incomplete work, circulated to encourage discussion and comment. Citation and use of such a paper should take account of its provisional character.

Copyright: Carlo A Favero and Federico Mosca

CEPR Discussion Paper No. 2748

March 2001

ABSTRACT

Uncertainty on Monetary Policy and the Expectations Model of the Term Structure of Interest Rates

In this Paper we estimate jointly a forward-looking reaction function for the three-month rate along with a term structure relationship linking the six-month interest rates to current and expected future three-month rates. In our empirical model the response of the six-month interest rates to current and future three-month interest rates is allowed to depend on uncertainty on monetary policy. The expectation theory cannot be rejected in periods of low uncertainty on monetary policy.

JEL Classification: E44, E52, F41

Keywords: expectations model, forward-looking reaction functions, term structure of interest rates

Carlo A Favero
IGIER
Università Bocconi
Via Salasco 5
20136 Milano
ITALY

Tel: (39 02) 5836 3306

Fax: (39 02) 5836 3302

Email: carlo.favero@uni-bocconi.it

Federico Mosca
IGIER

Università Bocconi
Via Salasco 5
20136 Milano
ITALY

Email: federico.mosca@uni-bocconi.it

For further Discussion Papers by this author see:
www.cepr.org/pubs/new-dps/dplist.asp?authorid=110142

For further Discussion Papers by this author see:
www.cepr.org/pubs/new-dps/dplist.asp?authorid=153520

Submitted 17 February 2001

NON-TECHNICAL SUMMARY

The empirical failure of the expectations theory of the term structure of interest rates is generally attributed either to systematic expectations errors, or to shifts in the risk premia. In this Paper we concentrate on the short end of the term structure, considering the behaviour of three-month and six-month interest rates, to analyse explicitly the importance of uncertainty in monetary policy in explaining the failure of the expectations model.

Expectations errors on short-term interest rates are usually related to peso problems or to their very low predictability. In a famous study Mankiw and Miron (1986), using data on a three- and six-month maturity, found evidence in favour of the expectation theory prior to the founding of the Federal Reserve System in 1915. Interestingly, they show that the shift in regime occurred with the founding of the Fed, and led to a remarkable decrease in the predictability of short-term interest rates. Rudebusch (1995) and Balduzzi et al. (1997), expand on this evidence by looking at more recent data.

The claim of very low predictability of policy rates contradicts a growing body of empirical literature, which has established interest rate rules as a convenient way to model and interpret monetary policy. An interest rate rule relates the setting of a short-term money market rate (such as the Federal Funds rate in the US) to a central bank's perception of the inflation and output gaps. Taylor (1993) – from which this literature originates – simply postulated a plausible rule and found that it accurately describes how monetary policy actually has been conducted over the period 1987–92. The original work by Taylor has been refined in a number of Papers by Clarida, Gali and Gertler, (1998, 1999, 2000), who have shown that a forward-looking version of the Taylor rule with some interest rate persistence not only tracks the data well, but is also capable of explaining the high inflation in the 1970s in terms of an accommodating behaviour towards inflation in the pre-Volcker era. We propose to assess explicitly the role of misprediction on monetary policy by estimating jointly a forward-looking interest rate rule, determining the three-month rates given macroeconomic conditions, and an expectations model, determining the six-month rates given current and expected future three-month rates. As both the equations in our model are forward looking, we apply GMM as the most natural approach to the solution of our estimation problem. Joint estimation allows measurement of the importance of expectation errors on three-month rates in explaining deviations from the expectation model. Within our framework, expectation errors on the short-term interest rates reflect uncertainty on monetary policy directly. Estimation of our model on monthly US data over the period 1984–99 points towards the rejection of the expectations model over the whole sample but also provides evidence for a clear reduction in uncertainty on monetary policy from 1994 onwards. Allowing then for a role of uncertainty of monetary policy in shaping the response of the six-month interest rates to current and future three-month interest rates, we find that such a response is fully compatible with the predictions of the expectations model from 1994 onwards.

1 Introduction

The empirical failure of the expectations theory of the term structure of interest rates is generally attributed either to systematic expectations errors, or to shifts in the risk premia (see the textbook treatment in Campbell, Lo, MacKinlay, 1997, Chapter 10). In this paper we concentrate on the short end of the term structure, considering the behaviour of three-month and six-month interest rates, to explicitly analyze the importance of uncertainty in monetary policy in explaining the failure of the expectations model.

Expectations errors on short-term interest rates are usually related to peso problems or to their very low predictability. In a famous study Mankiw and Miron, 1986, using data on a three and six month maturity, found evidence in favour of the expectation theory prior to the founding of the Federal Reserve System in 1915. Interestingly they show that the shift in regime occurred with the founding of the Fed led to a remarkable decrease in the predictability of short-term interest rates. Rudebusch, 1995, and Balduzzi et al., 1997, expands on this evidence by looking at more recent data.

The claim of very low predictability of policy rates contradicts a growing body of empirical literature which has established interest rate rules as a convenient way to model and interpret monetary policy. An interest rate rule relates the setting of a short-term money market rate (such as the Federal Funds rate in the US) to a central bank's perception of the inflation and output gaps. Taylor, 1993, from which this literature originates, simply postulated a plausible rule, and found that it accurately describes how monetary policy actually has been conducted over the period 1987-1992. The original work by Taylor has been refined in a number of papers by Clarida, Gali and

Gertler, 1998, 1999, 2000, who have shown that a forward-looking version of the Taylor-rule with some interest rates persistence not only track the data well but is also capable of explaining the high inflation in the seventies in terms of an accommodating behaviour towards inflation in the pre-Volcker era. We propose to assess explicitly the role of mis-prediction on monetary policy by estimating jointly a forward-looking interest rate rule, determining the three-month rates given macroeconomic conditions, and an expectations model, determining the six-month rates given current and expected future three-month rates. As both equations in our model are forward looking, we apply GMM as the most natural approach to the solution of our estimation problem.

2 Interest rate rules and the short-end of the term structure of interest rates: evidence from the US.

Our empirical analysis is based on the estimation of the following model:

$$r_{t,t+3} = (1 - \rho) [\bar{r} + a_1 E_t (\pi_{t+12} - \pi^*) + a_2 E_t (y_t - y_t^*)] + \rho r_{t-1,t+2} + u_{1t}. \quad (1)$$

$$r_{t,t+6} = b_1 + b_2 r_{t,t+3} + b_3 E_t r_{t+3,t+6} + u_{2t} \quad (2)$$

where $r_{t,t+i}$ is the interest rate observed at month t on a zero-coupon bond with maturity at month $t+i$, π_t is inflation at time t and y_t is output at time t , π^* is the target level for inflation set by the monetary policy maker and y^* is the natural level of output.

The first equation in the model is a standard forward-looking Taylor rule with interest rate smoothing, proposed by Clarida Gali and Gertler,

1998,1999, 2000, and successfully implemented to model monetary policy in a number of industrialized countries. The error term u_{1t} can be rationalized by considering that central bank applies a partial adjustment model, around a target interest rates, described by the following two equations:

$$r_{t,t+3}^* = \bar{r} + a_1 E_t (\pi_{t+12} - \pi^*) + a_2 E_t (y_t - y_t^*), \quad (3)$$

$$r_{t,t+3} = (1 - \rho) r_{t,t+3}^* + \rho r_{t-1,t+2} + u_{1t}, \quad (4)$$

where r^* is the target interest rate and \bar{r} is the equilibrium value for r^* . Note that, if the central bank is setting policy rates optimally, then a_1 and a_2 are convolutions of parameters describing the structure of the economy and parameters describing preferences of the monetary policy maker.

The second equation is a consistent with the expectations model of the term structure, which is obtained exactly when $b_2 = b_3 = 0.5$. The error term u_{2t} captures random fluctuations in the risk premium. The hypothesis of absence of correlation between u_{2t} and the regressors in the second equation is strong but, as we shall see, testable in the estimation framework we are going to use.

By eliminating the unobserved forecast variables, we obtain the following specification of our model:

$$r_{t,t+3} = (1 - \rho) \bar{r} + a_1 (1 - \rho) (\pi_{t+12} - \pi^*) + a_2 (1 - \rho) (y_t - y_t^*) + \rho r_{t-1,t+2} + \epsilon_{1t}, \quad (5)$$

$$r_{t,t+6} = b_1 + b_2 r_{t,t+3} + b_3 r_{t+3,t+6} + \epsilon_{2t} \quad (6)$$

where

$$\epsilon_{1t} = u_{1t} - a_1 (1 - \rho) (\pi_{t+12} - E_t \pi_{t+12}) - a_2 (1 - \rho) (y_t - E_t y_t).$$

$$\epsilon_{2t} = u_{2t} - b_3 (r_{t+3,t+6} - E_t r_{t+3,t+6})$$

Then, since $E_t [\epsilon_{1t} | \mathbf{I}_t] = 0$, $E_t [\epsilon_{2t} | \mathbf{I}_t] = 0$, where \mathbf{I}_t includes all the variables in the central bank's information set at the time policy rates are chosen, we have a set of orthogonality conditions which can be used to estimate the parameters of interest by GMM. Moreover, joint estimation, allows to explicitly measure expectations errors on policy rates and assess their role in explaining deviations from the expectations model.

2.1 Results

We consider monthly data for the US economy over the sample 1984:1-1999:5. The data span a period of interest rate targeting by the Fed (see Bernanke-Mihov, 1998) for which ample evidence is available on the empirical success of forward-looking Taylor rules. We consider the following set of orthogonality conditions to implement GMM estimation:

$$E_t [\mathbf{f}_t | \mathbf{I}_t] = 0$$

$$\mathbf{f}_t = \begin{bmatrix} r_{t,t+3} - [(1 - \rho) \bar{r} + a_1 (1 - \rho) (\pi_{t+12} - \pi^*) + a_2 (1 - \rho) (y_t - y_t^*) - \rho r_{t-1,t+2}] \\ r_{t,t+6} - (b_1 + b_2 r_{t,t+3} + b_3 r_{t+3,t+6}) \end{bmatrix}$$

Several empirical problems have to be solved to implement GMM. First, empirical counterparts have to be specified for π^* and y_t^* . Following the original choice by Taylor, 1993, supported by further empirical evidence in Clarida et al., 1999, we set target inflation at two per cent. We derive instead potential output by applying an Hodrick-Prescott filter (with a smoothing parameter of 14400) to our measure for output, which is seasonally adjusted industrial production.¹ Second, a set of instruments has to be chosen to mimic the relevant information set \mathbf{I}_t , we consider lagged policy rates, four lags of inflation, four lags of the output gap, the annual change in commodity price inflation, the annual change in employment in

¹We derive the filtered series by considering a larger sample (1984:1-2000:5) than the one actually used for estimation of our two-equation model (1984:1-1999:5).

the non-farm sector. Third, given that we have substituted observed values to expected values for estimation, we have implemented GMM by using the correction for heteroscedasticity and autocorrelation of unknown form with a lag truncation parameter of 12 and choosing Bartlett weights to ensure positive definiteness of the estimated variance-covariance matrix, see Davidson-MacKinnon(1993). The results of estimation are reported in Table 1.

Insert Table 1 here

The estimation of the Taylor rule on three-month rates gives standard results, illustrating that the model commonly adopted for the Federal funds rate performs equally well when applied to the three-month rate. There is a strong persistence, the long-run equilibrium nominal rate is 4.65 which, given that we have set the target for inflation at two per cent, delivers an equilibrium real interest rate of 2.65. The response of three-month rate to deviations of inflation from target is higher than one, therefore real three-month rate are raised in presence of inflationary shocks and a necessary condition for stability of equilibrium at the target level for inflation is satisfied. The point estimate of the response of the three-month rate to the output gap is slightly higher than those reported in the literature but not significantly different.

The explicit estimation of the relation between the six-month rate and current and future three-month rates rejects the expectations model. In fact, the sum of coefficients on current and future three-month rates adds up to one but the current short-term interest rate is over-weighted with a coefficient of 0.8 and the future short-term interest rate is under-weighted with a coefficient of 0.2. Such numerical values imply that the change in the short-

term rate reacts too little to the lagged spread between long and short rates although, the perverse response, usually found in the empirical literature (see Campbell et al., 1997), generated by a negative relation between current change in short term interest rates and lagged spreads is not compatible with our estimates. The point estimate of the constant in this relation is small and does not differ significantly from zero. The J-test for the validity of instruments does not reject the null at the five per cent level, although the tail probability is rather close to five per cent. Therefore, we have no strong evidence of violation of the postulated orthogonality conditions.

The relative strength of our proposed methodology is that it allows a direct assessment of the importance of uncertainty on monetary policy and therefore of expectations errors on future short-term rates in explaining deviations from the expectations model. We report in Figure 1 actual and fitted values and residuals from the estimation of the Taylor rule over the whole sample.

Insert Figure 1 here

We note that the pre-1994 variance of residuals is clearly higher than the post-1994 variance: after 1994 the uncertainty on monetary policy predicted as predicted by a Taylor rule is clearly reduced. Interestingly, from 1994 onwards the Fed adopted the practice of deciding modifications of the Federal fund target on occasion of the Federal Open Market Committee meetings, whose calendar has been made public in advance. To assess the potential impact of the change in uncertainty on the expectations model we re-estimate the equation for the six-month interest rates by allowing for a role of uncertainty in determining the response of such rates to current and future three-month rates:

$$r_{t,t+3} = (1 - \rho) [\bar{r} + a_1 E_t (\pi_{t+12} - \pi^*) + a_2 E_t (y_t - y_t^*)] + \rho r_{t-1,t+2} + u_{1t}. \quad (7)$$

$$r_{t,t+6} = b_1 + (b_2 + b_{21} DUM94) r_{t,t+3} + (b_3 + b_{31} DUM94) E_t r_{t+3,t+6} + u_{2t} \quad (8)$$

where *DUM94* is a dummy variable taking values of 1 from 1994:1 onwards and zero everywhere else. The results from estimation are reported in Table 2.

Insert Table 2 here

The estimated modified model show that uncertainty on monetary policy is capable of explaining totally the deviations from the expectations model observed in our original system. In fact, the weights on current and future short-term rates in the second equation are respectively one and zero in the period of before 1994, but after 1994 the null of equal weights of one half cannot be rejected, with point estimates lying respectively at 0.6 and 0.4. Interestingly, a small but significant constant risk premium of 14 basis points now results from the estimation of the forward-looking model for six-month rates.

3 Conclusions

In this paper we have jointly estimated a forward-looking reaction function for the three-month rate along with a forward-looking term structure relationship linking the six-month interest rates to current and expected future three-month rates. Joint estimation allows measurement of the importance of expectations errors on three-month rate in explaining deviations from

the expectations model. Within our framework, expectations errors on the short-term interest rates reflect directly uncertainty on monetary policy. Estimation of our model on monthly US data over the period 1984-1999, points towards the rejection of the expectations model over the whole sample but also provides evidence for a clear reduction in uncertainty on monetary policy from 1994 onwards. Allowing then for a role of uncertainty of monetary policy in shaping the response of the six-month interest rates to current and future three-month interest rate, we find that such a response is fully compatible with the predictions of the expectations model from 1994 onwards.

References

- Balduzzi P., Bertola G., and Foresi S., 1997 "A model of target changes and the term structure of interest rates" *Journal of Monetary Economics*, 24, 371-399.
- Bernanke, B. S. and Mihov, I. (1998). 'Measuring monetary policy'. *Quarterly Journal of Economics*, 113, 3: 869-902.
- Campbell J., A. Lo and C. MacKinlay, 1997, *The Econometrics of Financial Markets*, Princeton University Press: Princeton
- Clarida R., J. Gali and M. Gertler, 1998 "Monetary policy rules in practice: some international evidence" *European Economic Review*, 42,
- Clarida R., J. Gali and M. Gertler, 1999 "The science of monetary policy: A new-Keynesian perspective", *Journal of Economic Literature*, XXXVII (4), 1661-1707.
- Clarida R., J. Gali and M. Gertler, 2000 "Monetary policy rules and macroeconomic stability: evidence and some theory", *The Quarterly Journal of Economics*, 115, 1, 147-180
- Cook T. and T. Hahn, 1989, "The effects of changes in the federal funds target on market interest rates in the 1970s", *Journal of Monetary Economics*, 24, 331-351
- Davidson, R., and MacKinnon, J. G. (1993). *Estimation and inference in econometrics*. Oxford: Oxford University Press.
- Mankiw and Miron (1986)

Rudebusch G.D.,1995 "Federal reserve interest rate targeting, rational expectations, and the term structure." *Journal of Monetary Economics*, 35, 245-274.

Soderlind P. and L.Svensson(1997) "New techniques to extract market expectations from financial instruments", *Journal of Monetary Economics*, 40, 383-429

Taylor J.B. (1993) "Discretion versus policy rules in practice", *Carnegie-Rochester Conference Series on Public Policy*, 39, 195-214

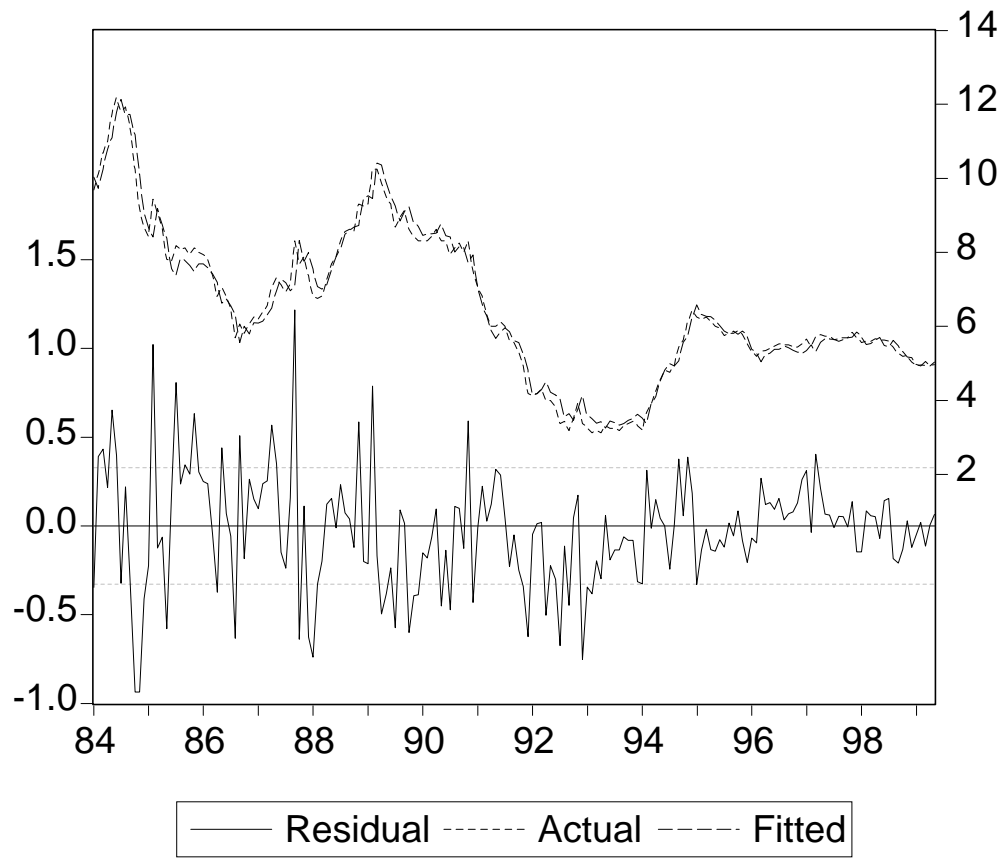


Figure 1: actual, fitted values and residuals from the Taylor-rule for three-month interest rates

TABLE 1. GMM estimation of $E_t[\mathbf{f}_t | \mathbf{I}_t] = 0$, Sample 1984:1-1999:5

$$f_{1t} = r_{t,t+3} - [(1 - \rho)\bar{r} + a_1(1 - \rho)(\pi_{t+12} - \pi^*) + a_2(1 - \rho)(y_t - y_t^*) - \rho r_{t-1,t+2}]$$

$$f_{2t} = r_{t,t+6} - (b_1 + b_2 r_{t,t+3} + b_3 r_{t+3,t+6})$$

Coefficient	Estimate	Std. Error	<i>t</i> -Statistic	Prob.
\bar{r}	4.65	0.37	12.35	0.00
ρ	0.90	0.025	35.48	0.00
a_1	1.28	0.29	4.43	0.00
a_2	1.12	0.24	4.59	0.00
b_1	0.023	0.05	0.46	0.64
b_2	0.80	0.038	20.94	0.00
b_3	0.20	0.036	5.36	0.00

S.E. of regression in f_{1t} 0.32 Mean dependent var in f_{1t} 6.52

S.E. of regression in f_{2t} 0.19 Mean dependent var in f_{2t} 6.63

J-Statistic $\chi^2(8) = 15.189(0.055)$

Instruments: $r_{t-1,t+2}, y_{t-1}, y_{t-2}, y_{t-3}, y_{t-4}, \pi_{t-1}, \pi_{t-2}, \pi_{t-3}, \pi_{t-4}, \Delta_{12}lpcm_t, \Delta_{12}le_t$

y_t : log of seasonally adjusted industrial production

y_t^* : HP filtered (smoothing parameter=14400) y_t

π_t : annual CPI inflation

π^* : two per cent

$r_{t,t+3}$: three-month Eurodollar rate

$r_{t,t+6}$: six-month Eurodollar rate

$\Delta_{12}lpcm_t$: annual change in IMF commodity price index

$\Delta_{12}le_t$: annual change in employment in non-farm sector

All series are taken from Datastream

TABLE 2. GMM estimation of $E_t[\mathbf{f}_t | \mathbf{I}_t] = 0$, Sample 1984:1-1999:5

$$f_{1t} = r_{t,t+3} - [(1 - \rho)\bar{r} + a_1(1 - \rho)(\pi_{t+12} - \pi^*) + a_2(1 - \rho)(y_t - y_t^*) - \rho r_{t-1,t+2}]$$

$$f_{2t} = r_{t,t+6} - (b_1 + (b_2 + b_{21}DUM94)r_{t,t+3} + (b_3 + b_{31}DUM94)E_t r_{t+3,t+6})$$

Coefficient	Estimate	Std. Error	t-Statistic	Prob.
\bar{r}	4.87	0.26	18.37	0.00
ρ	0.90	0.02	38.85	0.00
a_1	1.09	0.22	4.78	0.00
a_2	0.80	0.16	4.90	0.00
b_1	0.12	0.043	2.90	0.005
b_2	1.00	0.048	20.94	0.00
b_{21}	-0.41	0.19	-2.13	0.03
b_3	-0.008	0.047	-0.17	0.87
b_{31}	0.40	0.19	2.13	0.03

S.E. of regression in f_{1t} 0.32 Mean dependent var in f_{1t} 6.52

S.E. of regression in f_{2t} 0.16 Mean dependent var in f_{2t} 6.63

J-Statistic $\chi^2(9) = 17.76(0.04)$

Wald test $b_2 + b_{21} = 0.5, b_3 + b_{31} = 0.5, \chi^2(2) = 1.58(0.45)$

Instruments: $r_{t-1,t+2}, y_{t-1}, y_{t-2}, y_{t-3}, y_{t-4}, \pi_{t-1}, \pi_{t-2}, \pi_{t-3}, \pi_{t-4}, \Delta_{12}lpcm_t, \Delta_{12}le_t, DUM94$

y_t : log of seasonally adjusted industrial production

y_t^* : HP filtered (smoothing parameter=14400) y_t

π_t : annual CPI inflation

π^* : two per cent

$r_{t,t+3}$: three-month Eurodollar rate

$r_{t,t+6}$: six-month Eurodollar rate

$\Delta_{12}lpcm_t$: annual change in IMF commodity price index

$\Delta_{12}le_t$: annual change in employment in non-farm sector

$DUM94$: dummy variable taking values of one from 1994:1 onwards and 0 everywhere else