

DISCUSSION PAPER SERIES

No. 8080

ASSET PRICES, NEWS SHOCKS AND THE CURRENT ACCOUNT

Marcel Fratzscher and Roland Straub

INTERNATIONAL MACROECONOMICS



Centre for Economic Policy Research

www.cepr.org

Available online at:

www.cepr.org/pubs/dps/DP8080sp

ASSET PRICES, NEWS SHOCKS AND THE CURRENT ACCOUNT

Marcel Fratzscher, European Central Bank and CEPR
Roland Straub, European Central Bank

Discussion Paper No. 8080
November 2010

Centre for Economic Policy Research
53–56 Gt Sutton St, London EC1V 0DG, UK
Tel: (44 20) 7183 8801, Fax: (44 20) 7183 8820
Email: cepr@cepr.org, Website: www.cepr.org

This Discussion Paper is issued under the auspices of the Centre's research programme in **INTERNATIONAL MACROECONOMICS**. Any opinions expressed here are those of the author(s) and not those of the Centre for Economic Policy Research. Research disseminated by CEPR may include views on policy, but the Centre itself takes no institutional policy positions.

The Centre for Economic Policy Research was established in 1983 as an educational charity, to promote independent analysis and public discussion of open economies and the relations among them. It is pluralist and non-partisan, bringing economic research to bear on the analysis of medium- and long-run policy questions.

These Discussion Papers often represent preliminary or incomplete work, circulated to encourage discussion and comment. Citation and use of such a paper should take account of its provisional character.

Copyright: Marcel Fratzscher and Roland Straub

CEPR Discussion Paper No. 8080

November 2010

ABSTRACT

Asset Prices, News Shocks and the Current Account*

We analyze the relationship between asset prices and current account positions estimating a Bayesian VAR for a broad set of 42 industrialized and emerging market countries. To derive model-based identifying restrictions, we model asset price shocks as news shocks about future productivity in a two-country DSGE model. Such shocks are found to exert sizeable effects on the current account positions of countries. Moreover, the effects are highly heterogeneous across countries, for instance following a 10 percent shock to domestic equity prices relative to the rest of the world the US trade balance will worsen by 1.0 percentage points, but much less so for most other economies. We find that this heterogeneity appears to be linked to the financial market depth and equity home bias of countries. Moreover, the channels via wealth effects and via the real exchange rate are important for understanding the heterogeneity in the transmission.

JEL Classification: E2, F32, F40 and G1

Keywords: asset prices, Bayesian VAR, current account, financial markets, home bias, identification, news shocks, wealth effects

Marcel Fratzscher
European Central Bank
Kaiserstrasse 29
D-60311 Frankfurt/Main
GERMANY

Email: marcel.fratzscher@ecb.int

For further Discussion Papers by this author see:
www.cepr.org/pubs/new-dps/dplist.asp?authorid=149533

Roland Straub
European Central Bank
Kaiserstrasse 29
D-60311 Frankfurt/Main
GERMANY

Email: roland.straub@ecb.int

For further Discussion Papers by this author see:
www.cepr.org/pubs/new-dps/dplist.asp?authorid=158701

* We would like to thank the participants at the conference on "Global Liquidity" at the Hong Kong Monetary Authority, the 2010 Bundesbank Spring Conference, seminar participants at the Bank of England as well as Gianluca Benigno, Philipp Harms, Akito Matsumoto, Roberto Rigobon, John Rogers, Shang-Jin Wei, Ken West and James Yetman for comments and discussion. The views expressed in this paper are those of the authors and do not necessarily reflect those of the European Central Bank.

Submitted 17 October 2010

1 Introduction

Current account positions have hardly ever been so dispersed globally as they are today, despite the 2008-09 financial crisis. It is not only that the largest economy, the United States, has been recording large current account deficits for several years, but other industrialized countries, such as the UK and Australia, and some emerging markets and transition economies have had similar or even larger deficits. By contrast, countries such as China, Japan and oil exporters register corresponding large trade surpluses. At the same time, asset prices have gone through a marked cycle over the past decade, with equity markets rising substantially in the second half of the 1990s and in 2002-06 and declining in 2001-02 and 2008. The financial market crisis of 2008-09 has made the importance of asset prices for the global economy more than apparent. Despite the financial crisis, the role of asset prices for the global economy will most likely increase further as financial markets deepen and emerging economies liberalize and integrate.

The paper analyses the relationship between asset price fluctuations and the trade balance for a broad set of 42 industrialized and emerging market economies. The objective is not only to grasp the magnitude of the effect of asset prices fluctuations on trade, but also to understand the channels through which this effect materializes. A rise in asset prices affects net exports through a wealth channel as households adjust saving and consumption decisions, and through an exchange rate and terms of trade channel, altering the relative prices of domestic and foreign goods. Equally importantly, asset prices may exert different effects across economies, as those with deeper yet more closed financial markets may respond more strongly.

A key challenge we face is the structural interpretation and identification of exogenous increases in asset price. Asset price fluctuations may reflect standard macroeconomic supply/ demand shocks or policy shocks. Yet, the literature emphasizes that asset prices may exert a partly autonomous influence on the economy not related to current fundamentals. For example, Beaudry and Portier (2006) argue that innovations to stock prices that are orthogonal to current TFP growth rates are correlated with future TFP growth. Also, Stock and Watson (1999) show that stock prices lead the business cycle. In other words, changes in expectations are reflected in today's asset prices as these represent the net discounted value of all future fundamentals.¹

As a result, we derive the sign restrictions for the structural VAR from a two-country DSGE model, in which exogenous fluctuations in asset prices not related to fundamentals, following the results of Beaudry and Portier (2006), are modelled as news shocks - i.e. anticipated changes to technology². For plausible ranges of the parameters, we show that such news shocks yield theoretical impulse responses for relative (domestic minus foreign) consumption, inflation, equity prices and interest rates in the short-run that can be strictly distinguished from common supply shocks (realized productivity) and monetary policy shocks.

We then employ a Bayesian VAR, following Canova and De Nicoló (2002), Uhlig (2005)

¹This is also related to the work by Engel and Rogers (2006), who show that the large size of the US current account deficit is consistent with expectations of an increasing share of US output in the world. An alternative interpretation is that asset price movements may reflect rational bubbles, as in Kraay and Ventura (2005) and Ventura (2001), who argue that the sharp increase in asset prices over the past decade may largely have reflected a bubble, which was rational because of market expectations that this increase may be persistent.

²See also Schmitt-Grohe and Uribe (2008) and Fukuiwara et al. (2008)

and Peersman and Straub (2009), using the sign restrictions derived from this two-country DSGE model to test for the effect of exogenous asset price fluctuations in the data. This methodology not only requires imposing a relatively small and intuitive number of identification restrictions, but importantly it also allows us to distinguish asset price shocks from other types of shocks. Because we model exogenous asset price increases as news shocks, we use the terms news shocks and asset price shocks interchangeably throughout the paper.

For a core set of 16 industrialized countries during the period 1974-2007 and an extended sample of an additional 26 mostly emerging markets during 1990-2007, our empirical findings show that asset prices exert a sizeable effect on the trade balance of countries. The channels through which equity prices influence net exports are both through wealth effects on private consumption and to some extent through the exchange rate. An increase in asset prices tends to have a positive impact on short-term interest rates and inflation, and leads to an appreciation of the real effective exchange rate and an increase in consumption. Moreover, we find a large degree of cross-country heterogeneity in the impulse response pattern. The US trade balance is among the most sensitive as net exports, on average, decline by more than 1.0 percentage points in response to a 10% increase in US equity prices relative to the rest of the world. The trade balances of most other countries react substantially less.

Why is the effect of asset price shocks so different across countries and what explains the heterogeneity? We relate this cross-country pattern to financial openness and depth, trade openness as well as monetary policy and fiscal policy. While the analysis does not offer an empirical test of different hypotheses, its intention is to illustrate how different factors may influence the transmission of asset price shocks. As to the role of the financial channel, wealth effects of an asset price shock should be more important in an economy in which the size of financial wealth is larger, in which financial markets are more liquid and in which fewer households are liquidity constrained. Indeed, empirically the sensitivity of the trade balance appears to be more important in countries in which the equity wealth of households is relatively large, as well as in countries that have a higher home bias in their equity holdings. This applies for instance to the United States, which not only has a deep equity market, but where also a relatively large share of equity wealth is held domestically.

Another potential determinant is trade openness, as an asset price shock may have a larger effect on net exports through the wealth channel in more open economies. However, trade openness does not appear to be related in the expected way to the impact of asset price on net exports, and we find that the picture is also much more mixed for the role of monetary policy.

The sample period for our benchmark model intentionally ends in 2007 so as to ensure that the empirical findings are not driven by the 2008-09 financial crisis. Yet, the 2008-09 financial crisis may be a useful benchmark to assess how well the empirical findings of the paper for the period 1974-2007 hold up for the crisis period. After all, the 2008-09 crisis was primarily financial in nature. Hence, as the final step of the analysis, we investigate how well the actual adjustments in trade balances, private consumption and exchange rates globally during the crisis match the predicted adjustments based on our empirically estimated elasticities for the pre-crisis period. We find evidence that our model indeed captures reasonably well in particular the adjustments in trade balances, and to some extent in real effective exchange rates during the crisis. More specifically, countries that had relatively larger declines in equity markets during the crisis and/or relatively large elasticities of their trade balance and exchange rate to equity market shocks before the crisis indeed experienced (larger) improvements in their trade balance and a real exchange rate depreciation during the crisis.

The paper is related to two fields of the literature. A first strand focuses on the drivers of the large and persistent global current account imbalances. Several papers emphasize the importance of a "saving glut" (Bernanke 2005) in many emerging markets and commodity-exporting countries, partly stemming from the underdevelopment and lack of integration of financial markets in those economies (Caballero et al. 2006, Ju and Wei 2006), as well as the increasing role of ensuing valuation effects on gross international asset positions (Gourinchas and Rey 2007, Lane and Milesi-Ferretti 2005) and a pre-cautionary motive as a rationale for high saving rates (e.g. Gruber and Kamin 2007, Chinn and Ito 2007). Other studies to explain the dispersion in current account positions stress the role of productivity differentials (e.g. Corsetti et al. 2006, Bussiere et al. 2005), or link it to the "great moderation" which has induced a decline in income volatility and uncertainty, at least prior to the current financial crisis (Fogli and Perri 2006).

Second, a vast literature identifies the effect of price changes in various financial assets on private consumption (e.g. Betraut 2002, Case et al. 2005). Most of this literature finds a significant effect of both equity wealth and housing wealth on private consumption. However, there is still substantial controversy as to the magnitude and precise functioning of this channel as for instance exemplified by the conflicting results found by Palumbo, Rudd, and Whelan (2006) and Lettau and Ludvigson (2004). The effect of such a wealth channel on the external dimension of countries, in particular the current account and the exchange rate, has so far received little attention in the literature. Fratzscher, Juvenal and Sarno (2007) focus on the United States, showing that in particular housing price shocks have been important drivers of the variation of the US trade balance, whereas exchange rates account for a much smaller share, while Fratzscher and Straub (2009) extend this empirical analysis to G7 economies and to equity markets. From a current policy perspective, this implies that an adjustment in the US dollar may do little to the US trade deficit, or that the US dollar decline would have to be very large as suggested by several studies (Blanchard et al. 2005, Obstfeld and Rogoff 2005, Krugman 2007, Fratzscher 2008).

The paper is organized as follows. Section 2 derives sign restrictions for the empirical identification of asset price shocks based on a two-country DSGE model. The empirical model, benchmark results and various robustness tests are presented in section 3. A discussion of the results and of the potential role for financial depth, trade openness and monetary and fiscal policies follows in section 4. Section 5 concludes.

2 Identification

In this section, we will present a two-country dynamic stochastic general equilibrium (DSGE), which is utilized for deriving the identification restriction in the empirical part. Note that for reasons described below, we are interested in the qualitative response of selected relative (i.e. home vs. foreign) macro variables following exogenous shocks. In what follows, we describe the structure of the model.

2.1 Households

Representative households in the home country maximize lifetime utility by choosing purchases of the consumption good, C_t given the following quite standard utility index:

$$E_t \left[\sum_{k=0}^{\infty} \beta^k \left(\frac{1}{1-\sigma} (C_{t+k})^{1-\sigma} - KL_{t+k} \right) \right],$$

where β is the discount factor, σ denotes risk aversion. Aggregate consumption C_t is defined across all home and foreign goods, and its functional form is given by the following constant elasticity aggregator:

$$C_t = \left[(\mu)^{\frac{1}{\theta}} (C_{H,t})^{1-\frac{1}{\theta}} + (1-\mu)^{\frac{1}{\theta}} (C_{F,t})^{1-\frac{1}{\theta}} \right]^{\frac{\theta}{\theta-1}}$$

where $C_{H,t}$ and $C_{F,t}$ are indices of individual home and foreign produced goods with elasticity of substitution between individual goods denoted by θ , and degree of home bias μ . The corresponding demand for domestic and foreign goods can be written as follows:

$$\begin{aligned} C_{H,t} &= \mu \left(\frac{P_{H,t}}{P_t} \right)^{-\theta} C_t, \\ C_{F,t} &= (1-\mu) \left(\frac{P_{F,t}}{P_t} \right)^{-\theta} C_t, \end{aligned}$$

Utility maximization is subject to following budget constraint in nominal terms:

$$P_t C_t + W_{t+1} = w_t L_t + \Pi_t + P_t \sum_{k=1}^N \alpha_{k,t-1} r_{k,t} \quad (1)$$

where W_t denoted the real value of nominal wealth for the home agent, w_t is the wage, and Π_t is the profit stream of the home firm accrues to the home country households. The final term represents the total return on the home country portfolio, which comprises N assets. The term $\alpha_{k,t-1}$ represents the real holdings of asset k , brought into period t from

the period $t-1$, and $r_{k,t}$ is the period t real return on this asset. From the definition of wealth it must be that $W_t = \sum_{k=1}^N \alpha_{k,t-1}$, that is total period $t-1$ investment in assets must add up to beginning of period t wealth. The optimal consumption leisure trade-off implies:

$$\frac{w_t}{P_t} C_t^{-\sigma} = K \quad (2)$$

And the optimal portfolio is characterized by:

$$C_t^{-\sigma} = \beta E_t C_{t+1}^{-\sigma} r_{N,t+1} \quad (3)$$

$$\beta E_t C_{t+1}^{-\sigma} (r_{k,t+1} - r_{N,t+1}) = 0 \quad (4)$$

where $k = 1 \dots N - 1$.

Note that home equities represent a claim on home aggregate profits Π_t (defined below). The real payoff to a unit of the home equity purchased in period t as defined to be $\frac{\Pi_{t+1}}{P_{t+1}} + Z_{E,t+1}$, where $Z_{E,t}$ is the real price of home equity. Thus the gross real rate of return on the home equity is $r_{E,t+1} = \frac{\Pi_{t+1}/P_{t+1} + Z_{E,t+1}}{Z_{E,t}}$. The real exchange rate Q_t in turn is defined as $Q_t = \frac{S_t P_t^*}{P_t}$ where S_t is the nominal exchange rate and P_t^* is the price level in the foreign economy.

2.2 Firms

There are two types of firms. A continuum of monopolistically competitive primary-goods producing firms indexed by $i \in [0, 1]$, each of which produces a single differentiated intermediate good, Y_t . The final-goods producing firms combine intermediate goods using a CES function to produce the final goods.

2.2.1 Primary-goods firms

Each primary-good producing firm i produces its differentiated output using a linear production function in labour

$$Y_t(i) = A_t L_t \quad (5)$$

The corresponding marginal cost is denoted by

$$MC_t = \frac{W_t}{P_t A_t} \quad (6)$$

Firms optimize expected profits using:

$$E_t \left[\sum_{k=0}^{\infty} F_{t,t+1} \xi^k \Pi_{t+k}(i) \right],$$

Here, $F_{t,t+1}$ is the firm's discount rate while $\Pi_t(i) = P_t(i) Y_t(i) - MC_t Y_t(i)$ are period- t nominal dividends yielded. Note that the firm's discount rate depends in this set up also on the parameter γ . Hence, we obtain the following first-order condition characterizing the firm's optimal pricing decision for its output sold:

$$E_t \left[\sum_{k=0}^{\infty} F_{t,t+1} \xi^k \left(\tilde{P}_t(i) - \frac{\phi}{\phi - 1} MC_{t+k} \right) Y_{t+k}(i) \right] = 0.$$

This expression states that in those intermediate-good markets in which price contracts are re-optimised, these are set so as to equate the firms' discounted sum of expected revenues to the discounted sum of expected marginal cost. In the absence of price staggering ($\xi = 0$), the factor $\phi/(\phi - 1)$ represents the markup of the price charged in domestic markets over nominal marginal cost, reflecting the degree of monopoly power on the part of the intermediate-good firms.

2.2.2 Final-good firms

Final good Y_t is produced using the following CES technology:

$$Y_t = \left(\int_0^1 (Y_t(i))^{1 - \frac{1}{\phi}} di \right)^{\frac{\phi}{\phi - 1}},$$

As a result, the demand functions for individual goods, and the corresponding final good price aggregator have the following form:

$$Y_t(i) = \left(\frac{P_t(i)}{P_t} \right)^{-\phi} Y_t, \quad (7)$$

$$P_t = \left(\int_0^1 (P_t(i))^{1-\phi} di \right)^{\frac{1}{1-\phi}}, \quad (8)$$

2.3 Goods Market Clearing

Aggregating the production function across firms using (5) and using the individual demand function (7), we obtain the following condition for goods market equilibrium:

$$Y_t \int_0^1 \left(\frac{P_t(i)}{P_t} \right)^{-\phi} di = A_t N_t \quad (9)$$

Furthermore, domestic GDP is determined by demand from home and foreign consumers:

$$Y_t = \left(\frac{P_{H,t}}{P_t} \right)^{-\theta} (\mu C_t) + (1 - \mu) \left(\frac{P_{H,t}}{S_t P_t^*} \right)^{-\theta} C_t^*$$

assuming that C_t^* is the level of consumption in the foreign economy.

2.4 Monetary policy, the foreign economy and exogenous shocks

The monetary authority is assumed to follow a Taylor-type interest-rate rule specified in terms of annual consumer-price inflation and quarterly output growth,

$$R_t = \phi_R R_{t-1} + (1 - \phi_R) \left[\phi_\Pi \left(\frac{P_t}{P_{t-1}} \right) + \phi_{gY} \left(\frac{Y_t}{Y_{t-1}} \right) \right] + \varepsilon_{R,t},$$

where the term $\varepsilon_{R,t}$ represents a serially uncorrelated monetary policy shock.

We introduce news shocks in the model in the same way as in Schmitt-Grohe and Uribe (2008) and Fukuiwara et al. (2008). We write the shocks process for technology (in log-linear terms) as:

$$a_t = \rho^a a_{t-1} + \eta_t^a \quad (10)$$

where the innovation, η_t^a , is split into two components. An anticipated component, $\eta_t^{a,0}$, and an unanticipated component, $\eta_t^{a,news}$, written as:

$$\eta_t^a = \eta_t^{a,0} + \eta_t^{a,news} \quad (11)$$

where $\eta_t^{a,news} = \sum_h^H \eta_{t-h}^{a,h}$ and $\eta_{t-h}^{a,h}$ is the h-period ahead news about total factor productivity (TFP) anticipated by the agents at period t , and H the longest horizon over which

shocks are anticipated by agents³. The innovations are iid normal. In the following exercises, we will set $H = 4$, although taking e.g. longer horizons over which agents anticipate TFP changes does not alter qualitatively the response of the economy.

The foreign economy has an analogous representation. Thus foreign consumers choose consumption and assets in a same manner, and the foreign firms adjust prices in the same way as defined above. The models equilibrium dynamics is solved following log-linearization around the non-stochastic zero inflation steady-state.

2.5 Deriving the sign restrictions

In this section we discuss the set of sign restrictions that we derive from the impulse response functions of the presented model. Our model based impulse responses serve therefore as a prior for identifying the shocks in our VAR⁴. In this respect, it might be helpful to reiterate the reasoning behind looking at the dynamic response following news shocks in our model. We are interested in investigating the role of asset market structure and the reaction of macro aggregates to innovation in stock prices not related to current fundamentals. Beaudry and Portier (2006) argue that innovations to stock prices that are orthogonal to current fundamentals are correlated with future TFP growth.

Note that news driven business cycles have been also considered as a possible explanation for the emergence of boom-bust cycles. However, standard DSGE models with news have difficulties in generating boom-bust cycles observed in the data. The standard arguments for the emergence of boom-bust cycles is as follow. Expected positive productivity shocks increase jointly investment, consumption, output and inflation today. If productivity developments in the future fail to meet expectations households and firms adjust their behavior and a recession will emerge. Standard business cycle models, however, fail to produce the positive comovement of macro variables following news shocks. Good news about future productivity imply a positive wealth effects which, under standard household preferences, increases consumption and leisure. As a results hours worked will fall, and output declines (see Beaudry and Portier, 2007).

To mitigate the well known problem of strong wealth effects in standard DSGE model, Jaimovich and Rebelo (2009) propose a generalization of the King, Plosser, and Rebelo (1988) and of the Greenwood, Hercowitz and Huffman (1988) preferences that can produce an expansion in output following news shocks⁵. Nevertheless, due to the uncertainty surrounding the output response implied by news shocks in business cycle models, we restraint in what follows to utilize any restrictions derived from the impulse response of output in our model. On the other hand, there seems to be a general agreement in the literature, which is also confirmed below in our simulation exercises, that news about future productivity developments have a positive impact on consumption, interest rates and nominal variables (see for example Christiano, Ilut, Motto and Rostagno, 2007). Jaimovich and Rebelo (2008) show that also in a simple small open economy neoclassical model positive news to future

³We have also experimented with other specifications where news are serially correlated, but these did not change the qualitative results in this section.

⁴The derived model-based sign restrictions do also mitigate the consequences of non-invertibility of the moving average representation in equilibrium data under technology foresight discussed in Leeper, Walker and Yang (2008). The model, as we will show later, can clearly differentiate the IRFs of news shocks from other fundametal shocks such as (current) technology and monetary policy. In this respect, the model based derivation eases the foresight problem ex-post through the identification restriction.

⁵Additional importnat ingredients in their model are investment adjustment costs and variable capacity utilization.

TFP growth also trigger a rise in consumption and interest rates.

In the next step, we set up a two-country DSGE model with nominal rigidities to analyze the joint relative (domestic vs. foreign) response of macro variables following news shocks. Studying the relative response of variables is important since our VAR is written in relative terms as this allows us later in our VAR to differentiate between idiosyncratic and global shocks.

In the first step, we parameterize the model using values for the structural parameters generally utilized in the literature. We set the subjective discount rate β at 0.99. The Calvo parameters determining the degree of nominal price rigidities θ equals 0.75. In the monetary policy rule, we restrict the inflation response coefficient ϕ_{Π} at 2, the output growth response ϕ_{gY} is set at 0.5 and the degree of interest rate smoothing ϕ_R equals 0.8. Also, we set the parameter determining the degree of monopolistic competition in the goods market ϕ at 6, the degree of home bias equals μ is 0.8. The degree of risk aversion σ is set to 2, while the autoregressive coefficients in the model ρ^i are all set to 0.9.

Table 1: Parameter values

Parameter	Description	Range
β	discount factor	[0.985, 0.995]
σ	risk aversion coefficient	[1, 3]
ϕ	degree of monopolistic competition in the goods market	[3, 6]
θ	elasticity of substitution between domestic and foreign goods	[0.1, 3]
μ	degree of home bias	[0.5, 0.8]
ξ	degree of nominal rigidities in the goods market	[0.5, 0.8]
ϕ_{Π}	coefficient on inflation in the monetary policy rule	[1.5, 3]
ϕ_{gY}	coefficient on output in the monetary policy rule	[0.2, 1]
ϕ_R	degree of interest rate smoothing	[0.5, 0.9]
ρ^i	persistence of shocks	[0.5, 0.99]

A crucial parameter for determining the international transmission of shocks in DSGE models is θ , the intratemporal elasticity of substitution. To give prominence to the importance of this parameter, in Figure 1, we show the impulse responses of domestic variables under $\theta = 1.5$ (domestic and foreign goods are substitutes) and $\theta = 0.5$ (domestic and foreign goods are complements). As expected, (transitory) productivity shocks increase consumption and reduce inflation and interest rates. If domestic and foreign goods are substitutes, i.e. $\theta = 1.5$, the domestic economy is running a trade balance surplus. The rise in aggregate demand and the simultaneous rise in the relative price of a foreign good shifts demand towards home goods triggering a trade balance surplus on impact. Alternatively, if domestic and foreign goods are complements, i.e. $\theta = 0.5$, an increase in demand for home good will increase the demand for the foreign good simultaneously. But since the relative price of the foreign good has increased, the country will run a trade balance deficit under the chosen calibration⁶.

In Figure 2, news shocks about future productivity result in qualitatively similar impulse responses except the response of inflation. Inflation will rise following news shocks, since

⁶In fact, the sign of the trade balance response will be determined by the interaction of the intertemporal elasticity of substitution, the degree of home bias, the intratemporal elasticity of substitution, and the persistence of the productivity shock.

the wealth effect and the associated surge in demand materializes earlier than the resulting increase in productivity. Note also that news shocks trigger a more persistent rise in equity prices. This is in line with the results of Beaudry and Portier (2006) who argue that the joint behavior of stock prices and TFP is largely driven by a shock that does not effect productivity in the short run, and therefore does not look like a standard technology shock, but affects technology with some delay. As following unanticipated productivity shocks, the response of the trade balance is highly sensitive to the parametrization of the model. It is interesting to note that when $\theta = 0.5$, the rise in domestic inflation eliminates the negative response of the trade balance on impact. This is because the valuation channel through changes in relative prices is less important compared to the case following unanticipated productivity shocks as domestic inflation increases on impact.

In Figure 3, we show that a positive monetary policy shock (a reduction in short-term interest rates) implies an increase in consumption and a rise in inflation and equity prices. Note that the response of interest rates is the main difference between news shocks and monetary policy shocks under the chosen parametrization⁷.

In the next step, we test the sensitivity of the derived sign restrictions to parameter uncertainty and to a specification using relative variables. We assume that the structural parameters are uniformly distributed over the selected parameter range, and draw a random value for each parameter from the intervals presented in Table 1 and calculate the corresponding impulse response functions of the model. This exercise is repeated for 500,000 simulations. The median, 84th and 16th percentiles of all the conditional responses are shown in Figures 4-6. We show the relative impulse response functions (i.e. the log difference between domestic and foreign variables) derived from the calibrated model to ensure consistency with the specification of variables in the VAR. The sign of the impulse response functions are in line with the results shown for the domestic variables under the baseline calibration. For example, the sign of the relative inflation impulse response following a news shock is positive for a wide range of structural parameter⁸. There are, however, a few notable exception. First, relative equity prices (measured as the ratio of home equity prices to foreign equity prices measured in domestic currency) following productivity and monetary policy shocks cover an equally large area of both positive and negative responses. At the same time, recall that in the model domestic asset prices increase following productivity and expansionary monetary policy shocks. The gap between the results is explained by the reaction of the real exchange rate. In both cases, the real exchange rate depreciates resulting in a positive valuation of foreign equity prices counteracting under certain parameterization, the rise in domestic equity prices. The corresponding robust sign restrictions

⁷We have also analysed the effects of government spending shock in our model, and potential sign restriction associated with it. The problem with regards to the identification of government spending shock is related to the fact that in standard RBC and New-Keynesian model, an exogenous rise in government consumption is always associated with a fall in private consumption, while model with non-separable utility or some sort of limited asset market participation can imply a positive fiscal multipliers. A proper identification of shocks, taking into account this inherent model uncertainty, require therefore restrictions on the consumption-output ratio (see Peersman and Straub, 2008). We address this issue in the empirical exercise by conducting sensitivity analysis on the specification of the VAR by including output into the data set, and adding a restriction on the consumption output ratio.

⁸The rise in inflation, the main difference of the impulse response function compared to a unanticipated productivity shock, depends obviously on the parameterization of the model. The key parameters are thereby the elasticity of substitution between domestic and foreign goods θ , and the risk aversion coefficient σ , and the anticipated persistence of the future productivity shock. These parameters determine the wealth effect of the news shock in the model influencing thereby the response of inflation. In our simulation exercise, we show that for a wide range of parameter values the wealth effect is strong enough to induce a rise in inflation.

are shown in Table 2.

Table 2: Theoretical Impulse Response Functions

	consumption	inflation	interest rate	equity prices
Technology shock	↑	↓		
News shock	↑	↑	↑	↑
Monetary policy shock	↑	↑	↓	

The model presented above separates news shock from the standard macroeconomic shocks to productivity and monetary policy, by highlighting the links to wealth effects generated by changes in future productivity, and the limited supply side response on impact. The restriction that we have derived for the relative variables are in line with the results presented in the news literature. Note that, due to the uncertainty surrounding the trade balance response, we restrain from imposing any restriction derived from the model. In other words, we let the data to speak for itself. Keeping these points in mind, we turn now to our empirical exercise.

3 Empirical Model and Results

In this section we present the specification of our structural VAR and the empirical results.

3.1 Model specification and data

Consider the following specification for a vector of endogenous variables Y_t :

$$Y_t = a + \sum_{i=1}^n A_i Y_{t-i} + B \varepsilon_t \quad (12)$$

where a is an $(n \times 1)$ matrix of constants, A_i is an $(n \times n)$ matrix of autoregressive coefficients and ε_t is a vector of structural disturbances. Identification of (12) requires imposing $n(n-1)/2$ restrictions on B , which we do by using the sign restrictions shown in Table 2. Our sign restriction approach is based on Canova and De Nicoló (2002), Uhlig (2005) and Peersman (2003). Note that the above derived sign restrictions of Table 2 are imposed on the initial 4 periods of the impulse response function. The Appendix explains in detail the implementation of the sign restriction approach.

Our VAR includes six variables: $Y_t = [EQ \ c \ i \ \pi \ TB \ REER]$, and comprises the variables identified in the two-country setting of the DSGE model of section 2, i.e. private consumption (c), short-term interest rates (i), inflation (π), equity returns (EQ), as well as the trade balance (TB) and the real exchange rate ($REER$)⁹. Many extensions to this benchmark specification are possible, such as to include investment and government consumption explicitly in the empirical model. However, our preferred choice is to start with a parsimonious specification that allows us to analyze the effect of news shocks, while also trying to keep a tractable empirical model. We will discuss below several modifications and extensions to this benchmark.

⁹We experimented by including relative GDP into the VAR, as well as using alternative restriction to output and consumption-output ratio for differentiating asset price shocks from government spending shocks, but the results did not change significantly. The results are available upon request.

We base our benchmark estimation on a core set of 16 industrialized countries for which we have data for an extended period reaching back to 1974. We use 1974 as the starting point of the analysis as it is the start of the floating exchange rate period after the collapse of the Bretton Woods system. In a second step, we then extend our sample to an additional 26, mostly emerging market countries. This, however, reduces the sample period to 1990-2007. All of the analysis uses quarterly data. Table 1 lists the countries included.

For our empirical estimation we use relative variables, i.e. we specify each variable in domestic versus rest-of-the-world terms. More precisely, consumption c is the difference in log private consumption in the domestic economy and log private consumption in the rest of the world, both expressed in US dollar (using end-of-period exchange rates). Interest rates i are the percentage difference of domestic short-term (money market) rates from those in the rest of the world, while inflation π is the corresponding percentage difference in CPI inflation. The rest of the world for all three variables comprises the other 15 economies (in the benchmark sample) or other 41 countries (in the extended sample), with each country being weighted by its GDP share in the sample group.

Our preferred measure of asset prices EQ is the difference between domestic equity returns and foreign equity returns, both measured in local currency terms. We use local currencies to express returns, rather than US dollars, because we want to obtain a measure of asset price shocks that excludes exchange rate movements.¹⁰ Moreover, we use shocks to equity prices, rather than changes to market capitalization, as our preferred measures because our primary interest is in the cross-country heterogeneity in the responses of the trade balance and the exchange rate. The rest-of-the-world group comprises the other countries in the sample, with each of these countries being weighted by their equity market capitalization. We use equity market capitalization weights, rather than GDP weights, because equity shocks are likely to affect the trade balance of countries partly through wealth effects, which in turn should be related to the size of financial wealth held by households, which is better proxied by market capitalization than GDP. In the section on the robustness analysis below we will discuss how alternative specifications of asset price shocks influence the empirical findings.

The trade balance TB is measured as a ratio to domestic GDP. We use the trade balance, rather than the current account, as we are interested in the effect of asset price shocks on net exports and want to exclude the effect on income. We use the total trade balance, rather than the trade balance only vis-a-vis the countries in the sample, though the results change little when using the extended country sample including EMEs; a point to which we return in the robustness analysis. As the final variable, the real effective exchange rate $REER$ uses trade weights for a broad set of partner countries, and is expressed in logs. Note that in contrast to the theoretical part, the $REER$ in the data is defined in such a way that an increase is associated with an appreciation of the $REER$.

A final note concerns the treatment of euro area countries after the creation of the euro in 1999. All variables for euro area countries are country-specific, except for short-term interest rates which are common to euro area countries after 1999. This is a caveat, yet should not constitute a serious weakness of our empirical approach since we only impose that interest rates rise in response to a country-specific asset price shock, yet allow for this response be different across euro area countries.

As to the data sources, the trade balance, GDP, consumption, inflation and short-term

¹⁰Hau and Rey (2006) and Andersen et al. (2007), for instance, show that there tends to be a negative correlation between equity returns and exchange rate returns in the data for several industrialized countries.

interest rates come from the IMF's International Financial Statistics (IFS). Equity returns and equity market capitalization are market indices and are sourced from Bloomberg while we took the real effective exchange rates from the IFS and the OECD. Table 2 lists the variables, their definitions and sources.

3.2 Empirical results

Figures 7-12 shows the impulse responses of the six variables to a 10% positive equity market shock based on our Bayesian VAR model, for six representative countries out of the 16 industrialized countries in the benchmark sample (the US, France, Australia, Germany, Finland and Korea). The shaded areas indicate the 16 and 84 percentiles of the posterior distribution, following the convention in the literature. Table 3 summarizes the point estimates of the peak impulse responses for all 42 countries in the sample.

As to the United States (Figure 7), a 10% increase in (relative) US equity prices leads to a substantial worsening in the US trade balance. The effect of the asset price shock increases gradually over time up to 16-20 quarters, when it reduces the US trade balance by more than 1.0 percentage points (p.p.) of US GDP. This effect of asset prices on the trade balance appears to stem from two channels, a first one through wealth effects and a second related to the exchange rate. The importance of wealth effects is evident by the strong and quite persistent increase in private consumption, which in turn leads to a higher demand for imports.

The role of the exchange rate channel is underlined by the significant appreciation of the REER after a positive asset price shock. The real appreciation is likely to be influenced both by the increase in domestic inflation and in domestic interest rates, though both of these responses are more short-lived as inflation and nominal interest rates revert back within 10 quarters. The rise in interest rates and real appreciation of the exchange rate is consistent with the evidence of the presence of a significant forward discount bias found in the literature (e.g. Engel 1996), as well as the more recent evidence stressing the importance of monetary policy or 'Taylor-rule' fundamentals for exchange rate determination (Engel and West 2005, Mark 2005, Clarida and Waldman 2007).¹¹ Taking the model structure seriously, the impulse response of the trade balance in the United States indicates the existence of complementarity between domestic and foreign goods. At the same time, the appreciation of the exchange rate following an asset price shock hints towards the existence of a negative international transmission of relative price developments as discussed by Corsetti, Dedola and Leduc (2008) for unanticipated productivity shocks¹².

Figures 8-12 and Table 3 show the corresponding impulse responses for five of the other countries of the sample, among them one emerging economy (Korea, Figure 12). With a few exceptions, the patterns of the impulse responses are quite similar across countries: the trade balance of most countries deteriorates in response to a positive asset price shock, though the permanence of this response is mostly somewhat lower than that of the United

¹¹Moreover, this positive effect of asset prices on the exchange rate is not necessarily inconsistent with the literature that finds a negative correlation between equity returns and exchange rate movements (Hau and Rey 2006, Andersen et al. 2007) as those correlations are unconditional ones and may stem from other types of shocks.

¹²In the standard open-economy literature, an unanticipated increase in productivity in the domestic tradable sector leads to a deterioration of the terms of trade and a depreciation of the real exchange rate, labelled a the "positive transmission". With low price elasticities, however, productivity increases appreciates the home terms of trade and the real exchange rate, reducing relative wealth and consumption abroad (negative transmission).

States. Moreover, the real exchange rate and private consumption always increases over the medium-run after an increase in equity prices, though again the permanence of this effect differs markedly across countries. The strength of the reaction of private consumption for most countries suggests that wealth effects constitute an important channel through which asset price shocks affect the trade balance of countries. Nominal interest rates and inflation also rise in the short-run, though recall that we imposed this response for the first four quarters in order to identify asset price shocks. However, the magnitude and the persistence of the reaction of interest rates and inflation again differ substantially across countries.

How robust are these findings across alternative specifications, country samples and time periods? We conduct several robustness tests on the benchmark model.¹³ First, we use the current account instead of the trade balance, taking into account the fact that the dynamics of both can be considerably different for some countries. Figure 13 shows the impulse responses of this specification for the United States and confirms the basic thrust of the benchmark results as the current account declines considerably after a positive asset price shock. In fact, the reaction of the current account is somewhat stronger, as one would indeed expect, likely due to the decline not only of the trade balance but also of the income part of the current account.

Second, we use relative equity market capitalization,¹⁴ rather than equity prices, to define asset price shocks. Figure 14 shows that the pattern of the impulse responses is unchanged for the United States (as well as for other industrialized countries, which are not shown for brevity reasons).

As a third robustness check, we shorten the time sample to 1990-2007 in order to allow for the possibility that asset price shocks may have become more important over time as countries have become more integrated financially and through trade. Figure 15 shows that the initial reaction of the trade balance is slightly larger and the response of private consumption significantly larger for the United States, lending some support to this conjecture. We will return to the discussion of various determinants and channels in the next section.

Finally, as a fourth robustness test we extend the sensitivity of the impulse response patterns to the extension of the country sample to include also emerging markets, which also implies a shorter estimation period for 1990-2007. Figure 16 again shows for the United States very similar impulse responses as for the benchmark specification. Moreover, Table 3 lists the impulse responses also for this extended sample¹⁵.

In summary, asset price shocks appear to have a significant effect on the trade balance of countries, partly through wealth effects on domestic consumption and partly through an exchange rate channel that leads a real appreciation of the domestic currency. Moreover, there are substantial cross-country differences in the effect of asset price shocks, with the trade balance of the United States in particular exhibiting one of the largest reactions to asset price shocks.

¹³We show here only the corresponding results for the United States, though the conclusions on the robustness checks are qualitatively similar for other countries.

¹⁴Relative equity market capitalization is measured as the difference in the log domestic market capitalization and the log rest-of-the-world market capitalization, both measured in US dollars. Using market exchange rates or PPP exchange rates does not change the findings in a meaningful way.

¹⁵We have conducted several other robustness checks such as filtering the variables using the HP filter or the method suggested by Cogley et al. (2003), but the results were not affected.

4 Discussion

What explains the cross-country heterogeneity in the effects of exogenous asset price fluctuations? This section attempts to shed some light on this question by focusing on the role of financial openness and depth, trade openness as well as monetary policy and fiscal policy as potential determinants. In this respect, it also offers a discussion on the relative importance of asset market structure for the transmission of news shocks, as discussed in the theoretical exercise.

Moreover, our sample period intentionally ends in 2007 so as to ensure that the empirical findings are not driven by the 2008-09 financial crisis. Yet, the 2008-09 financial crisis may be a useful benchmark to assess how well the empirical findings of the paper for the period 1974-2007 hold up for the crisis period. After all, the 2008-09 crisis was primarily financial in nature. Hence it may be intriguing to investigate how well the actual adjustments in trade balances, (relative) consumption rates and exchange rates globally during the crisis match the predicted adjustments based on our empirically estimated elasticities for the 1990-2007 period.

We stress at the outset that this analysis does not offer an empirical test of these different hypotheses, but its intention is rather to discuss how different factors may influence the transmission of asset price fluctuations to the trade balance, and whether or not these are consistent with the findings of our empirical analysis.¹⁶

A starting point is the large literature on the role of financial openness and depth for consumption risk-sharing in international portfolios. The strand of the literature building on the seminal work by Lewis (1996) has emphasized the potential role of financial openness for consumption smoothing in response to various shocks; while other parts of this literature have focused on the role of various financial frictions (Alfaro et al. 2008, Fratzscher and Imbs 2009) and the role of a financial home bias (e.g. Kho et al. 2006). Applying the reasoning of this literature to our setting, differences in *financial market depth* are one potential explanation that may account for the heterogeneity in the effect of asset price shocks. The channel via wealth effects of an asset price shock should be more important in an economy in which the size of financial wealth is larger, in which financial markets are more liquid and in which fewer households are liquidity constrained. For instance, the comparably strong response of the US trade balance to an asset price shock through such a channel may potentially be accounted for by the fact that the United States has one of the deepest equity markets, not just in global size, but also as a share of domestic GDP.

However, what matters for the role of the wealth channel is not the size of the domestic equity market per se, but how much of it is owned by domestic investors (and how much by foreigners) - we refer to this as ‘financial domestic size’, measured as the ratio of domestic equity market capitalization owned by domestic investors to domestic GDP. Also for this proxy the United States is special, as with 90% this share is the highest among all countries in the sample. Although some small economies such as the Netherlands, Switzerland and Finland have larger equity markets than the US in terms of domestic GDP, much less of the equity wealth of the domestic market is owned by domestic investors in those countries.¹⁷

¹⁶In essence, our analysis here is based on comparing the impulse response functions across the 42 countries in our extended sample. Given that we have only this cross-sectional dimension, it would not be very meaningful to conduct a more formal analysis. As discussed in the previous section, the analysis of this comparison does not depend on the time period covered by our estimation, as the impulse responses are similar across countries when estimating over the whole sample period or over the shortened period since 1990.

¹⁷Several other proxies may of course be relevant. For instance, it would be useful to know cross-country

This last point leads us to a second potential financial determinant of the strength of the wealth channel, which is the degree of *equity home bias*. Even if domestic equity markets are deep and liquid, consumption and thus the trade balance may be insensitive to an asset price shock if households have well diversified portfolios in which they hold a large share of their wealth in foreign assets. The larger the share of financial assets invested abroad - and thus the smaller the equity home bias and the higher risk sharing - the lower one would expect the response of the trade balance to be to a domestic asset price shock. Two, admittedly imperfect proxies of equity home bias that we construct are the ‘financial home weight’ for each country i - measured as the share of domestic investors’ equity invested in domestic equity markets ($1 - w_i$); and the ‘financial home bias’, $HB_i = 1 - w_i/w_i^*$ - with w_i the share of the equity wealth of country i that is invested abroad, and w_i^* as the share of the rest of the world market capitalization in the world - so that $HB_i = 0$ indicates no equity home bias and $HB_i = 1$ a perfect home bias.

Table 4 shows the correlation coefficients, for the extended sample of 42 countries, between the largest/peak impulse responses of the 5 endogenous variables to a positive 10% relative equity price shock and the potential determinants (based on the estimation period 1990-2007). Figure 17 provides the graphical illustration of these correlations for three of the endogenous variables (the trade balance in Panel A, for private consumption in Panel B, and for the REER in Panel C).

The findings of both the table and the figure indeed provide support for the hypotheses that financial depth/size and the degree of home bias play a role for the sensitivity of the trade balance to asset price shocks. For instance, there is a sizeable negative correlation of -0.56 between the size of the domestic equity market held by domestic investors (relative to domestic GDP, "financial domestic size") and the size of the trade balance response to equity shocks, suggesting that the trade balance is more sensitive to asset price shocks in economies in which domestic residents hold a lot of equity wealth (either as a share of the market or as a share of GDP). Similarly, the negative correlation between the size ("financial depth") and the trade balance response is confirmed in the data.

Table 4 also underscores that both wealth effects and exchange rates are two key channels through which asset price shocks affect net exports of countries. The correlations between financial depth/domestic size and the private consumption response as well as the REER response to an asset price shock are substantial at around 0.42-0.58.

A third potential determinant is trade: *ceteris paribus*, an asset price shock should have a larger effect on net exports through the wealth channel in more open economies. However, Table 4 suggests that this may not be an important channel in practice as there is not a negative, but in fact a small positive correlation between the response of the trade balance to equity shocks and trade openness (measured as the sum exports and imports over GDP). A telling example is again the US, which is relatively closed in terms of trade but whose trade balance is highly sensitive to asset price shocks.

A fourth factor may be the size of the government in the economy. The larger the size of the government in an economy, the lower may be the response of private consumption and thus the trade balance to an asset price shock.¹⁸ There is no strong evidence for such a channel as the correlation between the response of net exports to asset price shocks and the size of the government (measured as the ratio of government consumption to GDP) is

differences in equity market participation in order to understand how many households hold equity wealth. Such data is, to the best of our knowledge, not available for a cross-section of countries.

¹⁸In a related vein, Corsetti and Mueller (2006, 2008) show for a set of OECD countries that the effect of fiscal policy shocks on net exports is smaller in a more closed economy due to terms of trade changes.

basically zero, as is the correlation with private consumption.

A fifth candidate is monetary policy. An aggressive tightening of monetary policy in response to a positive asset price shock should dampen the effect of this shock on consumption and thus on net exports through the wealth channel, although, on the other hand, such a tightening may lead to an appreciation of the exchange rate and a worsening of the trade balance. Based on the impulse responses, however, Table 4 indicates that there seems to be no significant correlation between the response of interest rates and private consumption, or interest rates and the trade balance across countries. This of course is no more than suggestive, and does not necessarily imply that monetary policy is not relevant for influencing the impact of asset prices on the trade balance, as in fact there is a strong positive correlation between the inflation response and the interest rates response to asset price shocks across countries, as shown in Table 4.

Finally, we investigate how well our empirical model for the period till 2007 is capable of explaining adjustments globally in trade balances, (relative) private consumption and effective exchange rates during the 2008-09 crisis. The idea is as follows: as the 2008-09 crisis was primarily financial in nature, and if the differences in severity with which the crisis affected different countries is captured well by (relative) equity market movements during that period, then it may be intriguing to test whether our model is able to also capture the cross-country differences in the adjustment of trade balances, consumption and exchange rates during the crisis period.

For this purpose, we take the elasticities of trade balances, (relative) private consumption and the real effective exchange rate (REER) to relative equity market shocks for the pre-2007 period, as shown in Table 3 and discussed above. We then derive predicted adjustments in trade balances, consumption and REER, by multiplying these elasticities with the actual equity market performance (relative to the rest of the world) during 2008-09. Of course, it cannot be emphasized enough that these are merely back-of-the-envelope calculations that ignore many features that were crucial during the crisis - such as the role of changes in liquidity, risk appetite and housing price changes, as well as cross-country differences in domestic banking systems and the responses of governments in the form of fiscal policy and monetary policy. All of these factors are likely to have influenced consumption and investor behavior, and thus the trade balance and the exchange rate of each country.

Figure 18 shows the scatter plots between the actual and predicted changes for the 42 countries of our sample in the trade balance (Panel A), relative private consumption (panel B), and the real effective exchange rate (Panel C). Panel A shows that there is a remarkably strong positive correlation between the actual and predicted changes in the trade balances across the 42 countries. This means that countries that had relatively larger declines in equity markets during the crisis and/or relatively large elasticities of the trade balance to equity market shocks indeed experienced (larger) improvements in the trade balance during the crisis. By contrast, countries with relatively smaller declines/better equity market performance during the crisis and/or with smaller elasticities experienced declines in their trade balances. Figure 18 also shows that there is some positive, though weaker correlation between actual and predicted REER adjustments during the crisis, while there is no apparent link between actual and predicted changes in private consumption.

Therefore, to the extent that such differences are reflected in or correlated with the relative equity market performance during the crisis, the evidence presented here suggests that our model indeed captures reasonably well in particular the adjustments in trade balances, and to some extent in real effective exchange rates during the crisis.

In summary, the section has shown evidence that the responses of trade balances, con-

sumption and exchange rates to asset price shocks are related to the financial development and financial depth of countries. Moreover, the massive adjustment globally of trade balances and of exchange rates during the 2008-09 financial crisis is consistent with the empirical estimates of our model, which imply that countries with a relatively worse equity market performance and/or higher elasticities to equity market shocks should experience an improvement in their trade balance and a depreciation of their real effective exchange rate during the crisis. We emphasize that these findings are merely suggestive, given the many caveats that apply and given the limitations of having only 42 cross-section observations for this analysis.

5 Conclusions

The paper has analyzed the effect of asset price fluctuations on the current account. Its focus has been on the experience of a broad set of 42 industrialized and emerging market economies, employing a Bayesian VAR with sign restrictions. We have used a simple theoretical two-country DSGE model in order to derive the identifying restrictions exogenous asset price fluctuations, and to ensure that we can distinguish this type of shock from other shocks, such as to productivity, monetary policy and government spending. Importantly, we model asset price shocks as news shocks, along the line of work by Beaudry and Portier (2006, 2007), which argue that exogenous asset price fluctuations reflect changes to expectations about future fundamentals, and introduce such news shocks in a open economy DSGE model following Schmitt-Grohe and Uribe (2008) and Fukiwara et al. (2008).

The empirical evidence suggests that asset price shocks indeed exert a significant effect on the trade balance of countries, partly through a wealth channel of private consumption and partly via an exchange rate channel. An intriguing finding of the paper is the substantial cross-country heterogeneity that we detect in the sensitivity of the trade balance to asset price shocks. In particular the US trade balance seems to be among the most sensitive to relative asset price shocks, falling more than 1.0 percentage points in response to a 10% increase in US equity prices relative to the rest of the world. By contrast, other countries' trade balances mostly appear to be less responsive to asset price shocks.

What explains this cross-country heterogeneity? While the paper does not offer a systematic empirical analysis, the stylized facts suggest that financial depth and the degree of equity home bias are related to the sensitivity of the current account to asset prices. For instance, a given asset price shock tends to have a larger effect on the trade balance in countries with deep financial markets and in which domestic investors have a large home bias, i.e. hold a large share of their financial assets domestically. By contrast, trade openness does not appear to be related in the expected way to the impact of asset price on net exports, and the picture is also much less clear-cut for the role of monetary policy and the size of government consumption.

Moreover, the massive adjustment globally of current account positions and exchange rates that countries experienced during the 2008-09 crisis is consistent with the empirical estimates of our model, which imply that countries with a relatively worse equity market performance and/or higher elasticities to equity market shocks should experience an improvement in their trade balance and a depreciation of their real effective exchange rate during the crisis.

Many open questions remain and there are various future avenues for better understanding the importance of asset price shocks, both domestically and globally. In particular

against the background of the financial crisis of 2008-09, the role of monetary policy for asset prices remains unclear. Similarly, the focus of the present paper has been only on equity markets. Extending the analysis to housing markets seems particularly relevant in the current financial market context. Another important avenue is to deepen further the analysis of emerging markets, which are rapidly becoming ever more important players in the global economy and international financial markets. We leave these avenues for future research.

Appendix I: Implementation of the sign restrictions

In this appendix, we explain how we implement the sign restrictions in our VAR. For a detailed explanation, we refer to Peersman (2003). Consider equation (12) in section (3). Since the shocks are mutually orthogonal, $E(\varepsilon_t \varepsilon_t') = I$, the variance-covariance matrix of equation (12) is equal to: $\Omega = BB'$. For any possible orthogonal decomposition B , we can find an infinite number of admissible decompositions of Ω , $\Omega = BQQ'B'$, where Q is any orthonormal matrix, i.e. $QQ' = I$. Possible candidates for B are the Choleski factor of Ω or the eigenvalue-eigenvector decomposition, $\Omega = PDP' = BB'$, where P is a matrix of eigenvectors, D is a diagonal matrix with eigenvalues on the main diagonal and $B = PD^{\frac{1}{2}}$. Following Canova and De Nicoló (2002) and Peersman (2003), we start from the latter in our analysis. More specifically, $P = \prod_{m,n} Q_{m,n}(\theta)$ with $Q_{m,n}(\theta)$ being rotation matrices of the form:

$$Q_{m,n}(\theta) = \begin{bmatrix} 1 & \cdots & 0 & \cdots & 0 & \cdots & 0 \\ \cdots & \ddots & \cdots & \cdots & \cdots & \cdots & \cdots \\ 0 & \cdots & \cos(\theta) & \cdots & -\sin(\theta) & \cdots & 0 \\ \vdots & \vdots & \vdots & 1 & \vdots & \vdots & \vdots \\ 0 & \cdots & \sin(\theta) & \cdots & \cos(\theta) & \cdots & 0 \\ \cdots & \cdots & \cdots & \cdots & \cdots & \ddots & \cdots \\ 0 & \cdots & 0 & \cdots & 0 & \cdots & 1 \end{bmatrix} \quad (13)$$

Since we have six variables in our model, there are $n(n-1)/2 = 15$ bivariate rotations of different elements of the VAR: $\theta = \theta_1, \dots, \theta_{15}$, and rows m and n are rotated by the angle θ_i in equation (13). All possible rotations can be produced by varying the 15 parameters θ_i in the range $[0, \pi]$. For the contemporaneous impact matrix determined by each point in the grid, B_j , we generate the corresponding impulse responses:

$$R_{j,t+k} = A(L)^{-1} B_j \varepsilon_t \quad (14)$$

A sign restriction on the impulse response of variable p at lag k to a shock in q at time t is of the form:

$$R_{j,t+k}^{pq} \geq 0 \quad (15)$$

We impose the sign restrictions for $k = 4$ lags; choosing a different length, however, does not alter the findings in a meaningful way. Following Uhlig (2005) and Peersman (2003), we use a Bayesian approach for estimation and inference. Our prior and posterior belong to the Normal-Wishart family for drawing error bands. Because there are an infinite number of admissible decompositions for each draw from the posterior when using sign restrictions, we use the following procedure. To draw the "candidate truths" from the posterior, we take a joint draw from the posterior for the usual unrestricted Normal-Wishart posterior for the VAR parameters as well as a uniform distribution for the rotation matrices, using 1000 draws. We then construct impulse response functions. If all the imposed conditions of the impulse responses of the four different shocks are satisfied, we keep the draw. Decompositions that match only the criteria of three or less shocks are rejected. This means that these draws receive zero prior weight. Based on the draws kept, we calculate statistics and report the median responses, together with 84th and 16th percentile error bands.

References

- [1] Alfaro, L., Kalemli-Ozcan, S., Volosovych, V., 2008. Why doesn't capital flow from rich to poor countries? An empirical investigation. *Review of Economics and Statistics* 90, 347-368.
- [2] Andersen, T., Bollerslev, T., Diebold, F. and C. Vega, 2007. Real-Time Price Discovery in Stock, Bond and Foreign Exchange Markets, *Journal of International Economics* 73, 251-277.
- [3] Bernanke, B., 2005. The Global Saving Glut and the U.S. Current Account Deficit. Sandridge Lecture, Virginia Association of Economics, 10 March 2005.
- [4] Bertaut, C., 2002. Equity Prices, Household Wealth, and Consumption Growth in Foreign Industrial Countries: Wealth Effects in the 1990s, Federal Reserve Board International Finance Discussion Paper No. 724.
- [5] Beaudry, P. and F. Portier, 2006. News, Stock Prices and Economic Fluctuations, *American Economic Review* 96(4), September, 2006.
- [6] Beaudry, P. and F. Portier, 2007. When can Changes in Expectations cause Business Cycle Fluctuations, *Journal of Economic Theory* 135(1), 2007.
- [7] Blanchard, O., 1985. Debt, Deficits, and Finite Horizons, *Journal of Political Economy*, 93.
- [8] Blanchard, O., F. Giavazzi and F. Sa, 2005. The U.S. Current Account and the Dollar, *Brookings Papers on Economic Activity* 1, 1-65.
- [9] Blanchard, O., and R. Perotti, 2002, An Empirical Characterization of the Dynamic Effects of Changes in Government Spending and Taxes on Output, *Quarterly Journal of Economics*, Vol. 117, No.4, pp. 1329-68.
- [10] Bussiere, M., M. Fratzscher and G. Müller, 2005. Productivity Shocks, Budget Deficits and the Current Account. ECB Working Paper No. 509, August 2005.
- [11] Caballero, R., E. Farhi and P.-O. Gourinchas, 2006. An Equilibrium Model of 'Global Imbalances' and Low Interest Rates. MIT and University of California, Berkeley, mimeo.
- [12] Canova, F. and G. de Niccolo, 2002. Monetary Disturbances Matter for Business Cycle Fluctuations in G-7, *Journal of Monetary Economics*, 49(6), 1131-1159.
- [13] Case, K.E., J.M. Quigley and R.J. Shiller, 2005. Comparing Wealth Effects: The Stock Market versus the Housing Market, *B.E. Advances in Macroeconomics* 5(1), Article 1.
- [14] Chinn, M. and J. Frankel, 2008. The Euro May over the Next 15 Years Surpass the Dollar as Leading International Currency, forthcoming *International Finance*.
- [15] Chinn, M. and H. Ito, 2007. Current Account Balances, Financial Development and Institutions: Assaying the World 'Saving Glut', *Journal of International Money and Finance*.

- [16] Clarida, Richard and Daniel Waldman, 2007. Is Bad News About Inflation Good News for the Exchange Rate? NBER Working Paper No. 13010.
- [17] Corsetti, G., L. Dedola and S. Leduc, 2006. Productivity, External Balance and Exchange Rates: Evidence on the Transmission Mechanism Among G7 Countries, NBER Working Paper 12483.
- [18] Giancarlo C., L. Dedola, and Sylvain Leduc, 2008. "International Risk Sharing and the Transmission of Productivity Shocks," *Review of Economic Studies*, Blackwell Publishing, vol. 75(2), pages 443-473, 04.
- [19] Corsetti, G. and G. Müller 2006. Twin Deficits: Squaring Theory, Evidence and Common Sense, *Economic Policy* 48, 597-638.
- [20] Corsetti, G. and G. Müller 2008. Twin Deficits, Openness and the Business Cycle, *Journal of European Economic Association Papers and Proceedings*.
- [21] Christiano, Lawrence, Cosmin Ilut, Roberto Motto, and Massimo Rostagno, 2007, "Monetary Policy and a Stock Market Boom-Bust Cycle," mimeo, Northwestern University.
- [22] Cogley, Timothy, Sergei Morozov, and Thomas J. Sargent, 2003, "Bayesian Fan Charts for U.K. Inflation: Forecasting and Sources of Uncertainty in an Evolving Monetary System," *Journal of Economic Dynamics and Control*, 29(11), 1893-1925.
- [23] Dedola, L. and S. Neri, 2007. What does a technology shock do? A VAR analysis with model-based sign restrictions, *Journal of Monetary Economics* 54(2), 512-549.
- [24] Dedola, L. and R. Straub, 2009. Optimized Reserve Holdings and Country Portfolios, mimeo.
- [25] Edelberg, W., M. Eichenbaum, and J. Fisher, 1999, Understanding the Effects of Shocks to Government Purchases, *Review of Economic Dynamics*, Vol. 2, pp.166-206.
- [26] Engel, C., 1996. The Forward Discount Anomaly and the Risk Premium: A Survey of Recent Evidence. *Journal of Empirical Finance* 3, 123-192.
- [27] Engel, C. and J. Rogers, 2006. The U.S. Current Account Deficit and the Expected Share of World Output, *Journal of Monetary Economics* 53(5), 1063-1093.
- [28] Engel, C. and K. West, 2005. Taylor Rules and the Deutschmark-Dollar Real Exchange Rate, *Journal of Money, Credit and Banking* 38(5), 1175-94.
- [29] Erceg C., L. Guerrieri and C. Gust, 2005. Expansionary Fiscal Shocks and the US Trade Deficit. *International Finance* 8, 363-397.
- [30] Fatás, A., and I. Mihov, 2001, The Effects of Fiscal Policy on Consumption and Employment: Theory and Evidence, unpublished, INSEAD, Fontainebleau.
- [31] Fogli, A. and F. Perri, 2006. The Great Moderation and the US External Imbalance, NBER Working Paper No. 12708.
- [32] Forbes, K. and M. Chinn, 2004. A Decomposition of Global Linkages in Financial Markets Over Time, *Review of Economics and Statistics* 86(3), 705-722.

- [33] Fratzscher, M., 2008. US shocks and global exchange rate configurations, *Economic Policy*, April 2008, 363–409.
- [34] Fratzscher, M., and J. Imbs, 2009. Risk sharing, finance and institutions in international portfolios, *Journal of Financial Economics* 94: 428–447, December 2009.
- [35] Fratzscher, M., L. Juvenal and L. Sarno, 2007. Asset prices, exchange rates and the current account, ECB Working Paper No. 790, forthcoming *European Economic Review*.
- [36] Fratzscher, M. and R. Straub, 2009. Asset prices and current account fluctuations in G7 countries, *IMF Staff Papers* 56(3), 633-54.
- [37] Fujiwara, I., Y. Hisero, and M. Shintani, 2008, Can News Be a Major Source of Aggregate Fluctuations? A Bayesian DSGE Approach, Bank of Japan.
- [38] Galí, J. and J. López-Salido, and J. Vallés, 2007, Understanding the Effects of Government Spending on Consumption, *Journal of the European Economic Association*, March 2007, vol. 5 (1), 227-270
- [39] Gourinchas, P.-O. and H. Rey, 2007. International Financial Adjustment, *Journal of Political Economy*, 115 (4): 665—703.
- [40] Greenwood, Jeremy, Zvi Hercowitz and Gregory Huffman. 1988. “Investment, Capacity Utilization and the Real Business Cycle,” *American Economic Review* 78(3): 402-417.
- [41] Gruber, J. and S. Kamin, 2007. Explaining the Global Pattern of Current Account Imbalances, *Journal of International Money and Finance*.
- [42] Hau, H. and H. Rey, 2006. Exchange Rates, Equity Prices and Capital Flows,” *Review of Financial Studies* 19 (1), 273-317.
- [43] Jaimovich, N and S.Rebelo, 2008, News and Business Cycles in Open Economies, *Journal of Money, Credit and Banking*, 2008.
- [44] Jaimovich, N and S.Rebelo, 2009, Can News about the Future Drive the Business Cycle? *American Economic Review*, 2009.
- [45] Ju, J. and S.-J. Wei, 2006. A Solution to Two Paradoxes of International Capital Flows, mimeo, June 2006.
- [46] Kho, B.-C., Stulz, R., Warnock, F., 2006. Financial globalization, governance, and the evolution of the home bias. NBER Working Paper No. 12389.
- [47] King, Robert G., Charles Plosser, and Sergio Rebelo. 1988. “Production, Growth and Business Cycles: I. the Basic Neoclassical Model,” *Journal of Monetary Economics*,
- [48] 21(2-3): 195-232.
- [49] Kraay, A. and J. Ventura, 2005. The Dot-Com Bubble the Bush Deficits, and the U.S. Current Account. NBER Working Paper No. 11543.
- [50] Krugman, P., 2007. Will There Be a Dollar Crisis? *Economic Policy*, Vol. 22(51), 435-67.

- [51] Lane, P. and G.M. Milesi-Ferretti, 2005, A Global Perspective on External Positions. In *G7 Current Account Imbalances: Sustainability and Adjustment*, edited by Clarida, R.H. Chicago: Chicago University Press.
- [52] Lee, J. and M. Chinn, 2006. Current Account and Real Exchange Rate Dynamics in the G7 Countries, *Journal of International Money and Finance* 25, 257-274.
- [53] Leeper E.M., T.B. Walker and C.S. Yang (2008) : Fiscal Foresight: Analytics and Econometrics, NBER Working Paper 14028.
- [54] Lettau and Ludvigson, 2004. Understanding Trend and Cycle in Asset Values: Reevaluating the Wealth Effect on Consumption, *American Economic Review* 94, 276 – 299.
- [55] Lewis, K., 1996. What can explain the apparent lack of international consumption risk-sharing? *Journal of Political Economy* 104, 267-297.
- [56] Mark, N., 2005. Changing Monetary Policy Rules, Learning and Real Exchange Rate Dynamics, NBER Working Paper No. 11061.
- [57] Mendoza, Quadrini, and Rios-Rull, 2007. Financial Integration, “Financial Deepness and Global Imbalances, NBER Working Paper 12909.
- [58] Nistico, Salvatore, 2006. Monetary Policy and Stock-Price Dynamics in a DSGE Framework, LLEE Working Document n.28, April 2005.
- [59] Obstfeld, M. and K. Rogoff, 2005. Global Current Account Imbalances and Exchange Rate Adjustments, *Brookings Papers on Economic Activity* 1, 67-146.
- [60] Palumbo, Rudd, and Whelan, 2006. On the Relationships between Real Consumption, Income, and Wealth, *Journal of Business and Economic Statistics* 24, 1 – 11
- [61] Peersman, G., 2003. What Caused the Early Millennium Slowdown? Evidence Based on Vector Autoregressions, CEPR Discussion Paper, 4087.
- [62] Peersman, G., and R. Straub, 2009. Technology Shocks and Robust Sign Restrictions in a Euro Area SVAR, *International Economic Review*, Vol 50(3), p 727-750.
- [63] Peersman and Straub, 2008, Putting the New Keynesian Model to a Test, ECB Working Paper Series.
- [64] Perotti, R., 2002, Estimating the Effects of Fiscal Policy in OECD Countries, ECB Working Paper Series, No.168, Frankfurt.
- [65] Sims, C., J.H. Stock and M. Watson, 1990, “Inference in Linear Time Series Models with Some Unit Roots”, *Econometrica* 58
- [66] Smets, F. and R. Wouters, 2003. An Estimated Dynamic Stochastic General Equilibrium Model of the Euro Area, *Journal of the European Economic Association*, 1(5), 1123-1175.
- [67] Schmitt-Grohe S. and M. Uribe, 2008. What’s News in Business Cycles?, NBER Working Paper 14215.

- [68] Stock, James H. and Watson, Mark W. 2003. "Has the Business Cycle Changed? Evidence and Explanations,"FRB Kansas City Symposium, Jackson Hole, Wyoming, 28-30.
- [69] Uhlig, H., 2005. What are the Effects of Monetary Policy on Output? Results from an Agnostic Identification Procedure. *Journal of Monetary Economics* 52, 381-419.
- [70] Ventura, J., 2001. A Portfolio View of the US Current Account Deficit, *Brookings Papers on Economic Activity* 1, 241-253.
- [71] Warnock, F. 2006. How Might a Disorderly Resolution of Global Imbalances Affect Global Wealth? IMF Working Paper 06/170.
- [72] Yaari, M.E., 1965. Uncertain Lifetime, Life Insurance, and the Theory of Consumers, *Review of Economic Studies*, 32.

Table 1: Country sample

Benchmark sample	Extended sample with EMEs	
Australia	Countries of benchmark	
Belgium	Argentina	Mexico
Canada	Austria	New Zealand
Denmark	Brazil	Peru
Finland	Chile	Philippines
France	China	Poland
Germany	Colombia	Portugal
Italy	Czech Republic	Romania
Japan	Greece	Russia
Netherlands	Hungary	South Africa
Norway	India	Slovakia
Spain	Indonesia	South Korea
Sweden	Ireland	Thailand
Switzerland	Malaysia	Turkey
UK		
USA		

Table 2: Data definitions and sources

Variable	Definition	Source
asset prices	difference between domestic equity returns and foreign equity returns, both measured in local currency terms	Bloomberg, mkt indices
trade balance	trade balance as a ratio to domestic GDP	IFS
current account	current account as a ratio to domestic GDP	IFS
REER	log real effective exchange rate using trade weights for a broad set of partner countries	IFS, OECD
consumption	difference in log private consumption in the domestic economy and log private consumption in the rest of the world, both expressed in US dollar (using end-of-period exchange rates)	IFS
inflation	percentage difference of domestic CPI inflation from that in the rest of the world	IFS
interest rate	percentage difference of domestic short-term (money market) rates from those in the rest of the world	IFS, OECD
Financial depth	ratio of market capit. to GDP	Bloomberg, CPIS
Financial size	ratio of dom. market capit. to world market capit. $(1-w^*)$	Bloomberg, CPIS
Fin. dom. share	share of market capit. owned by dom. residents	Bloomberg, CPIS
Fin. dom. size	ratio of market capit. owned by dom. residents to GDP	Bloomberg, CPIS
Fin. home weight	domestic investors' share of equity invested in dom. equity market $(1-w)$	Bloomberg, CPIS
Fin. home bias	equity home bias: $HB = 1 - (w/w^*)$	Bloomberg, CPIS
Trade openness	ratio of exports plus imports to GDP	IFS
Size of governm.	ratio of government consumption to GDP	IFS, OECD
Real GDP growth	average growth rate p.a.	IFS
Productiv. growth	average growth rate p.a.	OECD
PPP weight	GDP weight in the world in PPP terms	OECD, WEO
PPP weight change	% change between 1990 and 2007	OECD, WEO

Table 3: Impulse responses to a 10% relative asset price shock

	IR inflation	IR consumption	IR interest rates	IR trade balance	IR REER
Benchmark sample					
Australia	1.7	8.6	1.9	-0.6	8.2
Belgium	0.7	7.5	1.7	-0.7	2.2
Canada	1.2	9.7	2.2	-0.6	7.0
Denmark	2.4	8.1	2.6	-1.3	3.3
Finland	0.5	3.6	0.7	-0.6	2.3
France	0.8	4.8	1.4	-0.7	1.3
Germany	0.7	9.4	0.9	-1.0	3.1
Italy	1.7	5.5	1.6	-0.7	3.6
Japan	1.7	13.3	2.3	-0.3	12.1
Netherlands	2.4	12.3	6.2	-0.9	2.4
Norway	0.9	2.1	1.6	-0.7	1.4
Spain	0.4	4.8	1.3	-0.4	2.1
Sweden	1.0	6.6	2.1	0.1	6.1
Switzerland	1.7	7.8	2.6	-0.2	5.3
UK	2.7	9.0	4.9	-0.2	7.8
USA	1.0	7.5	2.0	-1.0	5.3
Extended sample with EMEs					
Argentina	2.8	2.2	4.3	0.0	4.4
Austria	2.3	2.2	4.1	0.0	4.4
Brazil	10.3	12.7	13.2	-1.6	12.2
Chile	6.7	10.0	12.4	-0.3	8.2
China	1.3	4.7	2.9	-0.4	1.4
Colombia	2.7	5.2	4.5	0.0	-0.3
Czech Republic	0.8	9.9	3.0	-1.3	8.6
Greece	2.2	4.5	7.9	-0.8	3.6
Hungary	2.1	2.7	2.6	-0.1	-1.0
India	1.3	9.7	2.9	-0.4	8.4
Indonesia	4.1	3.7	6.9	-0.3	4.1
Ireland	2.2	5.5	7.9	-0.8	3.6
Korea	1.8	11.1	5.0	-1.6	12.3
Malaysia	1.7	9.8	4.5	-0.8	12.5
Mexico	8.9	2.6	6.5	-0.3	2.8
New Zealand	3.4	3.1	9.7	-0.2	8.5
Peru	4.0	4.8	4.0	-0.2	3.8
Philippines	4.0	8.8	3.0	-1.4	9.8
Poland	8.2	3.7	13.4	-0.4	2.0
Portugal	2.2	5.5	6.5	-0.8	3.6
Romania	8.2	3.7	7.9	-0.4	2.0
Russia	8.2	5.7	13.4	-0.4	9.0
South Africa	1.2	2.7	3.1	-0.4	1.9
Slovakia	2.1	2.7	2.6	-0.1	-0.3
Thailand	1.3	9.7	2.9	-0.4	8.4
Turkey	2.1	8.7	2.6	-0.1	7.3

Notes: The table shows the peak impulse responses (IR), i.e. maximum responses of the various variables, in %, to a positive 10% shock to *relative* equity prices, i.e. of domestic asset prices relative to those in the rest of the world. Impulse responses for the benchmark sample are based on the estimation for the period 1974-2007, for the extended sample for the period 1990-2007.

Table 4: Correlation pattern between impulse responses and potential determinants

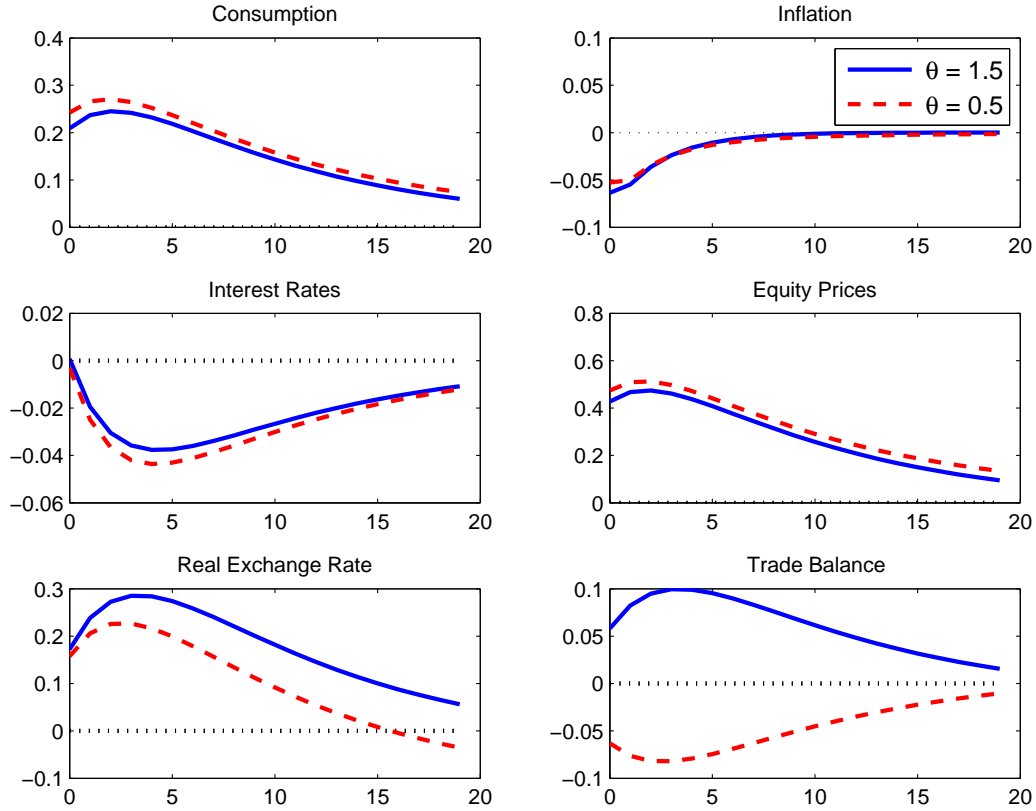
	IR trade balance	IR consump- tion	IR REER	IR inflation	IR interest rates	Trade openness	Governme nt size	Financial depth	Fin. dom. size	Fin. home weight
IR trade balance	1									
IR consumption	-0.5144*	1								
IR REER	-0.4883*	0.7017*	1							
IR inflation	0.0454	-0.0503	0.1517	1						
IR interest rates	0.0268	-0.0008	0.2297*	0.8293*	1					
Trade openness	0.0141	-0.0249	-0.2528*	-0.2192	-0.1352	1				
Government size	-0.0385	0.0763	-0.1994	-0.2204	-0.1732	0.1154	1			
Financial depth	-0.3870*	0.5843*	0.5752*	0.0437	0.1152	-0.0287	-0.2852*	1		
Fin. dom. size	-0.5676*	0.4712*	0.4266*	0.0394	-0.0161	-0.0989	-0.1736	0.7105*	1	
Fin. home weight	-0.1194	0.0788	0.3528*	0.4089*	0.3120*	-0.3599*	-0.5547*	0.1575	0.157	1
Fin. home bias	-0.0959	0.0647	0.3497*	0.4244*	0.3295*	-0.3379*	-0.5535*	0.1531	0.1402	0.9956*

Notes: The table shows the correlation coefficients, for the extended sample of 42 countries, between the peak impulse responses of the 5 endogenous variables to a positive 10% relative equity price shock and the potential determinants. All correlations are based on the estimation period 1990-2007.

'*Financial depth*' is defined as the ratio of equity market capitalisation to GDP; '*financial domestic size*' as the ratio of domestic equity market capitalisation owned by domestic investors to domestic GDP; '*financial home weight*' as the share of domestic investors' equity invested in domestic equity markets ($100-w_i$); '*financial home bias*' as $HB_{i,t} = 1 - w_i/w_i^*$, with $HB_i=0$ indicating no equity home bias and $HB_i=1$ a perfect home bias; '*trade openness*' as the ratio of exports plus import to GDP; '*size of government*' as the ratio of government consumption to GDP. All numbers are in percent and are averages over the period 2000-2007.

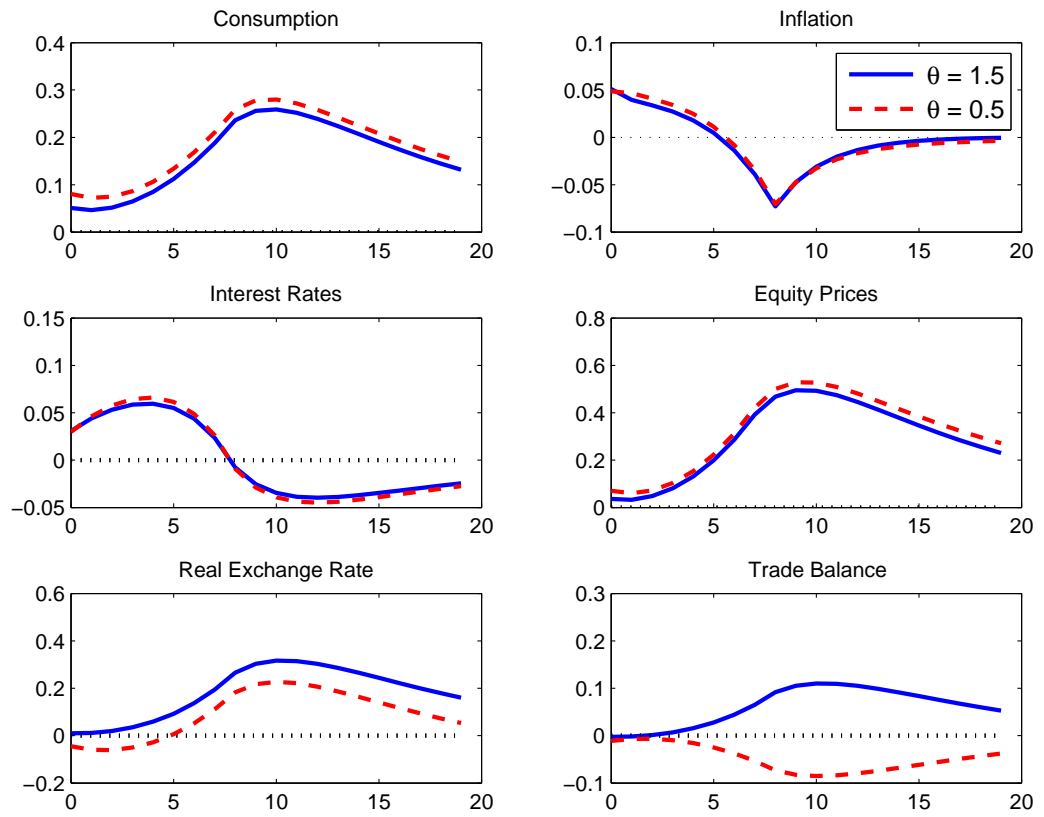
*** indicates statistical significance at the 10% level for pairwise correlation coefficients.

Figure 1: Productivity Shocks in a Two-Country DSGE Model



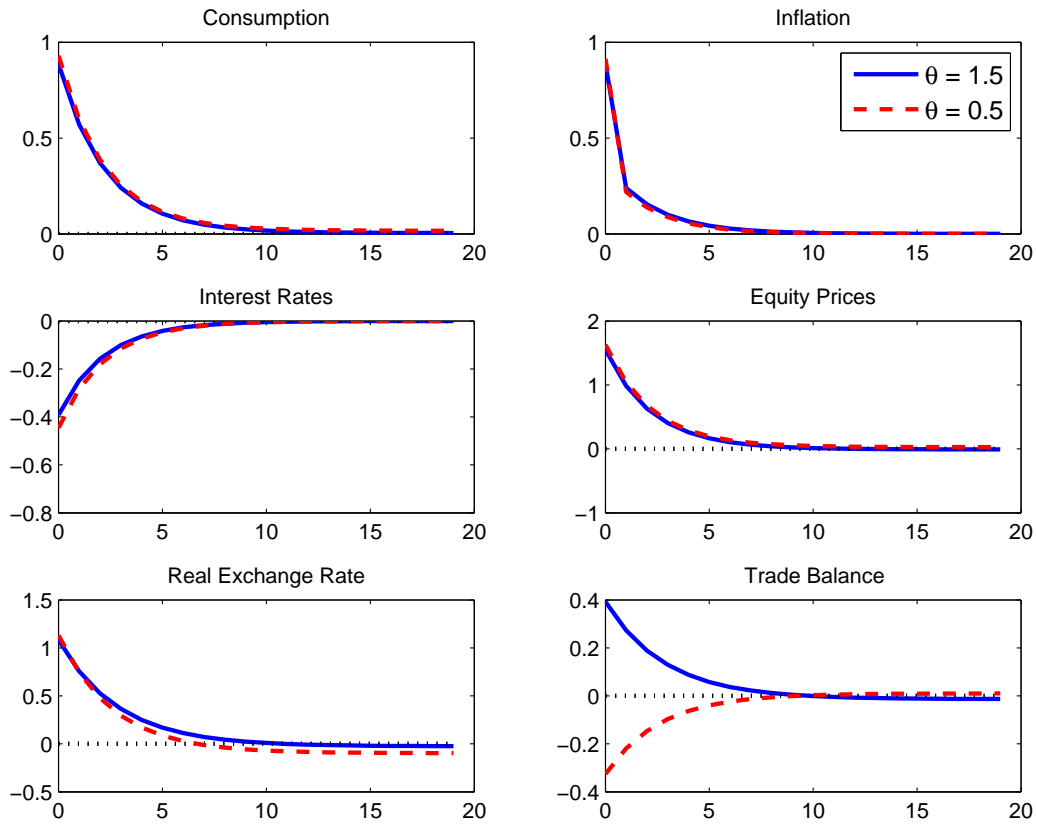
Notes: Figure shows the impulse response function of domestic variables following a productivity shock in the domestic economy.

Figure 2: News Shocks in a Two-Country DSGE Model



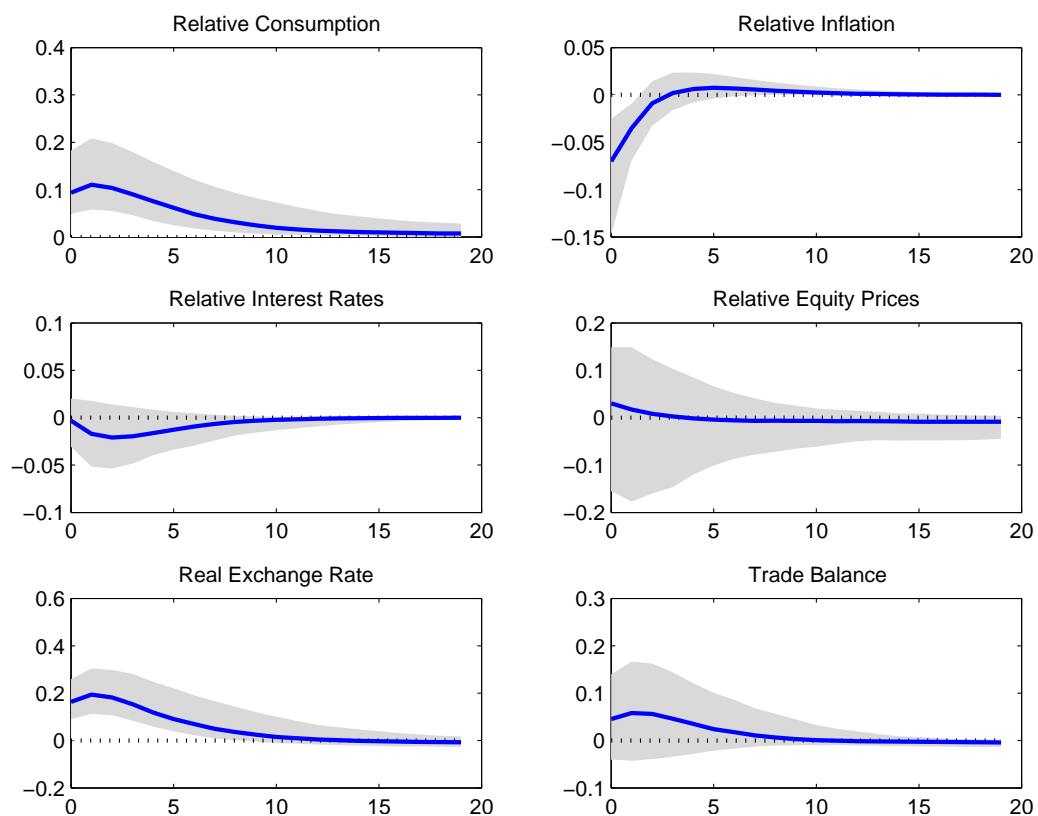
Notes: Figure shows the impulse response function of domestic variables following a news shock in the domestic economy.

Figure 3: Monetary Policy Shocks in a Two-Country DSGE Model



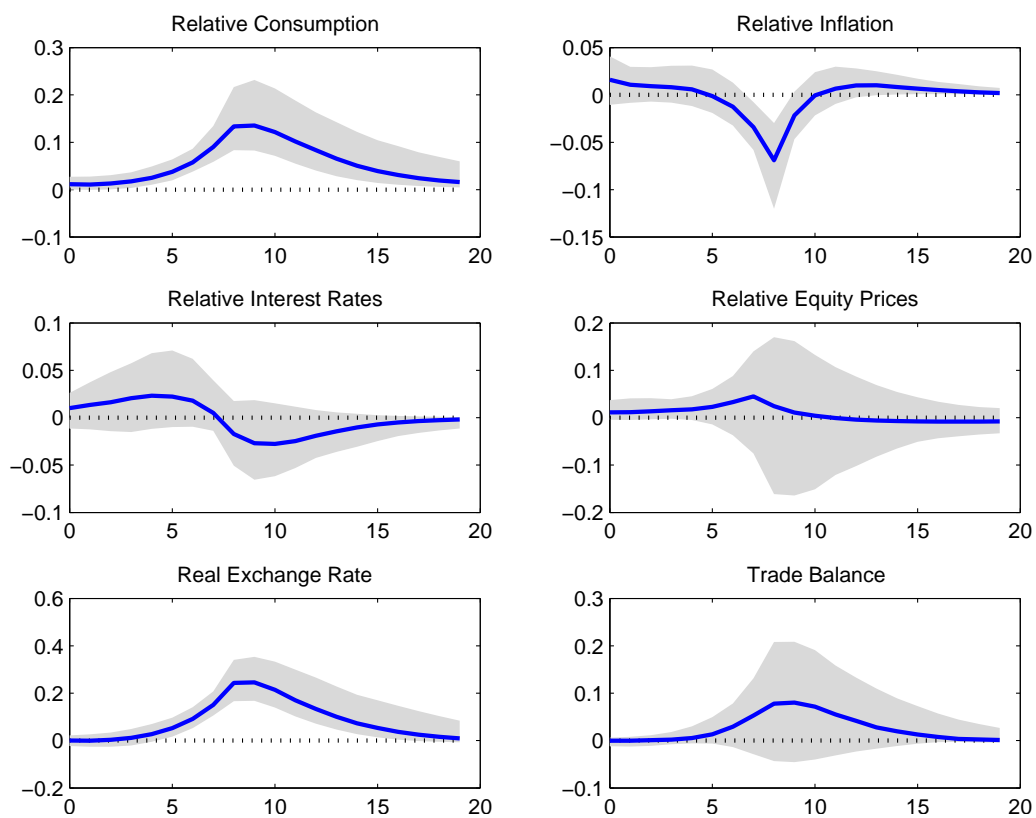
Notes: Figure shows the impulse response functions of domestic variables following a monetary policy in the domestic economy.

Figure 4: Distribution of Impulse Response Functions of Relative Variables following a Productivity Shock



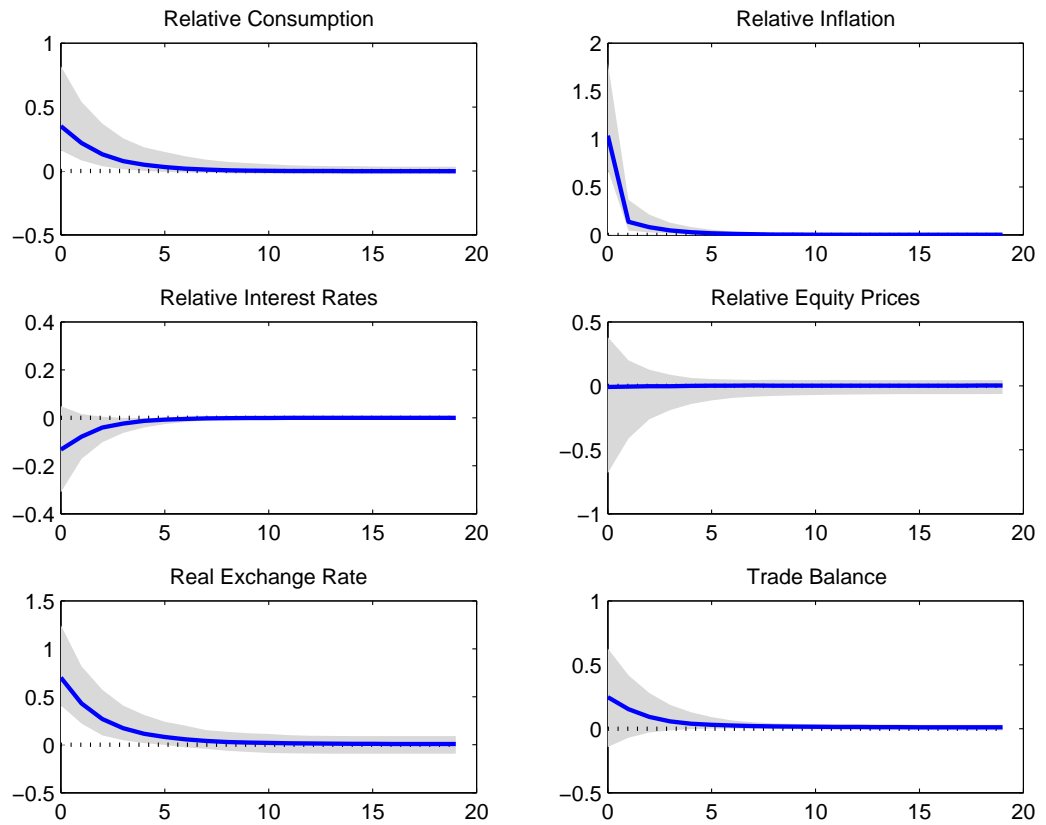
Notes: Figure shows the relative (domestic vs. foreign) impulse response functions following a productivity shock in the domestic economy using the parameter range presented in Table 1.

Figure 5: Distribution of Impulse Response Functions of Relative Variables following a News Shock



Notes: Figure shows the relative (domestic vs. foreign) impulse response functions following a news shock in the domestic economy using the parameter range presented in Table 1.

Figure 6: Distribution of Impulse Response Functions of Relative Variables following a Monetary Policy Shock



Notes: Figure shows the relative (domestic vs. foreign) impulse response functions following a monetary policy shock in the domestic economy using the parameter range presented in Table 1.

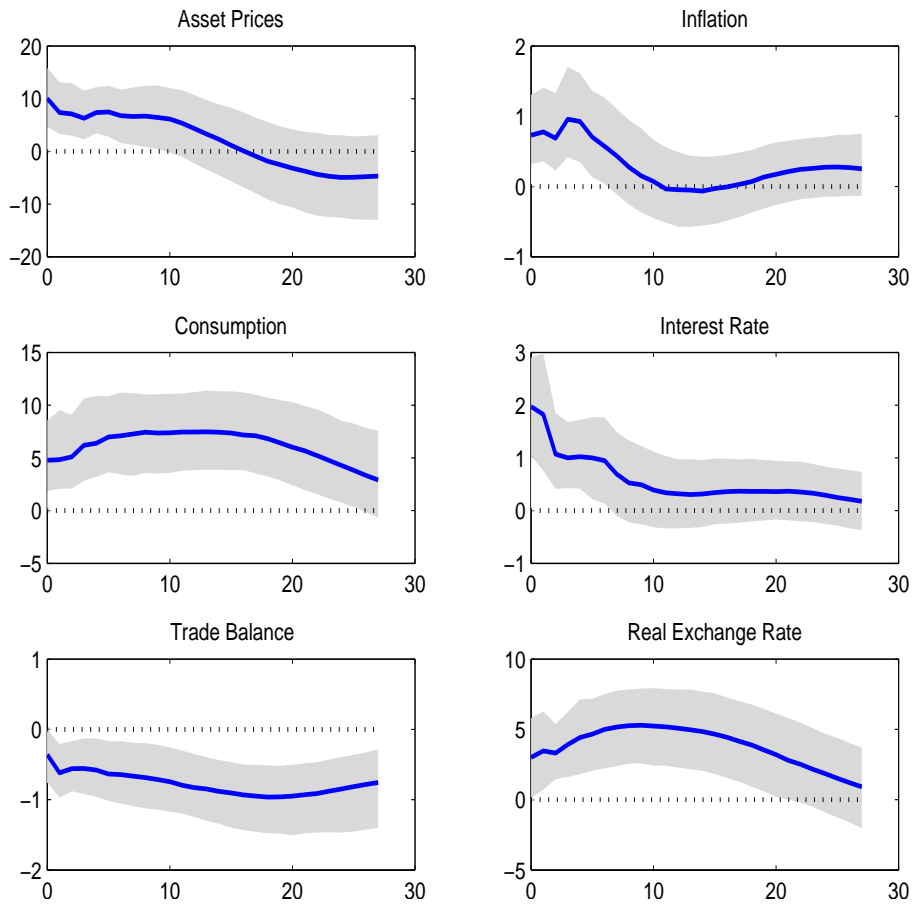


Figure 7: United States- Impulse Response following an Asset Price Shock

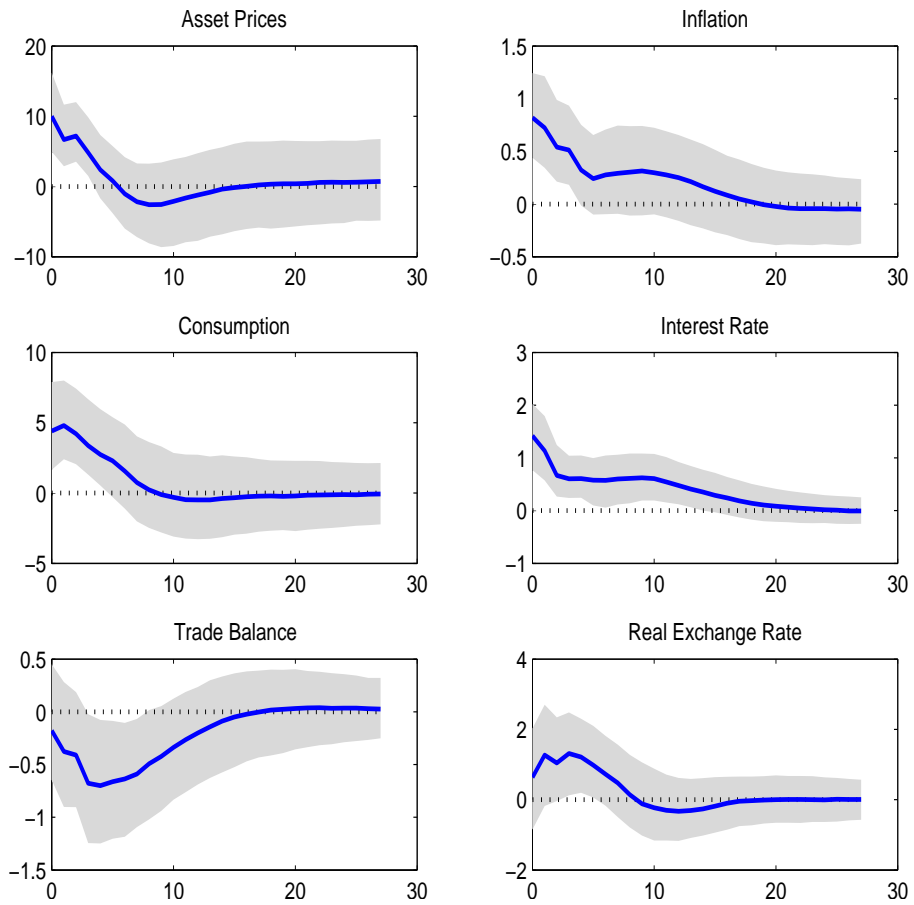


Figure 8: France- Impulse Response following an Asset Price Shock

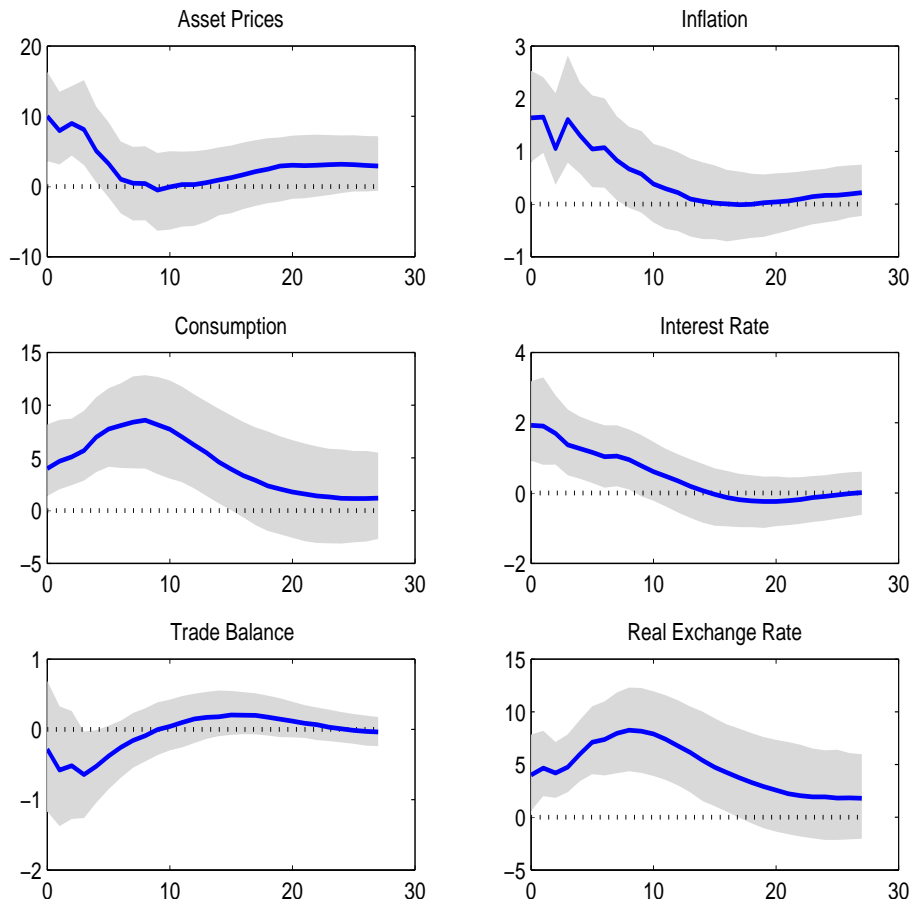


Figure 9: Australia- Impulse Response following an Asset Price Shock

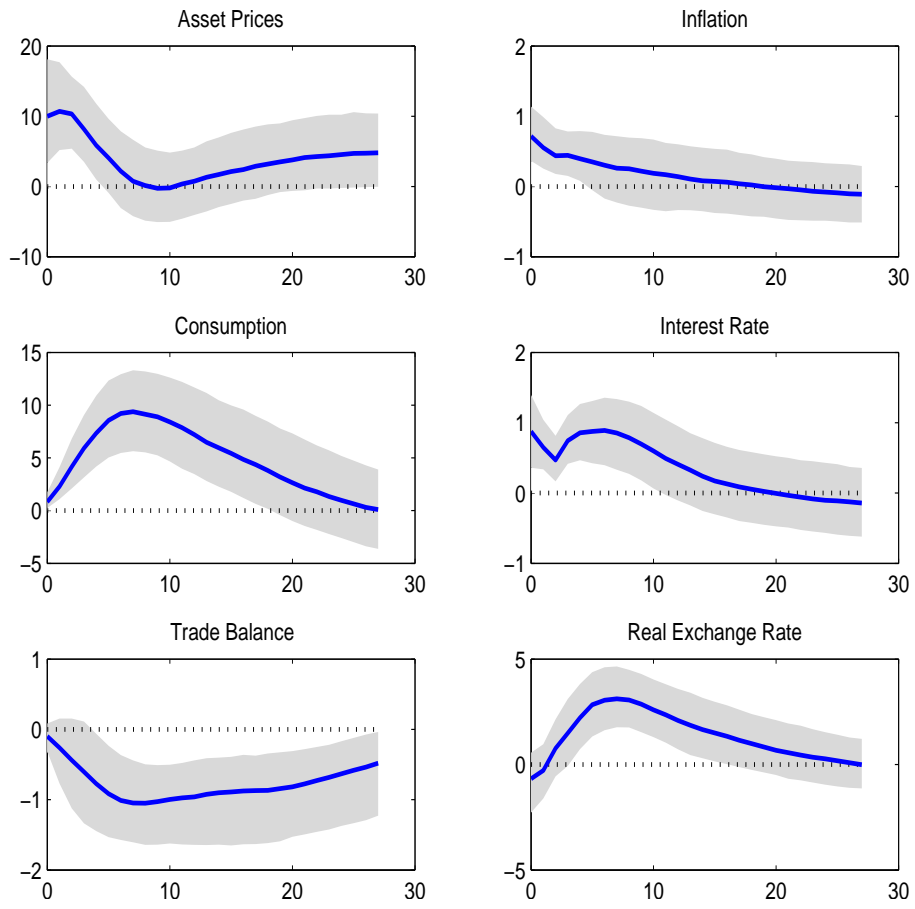


Figure 10: Germany - Impulse Response following an Asset Price Shock

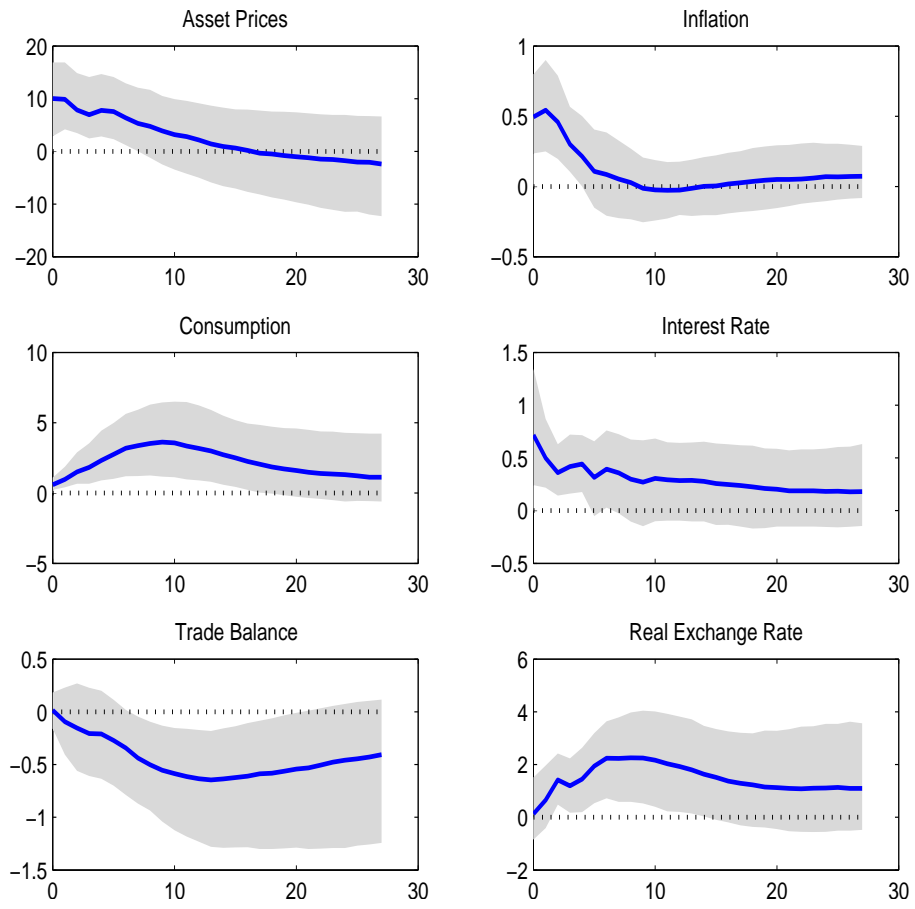


Figure 11: Finland- Impulse Response following an Asset Price Shock

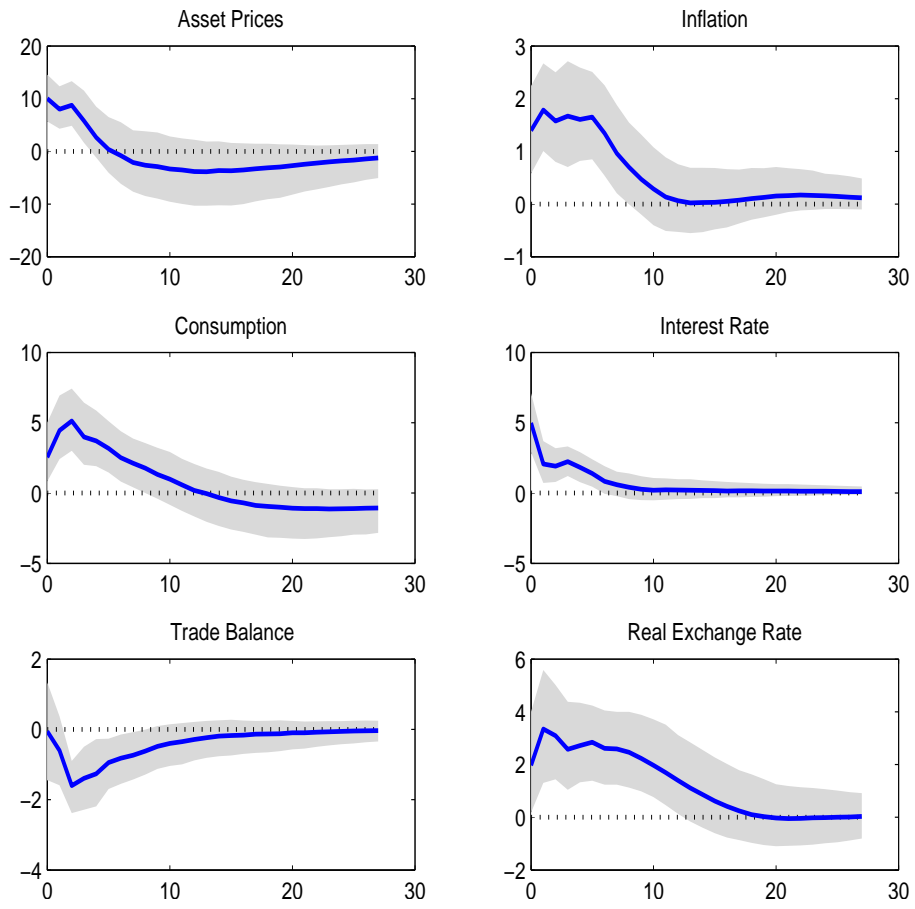


Figure 12: Korea - Impulse Response following an Asset Price Shock

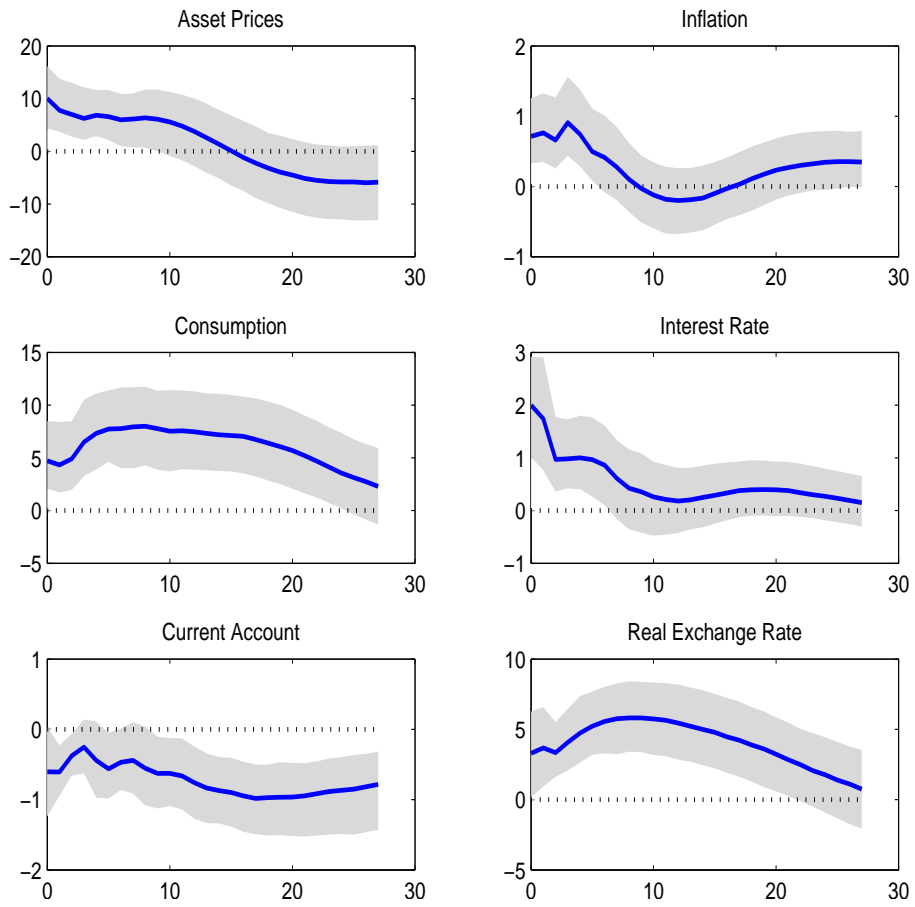


Figure 13: United States- Impulse Response following an Asset Price Shock with Current Account

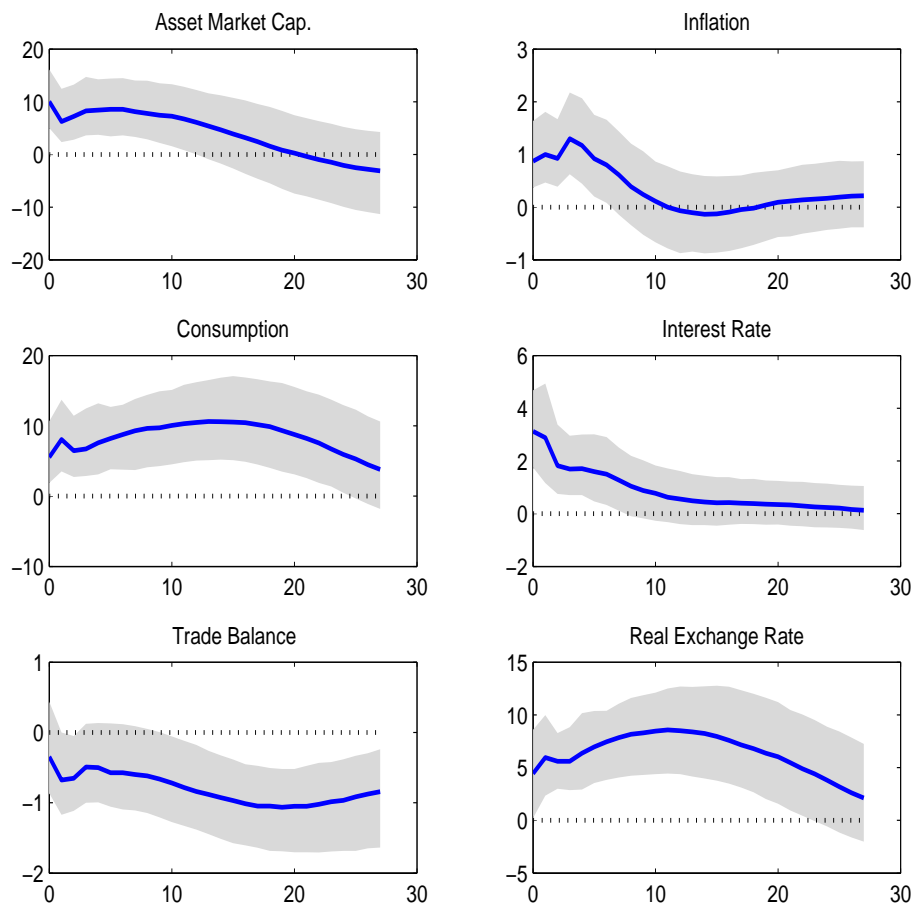


Figure 14: United States- Impulse Response following an Asset Price Shock with Equity Market Capitalization

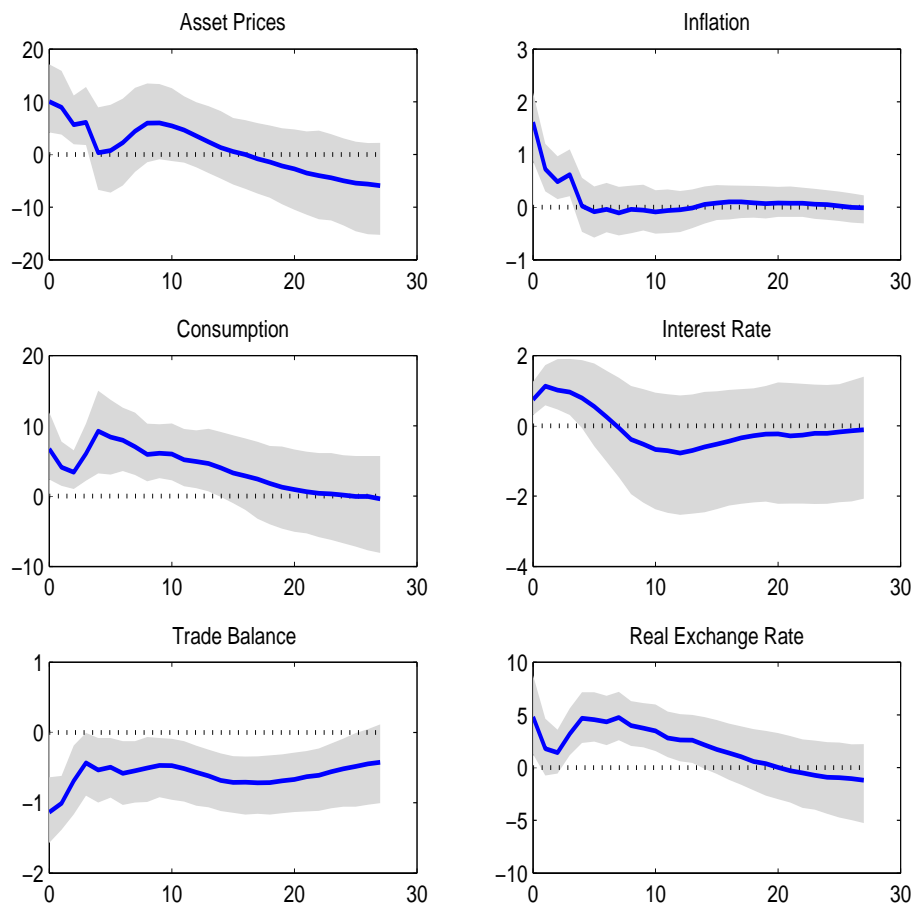


Figure 15: United States- Impulse Response following an Asset Price Shock with time sample 1990-2007

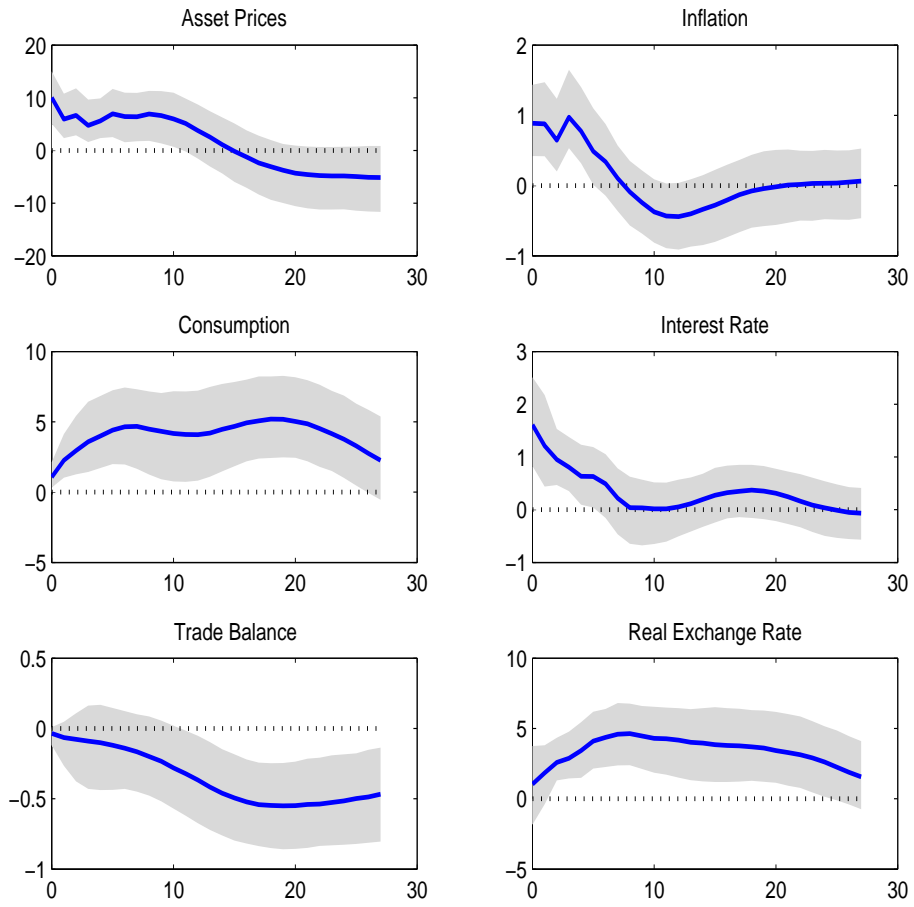
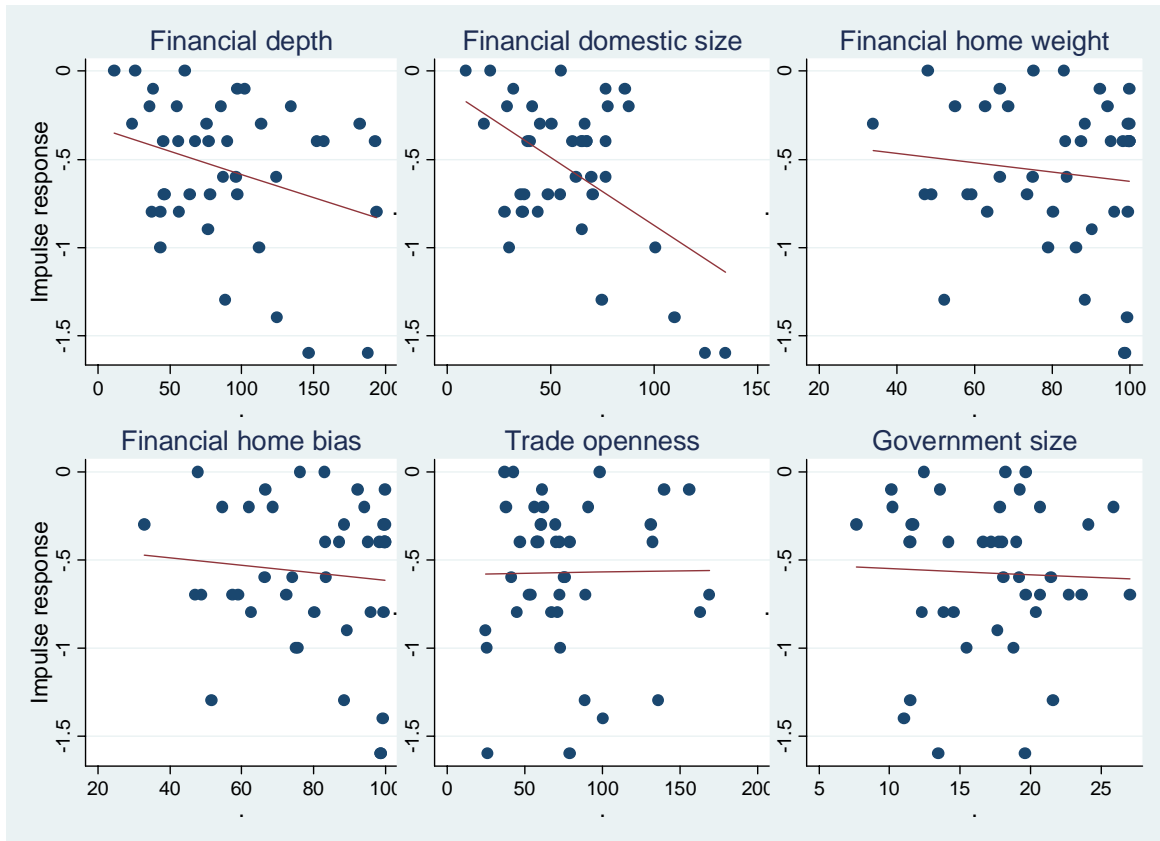


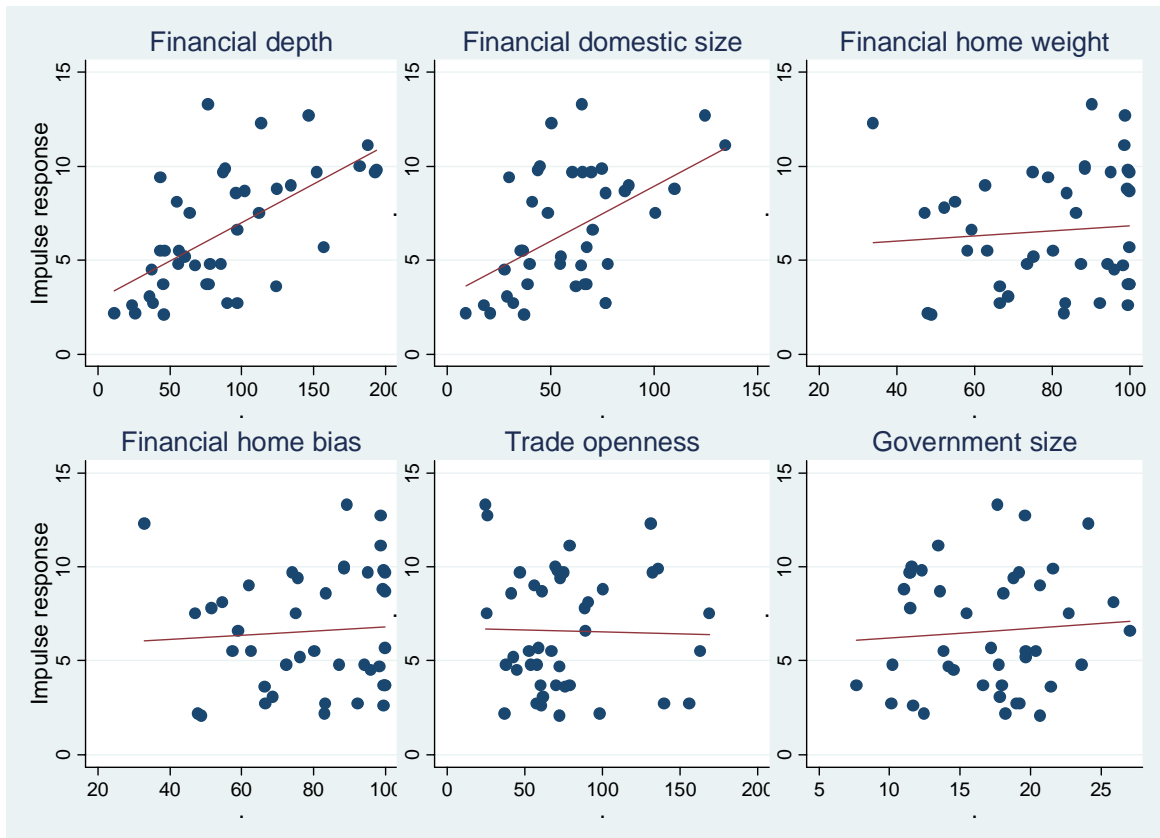
Figure 16: United States- Impulse Response following an Asset Price Shock with including emerging markets in the rest of the world sample

Figure 17: Correlation between impulse responses and potential determinants

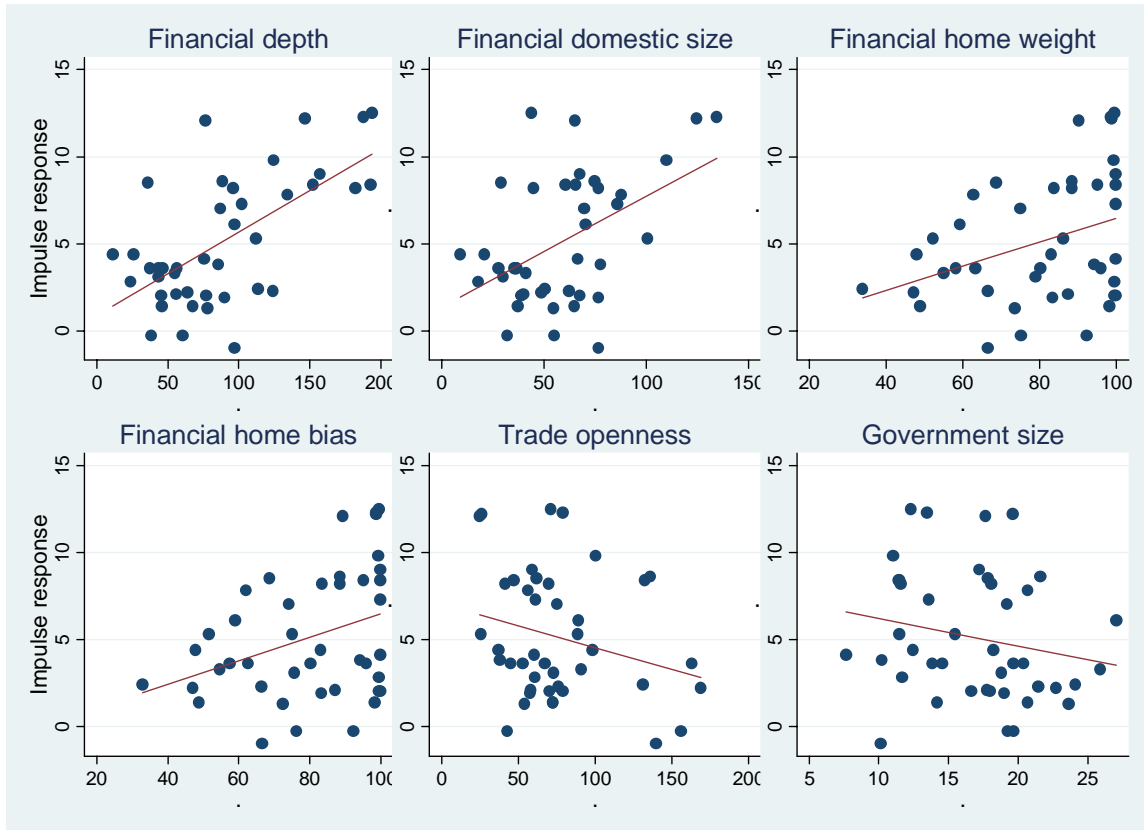
A. Peak impulse response of trade balance



B. Peak impulse response of private consumption



C. Peak impulse response of real effective exchange rate (REER)

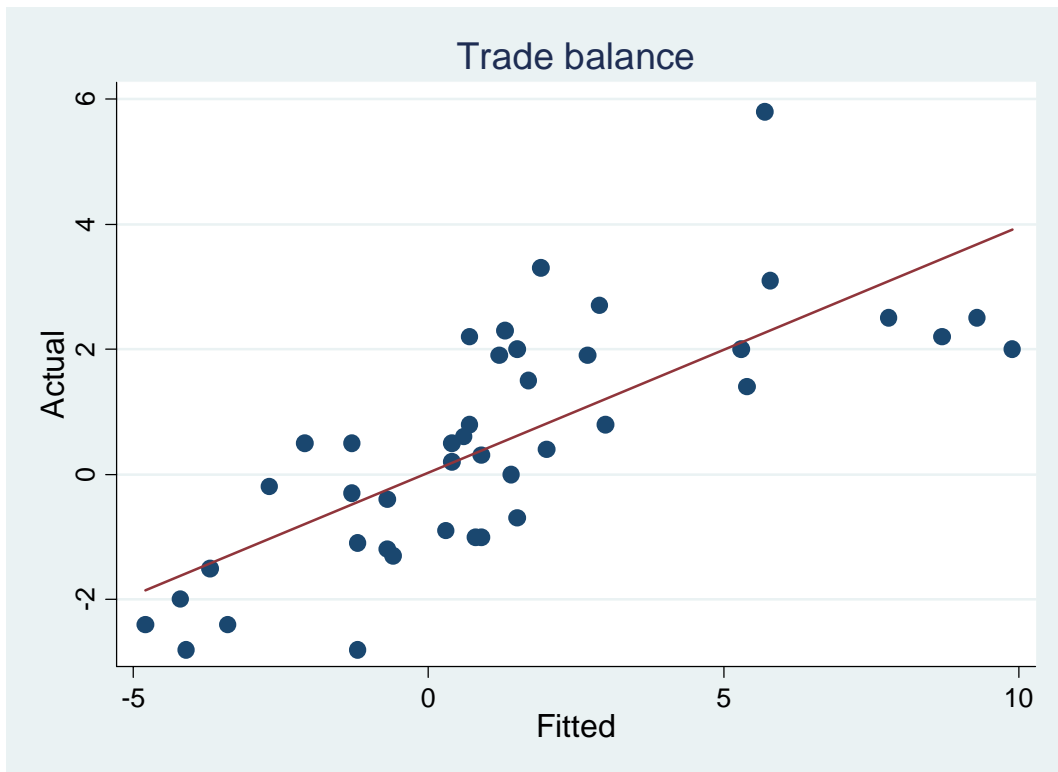


Notes: The figure shows the relationship, for the extended sample of 42 countries, between the peak impulse responses of three of the endogenous variables (the trade balance in Panel A, for private consumption in Panel B, and for the REER in Panel C) to a positive 10% relative equity price shock and the potential determinants. The lines represent the linear fit between each pair of variables.

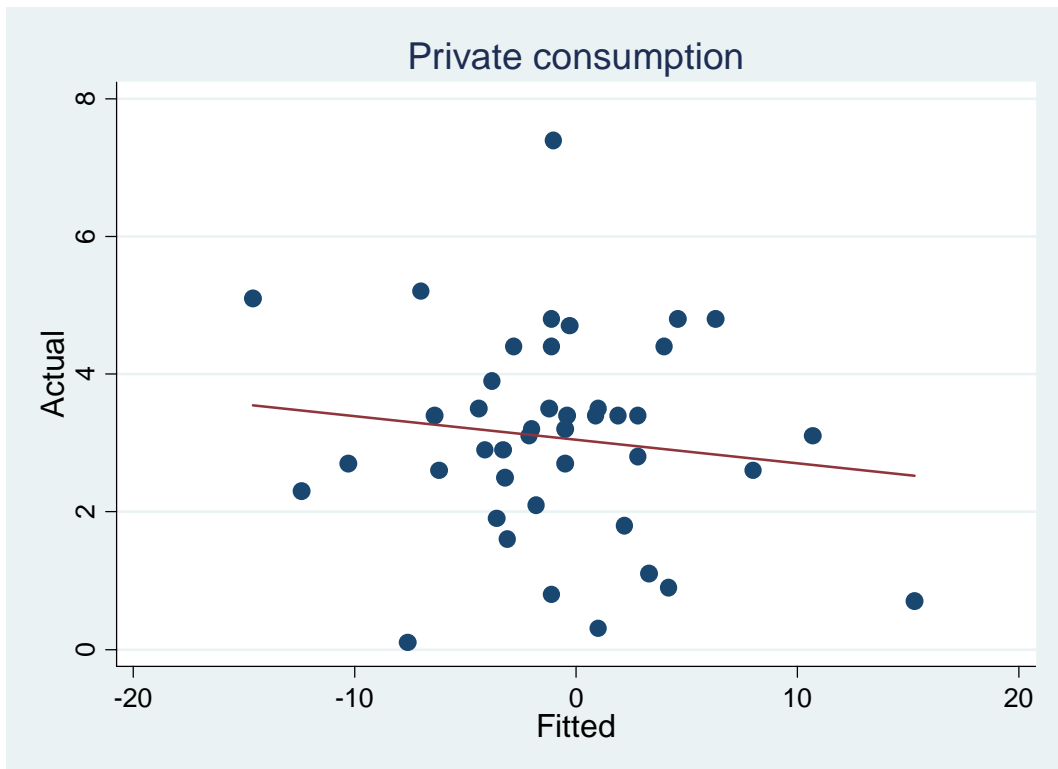
'*Financial depth*' is defined as the ratio of equity market capitalisation to GDP; '*financial domestic size*' as the ratio of domestic equity market capitalisation owned by domestic investors to domestic GDP; '*financial home weight*' as the share of domestic investors' equity invested in domestic equity markets ($100-w_i$); '*financial home bias*' as $HB_{i,t} = 1 - w_i/w_i^*$, with $HB_i=0$ indicating no equity home bias and $HB_i=1$ a perfect home bias; '*trade openness*' as the ratio of exports plus import to GDP; '*size of government*' as the ratio of government consumption to GDP. All numbers are in percent and are averages over the period 2000-2007.

Figure 18: Projections for the 2008-09 financial crisis

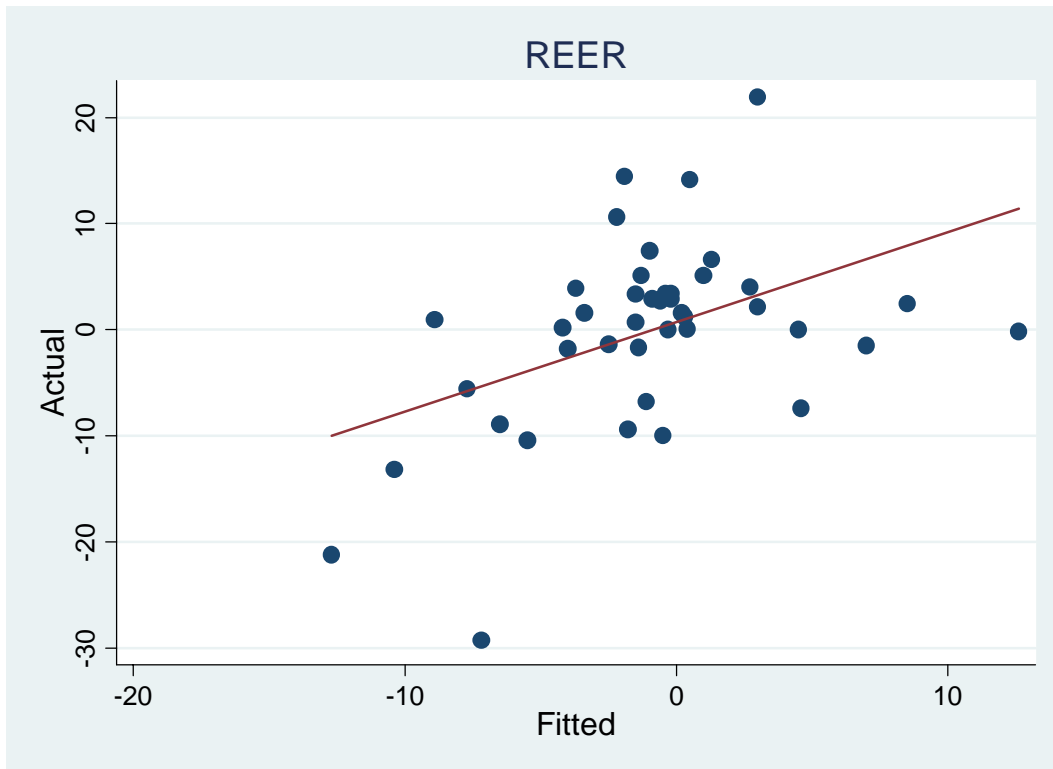
A. Actual versus Fitted – Trade balance



B. Actual versus Fitted – Private consumption



C. Actual versus Fitted – Real effective exchange rate (REER)



Notes: The figure shows the relationship, for the extended sample of 42 countries, between the actual change in the respective variable between the end 2007 and the end of 2009, and the projected change in this variable based on the relative equity market return for a country and that variable's elasticity to equity market shocks from the model for each country.