

DISCUSSION PAPER SERIES

No. 7892

MONETARY POLICY MISTAKES AND THE EVOLUTION OF INFLATION EXPECTATIONS

Athanasios Orphanides and John C Williams

INTERNATIONAL MACROECONOMICS



Centre for **E**conomic **P**olicy **R**esearch

www.cepr.org

Available online at:

www.cepr.org/pubs/dps/DP7892.asp

MONETARY POLICY MISTAKES AND THE EVOLUTION OF INFLATION EXPECTATIONS

**Athanasios Orphanides, Central Bank of Cyprus and CEPR
John C Williams, Federal Reserve Bank of San Francisco**

Discussion Paper No. 7892
June 2010

Centre for Economic Policy Research
53–56 Gt Sutton St, London EC1V 0DG, UK
Tel: (44 20) 7183 8801, Fax: (44 20) 7183 8820
Email: cepr@cepr.org, Website: www.cepr.org

This Discussion Paper is issued under the auspices of the Centre's research programme in **INTERNATIONAL MACROECONOMICS**. Any opinions expressed here are those of the author(s) and not those of the Centre for Economic Policy Research. Research disseminated by CEPR may include views on policy, but the Centre itself takes no institutional policy positions.

The Centre for Economic Policy Research was established in 1983 as an educational charity, to promote independent analysis and public discussion of open economies and the relations among them. It is pluralist and non-partisan, bringing economic research to bear on the analysis of medium- and long-run policy questions.

These Discussion Papers often represent preliminary or incomplete work, circulated to encourage discussion and comment. Citation and use of such a paper should take account of its provisional character.

Copyright: Athanasios Orphanides and John C Williams

June 2010

ABSTRACT

Monetary Policy Mistakes and the Evolution of Inflation Expectations*

What monetary policy framework, if adopted by the Federal Reserve, would have avoided the Great Inflation of the 1960s and 1970s? We use counterfactual simulations of an estimated model of the U.S. economy to evaluate alternative monetary policy strategies. We show that policies constructed using modern optimal control techniques aimed at stabilizing inflation, economic activity, and interest rates would have succeeded in achieving a high degree of economic stability as well as price stability only if the Federal Reserve had possessed excellent information regarding the structure of the economy or if it had acted as if it placed relatively low weight on stabilizing the real economy. Neither condition held true. We document that policymakers at the time both had an overly optimistic view of the natural rate of unemployment and put a high priority on achieving full employment. We show that in the presence of realistic informational imperfections and with an emphasis on stabilizing economic activity, an optimal control approach would have failed to keep inflation expectations well anchored, resulting in highly volatile inflation during the 1970s. Finally, we show that a strategy of following a robust first-difference policy rule would have been highly successful in the presence of informational imperfections. This robust monetary policy rule yields simulated outcomes that are close to those seen during the period of the Great Moderation starting in the mid-1980s.

JEL Classification: E52

Keywords: Great Inflation, model uncertainty, natural rate of unemployment, rational expectations and robust control

Athanasios Orphanides
Governor
Central Bank of Cyprus
80 Kennedy Avenue
P.O.Box 25529
CY-1395 Nicosia
CYPRUS

Email:

athanasios.orphanides@centralbank.gov.cy

John C Williams
Federal Reserve Bank of San
Francisco
101 Market Street
San Francisco, CA 94105
USA

Email: john.c.williams@sf.frb.org

For further Discussion Papers by this author see:
www.cepr.org/pubs/new-dps/dplist.asp?authorid=145212

For further Discussion Papers by this
author see:

www.cepr.org/pubs/new-dps/dplist.asp?authorid=160081

* We thank Nick Bloom, Bob Hall, Seppo Honkapohja, Andy Levin, John Taylor, Bharat Trehan, and participants at the NBER Conference on the “Great Inflation” and other presentations for helpful comments and suggestions. We also thank Justin Weidner for excellent research assistance. The opinions expressed are those of the authors and do not necessarily reflect views of the Central Bank of Cyprus, the Governing Council of the European Central Bank, the management of the Federal Reserve Bank of San Francisco, or the Board of Governors of the Federal Reserve System.

Submitted 11 June 2010

In monetary policy central bankers have a potent means for fostering stability in the general price level. By training, if not also by temperament, they are inclined to lay great stress on price stability. . . . And yet, despite their antipathy to inflation and the powerful weapons they could yield against it, central bankers have failed so utterly in this mission in recent years. In this paradox lies the anguish of central banking. (Arthur Burns, 1979, p. 7)

1 Introduction

Numerous explanations have been put forward for the policy failures that led to the Great Inflation of the late 1960s and 1970s in the United States. But one explanation that may be the most worrisome for the future is that these policy mistakes were made by otherwise well-informed and well-intentioned policymakers, free of institutional and political constraints. The epigraph quoted above, from the 1979 Per Jacobsson Lecture Arthur Burns delivered shortly after the end of his tenure as Chairman of the Federal Reserve, exemplifies this concern. In this paper, we provide a historical account of the Great Inflation and subsequent evolution of the economy in the United States using an estimated model with such a benevolent and sophisticated policymaker. We examine how the economy would have fared if the Federal Reserve had applied modern optimal control techniques—of the type recommended by many academic researchers today—to reach its policy decisions from the middle of the 1960s on.¹ We then compare the resulting simulated outcomes to those obtained under alternative monetary policy strategies designed to be robust to model misspecification.

The main thesis of this paper is that the modern optimal control approach to monetary policy is prone to committing the same types of policy errors that led to the Great Inflation, while alternative robust policy strategies could have fared much better. Our reading of the narrative evidence highlights three critical mistakes that contributed to the unmooring

¹Optimal control methods were first developed in the 1960s and have gained popularity in the academic literature during the past 10 years. See Svensson and Woodford, 2003; Woodford, 2003; Giannoni and Woodford, 2005; and Svensson and Tetlow, 2005, for modern derivations and applications of optimal control techniques to monetary policy. See Levin and Williams (2003) and Orphanides and Williams (2008, 2009) for analysis of the optimal control approach to realistic degrees of uncertainty.

of inflation expectations and the resulting runaway inflation of the Great Inflation. First, policymakers placed a high priority on stabilizing real economic activity relative to price stability. Second, they severely overestimated the productive capacity of the economy during the critical period of 1965-1975. In particular, contemporaneous measures of the unemployment rate corresponding to full employment were significantly lower than retrospective estimates. Third, they were overly confident of their understanding of the precise linkage between measures of utilization gaps and inflation. The modern optimal control approach is not designed to protect against any of these three errors.

This paper provides a “stress test” of optimal control policies and other policy strategies to see how they would have fared in times of particular macroeconomic turmoil and when the central bank faced imperfect information. The 1960s and 1970s provide an ideal laboratory for such an experiment. The U.S. economy was buffeted by large shocks, providing severe stress to the economy, and the realized macroeconomic performance was abysmal. Our analysis is related to that of Orphanides (2002) and Orphanides and Williams (2005a), who show that a strong response to flawed measures of economic slack contributed to the poor performance during the 1960s and 1970s. The contribution of the current paper is to analyze the performance of optimal control policies and alternative policy approaches using counterfactual simulations of the U.S. economy over the past several decades. In so doing, we aim to use the experiences of the past to glean lessons for the design of robust monetary policy for the future.

Our model respects the natural rate hypothesis and shares key features with modern models used for monetary policy analysis. We investigate what would have happened over history had policymakers implemented state-of-the-art optimal control methods under the assumption of rational expectations. We focus on the difficulties associated with anchoring inflation expectations when policymakers attempt to maintain a high degree of employment stability relative to price stability in an environment where the central bank has imperfect information about the economy. The estimated model confirms the presence of adverse supply shocks and natural rate misperceptions during the 1970s, which caused policy to

become overly expansionary. However, we find that these errors alone cannot account for the Great Inflation experience.

Using counterfactual simulations, we show that in the absence of informational imperfections, following the optimal control policy during the 1960s and 1970s would have maintained reasonably well-anchored inflation expectations and succeeded in achieving a favorable degree of economic and price stability. Under these assumptions, monetary policy could have done a very good job offsetting the shocks that buffeted the economy during this period.

However, our model simulations also show that informational imperfections, such as policymakers' misperceptions of the natural rate of unemployment, significantly reduce the effectiveness of this approach to policy. The presence of imperfect knowledge amplifies the effects of the underlying shocks, and optimal control monetary policies designed assuming complete information would have failed to keep inflation expectations well anchored. Indeed, optimal control policies would have avoided the Great Inflation only if the weight given to stabilizing the real economy were relatively modest—with the best results achieved if most weight were placed on stabilizing prices.

We also examine an alternative policy strategy that could have been more robust and avoided this experience, even in the presence of supply shocks and natural rate misperceptions. We show that such a strategy would have been very successful at stabilizing inflation and economic activity, despite the large shocks of the 1970s. A striking result is that this policy rule yields simulated outcomes close to the realized behavior of the economy during the Great Moderation starting in the mid-1980s, suggesting that the actual practice of monetary policy during this period changed in ways that incorporated the key properties of the robust monetary policy rule.

The remainder of the paper is organized as follows. Section 2 examines the narrative evidence of policymakers' views on the natural rate of unemployment and the importance of stabilizing economic activity. The model of the U.S. economy and its estimation are described in Section 3. Section 4 describes the optimal control monetary policy and its

implementation in the model simulations. The models of expectations formation and the simulation methods are described in Sections 5 and 6, respectively. Section 7 examines the performance of the optimal control policy using counterfactual model simulations. Section 8 analyzes the performance of a simple robust monetary policy rule, and Section 9 concludes.

2 A Narrative History

In this section, we examine the narrative evidence regarding the views of policymakers regarding the natural rate of unemployment and the role of stabilizing real activity at “full employment” before, during, and after the Great Inflation.² We use this narrative evidence to inform the specification of monetary policy in the model simulations reported in the subsequent sections of the paper.

To set the stage for later events, it is useful to recall the evolution of the policy debate in the post-World War II period. In the Employment Act of 1946, Congress declared that “it is the continuing policy and responsibility of the Federal Government to use all practicable means ... to promote maximum employment, production and purchasing power” (quoted in Council of Economic Advisers, 1966, p. 170).³ Until the 1960s, policymakers interpreted the Employment Act of 1946 to be a broad mandate to protect price stability, that is, to promote “purchasing power” and growth and to dampen business cycle fluctuations. In congressional testimony in August 1957, for example, Federal Reserve Chairman William McChesney Martin stated that “[t]he objective of the System is always the same—to promote monetary and credit conditions that will foster sustained economic growth together with stability in the value of the dollar.” To this end, he stressed the importance of price stability: “Price stability is essential to sustainable growth. Inflation fosters maladjustments” (Martin, 1957, p. 8).

During the 1960s, an increasing number of economists argued that fiscal and monetary

²See, Mayer (1999), Meltzer (2003) and Hetzel (2008a), among others, for detailed histories of Federal Reserve policy during this period.

³Chapter 7 of the 1966 *Economic Report of the President (ERP)* was devoted to the 20 years of experience with the Act since it became law on February 20, 1946. This edition of the *ERP*, published in early 1966, provides a useful snapshot of policy thinking at the start of the Great Inflation.

policy should play a more active role in managing aggregate demand with the goal of achieving and maintaining full employment. In 1961, the incoming Council of Economic Advisers (CEA) adopted what became known as the “New Economics,” which was highlighted in the 1962 Economic Report of the President (Council of Economic Advisers, 1962). The new strategy was eloquently summarized by Walter Heller, who, according to *Time Magazine*, as “Chief Economic Adviser of the Kennedy Council, presided over the birth of the New Economics as a practical policy” (*Time Magazine*, 1965, p. 67A). Heller said:

The promise of modern economic policy, managed with an eye to maintaining prosperity, subduing inflation, and raising the quality of life, is indeed great. And although we have made no startling conceptual breakthroughs in economics in recent years, we *have*, more effectively than ever before, harnessed the existing economics—the economics that has been taught in the nation’s college classrooms for some twenty years—to the purposes of prosperity, stability, and growth. (Heller, 1966, p. 116, emphasis in the original)

A key aspect of the New Economics was a heightened focus on achieving a desired *level* of economic activity, as measured by the unemployment rate or the level of GDP, rather than the less demanding goal of economic expansion. This focus on achieving the economy’s potential level of activity necessitated the measurement of potential output and the unemployment rate corresponding to full employment. Arthur Okun, Chairman of the CEA in the late 1960s, later summarized the implications of the new strategy for economic policy as follows:

The revised strategy emphasized, as the standard for judging economic performance, whether the economy was living up to its potential rather than merely whether it was advancing. Ideally, total demand should be in balance with the nation’s supply capabilities. When the balance is achieved, there is neither the waste of idle resources nor the strain of inflationary pressure. The nation is then actually producing its potential output. (Okun, 1970, p. 40)

Okun explained that the New Economics reflected a “shift in emphasis from the achievement of expansion to the realization of potential” (p. 41) and explained how this implied greater policy activism:

[T]he focus on the gap between potential and actual output provided a new scale for the evaluation of economic performance, replacing the dichotomized business cycle standard which viewed expansion as satisfactory and recession as unsatisfactory. This new scale of evaluation, in turn, led to greater activism in economic policy: As long as the economy was not realizing its potential, improvement was needed and government had a responsibility to promote it. (p. 41)

The shift in emphasis towards more explicit targets for employment and the level of economic activity was not intended to downplay the need to preserve price stability. The twin policy objectives of full employment and price stability were stressed repeatedly, starting with the very first study that provided the quantitative definitions of full employment that would shape policy throughout the 1960s: “The full employment goal must be understood as striving for maximum production without inflation pressure” (Okun, 1962, p. 82).

The New Economics also emphasized the importance of monetary policy in achieving these goals. Indeed, the essence of monetary policy was seen in a rather conventional manner not inconsistent with current views. According to the 1962 *Economic Report of the President*: “The proper degree of ‘tightness’ or ‘easiness’ of monetary policy . . . depend[s] on the state of the domestic economy, on the fiscal policies of the Government, and on the international economic position. When the economy is in recession or beset by high unemployment and excess capacity, monetary policy should clearly be expansionary. . . . When demand is threatening to outrun the economy’s production potential, monetary policy should be restrictive” (Council of Economic Advisers, 1962, p. 85). As this quote makes clear, such a policy depends crucially on measuring the economy’s capacity.

The critical test for the New Economics would begin in 1965, when the economy was nearing what was perceived at the time to be full employment. The apparent success of

economic policy up to that point was the topic of the cover story of the December 1965 *Time* magazine. The story noted that “[e]conomists have descended in force from their ivory towers and now sit confidently at the elbow of almost every important leader in Government and business, where they are increasingly called upon to forecast, plan and decide” (p. 65). Indeed, Okun later remarked, “The high-water mark of the economists prestige in Washington was probably reached late in 1965” (1970, p. 59).

Although the New Economics held sway at the CEA and at many academic institutions, Federal Reserve Chairman Martin remained skeptical that policymakers would ever possess the precise knowledge of the economy demanded by the policies of the New Economics. Although Martin’s attitude was interpreted by some as a mistrust of economists, it would be more accurate to describe his views as reflecting a mistrust of the fine-tuning approach advocated by some economists who were gaining influence at the time. As Sherman Maisel, an economist who joined the Board of Governors in 1965, later recounted: “The press frequently reported Martin’s dismay over the number of economists appointed to the Board. He felt that the economy was too complex to explain in detail; intuition would be lost and false leads followed if too much stress were put on measurement” (Maisel 1973, p. 114). Nonetheless, by 1965, the center of gravity at the Federal Reserve was shifting away from what we would describe as Martin’s robust policy approach toward a fine-tuning approach that sought to achieve a quantitative full-employment goal as well as price stability.

By July 1965 the unemployment rate had fallen to about 4-1/2 percent and the balance of payments was deteriorating. Martin believed that policy needed to be tightened in order to restrain inflationary pressures. During the second half of 1965, he attempted to forge a consensus at the Federal Reserve towards policy tightening. But the Council of Economic Advisers and like-minded economists at the Federal Reserve argued against such a preemptive move. In their view, a 4 percent unemployment rate corresponded to full employment. Therefore, the economy was operating below its full-employment level and inflationary pressures were unlikely to emerge.⁴

⁴The CEA (1962) put the unemployment rate corresponding to full employment at 4 percent. The 1962 *Economic Report of the President* indicated that “in the existing economic circumstances, an unemployment

Martin postponed proposing a policy tightening until December 1965, when, despite significant opposition from members of the Board of Governors, he felt it was no longer prudent to wait. On December 3, 1965, the Federal Reserve Board increased the discount rate from 4.0 to 4.5 percent with four members of the Board voting in favor and three voting against the rate hike. The statement explained that: “With slack in manpower and productive capacity now reduced to narrow proportions, with the economy closer to full potential than at any time in nearly a decade ... it was felt that excessive additions to money and credit availability in an effort to hold present levels of interest rates would spill over into further price increases. Such price rises would endanger the sustainable nature of the present business expansion” (Board of Governors of the Federal Reserve System, 1965, p. 1668). Governors Robertson, Mitchell, and Maisel dissented from the discount rate action “on the ground that it was at least premature in the absence of more compelling evidence of inflationary dangers” (Board of Governors of the Federal Reserve System, 1965, p. 1668).

In remarks that were delivered a few days later, on December 8, Chairman Martin had an opportunity to explain his reasoning for the rate hike:

The Federal Reserve, in all its actions, aims always at the same goal: to help the economy move forward at the fastest sustainable pace. We reach our destination most rapidly as well as more assuredly when we travel at maximum *safe* speed—and this speed cannot be the same under all conditions and at all times. . . .

To me, the effective time to act against inflationary pressures is when they are in the development stage—before they have become full-blown and the damage has been done. Precautionary measures are more likely to be effective than remedial action: the old proverb that an ounce of prevention is worth a pound of cure applies to monetary policy as well as to anything else. . . .

rate of about 4 percent is a reasonable and prudent full employment target for stabilization policy” (p. 46). Although this goal of a 4 percent unemployment rate may appear overly ambitious in retrospect, it did not appear so at the time. Indeed, many considered the 4 percent goal for the unemployment rate insufficiently ambitious. For them, 4 percent was seen to be an interim goal, with the ultimate objective being even lower unemployment.

[S]o long as inflation is merely a threat rather than a reality, it is enough to prevent the pace of economic expansion from accelerating dangerously. But once that pace has become unsustainably fast, then it becomes necessary to reduce the speed, and once such a reduction is started, there is no assurance it can be stopped in time to avoid an actual downswing (Martin, 1965, emphasis in original).

The discount rate increase prompted a bruising congressional hearing the following week, on December 13-14, 1965. The hearing on “Recent Federal Reserve Action and Economic Policy Coordination” (U.S. Congress, 1966) served as a forum for criticizing Chairman Martin for tightening policy. It provides an invaluable glimpse into the policy debate at the time and highlights the crucial role that perceptions about full employment had acquired. Martin represented the majority view and Governors Mitchell and Maisel, who opposed the tightening, represented the dissenting view at the hearing on December 13, 1965. At the hearing, it was confirmed that a crucial reason for the disagreement on the tightening was a disagreement about the risks to the inflation outlook. Furthermore, details emerged as to the assessments of the Chairman and dissenting members of the Board regarding what constituted full employment.

The discussion centered on whether a 4 percent unemployment rate was the appropriate definition of full employment. Martin remarked, “As long as unemployment of manpower and plant capacity was greater than could be considered acceptable or normal, we had every reason to lean on the side of monetary stimulus.” Senator Jacob Javits asked, “Do you consider a 4 percent unemployment acceptable and normal and is that the basis for your decision?” (U.S. Congress, 1966, p. 116). Noting that this is a long-standing debate among experts, Martin replied that, although the Federal Reserve Board would want “as low a level as it is possible to have,” he did not know what the right level ought to be. Responding to subsequent questions he added, “We [the Board of Governors] have never addressed ourselves to a definitive discussion of the 3 or 4 or 5 percent.” But he admitted that in making the policy decision the Board deemed that “we were approaching a state

of full employment” (pp. 116-117). The unemployment rate had fallen to 4.2 percent in November 1965.

Those arguing against a policy tightening pointed to the fact that unemployment was still above 4 percent and therefore inflationary pressures should be absent, despite the fact that inflation, as measured by the consumer price index, had been edging up for some time. In his prepared statement at the hearing, Governor Mitchell explained that the challenge to policy at the end of 1965 was to “ease the economy onto a steady growth path at full employment,” adding, “I believe this can be done with reasonably stable prices” (United States Congress, 1966, p. 21). But, with the unemployment rate exceeding 4 percent, he disagreed that a policy tightening was necessary. “[T]he evidence on prices does not, in my view, now call for more monetary restraint than is already being applied” (p. 22). The crux of his argument evolved around the definition of full employment: “Those who regard 4 percent unemployment ... as the approximate total of the frictionally unemployed ... may feel that we have achieved our employment goals and that any further progress in reducing unemployment cannot come from aggregate demand. ... I am not yet ready to agree that there is no further room for compression of the unemployment rate” (pp. 22-23).

Indeed, Governor Maisel argued that 4 percent may have been too high a target for the unemployment rate. He explained that he disagreed with the policy decision because he felt that policy tightening was premature. In his prepared remarks, he noted, “Raising the discount rate would be interpreted as a view by the Board that because full employment increases inflationary problems, restrictive monetary policy must be invoked at its mere approach” (p. 31). Asked about his views on full employment, in the light of the various efforts to reduce frictional unemployment he replied, “My assumption is that the retraining enables us to say that 4 percent unemployment was only an interim goal. ... As a result 4 percent might have been a proper goal five years ago. ... Now we need to think of these retraining programs you have cited and see what our present goal should be. Should it be 3 percent or what?” (p. 181). The view that the interim goal for unemployment could perhaps be adjusted downwards was also shared by the Council of Economic Advisers. As

noted in the *Economic Report of the President* published in early 1966, “The unemployment rate has now virtually reached the interim target and is projected to fall below 4 percent in 1966. There is strong evidence that the conditions originally set for lowering the target are in fact being met, and that the economy can operate efficiently at lower unemployment rates” (Council of Economic Advisers, 1962, p. 75).

This debate centered on estimates of the unemployment rate consistent with price stability and the proper policy response to movements in inflation and unemployment. Importantly, the participants did not possess fundamentally divergent views of the inflation process. Indeed, both sides use a relatively conventional understanding of the process of inflation and the effect of “gaps” on inflation. In particular, policymakers clearly believed that they had the power to control inflation through monetary policy. The 1966 *Economic Report of the President* provides a view of inflation that relates well with models used today:

As a first approximation, the classical law of supply and demand leads one to expect that the change in the price level will depend mainly on the size of the gap between capacity and actual output. The more production falls short of potential—i.e., the greater is excess productive capacity—the further prices should drop. Conversely, when demand outruns aggregate supply, the imbalance should raise prices. ...

Expectations and attitudes also affect price changes. An economy accustomed to price stability is less vulnerable to inflation” (Council of Economic Advisers, 1966, pp. 63-65).

Note the explicit recognition of the role of expectations in the determination of inflation.⁵

Even when inflation got noticeably worse in the second half of the 1960s, the mistaken

⁵To be sure, there are differences between the reasoning in the 1960s and modern models. One important difference is that the models of the New Economics era typically implied a long-term trade-off between inflation and unemployment, whereas modern models such as ours typically respect the natural rate hypothesis. But this difference is not key for explaining the Great Inflation in our view. As explained by Modigliani and Papademos (1975), in both types of models, there exists a rate of unemployment (the NAIRU) that is consistent with the policymaker’s definition of reasonable price stability. In our model, this corresponds to the natural rate of unemployment. What is critical is that in both types of models, misperceptions about the NAIRU (or natural rate) have inflationary consequences under the optimal control approach to policy.

belief that the full-employment unemployment rate was very low continued to distort policy decisions, exacerbating inflationary pressures. Although the rise in inflation during 1966 and thereafter vindicated Martin's position, this evidence proved insufficient to stem the tide toward greater fine-tuning with an emphasis on achieving what was believed to be full employment. Later, Herbert Stein went so far as to call the belief that the natural rate of unemployment was 4 percent "the most serious error of the Nixon CEA" (Stein, 1996, p. 19). As he explained, "fascinated by the idea of 'the natural rate of unemployment,' which we thought to be 4 percent, we thought it necessary only to let the unemployment rate rise slightly above that to hold down inflation" (pp. 19-20). The resulting policy actions would have been the "optimum feasible path," except they built upon a fatally flawed view of the productive capacity of the economy. Instead of restoring stability, they led to further increases in inflation.

The inflation rate rose from below 2 percent in the early 1960s to over 5 percent by 1970. Figure 1 shows the four-quarter average of the U.S. inflation rate, measured by the GDP price deflator, from 1955 to 2003. (Note that throughout this paper, unless otherwise indicated, the figures show the four-quarter moving average of the inflation rate to reduce the visual clutter caused by quarterly volatility in this series.) For comparison, the horizontal line shows the 2 percent inflation target that we assume reflects the policymaker's price stability objective for our counterfactual simulations reported in later sections. The inflation rate was around this level before the Great Inflation and returned once again to this level in the last decade of our sample. Inflation expectations became unmoored during the Great Inflation (see Levin and Taylor, 2009, for further discussion of the evidence on inflation expectations) and only in the 1990s did they become anchored again. By the beginning of the 1980s, survey measures of long-run inflation expectations had risen to over 8 percent.

Under Arthur Burns, who became Fed Chairman in 1970, the Federal Reserve continued the activist bent with even greater force (Hetzl, 1998, Orphanides, 2003). The high degree of confidence that economists had regarding their ability to measure the capacity of the

economy and to gauge inflationary pressures is nicely illustrated by the staff briefing to the Board of Governors from August 1970 presented by John Charles Partee (who became a Governor in 1976), “there is substantial underutilization of resources, as evidenced by a 5 per cent unemployment rate and an operating rate in manufacturing estimated at well under 80 per cent of capacity. In these circumstances, there is virtually no risk that economic recovery over the year ahead would add to the inflationary problem through stimulation of excess—or even robust—demand in product or labor markets.” (Board of Governors, 1970, p. 19).

In his *Anguish* lecture, Burns admitted that the Federal Reserve was slow to recognize the upward drift in the natural rate of unemployment, thus adding to inflation (Burns, 1979). Figure 2 plots real-time estimates of the natural rate of unemployment and a retrospective measure of the natural rate equal to the Congressional Budget Office (CBO) estimates available at the time that this paper was written. The actual unemployment rate is plotted as well. The real-time series for the natural rate is taken from Orphanides and Williams (2005a), extended to include more recent data. These real-time estimates were constructed drawing on a number of sources (see Orphanides and Williams, 2002, for details). As seen in the figure, differences between real-time estimates of the natural rate of unemployment and current retrospective estimates were especially large and persistent during the second half of the 1960s and the 1970s. The mean absolute difference between the real-time and current estimates was 1.2 percentage points over this period. But such natural rate “misperceptions” are not merely a historical curiosity, with the mean absolute difference between the two measures equalling 0.6 percentage points over the period of 1980-2003.⁶

The error of overly optimistic estimates of the economy’s capacity was compounded by the high value placed on achieving full employment relative to price stability. Despite the upward trend in inflation since 1965, the Federal Reserve remained focused on stabilizing real activity, with the hope that inflationary pressures would subside. At the May 1975

⁶Note that this measure of natural rate misperceptions does not take into account uncertainty regarding the CBO’s estimates of the natural rate. Instead, it merely measures changes in the estimates that reflect changes in methodology and the effects of new data.

meeting of the Federal Open Market Committee, the Board staff argued that “there is such a large amount of slack in the economy now that real growth would have to exceed our projection by a wide margin, and for an extended period, before excess aggregate demand once again emerged as a significant problem.” (Board of Governors of the Federal Reserve, 1975, p. 26). Furthermore, “Simulations using the econometric model suggested that a considerably faster rate of expansion could be stimulated without having a significant effect on the rate of increase in prices—that a considerably more rapid rate of increase in real GNP would still be consistent with a further winding down of inflationary pressures” (p. 27). The inflation rate in fact did come down from its 1975 peak of about 10 percent over the next few years, but bottomed out above 5 percent, well in excess of conventional views of price stability.

Monetary policy moved away from the policy activism of the earlier period and towards an approach focused more on inflation stabilization only after Paul Volcker became Chairman in 1979. Volcker eschewed the fine-tuning approach and concentrated instead on the goal of price stability, seeing this as the only way to effectively reanchor inflation expectations and restore broader stability to the economy (Goodfriend and King, 2005, Hetzel, 2008b, Lindsey et al., 2005, Orphanides and Williams, 2005a). He explained his rationale in his first Humphrey-Hawkins testimony on February 19, 1980.

In the past, at critical junctures for economic stabilization policy, we have usually been more preoccupied with the possibility of near-term weakness in economic activity or other objectives than with the implications of our actions for future inflation. To some degree, that has been true even during the long period of expansion since 1975. As a consequence, fiscal and monetary policies alike too often have been prematurely or excessively stimulative or insufficiently restrictive. The result has been our now chronic inflationary problem, with a growing conviction on the part of many that this process is likely to continue. Anticipations of higher prices themselves help speed the inflationary process. ... The broad objective of policy must be to break that ominous pattern. That

is why dealing with inflation has properly been elevated to a position of high national priority. Success will require that policy be consistently and persistently oriented to that end. Vacillation and procrastination, out of fears of recession or otherwise, would run grave risks. Amid the present uncertainties, stimulative policies could well be misdirected in the short run. More importantly, far from assuring more growth over time, by aggravating the inflationary process and psychology, they would threaten more instability and unemployment.

(Volcker, 1980, pp. 2-3.)

3 An Estimated Model of the U.S. Economy

We now turn to the evaluation of alternative monetary policy strategies. We use counterfactual simulations of the estimated quarterly model of the U.S. economy described in Orphanides and Williams (2008). The specification of the model is motivated by the recent literature on micro-founded models incorporating some inertia in inflation and output (see Woodford, 2003, for a fuller discussion). The main difference from other monetary policy models is that the unemployment gap is substituted for the output gap in the model to facilitate estimation using real-time data. The two concepts are closely related in practice by Okun’s law, and the key properties of the model are largely unaffected by this choice.

3.1 The Model

The structural model consists of two equations that describe the behavior of the unemployment rate and the inflation rate and equations describing the time series properties of the exogenous shocks. To close the model, the short-term interest rate is set by the central bank, as described in the next section.

The “IS curve” equation is motivated by the Euler equation for consumption with adjustment costs or habit:

$$u_t = \phi_u u_{t+1}^e + (1 - \phi_u)u_{t-1} + \alpha_u (i_t^e - \pi_{t+1}^e - r^*) + v_t, \quad (1)$$

$$v_t = \rho_v v_{t-1} + e_{v,t}, \quad e_v \sim N(0, \sigma_{e_v}^2). \quad (2)$$

Equation (1) relates the unemployment rate, u_t , to the unemployment rate expected in the next period, one lag of the unemployment rate, and the difference between the expected ex ante real interest rate, r_t^e —equal to the difference between the nominal short-term interest rate, i_t , and the expected inflation rate in the following period, π_{t+1} —and the natural rate of interest, r^* . The unemployment rate is subject to a shock, v_t , that is assumed to follow an AR(1) process with innovation variance $\sigma_{e_v}^2$. The AR(1) specification for the shocks is based on the evidence of serial correlation in the residuals of the estimated unemployment equation, as discussed later.

The “Phillips curve” equation is motivated by the New Keynesian Phillips curve with indexation:

$$\pi_t = \phi_\pi \pi_{t+1}^e + (1 - \phi_\pi) \pi_{t-1} + \alpha_\pi (u_t - u_t^*) + e_{\pi,t}, \quad e_\pi \sim N(0, \sigma_{e_\pi}^2). \quad (3)$$

It relates inflation, π_t , (measured as the annualized percent change in the gross national product (GNP) or gross domestic product (GDP) price index, depending on the period) during quarter t to lagged inflation, expected future inflation (denoted by π_{t+1}^e), and the difference between the unemployment rate, u_t , and the natural rate of unemployment, u_t^* , during the current quarter. The parameter ϕ_π measures the importance of expected inflation on the determination of inflation, while $(1 - \phi_\pi)$ captures the effects of inflation indexation. The “markup” shock, $e_{\pi,t}$, is assumed to be a white noise disturbance with variance $\sigma_{e_\pi}^2$.

We model the low frequency behavior of the natural rate of unemployment as an exogenous AR(1) process independent of all other variables:

$$u_t^* = (1 - \rho_{u^*}) \bar{u}^* + \rho_{u^*} u_{t-1}^* + e_{u^*,t}, \quad e_{u^*} \sim N(0, \sigma_{e_{u^*}}^2). \quad (4)$$

We assume this process is stationary based on the finding using the standard augmented Dickey-Fuller test that one can reject the null of nonstationarity of the unemployment rate over 1950–2003 at the 5 percent level.

3.2 Model Estimation and Calibration

The IS curve and Phillips curve equations are estimated using forecasts from the Survey of Professional Forecasters (SPF) as proxies for the expectations that appear in the equations.⁷ Expectations are assumed to be formed in the previous quarter; that is, the expectations affecting inflation and unemployment in period t are those collected in quarter $t - 1$. This matches the informational structure in many theoretical models (see Woodford, 2003, and Giannoni and Woodford, 2005). To match the inflation and unemployment data as closely as possible with these forecasts, the first announced estimates of these series are used. These are obtained from the Real-Time Dataset for Macroeconomists maintained by the Federal Reserve Bank of Philadelphia. In estimating the inflation equation, the Congressional Budget Office (2001) estimates of the natural rate of unemployment are used as proxies for the true values over time. The data sample used for estimating the model runs from 1968:Q4 to 2004:Q2, where the starting date is the first sample point in the SPF.⁸

Estimation results are reported in equations (5) through (7), with standard errors indicated in parentheses. The IS curve equation is estimated using least squares with AR(1) residuals. Unrestricted estimation of the IS curve equation yields a point estimate for ϕ_u of 0.39, with a standard error of 0.15. This estimate is below the lower bound of 0.5 implied by theory; however, the null hypothesis of a value of 0.5 is not rejected by the data.⁹ Thus the restriction $\phi_u = 0.5$ is imposed in estimating the remaining parameters of the equation. Note that the estimated equation also includes a constant term (not shown) that provides an estimate of the natural real interest rate, which is assumed to be constant:

$$u_t = 0.5 u_{t+1}^e + 0.5 u_{t-1} + 0.056 (r_t^e - r^*) + v_t, \quad (5)$$

(0.022)

⁷Specifically, the mean forecasts of the unemployment rate and the three-month Treasury bill rate are used. The inflation forecasts are constructed using the annualized log difference of the GNP or GDP price deflator, taken from the reported forecasts of real and nominal GNP or GDP. The survey is currently maintained by the Federal Reserve Bank of Philadelphia. See Croushore (1993) and Croushore and Stark (2001) for details on the survey methodology.

⁸Expectations for the Treasury bill rate were not collected in the first few years of the sample. When these are not available, the expectations of the three-month rate implied by the slope of the term structure under the expectations hypothesis are used.

⁹This finding is consistent with the results reported in Giannoni and Woodford (2005) who, in a similar model, find that the corresponding coefficient is constrained to be at its theoretical lower bound.

$$v_t = \underset{(0.085)}{0.513} v_{t-1} + e_{v,t}, \quad \hat{\sigma}_{e_v} = 0.30, \quad (6)$$

$$\pi_t = \underset{(0.087)}{0.5} \pi_{t+1}^e + 0.5 \pi_{t-1} - 0.294 (u_t^e - u_t^*) + e_{\pi,t}, \quad \hat{\sigma}_{e_\pi} = 1.35. \quad (7)$$

Unrestricted estimation of the Phillips curve equation yields a point estimate for ϕ_π of 0.51, just barely above the lower bound implied by theory.¹⁰ For symmetry with the treatment of the IS curve, the restriction $\phi_\pi = 0.5$ is imposed and the remaining parameters are estimated using ordinary least squares. The estimated residuals for this equation show no signs of serial correlation in the price equation, consistent with the assumption of the model.

We do not estimate the model of the natural rate of unemployment; instead, we set the autocorrelation parameter, ρ_{r^*} , to 0.99 and set the unconditional mean to the sample average of the unemployment rate.

4 Monetary Policy

We focus on two alternative approaches to monetary policy. The first is the optimal control approach. The second is a simple monetary policy that is closely related to nominal income growth targeting. In both cases, the policy instrument is the nominal short-term interest rate. We assume that the central bank observes all variables from previous periods when making the current-period policy decision. We further assume that policy is conducted under commitment.

4.1 Optimal Control Monetary Policy

It is important to make clear from the start that we make no claim that Federal Reserve set policy according to the mechanical optimal control algorithms we describe in this paper during the 1960s and 1970s. Indeed, the development of formal quantitative monetary policy evaluation exercises was still in its infancy at that time. The Federal Reserve Board staff

¹⁰For comparison, Giannoni and Woodford (2005) find that the corresponding coefficient is constrained to be at its theoretical lower bound of 0.5.

first completed an ambitious project using optimal control in the mid-1970s (Kalchbrenner and Tinsley, 1976). Although Federal Reserve Governor Henry Wallich (1976) stated that “[t]he use of optimal control techniques in planning for economic stabilization is approaching the policy stage,” in fact, this project was never integrated with the policy process at the Federal Reserve during this period.¹¹ We would argue that the optimal control approach resembles the spirit of fine-tuning practiced by policymakers at that time. In any case, our goal is to evaluate the performance of such an optimal control strategy under the conditions that existed in the 1960s and 1970s.

The optimal control approach stipulates that the policy instrument is chosen to minimize the central bank’s loss function given the constraints imposed by the central bank’s model. We construct the optimal control policy rule, as is typical in the literature, assuming that the policymaker knows the true parameters of the structural model and assumes all agents use rational expectations. The parameters of the optimal control policy are computed assuming the central bank knows the natural rate of unemployment.¹² Note that for the optimal control policy, as well as the simple monetary policy rules described below, we use lagged information in the determination of the interest rate, reflecting the lagged release of data.

We assume that the central bank’s objective is to minimize a loss equal to the weighted sum of the unconditional variances of the inflation rate, the difference between the unemployment rate and the natural rate of unemployment, and the first-difference of the nominal federal funds rate:

$$\mathcal{L} = Var(\pi - 2) + \lambda Var(u - u^*) + \nu Var(\Delta(i)), \quad (8)$$

where $Var(x)$ denotes the unconditional variance of variable x . We assume an inflation target of 2 percent. In the following, we consider different values of the parameters of the

¹¹Nonetheless, it is worth noting that the loss function in Kalchbrenner and Tinsley (1976) penalized an unemployment rate above 4.8 percent and an inflation rate above 2.5 percent. This target for the unemployment rate is consistent with our analysis of real-time estimates of the natural rate of unemployment used in the model simulations in this paper. The 2.5 percent inflation target is somewhat higher than the 2 percent inflation target we assume in our model simulations.

¹²See, for example, Sargent’s (2007) description of the optimal policy approach.

loss function.¹³

The optimal control policy is described by a set of equations that describes the first-order optimality condition for monetary policy and the behavior of the Lagrange multipliers associated with the constraints on the optimization problem implied by the structural equations of the model economy. Because we are interested in describing the setting of interest rates in a potentially misspecified model, it is useful to represent the optimal control policy by an equation that relates the policy instrument to macroeconomic variables, rather than in terms of Lagrange multipliers that are model specific. There are infinitely many such representations. In the following, we focus on one representation of the optimal control policy, denoted as the “OC” policy. In the OC policy, the current interest rate depends on three lags of the inflation rate, the difference between the unemployment rate and the central bank’s estimate of the natural rate of unemployment, and the difference between the nominal interest rate and the natural rate of interest. The OC representation yields a determinate rational expectations equilibrium in our model. We find that including three lags of these variables is sufficient to very closely mimic the optimal control outcome assuming the central bank observes the natural rate of unemployment.¹⁴

As discussed previously, during much of the 1960s and 1970s, policymakers placed a great deal of weight on the stabilization of real activity. We represent such preferences with values of $\lambda = 16$ and $\nu = 1$. In that case, the OC policy is given by the following equation:

$$\begin{aligned}
 i_t = & 1.16i_{t-1} - 0.05i_{t-2} - 0.21i_{t-3} \\
 & + 0.23\pi_{t-1} - 0.07\pi_{t-2} + 0.05\pi_{t-3} \\
 & - 3.70(u_{t-1} - \hat{u}_{t-1}^*) + 2.81(u_{t-2} - \hat{u}_{t-2}^*) - 0.15(u_{t-3} - \hat{u}_{t-3}^*),
 \end{aligned} \tag{9}$$

plus a constant reflecting the constant natural rate of interest and inflation target, where \hat{u}_t^* denotes the central bank’s estimate of the natural rate of unemployment.

¹³Based on an Okun’s law type relationship, the variance of the unemployment gap is about one-fourth that of the output gap, so a choice of $\lambda = 4$ corresponds to equal weights on inflation and output gap variability.

¹⁴In deriving the OC policy, we use the innovation processes from the estimated model and set the innovation standard deviation of the natural rate of unemployment to 0.07. See Orphanides and Williams (2009) for details.

In the following, we also examine the performance of the OC policy derived for alternative values of λ . The resulting OC policy for $\lambda = 4$ is given by the following equation:

$$\begin{aligned}
i_t &= 1.17i_{t-1} + 0.02i_{t-2} - 0.28i_{t-3} \\
&+ 0.18\pi_{t-1} + 0.03\pi_{t-2} + 0.01\pi_{t-3} \\
&- 2.47(u_{t-1} - \hat{u}_{t-1}^*) + 2.11(u_{t-2} - \hat{u}_{t-2}^*) - 0.33(u_{t-3} - \hat{u}_{t-3}^*).
\end{aligned} \tag{10}$$

Compared to the OC policy derived with $\lambda = 16$, this policy is characterized by a stronger response to inflation and a much smaller response to the unemployment rate. Finally, the OC policy derived for $\lambda = 0$ and $\nu = 1$ is given by:

$$\begin{aligned}
i_t &= 1.12i_{t-1} + 0.13i_{t-2} - 0.34i_{t-3} \\
&+ 0.17\pi_{t-1} + 0.09\pi_{t-2} - 0.01\pi_{t-3} \\
&- 1.63(u_{t-1} - \hat{u}_{t-1}^*) + 1.53(u_{t-2} - \hat{u}_{t-2}^*) - 0.38(u_{t-3} - \hat{u}_{t-3}^*).
\end{aligned} \tag{11}$$

As expected, this policy is characterized by a stronger response to inflation and a much smaller response to the unemployment rate than the OC policy derived for $\lambda = 4$.

4.2 Central Bank Natural Rate Estimates

As seen in these equations, a key input into the setting of OC policies is the central bank’s estimate of the natural rate of unemployment. In deriving the OC policy, we assumed that the central bank knows the true structure of the economy, including the value of the natural rate of unemployment. In the model simulations, however, we also examine alternative assumptions regarding the central bank’s knowledge of the natural rate. One alternative is that the central bank’s estimates of the natural rate follow the historical pattern of the real-time estimates reported in Figure 2. We refer to this case as “historical natural rate misperceptions.” A second alternative is that the central bank estimates the natural rate based on the Kalman filter applied to the Phillips curve equation for inflation. We refer to this case as “Kalman filter estimates.” In each case, we assume that the true values of the natural rate of unemployment follow the current CBO estimates shown in Figure 2.

In the case of Kalman filter estimation of the natural rate of unemployment, we assume that the central bank uses an appropriate Kalman filter consistent with the data. In particular, the central bank’s real-time Kalman filter estimate of the natural rate of unemployment, \hat{u}_t^* , is given by

$$\hat{u}_t^* = a_1 \hat{u}_{t-1}^* + a_2 (u_t^* - e_{\pi,t} / \alpha_\pi), \quad (12)$$

where a_1 and a_2 are the Kalman gain parameters. The term within the parentheses is the current-period “shock” to inflation that incorporates the effects of the transitory inflation disturbance and the deviation of the natural rate of unemployment from its unconditional mean, scaled in units of the unemployment rate. Note that the central bank only observes this “surprise” and not the decomposition into its two components.

The optimal values of the gain parameters depend on the variances of the various shocks in the model. Based on a calibrated Kalman filter model, we assume that the central bank uses the following values: $a_1 = 0.982$ and $a_2 = 0.008$ (see Orphanides and Williams, 2009, for the derivation of these values). We assume that the central bank starts the simulation with the value of 4 percent, consistent with the evidence from real-time estimates reported earlier.

5 Expectations and Simulation Methods

We assume that private agents and, in some cases, the central bank form expectations using an estimated reduced-form forecasting model. Specifically, following Orphanides and Williams (2005b), we posit that private agents engage in perpetual learning, that is, they reestimate their forecasting model using a constant-gain least squares algorithm that weights recent data more heavily than past data. (See Sargent, 1999; Cogley and Sargent, 2001; and Evans and Honkapohja, 2001 for related treatments of learning.) This approach to modeling learning allows for the possible presence of time variation in the economy, including the natural rates of interest and unemployment. It also implies that agents’ estimates are always subject to sampling variation, that is, the estimates do not eventually converge to fixed values.

Private agents forecast inflation, the unemployment rate, and the short-term interest rate using an unrestricted vector autoregression (VAR) model containing three lags of these three variables and a constant. Note that we assume that private agents do not observe or estimate the natural rate of unemployment directly in forming expectations. The effects of time variation in the natural rate on forecasts are reflected in the forecasting VAR by the lags of the interest rate, inflation rate, and unemployment rate. As discussed in Orphanides and Williams (2008), this VAR forecasting model provides accurate forecasts in model simulations.

At the end of each period, agents update their estimates of their forecasting model using data through the current period. Let Y_t denote the 1×3 vector consisting of the inflation rate, the unemployment rate, and the interest rate, each measured at time t : $Y_t = (\pi_t, u_t, i_t)$. Further, let X_t be the 10×1 vector of regressors in the forecast model: $X_t = (1, \pi_{t-1}, u_{t-1}, i_{t-1}, \dots, \pi_{t-3}, u_{t-3}, i_{t-3})$. Also, let c_t be the 10×3 vector of coefficients of the forecasting model. Using data through period t , the coefficients of the forecasting model can be written in recursive form as follows:

$$c_t = c_{t-1} + \kappa R_t^{-1} X_t (Y_t - X_t' c_{t-1}), \quad (13)$$

$$R_t = R_{t-1} + \kappa (X_t X_t' - R_{t-1}), \quad (14)$$

where κ is the gain. Agents construct the multiperiod forecasts that appear in the inflation and unemployment equations in the model using the estimated VAR.

The matrix R_t may not be full rank at times. To circumvent this problem, in each period of the model simulations, we check the rank of R_t . If it is less than full rank, we assume that agents apply a standard Ridge regression (Hoerl and Kennard, 1970), where R_t is replaced by $R_t + 0.00001 * I(10)$ and $I(10)$ is a 10×10 identity matrix.

5.1 Calibrating the Learning Rate

A key parameter in the learning model is the private agent updating parameter, κ . Estimates of this parameter tend to be imprecise and sensitive to model specification, but tend

to lie between 0 and 0.04.¹⁵ We take 0.02 to be a reasonable benchmark value for κ .

6 Model Simulations

We examine a set of alternative counterfactual simulations to investigate the implications of alternative monetary policy frameworks on macroeconomic developments over the past 40 years. We start our simulations in the first quarter of 1966, which corresponds to what we and many observers consider to be the beginning of the Great Inflation in the United States.

6.1 Initial Conditions

The state variables of the model economy with learning are as follows: the current and lagged values of the inflation rate, the federal funds rate, the unemployment rate, the true natural rate of unemployment, the real-time estimate of the natural rate, the shocks to the structural equations, and the matrices C and R for the forecasting model. We initialize the C and R matrices using the values implied by the reduced-form solution of the model under rational expectations for the stipulated monetary policy rule. In so doing, we are implicitly assuming that the initial conditions for the agents' learning model are consistent with the policy rule in place. That is, we assume that at the start of the simulation expectations are well aligned with the monetary policy regime under consideration. Over time, expectations then evolve as described above. This assumption implies that the initial conditions for these state variables are different across the counterfactual simulations. As a result, the simulated paths will often differ significantly from the historical patterns.

To compute the history of equation residuals, we first compute the implied forecasts from our forecasting model of inflation, the unemployment rate, and the federal funds rate over the period 1966–2003. We treat the forecasts generated by the learning model as the true data for agents' expectations and then compute tracking residuals, that is, the values of the historical residuals for the equations for the unemployment rate, the inflation rate, and the natural rate of unemployment. Thus, given these residuals and the historical

¹⁵See Sheridan (2003), Orphanides and Williams (2005a), Branch and Evans (2006), and Milani (2007).

path for the nominal interest rate, the model's predictions will exactly match the historical paths for all endogenous variables. We then conduct counterfactual experiments in which we modify assumptions regarding monetary policy, but do not change the paths for the equation residuals for unemployment, inflation, and the natural rate of unemployment, which we assume are exogenous. Each counterfactual simulation starts in the first quarter of 1966 and ends in the fourth quarter of 2003.

7 Performance of Optimal Control Policies

If the Federal Reserve had accurate estimates of the natural rate of unemployment, then the OC policy derived assuming a moderately large weight on unemployment stabilization would have avoided the Great Inflation. Figure 3 shows the simulated paths for key variables assuming that the Fed follows the OC policy derived under $\lambda = 16$ and $\nu = 1$. The left column of the figure shows the outcomes assuming the Fed knew the true values of the natural rate of unemployment. Inflation would have been somewhat volatile during the 1970s, reflecting the effects of the large shocks hitting the economy at the time, but the deviation of the four-quarter inflation rate from target would not have exceeded three percentage points during that period. For comparison, the figure also shows the corresponding actual and survey data over the same period.

In the absence of natural rate misperceptions, inflation expectations would have remained reasonably contained during the 1970s. The middle left panel shows the simulated four-quarter-ahead inflation expectations under the OC policy. For comparison, the figure also shows the corresponding SPF inflation forecasts, which rose dramatically in the 1970s.¹⁶ As seen in Figure 3, the OC policy acts to raise the unemployment rate up to the natural rate by 1967 and holds the unemployment rate moderately above the natural rate through most of the 1970s, offsetting the inflationary effects of the supply shocks of that period. These policy actions help stabilize inflation and inflation expectations and avoid the need of a disinflationary policy at the end of the decade.

¹⁶For this figure and those that follow, the SPF three-quarter-ahead inflation forecast is substituted for the four-quarter-ahead forecast in the periods when the latter is missing from the survey.

This same OC policy performs dismally in the face of the historical natural rate misperceptions, leading to a Great Inflation outcome in the 1970s. The panels in the right column of Figure 3 show the outcomes when the Fed uses the historical real-time natural rate estimates. The simulated path of inflation during the 1970s is similar to that seen in the actual data. But, unlike the actual data, the high volatility of inflation continues through to the end of the sample. Owing to the low real-time estimate of the natural rate of unemployment, in this simulation the Fed does not act to raise unemployment during the latter part of the 1960s and early 1970s, as seen in the right panel of Figure 3. This extended period of easy policy leads to a sustained rise in inflation and inflation expectations. By the time the supply shocks of the 1970s strike, inflation expectations are completely untethered from the assumed 2 percent target.

Could the high inflation of the late 1970s have been mitigated by following an optimal control policy predicated on placing a much lower weight on unemployment stabilization? Orphanides and Williams (2008, 2009) show that “robust optimal control” policies derived assuming downward biased values of λ and ν can be robust to imperfect knowledge of the type studied in the present paper. We examine the effectiveness of such an approach by evaluating the performance of the OC policies derived assuming alternative weights on unemployment in the central bank loss of 4 and 0.

The OC policy derived assuming $\lambda = 4$ avoids the worst of the Great Inflation during the 1970s, even with natural rate misperceptions. The left column in Figure 4 shows the simulation results when the natural rate is known by the Fed. The results are similar to the case of the OC policy derived assuming $\lambda = 16$. In the case of natural rate misperceptions, monetary policy is too easy during the late 1960s and early 1970s and, as a result, inflation and inflation expectations trend upwards. But, the rise in inflation during this period is not as extreme as seen in the actual data.

In the absence of natural rate misperceptions, the OC policy that places no weight on unemployment stabilization performs very well during the 1970s (and indeed for the entire sample period). The left column panels in Figure 5 show the simulated paths of inflation,

inflation expectations, and unemployment under this policy in the case of no natural rate misperceptions. Under this policy, fluctuations in inflation and inflation expectations are far more muted than under the OC policy derived assuming $\lambda = 4$ or 16. This greater stabilization of inflation comes at the cost of only somewhat greater variability in the unemployment rate.

With the historical natural rate misperceptions, the OC policy derived with a zero weight placed on the stabilization of unemployment in the loss function avoids the Great Inflation, but still allows some inflation volatility to develop. The panels in the right column of Figure 5 show the simulated paths of inflation, inflation expectations, and unemployment under this policy in the case of historical natural rate misperceptions. Given the incorrect low estimate of the natural rate of unemployment at the start of the simulation, this policy keeps unemployment too low for too long. This mistake allows inflation to rise and inflation expectations to become untethered. Note that the policy error does not stem from a concern for stabilizing unemployment for its own good, but instead reflects the importance of deviations of unemployment from its natural rate for the future path of inflation. With inflation reaching 6 percent by mid-decade, policy acts aggressively to bring inflation back down to target by the end of the 1970s and a major stagflation is averted.

Table 1 quantifies the performance of the various OC policies during the late 1960s and 1970s. The first three columns report the root mean squared differences of the inflation rate from its target value of 2 percent, the unemployment rate from its natural rate, and the first difference of the short-term interest rate, respectively. The final three columns report the implied values of the central bank loss for three different values of λ , the weight placed on the squared deviations of the unemployment rate from the natural rate. Table 2 reports the same set of statistics for the full sample of 1966-2003.

The first row of Table 1 reports key summary statistics for the actual data over the period of the Great Inflation from 1966 to 1979. Corresponding results for the full sample are reported in Table 2. Rows 2-4 of each table report the simulated outcomes under OC policies in the case of no natural rate misperceptions. All three of these policies yield fluctuations

in inflation and the unemployment rate over 1966-1979 that are broadly comparable to those experienced during the period of the Great Moderation and nothing like the horrible performance that actually occurred during the Great Inflation.

The magnitude of simulated inflation fluctuations under the OC policies with historical natural rate misperceptions depends crucially on the weight placed on unemployment stabilization in the objective function. Rows 5-7 of Tables 1 and 2 report the results for OC policies with historical natural rate misperceptions. The policy designed assuming no weight on unemployment stabilization performs the best of the three, even if the true value of λ is 16. The OC policy designed for $\lambda = 16$ yields much larger central bank losses over this period.

Interestingly, given the presence of natural rate misperceptions, the OC policies derived with a nonnegligible weight on stabilizing unemployment yield much greater inflation variability in the final 20 years of our sample than is seen in the data. Although these policies describe the Great Inflation period reasonably well, they do not match the experience since the disinflation of the early 1980s. In contrast, the OC policy derived assuming no weight on unemployment stabilization does a much better job of describing inflation during the latter part of the sample.

The performance of OC policies is significantly improved if the central bank uses an appropriate Kalman filter to estimate the natural rate of unemployment, rather than using the historical estimates. Rows 8-10 of Tables 1 and 2 report the summary statistics in the case of Kalman filter estimation of natural rates. The simulated outcomes lie between those of the two cases previously considered of no misperceptions and historical misperceptions. As in the case of historical misperceptions, the OC policy designed for no weight on unemployment stabilization performs the best. We also experimented with alternative values of the Kalman gain. A higher gain applied to the inflation surprise, a_2 , implies a quicker adjustment of the central bank's estimate of the natural rate from 4 percent toward its true value of roughly 6 percent early in the sample. As a result, the OC policies using higher gains perform somewhat better than the results reported in Tables 1 and 2. Conversely, a

lower value of a_2 than our benchmark value implies worse performance during this period than reported.

In summary, this analysis suggests that a benevolent policymaker striving to achieve full employment and price stability using modern optimal control methods could well have made policy errors during the 1960s and 1970s that would have led to unmoored inflation expectations and highly volatile inflation. The magnitude of these problems depends on the weight that the policymaker places on the stabilization of real activity. Only if that weight is relatively small or if the policymaker has excellent information about the economy does the optimal control policy perform reasonably well.

8 Performance of a Simple Policy Rule

We now examine the performance of an alternative monetary policy rule that has proven to be robust to various forms of model uncertainty in other contexts (see Tetlow, 2006, and Orphanides and Williams, 2008, 2009). The rule was proposed by Orphanides and Williams (2007) and takes the form:

$$i_t = i_{t-1} + \theta_\pi(\bar{\pi}_{t+3}^e - \pi^*) + \theta_{\Delta u}(u_{t-1} - u_{t-2}). \quad (15)$$

A key feature of this policy is the absence of any measures of natural rates in the determination of policy. This policy rule is related to the elastic price standard proposed by Hall (1984), whereby the central bank aims to maintain a stipulated relationship between the forecast of the unemployment rate and the price level. It is also closely related to the first difference of a modified Taylor-type policy rule in which the forecast of the price level is substituted for the forecast of the inflation rate.

We choose the parameters of these simple rules to minimize the central bank loss for $\lambda = 4$ and $\nu = 1$, under the assumptions of rational expectations and constant natural rates.¹⁷ The resulting optimized simple rule is given by:

$$i_t = i_{t-1} + 1.74 (\bar{\pi}_{t+3}^e - \pi^*) - 1.19 (u_{t-1} - u_{t-2}). \quad (16)$$

¹⁷If we allow for time-varying natural rates that are *known by all agents*, the optimized parameters of this simple rule under rational expectations are nearly unchanged. The relative performance of this policy is also unaffected.

This is the same rule as analyzed in Orphanides and Williams (2008, 2009), where it was shown to perform well under imperfect knowledge.

According to the model simulation, if the Fed had followed this simple rule over the past 40 years, inflation would have been relatively stable and the Great Inflation would never have occurred. Figure 6 compares the simulated paths of inflation, inflation expectations, the real interest rate, and the unemployment rate under this simple robust policy rule to the actual data. Because this simple policy rule does not respond to the natural rate of unemployment, the simulations are invariant to the assumed path of central bank natural rate estimates. Inflation does fluctuate a bit during the 1970s, reflecting the large shocks of that period, but the deviations from target are short-lived. The simulated path for inflation is very stable since the mid-1980s.

This simple policy rule is extremely effective at keeping inflation expectations well anchored. Although the inflation rate itself fluctuates under the simple policy rule, inflation is expected to return to near its target rate of 2 percent within one year. As discussed in Orphanides and Williams (2008), the anchoring of inflation expectations is key to the success of this rule in stabilizing inflation and unemployment. A striking result is that this simple rule does better at stabilizing inflation and inflation expectations than the OC policy derived for $\lambda = 0$. The anchoring of inflation expectations implies that the gap between the unemployment rate and the natural rate is considerably smaller throughout the sample than in the actual data.

Interestingly, the simulated behavior of inflation, inflation expectations, and unemployment over the latter part of our sample is very close to that of the actual data. This finding suggests that the actual policy framework during this period may not have been very different from that prescribed by this robust simple rule.

The simple robust policy rule performs as well as or better than the best OC policy where the central bank uses the Kalman filter to estimate the natural rate of unemployment. The final rows of Tables 1 and 2 report the summary statistics for the robust policy rule. This holds for any of the three values of the central bank loss considered here.

The anchoring of long-run inflation expectations under the simple robust policy rule is illustrated by the small variance in the simulated path for inflation expectations over the next 10 years. The thin solid line in Figure 7 shows the simulated path for 10-year inflation expectations when monetary policy follows the simple robust policy rule. This line fluctuates very little over the entire sample. By comparison, surveys of 10-year consumer price index inflation expectations (not shown) reached around 8 percent at the start of the 1980s, and then gradually fell to around 2-1/2 percent in the late 1990s. Since that time, these long-run inflation expectations have fluctuated very little.

In contrast, the OC policy derived assuming $\lambda = 16$ does a poor job of anchoring long-run inflation expectations. The thick solid line in the chart shows the path of 10-year inflation expectations under the OC policy optimized for $\lambda = 16$ and assuming historical natural rate misperceptions. This line fluctuates considerably over the sample, reflecting the relatively poor anchoring of inflation expectations under this regime. The dashed line shows the corresponding outcomes under the OC policy optimized for $\lambda = 16$ and assuming no natural rate misperceptions. Not surprisingly, long-run inflation expectations are generally reasonably well anchored in this case. However, even in this case, there are extended episodes during the 1970s and early 2000s when long-run inflation expectations fluctuate significantly.

9 Conclusion

Our narrative account of the Great Inflation squarely attributes the policy failures on mistakes consistent with what was viewed by many to be the latest advances in macroeconomics as embodied in the New Economics. The fine-tuning approach to monetary policy, with its emphasis on stabilizing the level of real activity, might have succeeded if policymakers had possessed accurate real-time assessments of the natural rate of unemployment. In the event, they did not and they failed to account for their imperfect information regarding the economy's potential and the effects of these misperceptions on the evolution of inflation expectations and inflation. Price and economic stability were only restored after the Federal

Reserve, under Chairman Volcker, refocused policy on establishing and maintaining price stability.

This paper shows that, even if the Federal Reserve had applied modern optimal control techniques in conducting monetary policy, it would not have done much better at stabilizing inflation during the 1970s owing to the presence of realistic informational imperfections such as misperceptions of the natural rate of unemployment. Such optimal control policies would likely have failed to keep inflation expectations well anchored, resulting in highly volatile inflation. An optimal control policy would have succeeded only if the weight placed on stabilizing the real economy were relatively modest—with the best results achieved if virtually all the weight were placed on stabilizing prices. Finally, we show that a strategy of following a simple first-difference policy rule would have been more successful than optimal control policies in the presence of realistic informational imperfections. In addition, this policy rule yields simulated outcomes close to the realized behavior of the economy during the Great Moderation starting in the mid-1980s, suggesting that the actual practice of monetary policy during this period changed in ways that incorporated the key properties of the robust monetary policy rule.

References

- Board of Governors of the Federal Reserve System (1965), "Federal Reserve Policy Actions", *Federal Reserve Bulletin*, December, 1667-1668.
- Board of Governors of the Federal Reserve System (1970), "Minutes of Action for the Meeting of Federal Open Market Committee," August 18, 1970.
- Board of Governors of the Federal Reserve System (1975), "FOMC Memorandum of Discussion," May 1975.
- Branch, William A. and George W. Evans (2006), "A Simple Recursive Forecasting Model," *Economics Letters* 91, 158-166.
- Burns, Arthur (1979), *The Anguish of Central Banking* The 1979 Per Jacobsson Lecture, Belgrade, September 30.
- Cogley, Timothy and Sargent, Thomas (2001), "Evolving Post-World War II U.S. Inflation Dynamics," In: Bernanke, B.S., Rogoff, K.S. (Eds.), *NBER Macroeconomics Annual 2001*. Cambridge, MA: The MIT Press, 331-373.
- Congressional Budget Office (2001), "CBO's Method for Estimating Potential Output: An Update," Washington, DC: Government Printing Office (August).
- Council of Economic Advisers (1962), *Economic Report of the President*, U.S. Government Printing Office, Washington, DC.
- Council of Economic Advisers (1966), *Economic Report of the President*, U.S. Government Printing Office, Washington, DC.
- Croushore, Dean (1993), "Introducing: The Survey of Professional Forecasters," *Federal Reserve Bank of Philadelphia Business Review*, November/December, 3-13.
- Croushore, Dean and Tom Stark (2001), "A Real-Time Data Set for Macroeconomists," *Journal of Econometrics* 105, November, 111-130.
- Evans, George and Honkapohja, Seppo (2001), *Learning and Expectations in Macroeconomics*, Princeton: Princeton University Press.
- Giannoni, Marc P. and Michael Woodford (2005), "Optimal Inflation Targeting Rules," In: Bernanke, B.S., Woodford, M. (Eds.), *The Inflation Targeting Debate*, Chicago: University of Chicago Press, 93-162.
- Goodfriend, Marvin and Robert G. King (2005), "The Incredible Volcker Disinflation," *Journal of Monetary Economics*, 52(5), 981-1015.
- Hall, Robert E. (1984), "Monetary strategy with an elastic price standard," *Price Stability and Public Policy: A Symposium Sponsored by the Federal Reserve Bank of Kansas City*, Kansas City: Federal Reserve Bank of Kansas City, 137-159.
- Heller, Walter W. (1966), *New Dimensions of Political Economy*, Cambridge, MA: Harvard University.
- Hetzl, Robert (1998), "Arthur Burns and Inflation," *Federal Reserve Bank of Richmond, Economic Quarterly*, 84, Winter, 21-44.
- Hetzl, Robert (2008a), *The Monetary Policy of the Federal Reserve: A History*, Cambridge: Cambridge University Press.

- Hetzl, Robert (2008b), "What is the Monetary Standard, Or, How Did the Volcker-Greenspan Fed Tame Inflation," *Federal Reserve Bank of Richmond Economic Quarterly* 94, Spring, 147-171.
- Hoerl, A.E. and R.W. Kennard (1970), "Ridge regression: Biased Estimation of Nonorthogonal Problems," *Tecnometrics*, 12, 69–82.
- Kalchbrenner, J.H. and Peter. A. Tinsley (1976), "On the Use of Feedback Control in the Design of Aggregate Monetary Policy," *American Economic Review*, 66(2), May, 349-355
- Levin, Andrew T., and John B. Taylor (2009), "Falling Behind the Curve: A Positive Analysis of Stop-Start Monetary Policies and the Great Inflation," Stanford University, December.
- Levin, Andrew T. and John C. Williams (2003), Robust Monetary Policy with Competing Reference Models. *Journal of Monetary Economics*, 50, 945–975.
- Lindsey, David E., Athanasios Orphanides and Robert H. Rasche (2005), "The Reform of 1979: How It Happened and Why," In *Reflections on Monetary Policy 25 Years After October 1979*, *Federal Reserve Bank of St. Louis Review*, 87 (March/April): 187-235.
- Maisel, Sherman J. (1973), *Managing the Dollar*, New York: Norton.
- Mayer, Thomas (1999), *Monetary Policy and the Great Inflation in the United States: The Federal Reserve and the Failure of Macroeconomic Policy, 1965-1979.*, Cheltenham: Edward Elgar.
- Martin, William M. (1957), "Statement" before the Committee of Finance, United States Senate, August 13.
- Martin, William M. (1965), "Remarks before the 59th annual meeting of the Life Insurance Association of America," New York City, December 8.
- Meltzer, Allan H. (2003), *A History of the Federal Reserve: Volume 1*, University of Chicago Press, Chicago.
- Milani, Fabio (2007), "Expectations, Learning, and Macroeconomic Persistence," *Journal of Monetary Economics*, 54, 2065–2082.
- Modigliani, Franco and Lucas Papademos (1975), "Targets for Monetary Policy in the Coming Year," *Brookings Papers for Economic Activity* 1, 141-63.
- Okun, Arthur (1962), "Potential Output: Its Measurement and Significance," in *American Statistical Association 1962 Proceedings of the Business and Economic Section*, American Statistical Association, Washington DC
- Okun, Arthur (1970), *The Political Economic of Prosperity*, Brookings Institution, Washington DC.
- Orphanides, Athanasios (2002), "Monetary Policy Rules and the Great Inflation," *American Economic Review*, 92(2), May, 115–120.
- Orphanides, Athanasios (2003), "The Quest for Prosperity without Inflation." *Journal of Monetary Economics*, 50(3), 633–663.
- Orphanides, Athanasios and John C. Williams (2002), "Robust Monetary Policy Rules with Unknown Natural Rates", *Brookings Papers on Economic Activity*, 2:2002, 63–118.

- Orphanides, Athanasios and John C. Williams (2005a), "The Decline of Activist Stabilization Policy: Natural Rate Misperceptions, Learning, and Expectations." *Journal of Economic Dynamics and Control*, 29(11), November, 1927–1950.
- Orphanides, Athanasios and John C. Williams (2005b), "Imperfect Knowledge, Inflation Expectations and Monetary Policy," in *The Inflation Targeting Debate*, Ben Bernanke and Michael Woodford (eds.), Chicago: University of Chicago Press, 201–234.
- Orphanides, Athanasios and John C. Williams (2007), "Inflation Targeting Under Imperfect Knowledge," in *Monetary Policy Under Inflation Targeting*, Frederic Mishkin and Klaus Schmidt-Hebbel (eds.), Santiago: Central Bank of Chile, 77–123
- Orphanides, Athanasios and John C. Williams (2008), "Learning, Expectations Formation, and the Pitfalls of Optimal Control Monetary Policy," in *Journal of Monetary Economics*, 55, October, S80–S96.
- Orphanides, Athanasios and John C. Williams (2009), "Imperfect Knowledge and the Pitfalls of Optimal Control Monetary Policy," in Carl Walsh and Klaus Schmidt-Hebbel (ed.), *Central Banking, Analysis and Economic Policies: Monetary Policy Under Uncertainty and Learning*, Santiago, Chile: Central Bank of Chile, 2009, 115–144.
- Sargent, Thomas J. (1999), *The Conquest of American Inflation*, Princeton: Princeton University Press.
- Sargent, Thomas J. (2007), "Evolution and Intelligent Design," mimeo, New York University, September.
- Sheridan, Niamh (2003), "Forming Inflation Expectations," Johns Hopkins University, mimeo, April.
- Stein, Herbert (1996), "A successful Accident: Recollections and Speculations about the CEA," *Journal of Economic Perspectives*, 10(3), 3–21, Summer.
- Svensson, Lars E. O. and Robert Tetlow (2005), "Optimum Policy Projections," *International Journal of Central Banking*, 1, 177–207.
- Svensson, Lars E. O. and Michael Woodford (2003), "Optimal Indicators for Monetary Policy," *Journal of Monetary Economics*, 46, 229–256.
- Tetlow, Robert J. (2006), "Real-time Model Uncertainty in the United States: 'Robust' policies put to the test," mimeo, Federal Reserve Board, May 22.
- Time Magazine (1965), "We Are All Keynesian Now," December 31.
- United States Congress (1966), *Recent Federal Reserve Action and Economic Policy Coordination*, Hearings before the Joint Economic Committee, Part 1, December 13 and 14, 1965, U.S. Government Printing Office, Washington, DC.
- Volcker, Paul A. (1980), "Statement," before the Committee on Banking, Finance and Urban Affairs, House of Representatives, February 19.
- Wallich, Henry C. (1976), "Discussion," *American Economic Review*, 66(2), May, 356–359.
- Woodford, Michael (2003), *Interest and Prices: Foundations of a Theory of Monetary Policy*, Princeton: Princeton University Press.

Table 1: Loss Comparison (1966-1979)

κ	RMSD			Loss \mathcal{L}		
	$\pi - 2$	$u - u^*$	Δi	$\lambda = 0$	$\lambda = 4$	$\lambda = 16$
Historical data	4.2	1.5	0.7	18.2	27.8	56.5
<i>No misperceptions</i>						
OC ($\lambda = 0$)	1.4	1.0	0.8	2.7	6.5	17.9
OC ($\lambda = 4$)	1.4	0.8	1.0	3.1	5.6	13.0
OC ($\lambda = 16$)	1.5	0.7	1.5	4.5	6.3	11.4
<i>Historical misperceptions</i>						
OC ($\lambda = 0$)	2.3	1.0	0.6	5.6	9.3	20.3
OC ($\lambda = 4$)	3.2	1.0	0.9	10.9	14.9	27.1
OC ($\lambda = 16$)	4.7	1.1	1.3	24.0	28.9	43.4
<i>Kalman filter</i>						
OC ($\lambda = 0$)	2.0	0.9	0.7	4.4	8.0	18.6
OC ($\lambda = 4$)	2.6	0.9	0.9	7.6	11.2	22.9
OC ($\lambda = 16$)	3.7	1.0	1.3	15.3	19.3	31.2
Robust policy rule	1.5	0.9	1.4	4.3	7.6	17.4

Table 2: Loss Comparison (1966-2003)

κ	RMSD			Loss \mathcal{L}		
	$\pi - 2$	$u - u^*$	Δi	$\lambda = 0$	$\lambda = 4$	$\lambda = 16$
Historical data	3.3	1.4	1.0	11.6	19.6	43.8
<i>No misperceptions</i>						
OC ($\lambda = 0$)	1.2	0.7	0.6	2.0	4.0	10.0
OC ($\lambda = 4$)	1.3	0.6	0.9	2.5	3.8	7.7
OC ($\lambda = 16$)	1.5	0.5	1.2	3.7	4.6	7.3
<i>Historical misperceptions</i>						
OC ($\lambda = 0$)	1.7	0.8	0.6	3.4	5.7	12.9
OC ($\lambda = 4$)	2.3	0.8	0.8	6.0	8.4	15.5
OC ($\lambda = 16$)	3.3	0.8	1.2	12.4	14.9	22.5
<i>Kalman filter</i>						
OC ($\lambda = 0$)	1.6	0.8	0.6	2.9	5.3	12.6
OC ($\lambda = 4$)	2.0	0.8	0.8	4.8	7.0	13.9
OC ($\lambda = 16$)	2.7	0.8	1.2	8.8	11.1	18.0
Robust policy rule	1.3	0.8	1.0	2.7	5.2	12.6

Figure 1: The Great Inflation

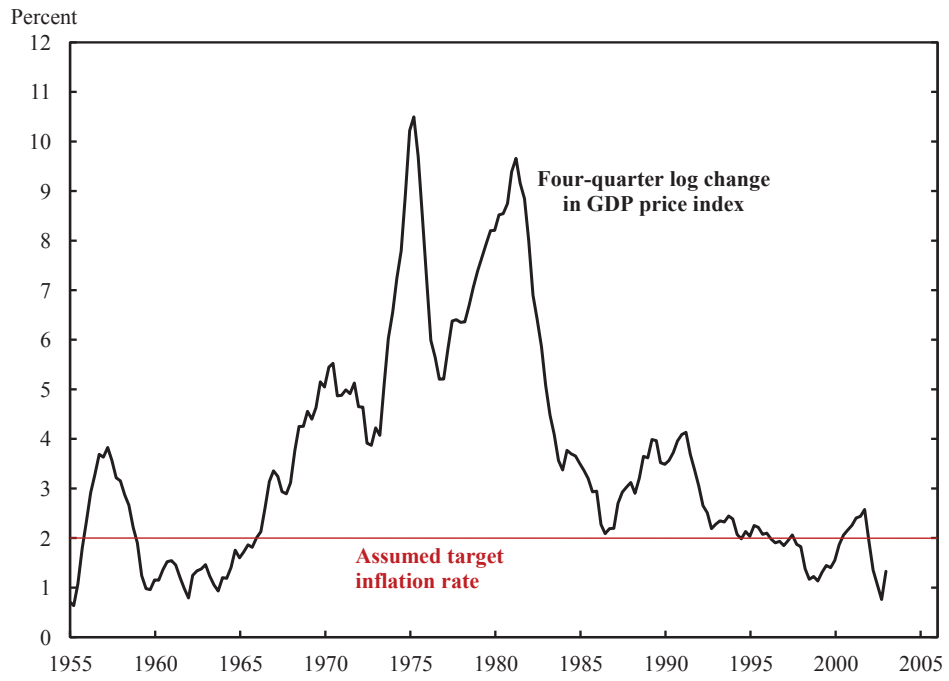


Figure 2: Estimates of the Natural Rate of Unemployment

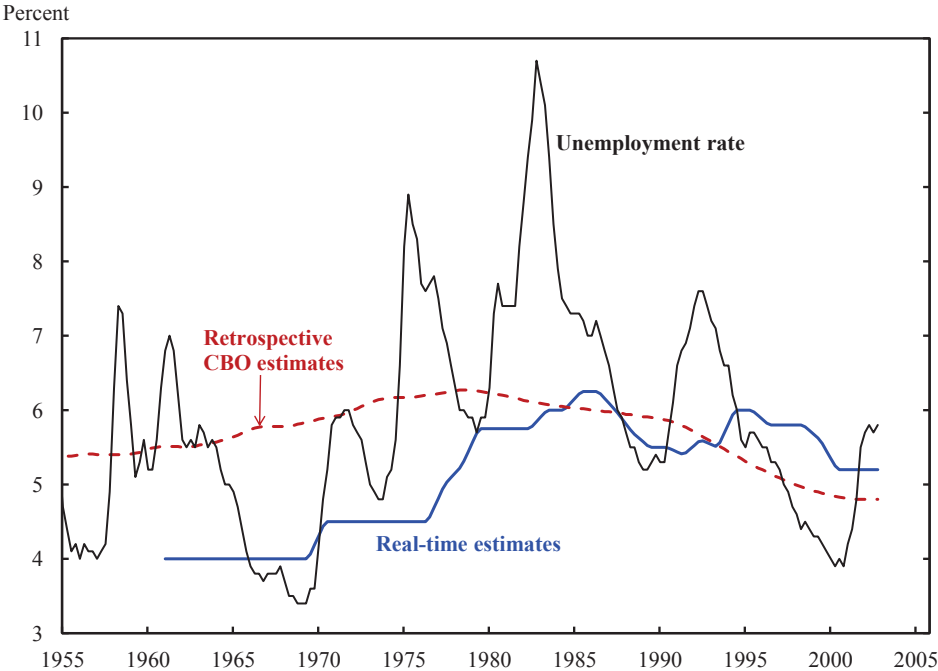


Figure 3: Counterfactual Simulations under OC Policy with $\lambda = 16$

Absent Misperceptions

With Historical Misperceptions

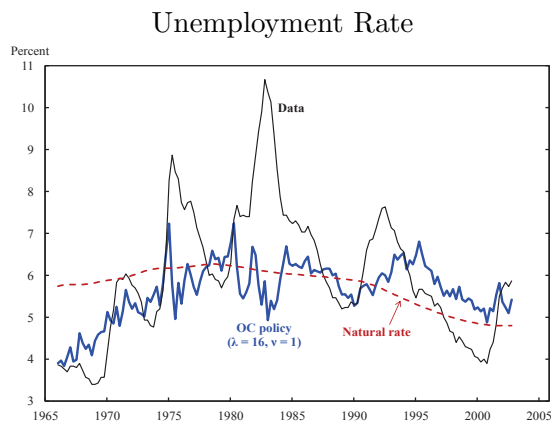
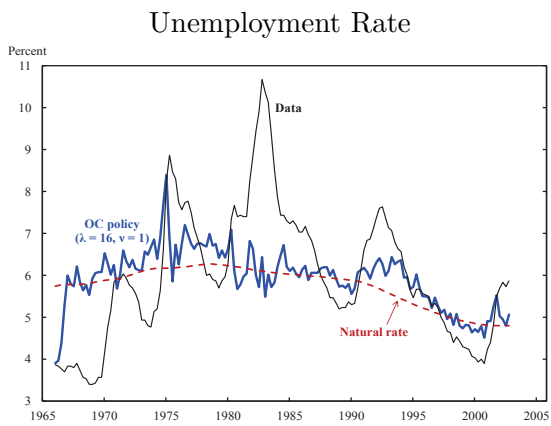
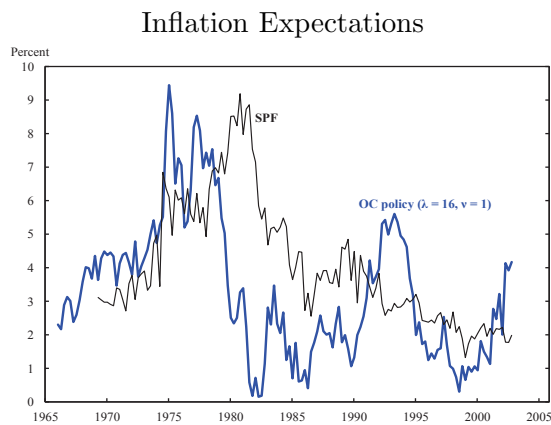
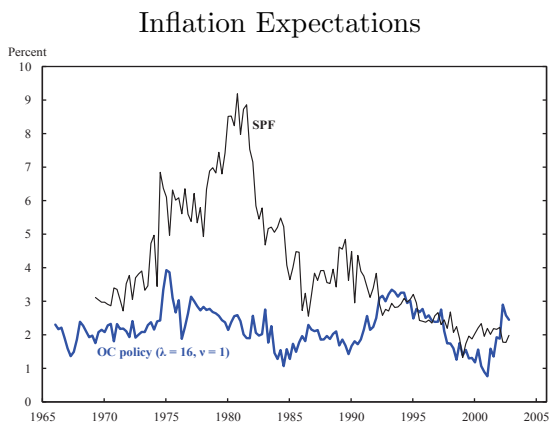
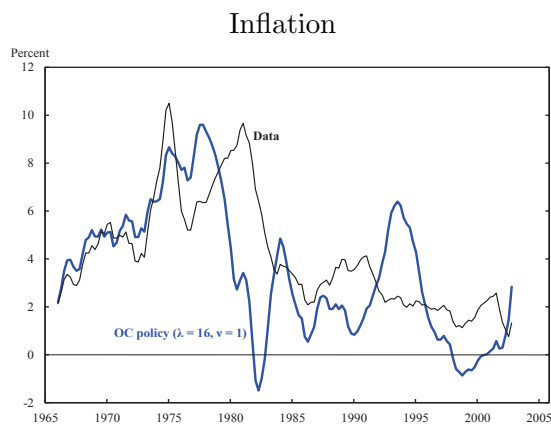
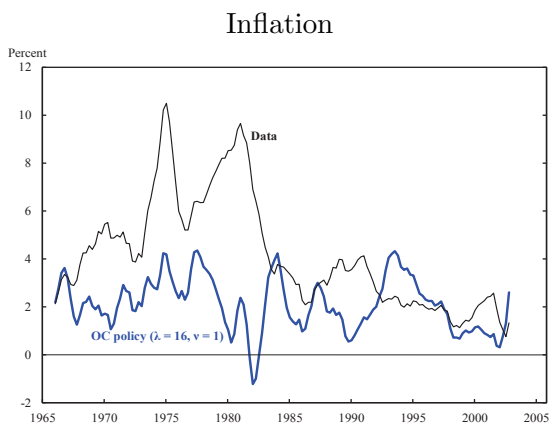


Figure 4: Counterfactual Simulations under OC Policy with $\lambda = 4$

Absent Misperceptions

With Historical Misperceptions

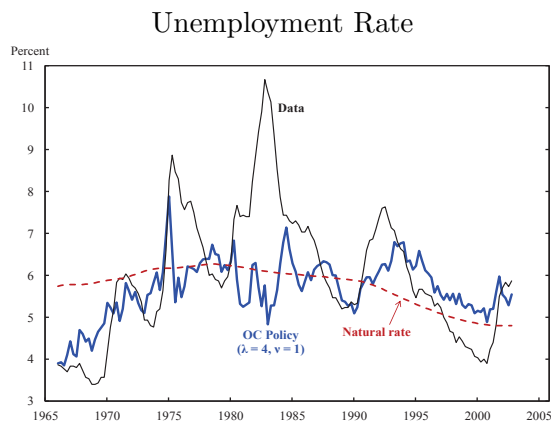
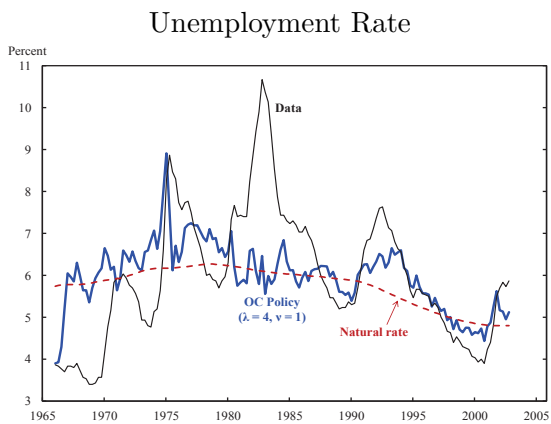
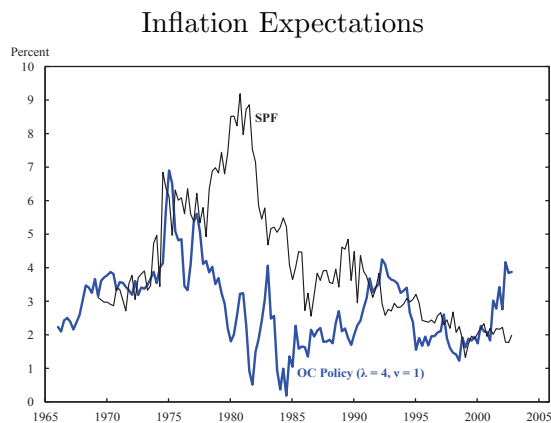
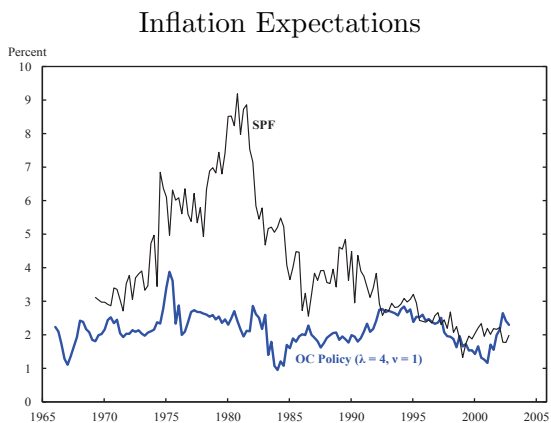
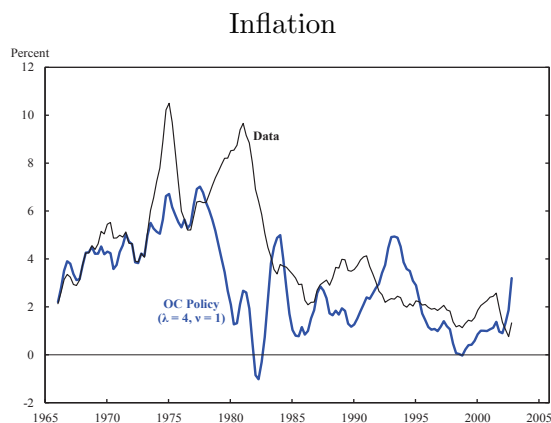
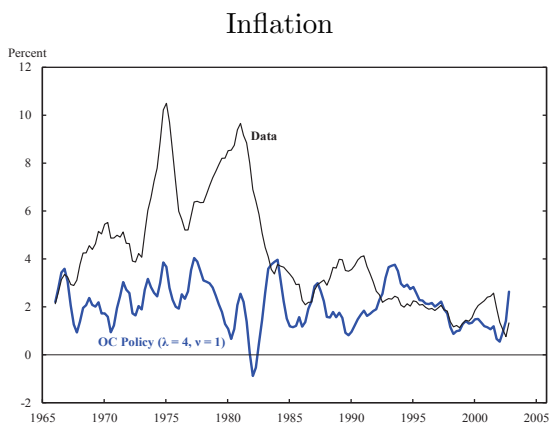


Figure 5: Counterfactual Simulations under OC Policy with $\lambda = 0$

Absent Misperceptions

With Historical Misperceptions

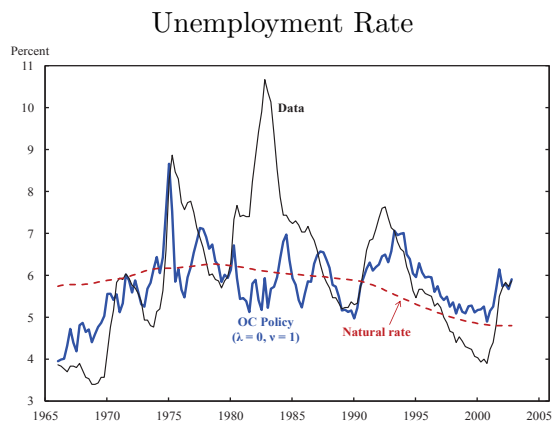
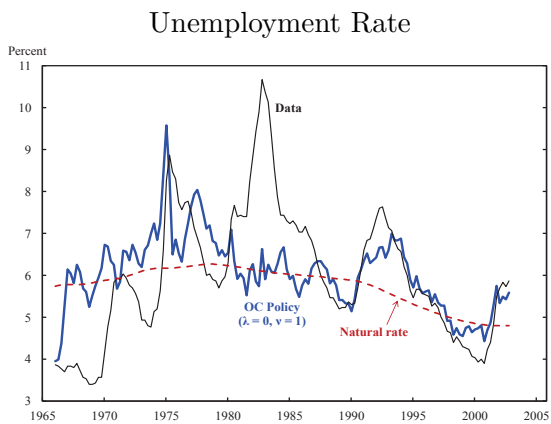
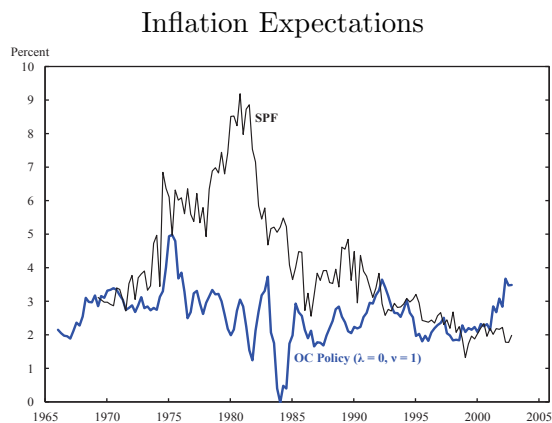
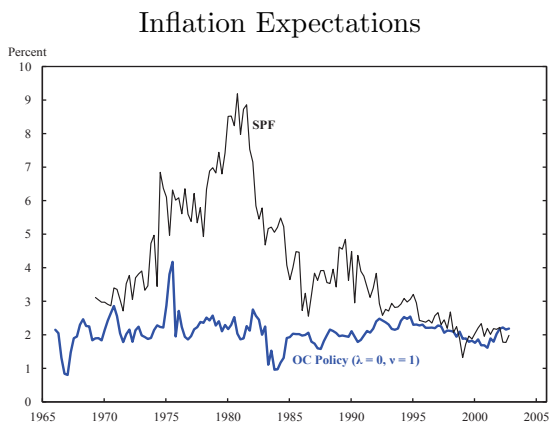
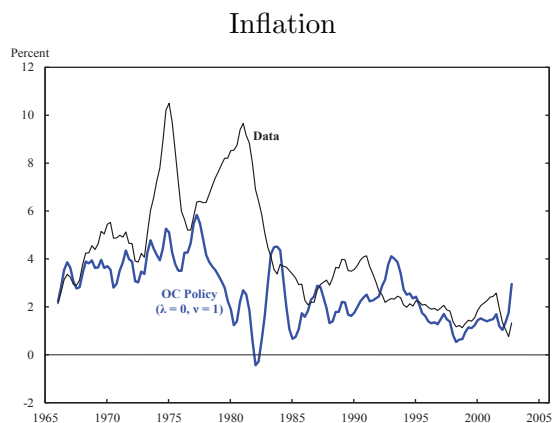
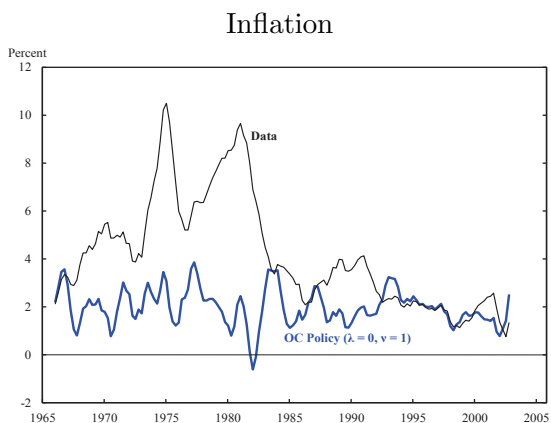
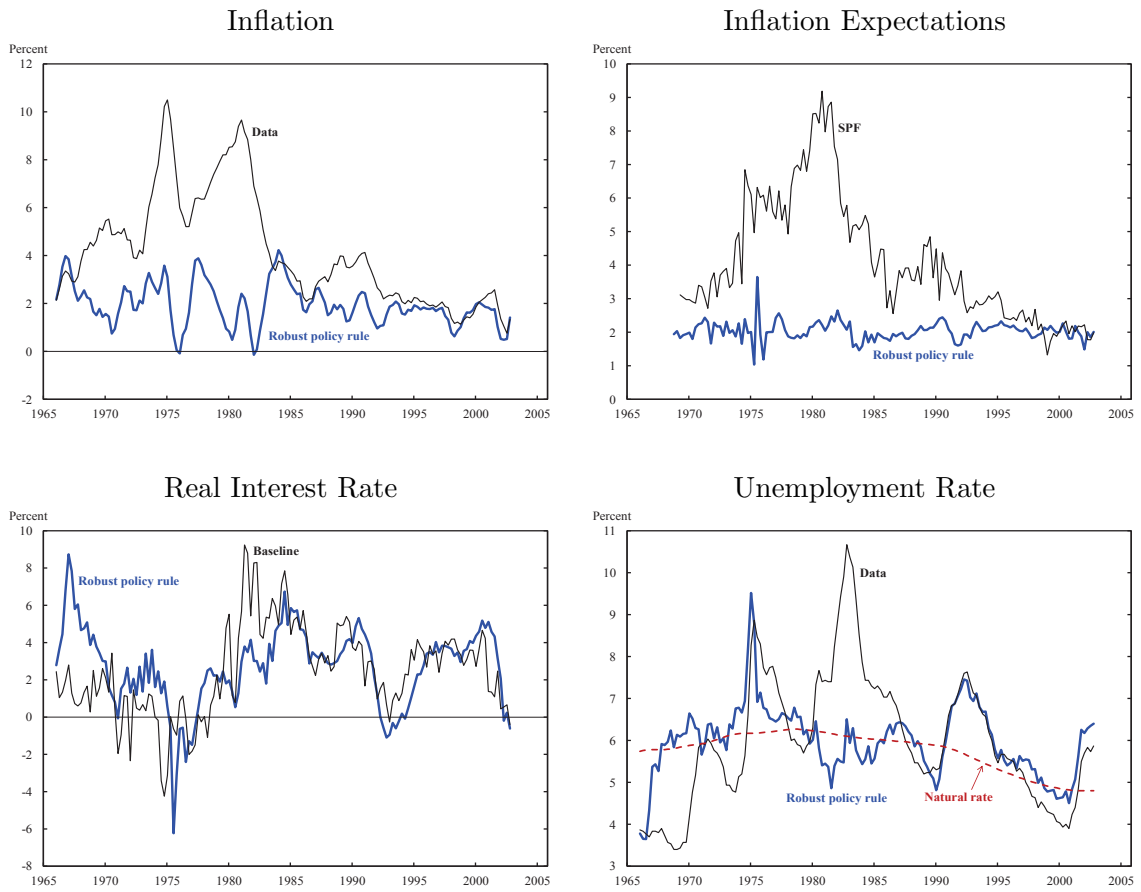


Figure 6: Counterfactual Simulations under Robust Simple Policy Rule ($\lambda = 4$)



$$i_t = i_{t-1} + 1.74 (\bar{\pi}_{t+3}^e - \pi^*) - 1.19 (u_{t-1} - u_{t-2}).$$

Figure 7: Simulations of 10-Year Inflation Expectations

