

DISCUSSION PAPER SERIES

DP16333

**COVID-19 and Income Inequality:
Evidence from Monthly Population
Registers**

Daniel Waldenström and Nikolay Angelov

PUBLIC ECONOMICS

CEPR

COVID-19 and Income Inequality: Evidence from Monthly Population Registers

Daniel Waldenström and Nikolay Angelov

Discussion Paper DP16333

Published 06 July 2021

Submitted 01 July 2021

Centre for Economic Policy Research
33 Great Sutton Street, London EC1V 0DX, UK
Tel: +44 (0)20 7183 8801
www.cepr.org

This Discussion Paper is issued under the auspices of the Centre's research programmes:

- Public Economics

Any opinions expressed here are those of the author(s) and not those of the Centre for Economic Policy Research. Research disseminated by CEPR may include views on policy, but the Centre itself takes no institutional policy positions.

The Centre for Economic Policy Research was established in 1983 as an educational charity, to promote independent analysis and public discussion of open economies and the relations among them. It is pluralist and non-partisan, bringing economic research to bear on the analysis of medium- and long-run policy questions.

These Discussion Papers often represent preliminary or incomplete work, circulated to encourage discussion and comment. Citation and use of such a paper should take account of its provisional character.

Copyright: Daniel Waldenström and Nikolay Angelov

COVID-19 and Income Inequality: Evidence from Monthly Population Registers

Abstract

We measure the distributional impact of the COVID-19 pandemic using newly released population register data in Sweden. Monthly earnings inequality increased during the pandemic, and the key driver is income losses among low-paid individuals while middle- and high-income earners were almost unaffected. The pandemic had a larger negative impact on private-sector workers and on women. Using data on individual take-up of government COVID-19 support, we show that policy significantly dampened the inequality increase, but did not fully offset it. Annual total market income inequality, which also includes capital income and taxable transfers, shows similar patterns of increasing inequality during the pandemic.

JEL Classification: D31, H12, H24, J22

Keywords: Pandemic, Income inequality, Earnings, Government Policy

Daniel Waldenström - daniel.waldenstrom@ifn.se
Research Institute of Industrial Economics (IFN) and CEPR

Nikolay Angelov - nikolay.angelov@skatteverket.se
Swedish Tax Agency

COVID-19 and Income Inequality: Evidence from Monthly Population Registers*

Nikolay Angelov[†] Daniel Waldenström[‡]

July 1, 2021

Abstract

We measure the distributional impact of the COVID-19 pandemic using newly released population register data in Sweden. Monthly earnings inequality increased during the pandemic, and the key driver is income losses among low-paid individuals while middle- and high-income earners were almost unaffected. The pandemic had a larger negative impact on private-sector workers and on women. Using data on individual take-up of government COVID-19 support, we show that policy significantly dampened the inequality increase, but did not fully offset it. Annual total market income inequality, which also includes capital income and taxable transfers, shows similar patterns of increasing inequality during the pandemic.

Keywords: Pandemic, Income inequality, Earnings, Government policy

JEL codes: D31, H12, H24, J22

*We are grateful for comments from Cecilia Öst. Financial support from the Swedish Research Council is gratefully acknowledged.

[†]The Swedish Tax Agency and Uppsala Center for Fiscal Studies (UCFS)
E-mail: nikolay.angelov@skatteverket.se

[‡]Research Institute for Industrial Economics (IFN), Stockholm; CEPR, CESifo, IZA, WIL. E-mail: daniel.waldenstrom@ifn.se

1 Introduction

The COVID-19 pandemic has profoundly affected the economy in most countries, and governments have launched extensive policies in response to its consequences. However, little is still known about how these effects have been distributed in the population, if low-income earners have suffered more than middle- or high-income earners, and if government policies have managed to mitigate the effects. Some early research studies address these issues by simulating outcomes or rapidly collecting household surveys to shed light on income inequality effects of the pandemic. Results are still preliminary, but they seem to find that inequality has in fact decreased during the pandemic in most countries, primarily as a result of massive government transfers without which inequality would probably have increased due to job losses among low-paid workers.¹

In this paper, we exploit administrative tax and income registers at the Swedish Tax Agency to estimate how income inequality in Sweden is affected by the COVID-19 pandemic and how the government's COVID-19 policies have influenced the outcomes. A new monthly payroll register covers monthly wages and salaries of all working individuals since 2019, virtually offering a real-time source for measuring earnings and earnings inequality (our latest observation is March 2021). We also use the full-population tax-return register, showing annual incomes filed in May-June after the income year. This register offers less precision with respect to analyzing the pandemic, which broke out a few months into 2020, but it comprises the entire population and also incomes from self-employment, capital, taxable transfers and all personal taxes paid.

We identify the impact of the COVID-19 pandemic using two complementary approaches. First, a descriptive before-after analysis, comparing incomes and inequality levels across the same calendar months before and after the pandemic's outbreak. Second, we use difference-in-differences regressions and unconditional quantile regressions (Firpo et al. 2008), both based on within-year and across-year variation, to measure the effect of the pandemic on earnings across the distribution and across background variables such as private or public sector employment and gender.

The paper's final analysis examines the distributional impact of the government's COVID-19 policies during 2020. We access individual- and firm-level take-ups of the two largest government support programs, Short-Time Work Allowance ("korttidsstöd") and Reorientation Support ("omställningsstöd"). We measure their distributional impact by subtracting the support payments from workers' actual earnings and then recalculate inequality outcomes. While this exercise is static, and cannot capture all behavioral responses, it spans a relatively short time period (at most nine months during March-December 2020) which should limit general equilibrium effects.

¹See, for example, Blundell et al. (2020), O'Donoghue et al. (2020), Almeida et al. (2021), Clark et al. (2021), and Stantcheva (2021).

Few socioeconomic variables are available in the tax registers. We observe data on age, gender, region and employer characteristics (sector, geographic location), but not household links, education or country of birth. We observe incomes from labor, self-employment and capital, taxable transfers (unemployment and sickness insurance) and all taxes paid, but not untaxed transfers such as child or housing allowances or social assistance to the poorest. This means that our inequality measures will not be based on disposable income or adjustments for household size as standard inequality measures. Using individuals instead of equivalized households will unambiguously increase the level of inequality, but whether also inequality trends are affected is less clear.²

Our main finding is that income inequality has increased during the COVID-19 pandemic in Sweden. The increase is moderate when looking at monthly pre-tax earnings, at roughly 2.5 percent of the Gini-coefficient (one Gini point). When we instead account for market income inequality effects, that is, using yearly data which includes capital income and income from own businesses (sole proprietorships), we find a larger effect: the Gini-coefficient increased with 4.6% and 3.9% pre- and post-tax, respectively. Notice that these incomes are all post-government pandemic support policies (which we analyze explicitly below).

A recurrent result, irrespective of data source or outcome variable, is that the increased income disparities during the pandemic are mainly driven by income decreases in the lower tail of the distribution as opposed to rising top earnings or capital incomes. Depending on the data source, the exposed low-income group consists either of low-income individuals or those who might be far from the labor market altogether. Using monthly earnings data, we see both a decrease in average earnings among low-paid, part-time workers (conditional on having positive earnings during our observation window) and an increase in the likelihood, especially among young adults, of having zero earnings (which is the closest to a measure of unemployment we can get with our data). By contrast, middle- and high-income earners did not experience almost any earnings change during the pandemic. When zooming in on the circa 500 individuals in the top 0.01 percentile of the earnings distribution, we find little evidence of an economic downturn and even a marked increase in variable remuneration and bonus payments in March 2021, being 50 percent above the levels in March 2019 and 2020. Looking at the yearly data, we see that the bottom quartile group in 2020 does not only consist of young workers, but also of self-employed aged 50-64 who report substantial losses during the pandemic.

The results from the simulation-based evaluation of the government COVID-19 policies shows that they had a significant impact on income inequality. The structure of the support resembles that seen in most Western countries, and we estimate two different counterfactual scenarios. One scenario projects the crisis as sustaining employment but

²There is a surprisingly scant literature on the role of income units for estimated inequality trends, but Gottschalk and Smeeding 2000 refer to evidence suggesting relatively small effects.

allowing fewer hours worked, which is close to the German, "Hartz IV", labor-market model of tackling crises. The second scenario projects the crisis as sustaining full-time jobs but with higher unemployment, which corresponds to the traditional adjustment mechanism in the Swedish labor market. Using register data on actual support take-up of individuals and firms, we show that without the government support, the Gini-coefficient in earnings would have increased between four and six percent (around one Gini-point), which is two-three times more than what actually happened.³

In addition to these main findings, our analysis of the new monthly earnings data reveals some previously undocumented facts about the generation of income in a modern economy and its contribution to overall income inequality. For example, among workers as a whole, average earnings spikes in two months of the year: June and December. The June spike is driven by middle-income earners and reflects the payout of holiday reimbursement accrued over the year. The December spike is driven by high-income self-employed individuals who fine-tune their December wage income to maximize low-tax dividend payouts in the subsequent year. While the June spike is not seen in the Gini coefficient, the December spike has a clear, increasing effect. Another example is the recurrent March spike in the Gini coefficient, which is not visible in overall average earnings but confined to earnings in the absolute top of distribution as it reflects the executive reimbursements of last year's variable pay.⁴

There is a rapidly growing research literature on the distributional impact of the COVID-19 pandemic and the government support policies to which our paper connects.⁵ For example, Almeida et al. (2021) use the EUROMOD model to simulate outcomes. They find a quite diverse inequality impact across EU countries. The pandemic lowered inequality in nine countries, increased it in seven and had no clear impact in ten countries. Policies are mostly muting inequality, but the sign of this dampening effect varies across countries. O'Donoghue et al. (2020) also apply microsimulation methods on European data, but find more homogeneous results, namely that the pandemic increased income inequality but that redistribution (consisting of both usual progressivity and of COVID-19 support) reversed this outcome to decrease inequality. Clark et al. (2021) analyze newly assembled cross-country survey data and find quite small overall effects on disposable income inequality of the pandemic. Of particular interest to our study is that Sweden is one of their surveyed countries. They find that the pandemic clearly decreased inequality during 2020, which thus contrasts to our findings.

Limitations in our data restricts us from analyzing more closely the reasons for this

³It should be noticed that we only consider the explicit COVID-19 policy packages and not the many other social insurance policies embedded in the Swedish economy, which include both non-taxable benefits and in-kind transfers coming through subsidized public welfare services.

⁴The corporate board meetings in February decide on the annual income report and on variable reimbursements to the CEO and other executives, which typically is paid out the month after.

⁵See Stantcheva (2021) for a recent summary and discussion.

discrepancy in results. One obvious candidate is the data source used: while we use monthly administrative data with population-wide coverage, other studies use microsimulation or surveys. For instance, Clark et al. (2021) use self-reported disposable income of a few hundred households during up to four points in time during 2020, whereas we use monthly and annual tax-registered pre- and post-tax total market income of between five and eight million individuals. Another reason for the differences is that we mainly use data on labor earnings, while the above-mentioned studies use measures of disposable income. It should be mentioned, however, that when we move somewhat closer to a disposable income-measure by adding capital income and income from own businesses (sole proprietorships) to labor earnings using yearly data, we get a stronger increase in income inequality. Finally, a possible reason for the differences across countries might be that the amount of support in Sweden appears to have been small in international comparison (IMF 2021). As mentioned, data do not allow us to delve into these issues. However, we do perform a simulation in order to assess whether income inequality could have been decreased if the actual amount of support in Sweden had been hypothetically (and, as we stress, unrealistically) distributed differently than what was actually the case. This analysis is presented at the end of section 4.

In the remainder of the paper, we first present the data used in section 2 and then continue with analyzing the effects of the pandemic on monthly earnings inequality in section 3. Section 4 presents the policy simulations and section 5 examines some key driving factors behind the results. Section 6 analyzes the impact on annual market income inequality, and section 7 concludes.

2 Data

We measure income inequality using data from two population-wide registers held by the Swedish Tax Agency (Skatteverket): the monthly payroll tax register and the annual personal tax-return register.

The monthly payroll tax register is our main data source. It was launched in January 2019 and consists of monthly pre-tax and post-tax wages and salaries of all employed individuals in the country regardless of size of earnings or length of employment contract. Before 2019, this register was annual, but otherwise similar nature. Since we access data directly from the Swedish Tax Agency, we can analyze the reported earnings almost exactly when they are submitted to the authorities. This immediacy in data access implies that we observe outcomes almost in real-time, which appears to be a unique contribution to the literature. The population covered in these monthly earnings data are all individuals with non-zero earnings during at least one month during our observation period (January 2019 to March 2021). There is a considerable amount of individuals with zero earnings and who are therefore not employed. We do not have any additional

information on these individuals other than the fact that they had zero earnings during a particular month. In lack of a better measure, we use zero earnings during a particular period as a measure of unemployment, fully aware that this definition poorly corresponds with the standard definition of unemployment, especially in a welfare-state as Sweden.

The annual tax-return register contains capital income and all income taxes paid.⁶ Its problem for our purposes is that the full-year income statement blurs the pandemic impact since 2020 contains both pre-pandemic and pandemic months. The final deadline for handing in tax returns for income year 2020 was as late as May 3, 2021, and because of delayed submissions we do not observe all tax returns. However, we collect data after the main extra deadline (June 1) and make similar restrictions in data collection for earlier years to make data comparable.⁷ Tables A1 and A2 in Appendix A provide a short description of the monthly payroll tax register and the annual tax return register, respectively. Among others figures, percentile thresholds used throughout the paper are presented there.

A general caveat with these tax register databases is that they contain limited information about household composition, socioeconomic characteristics and limited information about income support to low-income households.⁸ The analyses are therefore mainly conducted on adult taxpayers, which means salaried individuals 18-64 years old in the monthly payroll register and adult individuals 18 years old and above in the annual tax-return register.

Finally, we also access register data on government COVID-19 support payments to firms and individuals. The largest support policy is the Short-Term Work Allowance ("korttidsstöd"), an individualized wage support that is paid out to firms but also recorded for their final individual recipients. Data on the the work allowance is collected by the responsible agency, Swedish Agency for Economic and Regional Growth (Tillväxtverket), and also available at the Swedish Tax Agency. The second-largest support package, the

⁶The monthly payroll register only reports preliminary taxes paid and thus disregards the substantial earned income tax credit which is subtracted retroactively in next year's tax return.

⁷Officially, the final date for filing the personal tax returns was May 3, 2021, but under special circumstances, some taxpayers are allowed to file their tax returns later. The data in this section covers tax returns retrieved from the tax register on June 3, 2021. The latest filing date in the data is June 2, 2021, and according to our assessment based on previous tax years, about 400,000-450,000 more individuals should be expected to file their taxes during the coming months. To make the data for 2020 comparable to previous years, we have applied the same data restriction for 2018 and 2019. In other words, we have removed observations for individuals who filed their taxes after June 2. As the selection of those who file their taxes late may have changed as a consequence of the pandemic, we ran a robustness analysis covering all the relevant results the paper. In the robustness check, we used a balanced panel, or in other words, we only used observations for individuals who had filed their personal taxes each year, and in addition, had filed them before June 3 each year. The results from this balanced panel are qualitatively very similar to the results presented in the paper, meaning that the main changes we observe in 2020 are not driven by selection. The results for the balanced panel are available upon request from the authors.

⁸For legal reasons, the Swedish Tax Agency is not free to combine their tax registers with registers from other public authorities covering, for example, household characteristics, transfers received, or educational attainment.

Reorientation Support ("omställningsstöd"), is directed to mainly small- and medium-sized firms and is paid out roughly in proportion to their reported turnover loss during the pandemic. We only observe payments to firms in the register set up by the responsible authority, the Swedish Tax Agency, but since we also know the individuals working in these firms, we can allocate the support to them after making certain assumptions about capital and labor shares of income (see further section 4).

3 Earnings inequality during the pandemic

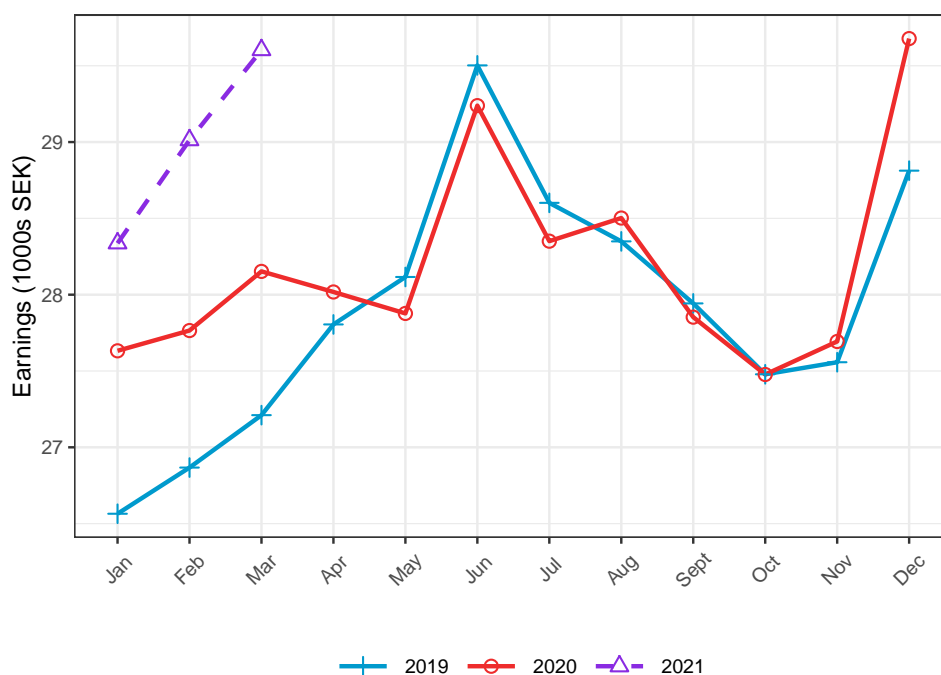
This section analyzes trends in earnings levels and earning sinequality trends in Sweden during the COVID-19 pandemic in 2020 and early 2021.

3.1 The level of earnings

Figure 1 displays the evolution of average monthly pre-tax wages and salaries among all working individuals in Sweden from January 2019 to March 2021. Comparing the earnings change between January-February 2019 and January-February 2020, both pre-pandemic periods, with the earnings change between pre-pandemic March-December 2019 and pandemic March-December 2020, in shows that average total earnings in the working population was clearly affected by COVID-19. Earnings in January-February increased by 3.5 percent between 2019 and 2020, but they did almost not change at all between March-December 2019 and 2020. This simple exercise suggests an overall earnings decrease of 3.5 percent. However, looking at January-March 2021, earnings are 2.5-3.5 percent higher than in the same months a year before, which suggests a rebound of the Swedish labor market although probably not to a pre-pandemic long-term trend. The figure also shows interesting monthly variation patterns in the aggregate earnings which are new to the literature due to these new monthly administrative earnings data. Two large monthly spikes stand out, one in June and one in December. In order to explain them, we need to look closer at the earnings patterns in different parts of the earnings distribution.

Figure 2 presents average earnings trends in earnings quantile groups of the working population: bottom quartile (P0-25), second quartile (P25-50), third quartile (P50-75),

Figure 1: Average earnings, monthly among all income earners



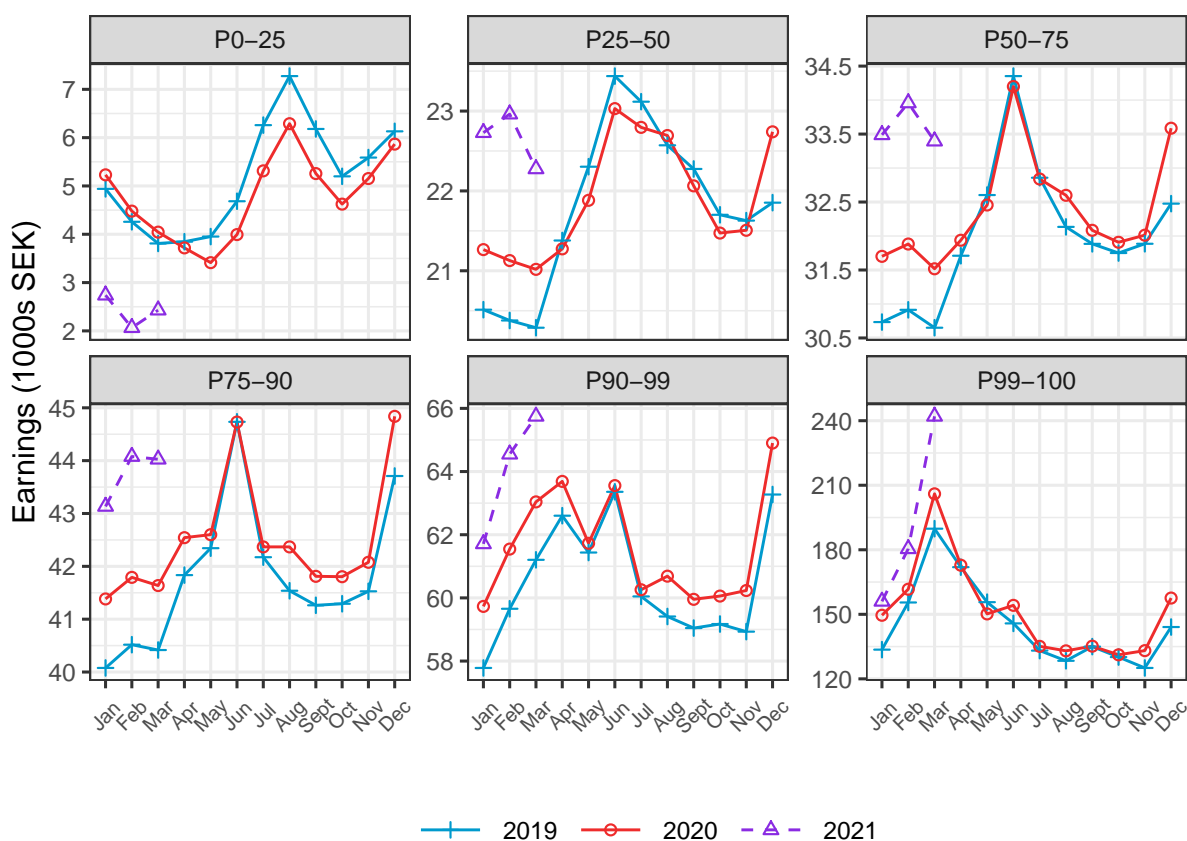
Note: The figure shows the average monthly pre-tax earnings in the working population 18-64 years old.

fourth quartile less the top decile (P75-90), the top decile less the top percentile (P90-99), and the top percentile (P99-100). The figure shows that there are stark differences between these groups in terms of earnings levels, variation and also the effect of the COVID-19 pandemic.

The bottom quartile consists of workers with either zero or close-to-zero earnings and their average monthly earnings is therefore quite low, 2,000-7,000 SEK (circa 200-700 EUR). This group has an earnings spike in August, which most likely reflects a seasonal employment effect. Comparing pandemic and pre-pandemic periods shows a drop in earnings by around 10-15 percent during 2020 and a much higher drop in early 2021. The second, third and fourth quartile groups (less the top decile) consists of full-time workers between the 25th and 90th earnings percentiles. Their earnings follow a quite similar pattern during the studied period, with earnings spikes in June and December as in the overall aggregate earnings above. The spike in June reflects an extra holiday reimbursement to employees paid out when going on summer vacation ("semesterlön"). The spike in December 2020 in the second and third quartiles reflects a one-time payment ("engångsbelopp") to broad employee groups in 2020 as part of a new collective wage agreement between employers and trade unions.⁹ In the fourth quartile, the December spike also reflects a supplementary wage payment made by owners of

⁹The one-time pay supplement to workers in the public-sector services union (Kommunal), the one-time payment in 2020 was 5,500 SEK (<https://www.kommunal.se/fragor-och-svar-om-kollektivavtalet-dig-som-arbetar-inom-kommuner-eller-regioner>)

Figure 2: Average monthly earnings across the earnings distribution, 2019-2021.



Note: The figure shows the average monthly pre-tax earnings in the working population 18-64 years old. Individuals are categorized in earnings quantile groups based on their full-year income.

closely held corporations to themselves in order to maximize the amount of low-tax dividend payouts that they can make in the following year.¹⁰ The pandemic impact on all of these groups is also similar in that the pre-pandemic increase is not observed during the rest of 2020, but there is a notable increase in 2021.

The top decile earnings differ from the rest of the population. Its lower nine-tenths (P90-99) exhibit earnings spikes in June (smaller) and December (larger), confirming a higher representation of self-employed individuals than the lower income groups. The top percentile is quite different, not only in level of earnings but also concerning its notable earnings spike in March. This spike reflects the variable pay to corporate executives (bonuses and other gratifications).¹¹ Simple inspection of these earnings patterns

¹⁰In the Swedish dual income tax system, labor and capital income is taxed according to separate tax schedules. Owners of closely held corporations with few owners ("fämansbolag") are allowed to a specifically low tax rate if they can show that they have payed out wages in the year before. This rule is well-known and accountancy firms help owners to calculate their December wage payment so that it comes as close as possible to maximizing the amount of low-tax dividend payouts the next year would the company decide to make such payouts. (<https://blogg.pwc.se/taxmatters/loneuttag-2020-famansforetag>).

¹¹The timing is explained by the fact that most companies have their annual meetings in March, and the board therefore finalizes the annual report and decides on variable pay to executives in February, which is generally paid out the following month. There is some degree of variation, which explains that also April

indicate similar patterns as among the rest of full-time employees. Perhaps most notable is the markedly higher spike in March 2021 than in March previous years for the top percentile group. We will return to this observation below.

3.2 The inequality of earnings

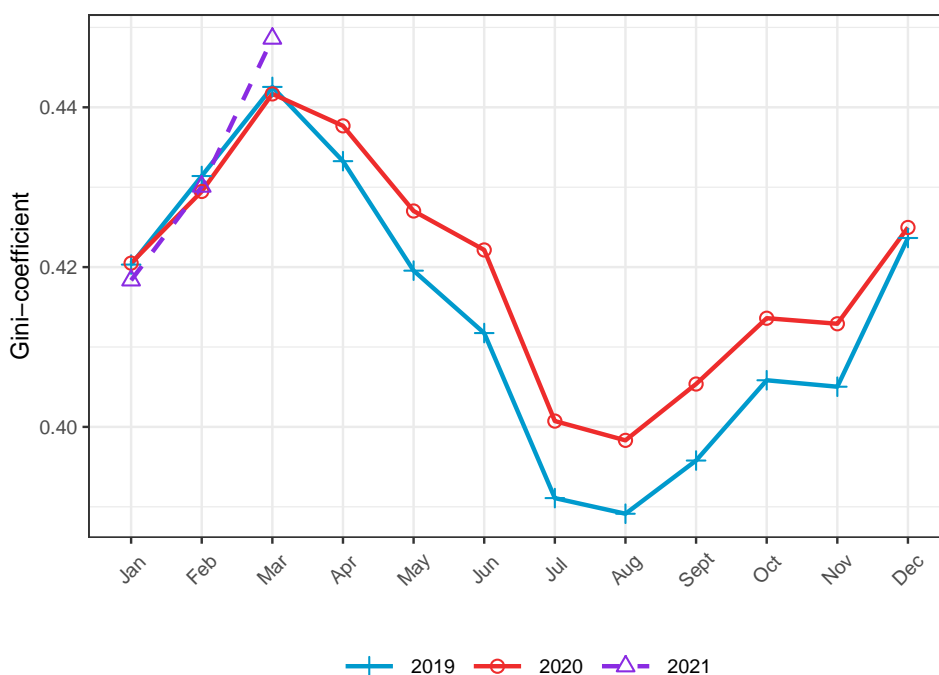
How has earnings inequality evolved during the COVID-19 pandemic? Figure 3 presents the Gini coefficient of monthly pre-tax labor earnings among Swedish working adults 18-64 years old. Before analyzing how the crisis has influenced inequality, let us briefly discuss some stylized patterns in the monthly Gini variation, which, to the best of our knowledge, are new to the scientific literature concerning administrative full-population data. A first observation is that the monthly Gini variation is strikingly large as year-to-year Gini changes rarely exceed one–two percent. During the severe economic crisis of the early 1990s in Sweden, the earnings Gini among full-time employed increased by five percent. Here, we observe a monthly Gini span within a single year of about five Gini points, or more than ten percent. A second observation is that the Gini exhibits two marked monthly spikes: March and December. Referring to our previous section, both of these spikes reflect the earnings hikes observed among top earners (see figure 2). It is not the first documentation of such a large impact of top tail variations on the Gini coefficient (see, for example, Alvaredo (2011)), but it has not been done in this manner at the monthly level and linking it to specific earnings patterns in the population.

Turning to the inequality effects, figure 3 documents a clear increase in the Gini going from the pre-pandemic to the pandemic periods. In 2019, the Gini varied between 0.39 and 0.44, and in the pandemic period it has varied between 0.40 and 0.45. The increase is thus about one Gini point, which represents a 1.0-2.5% higher Gini coefficient. That this increase is associated with the onset of the pandemic in April 2020 appears clear. The increase has also lasted almost unchanged, with the exception for December when there is no discernible difference between the years.

Earnings shares among bottom, middle and top groups in the pre-tax earnings distribution are shown in figure 4. These shares complement the inequality analysis of the Gini coefficient by presenting a finer picture of where in the distribution that the overall inequality patterns emerge. Looking first at the bottom half of the distribution, we can see that it experienced lower earnings shares at the time of the outbreak of the pandemic in March-April 2020. The decrease was largest, in relative terms, in the bottom quartile where the earnings share decreased by one-tenth in 2020 relative to 2019. In the upper half, earnings shares instead increased during the pandemic. The relative effect was quite similar across the quantile groups within the upper half, around one-two percent increases.

exhibits higher earnings in the top quantile group.

Figure 3: Inequality of monthly pre-tax labor earnings: Gini coefficient, 2019–2021



Note: The figure shows the Gini-coefficient in monthly pre-tax earnings in the individual working population aged 18-64.

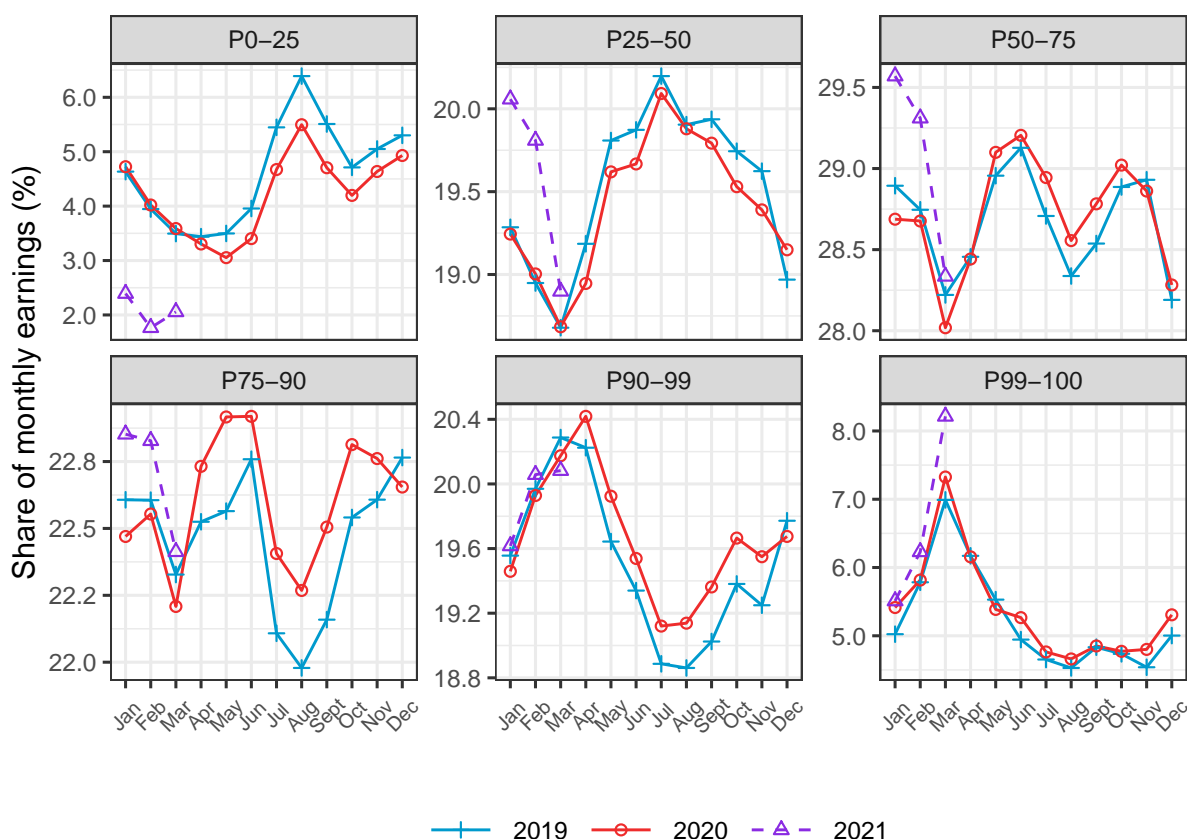
Thus, the analysis of earnings shares confirm the results from the analysis of average earnings and the Gini coefficient in showing the clearly regressive nature of the pandemic shock to labor earnings.

4 Government COVID-19 policy and inequality: A simulation analysis

The Swedish government launched during 2020 and 2021 a series of COVID-19 policies containing income support to employees and firms experienced negative shocks during the pandemic. We analyze the distributional impact among working-age individuals of the two single largest policy packages: the Short-Term Work Allowance and the Reorientation Support. The work allowance package amounts to 50 billion SEK (circa 5 billion EUR) and the reorientation support package to 39 billion SEK (3.9 billion EUR) in the budget year 2020-2021 and represents approximately one-fourth of the government's total COVID-19 support budget.¹² In comparison to other countries, the Swedish fiscal support in response to COVID-19 seems to have been relatively small, roughly half the size of the average support in advanced economies (IMF 2021).

¹²The total budgeted government COVID-19 support was 389 billion SEK. Other policies include reduced social security contributions, government coverage of all sick-leave pay, more generous allowances for health insurance and parental leave.

Figure 4: Earnings shares across the earnings distribution, 2019 –2021



Note: The figure shows the average monthly earnings in the working population 18-64 years old. Individuals are categorized in earnings quantile groups based on their full-year income.

The work-allowance support is directed to employees, allowing them to reduce their work-hours up to 80% without losing more than 12 % of their earnings. While employers pay for the actual work time (plus a small extra charge), the government tops up the salary to almost the full contracted amount.¹³ The reorientation support goes directly to firms that have experienced falling sales during the pandemic. Although it is handed out to firms and not to employees directly, we interpret the support as being shared between owners and employees, assuming a factor-share division of 70% to labor and 30% to capital.¹⁴ Thereafter, we allocate the support money to each worker in proportion to their reported individual earnings.

Data on individual- and firm-level support are retrieved from registers kept by the responsible authorities Tillväxtverket (work allowance) and the National Tax Agency (reorientation support). Data on work allowance are also available at the National Tax Agency. To observe the exact amounts handed out offers the analysis a unique degree

¹³See appendix table A3 for the scheme over alternative work-time reductions, effects on earnings and on contributions by employers and government.

¹⁴A capital-labor split of 30-70 is a standard conjecture in the macro literature (Rognlie 2015), but at the firm-level this share may vary considerably.

of accurately in its estimation of the distributional policy impact. We observe the work-allowance support during April-November 2020. We observe the support distributed in April-June 2020, but applications for later months are still pending.

We estimate distributional effects of the two support policies in two *counterfactual simulations* where we subtract the observed support money from the observed earnings. In *Policy Simulation 1* (PS1), we let each employee keep the job but subtract the individually observed (work allowance) or estimated (reorientation support) support from the employee's salary and thereafter recalculate the inequality of earnings exclusive of the support. In *Policy Simulation 2* (PS2), we instead let employees keep their salary but reduce the number of employees so that the firms' total wage bills equal their wage costs net of the government support. We do this by removing workers from the bottom of the within-firm earnings distributions (acknowledging the established "last in-first out" rule in the Swedish labor market) until we get enough workers to cover the support money.¹⁵

Notice that the difference between PS1 and PS2 corresponds to an institutional difference across European labor markets. The PS1 variant with "reduced hours, fixed employment" is close to a German, "Hartz IV", labor-market model, in which a crisis is tackled by allowing for a reduction of work-hours and earnings while keeping employment intact. By contrast, the PS2 variant with "fixed hours, reduced employment" is closer to a traditional Swedish labor-market model, where central wage agreements stipulate full-time jobs and full-time pay as the baseline and the unemployed get coverage from government-backed unemployment insurance. The fact that the work allowance is implemented in Sweden thus represents a deviation from the traditional strategy.¹⁶

4.1 Policy simulation results

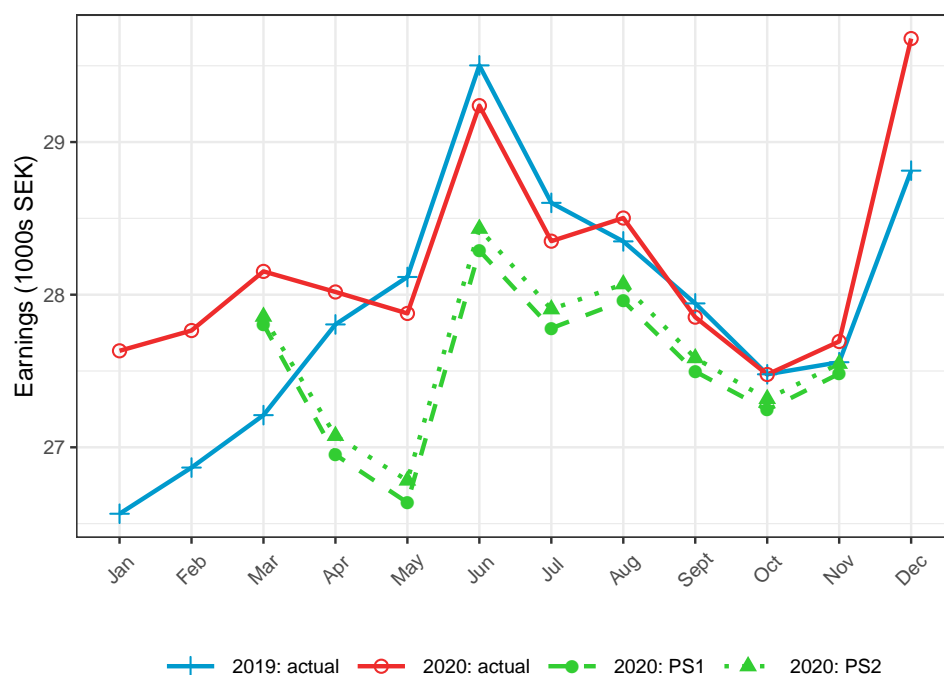
Figure 5 shows aggregate average earnings using actual outcomes and the counterfactual simulations without policy support. This shows that average earnings without support would be around four percent lower in April-June, two percent lower in July-August and one percent lower in September-November. In other words, the policy had initially a relatively large muting effect on the crisis, but that it decreased later in the pandemic.¹⁷ To assess the crisis effect on earnings, one would also need to consider that average earnings increased by more than three percent in the pre-pandemic era between

¹⁵We typically get integer effects for the last worker, such that keeping that worker would make the firm run a loss while firing the worker would result in a net surplus. In these cases, we opt for letting the worker keep the job and the firm run a loss. While this is not an equilibrium for the firm, if one also acknowledges firing costs and expectations of a recovery within a not too distant future, keeping the worker may actually be optimal for the firm.

¹⁶During the crisis in 2008-2009, there was a partial trial with short-term wage support in the Swedish metal industry following a bilateral agreement between employers and the Metal workers' trade union.

¹⁷Note that our support money is not the final total for all the support due to considerable lags in the support programs. By May 2021, it was still possible for firms to apply for SWTA support covering December 2020 and RS support covering July-December 2020.

Figure 5: Population average earnings with and without COVID-19 support

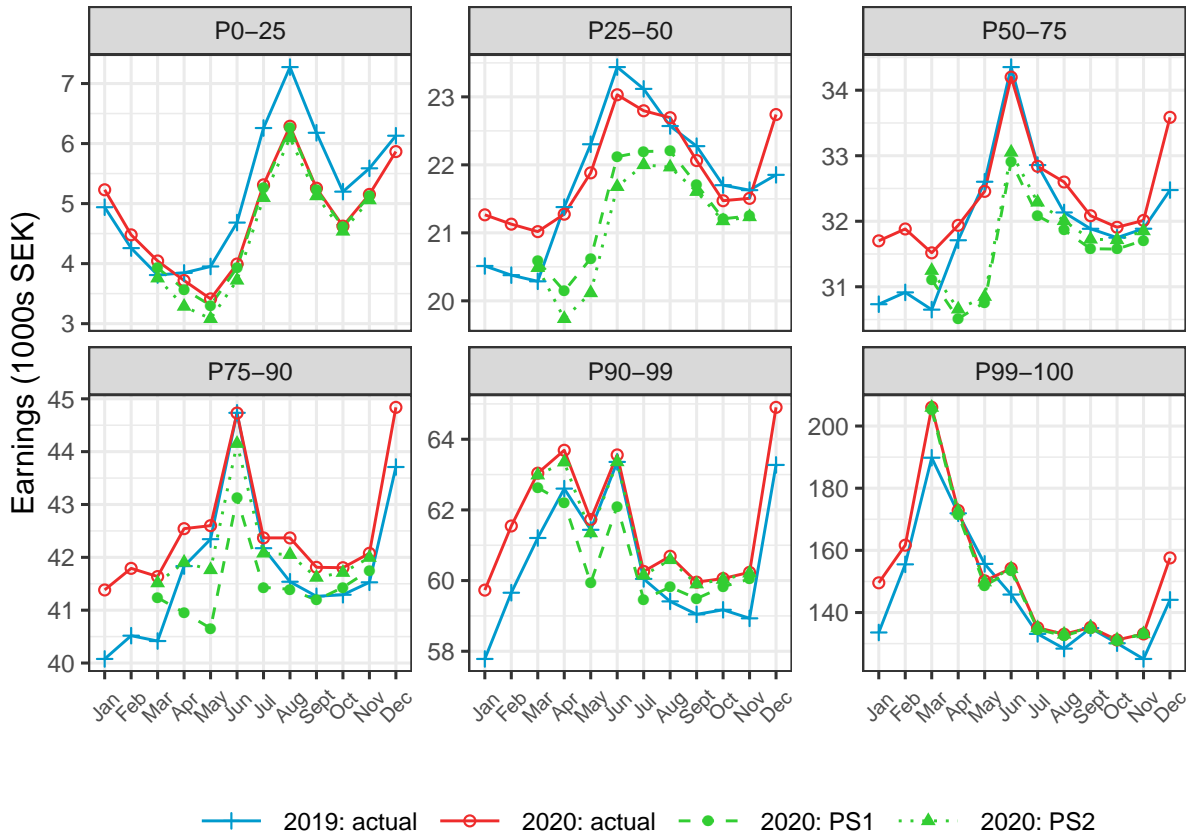


Note: The figure shows average earnings among working individuals. "Actual" denotes earnings in the payroll register, including ant government support pay. We subtract all government COVID-19 policy support in the Short-Term Wage Allowance and Reorientation Support programs using two counterfactual scenarios: PS1 assumes sustained employment but fewer hours worked and PS2 assumes sustained full-time jobs but higher unemployment. We do not observe support payments in December 2020.

January-February 2019 and the same months in 2020. Assuming such earnings increase over the whole 2020, the total pandemic impact on average earnings in Sweden was a drop of seven percent in April-June and four-five percent in the second half of 2020. Turning to the distributional impact of the government's COVID-19 policy, we begin with presenting the effects on average earnings in different quantiles and thereafter on the Gini coefficient and income shares.

Figure 6 presents earnings effects across quantile groups in the two counterfactual scenarios. In the PS1 scenario ("hours reduced, employment fixed"), the bottom quartile is almost unaffected by the crisis but in the second and third quartiles, earnings drops by 2-5% over the course of 2020, with the impact being the largest in April and then gradually decreasing. The fourth quartile also experiences lower earnings due to the crisis, but the effect is both lower in the latter part of 2020 and smaller the higher up in the distribution one gets. In P75-90, earnings drop 1-4%, in P90-99 earnings drops 1-2% and in the top percentile there is almost no crisis effect at all. In the PS2 scenario ("employment reduced, hours fixed"), the effects of the crisis are quite differently distributed as compared to PS1. The bottom quartile experiences a drop of 2-10%, which is relatively large but still small in nominal terms. The second quartile earnings drops 2-7%, the third quartile earnings by 1-4% and the fourth quartile drops less, around 1%

Figure 6: Average earnings in quantile groups with and without COVID-19 support.



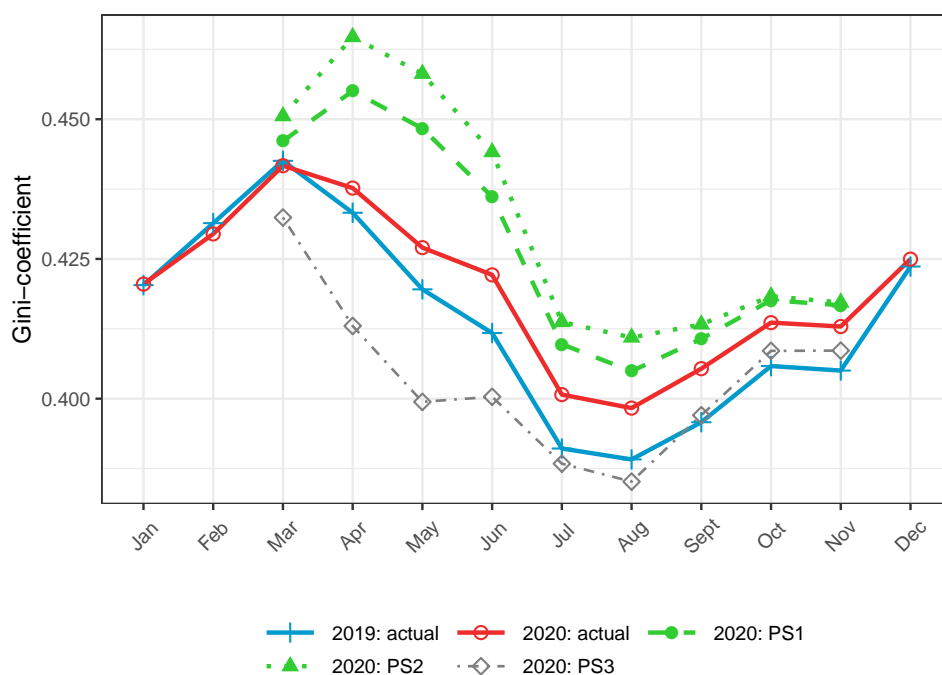
Note: The figure shows the average monthly earnings in the working population 18-64 years old. Individuals are categorized in earnings quantile groups based on their full-year income. "Actual" outcomes denotes the earnings dispersion as recorded in the monthly payroll register. The COVID-19 policy support payments, the sum of Short-Term Work Allowance and Reorientation Support, is subtracted from each individual's earnings following two presumed scenarios: sustained employment but fewer hours worked (PS1) or sustained full-time jobs but higher unemployment (PS2). Note that we do not observe support payments in December 2020.

among those below the 90th percentile and around 0.5% percent in the top decile.

Comparing the two scenarios generates an interesting picture. While the PS1 allocates most of the crisis impact in the form of lower earnings to the upper half of the distribution, the PS2 allocates most the crisis effect to the lower half of the distribution. This pattern is explained by the fact that PS1 reduces earnings among all the workers who have received support and PS2 instead directs the shock mainly to low-paid, less experienced workers who become unemployed. The government support, defined as the difference between the projected counterfactual and actual outcomes, has had the opposite effect on earnings. In the PS1 scenario, the government support is directed more to groups in the middle and upper levels of the earnings distribution and in the PS2 scenario, funds are channeled disproportionately to the lower parts of the distribution.

Figure 7 presents Gini coefficients to assess the distributional impact of the government support. Both counterfactual scenarios previously discussed (PS1 and PS2) result

Figure 7: Inequality effect of COVID-19 policy support.



Note: The figure shows the Gini-coefficient of monthly earnings in the working population 18-64 years old (see figure 3). "Actual" outcomes denotes the earnings dispersion as recorded in the monthly payroll register. The COVID-19 policy support payments, the sum of Short-Term Work Allowance and Reorientation Support, is subtracted from each individual's earnings following two presumed scenarios: sustained employment but fewer hours worked (PS1) or sustained full-time jobs but higher unemployment (PS2). Finally, under PS3, we perform a simulation whereby all support is equally distributed among individuals below the lower quartile (P0-25). Note that we do not observe support payments in December 2020.

in higher Gini coefficients than in the actual 2020 baseline. When comparing to the 2019 level, the PS1 Gini coefficient is 5-7% higher in April-June and 3-5% higher in July-November. The PS2 Gini coefficient is 7-10% above the baseline in April-June and 3-6% higher in July-November. This means that without the government support, Sweden would in the first three months of the pandemic have experienced an increase in the earnings inequality that would have been two–four times larger than what actually happened had the country practiced a German-like labor market model where all workers retain their job but at fewer hours and less pay (PS1). However, had Sweden instead had a Swedish-like model where some workers retain their job and their pre-pandemic salary while some would have lost their job (PS2), earnings inequality would have increased between three and six times more than what actually happened. In the second half of 2020, the inequality increase without government support is smaller in both scenarios, but still with the PS2 scenario resulting in higher inequality than the PS1 scenario.

As discussed in the introduction, we document an increase in inequality during the pandemic, while Clark et al. (2021), using survey data, find that inequality in Sweden has increased. We do not have the proper data in order to delve into the exact reasons behind this difference. Below, we present a simulation aimed at shedding at least some

light on one potential candidate, the amount of support. As documented in IMF (2021), the Swedish fiscal support in response to COVID-19 seems to have been roughly half the size of the average support in advanced economies. This raises the question whether the actual amounts of support in Sweden could have, hypothetically, decreased inequality, should the money have been distributed among those with the lowest earnings. To this end, in PS3 in Figure 7, we have simulated the monthly values of the Gini-coefficient under that exact scenario. First, we removed the actual support amounts received on the individual level. Second, we distributed the support money equally among individuals in P0-25 on a monthly basis. This means that the total amount of support is the same under PS3 as was actually given during March-November 2020. This is obviously an unrealistic scenario given the actual purpose of the support money being analyzed, namely to help firms and not individuals during the crisis. It is reasonable to expect that many firms would have had to lay off under such a scenario, potentially leading to different actual outcomes than what we simulate. The aim of the exercise is just to see whether the amount of support could, hypothetically, decrease the Gini-coefficient if it were distributed differently. As is clear from the PS3-curve in Figure 7, such an unrealistic policy would have decreased the Gini-coefficient below its 2019 values during March-August, and increased it to just above during September-November.

5 Driving factors: Unemployment, top earners, sector and gender

This section examines how the pandemic's impact on earnings inequality operates. We focus on four pathways that our data allow us to analyze: unemployment, top earnings, public-private sector reallocation, and gender differences.

5.1 Unemployment effects

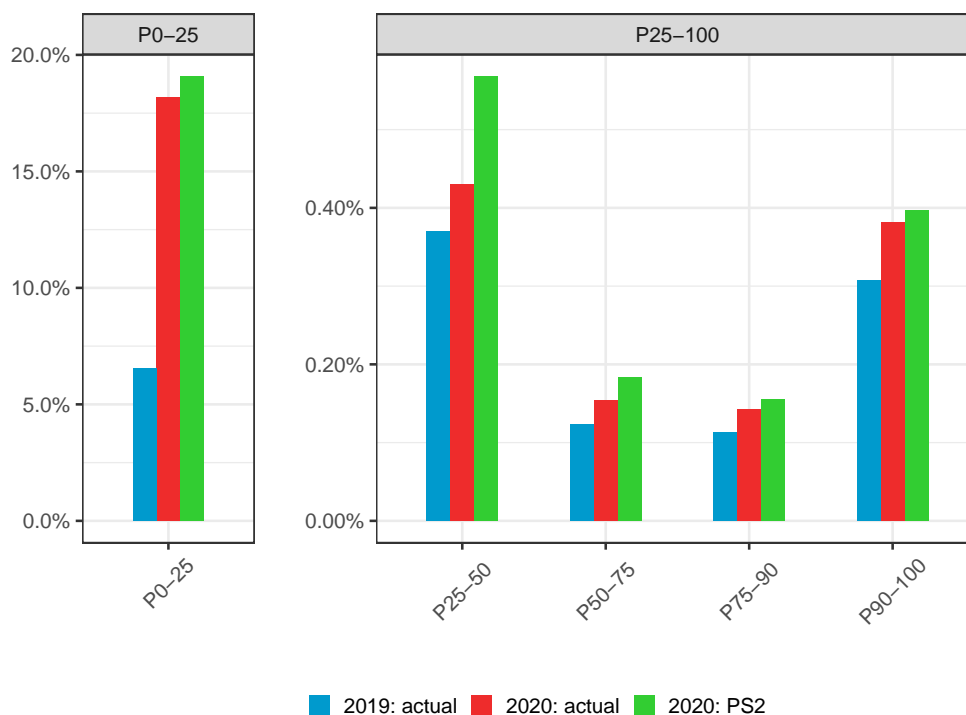
The unemployment effects of the pandemic are studied in Figure 8. The figure displays the share of workers in different quantile groups that had non-zero earnings (that is, was employed) during January-February 2019 and 2020, and that became unemployed during March-December. Thus, a worker is defined as unemployed when he or she has zero earnings during all months in the relevant period. About 6.5 percent of the bottom quartile workers during January-February 2019 were later unemployed during March-December. Employees in the higher quantile groups were almost never unemployed later in the year; their shares vary between 0.1 and 0.35 percent. In 2020, the share of pre-pandemic (January-February) bottom quartile workers that became unemployed in March-December increased to 18 percent, a threefold increase. By contrast, the unemployment among the higher-earnings groups changed only marginally, to 1.3 percent

(0.15-0.40 percent across groups).

The figure also shows counterfactual unemployment estimates, which are based on our simulations above (PS2) where we assumed that some workers had to leave their firms if these would not have received any government support money (we assumed that it was the less educated and lower paid workers who had to go). The simulation shows that an additional 1.2 percent of workers would have become unemployed, with about one percent extra from the bottom quartile and the remaining extra 0.2 percent mostly coming from the second quartile workers.

Altogether, the results show that the pandemic crisis has increased unemployment in the Swedish labor market, and that this increase was disproportionately allocated to low-income, presumably part-time, workers in the bottom earnings quartile. We also find that without the government support, unemployment would have increased even more, again mainly in the bottom earnings quartile, but this impact is still relatively small in comparison with the observed unemployment effect of the pandemic. All this points to the relevance of extensive-margin effects for the observed changes in earnings inequality during the COVID-19 pandemic.

Figure 8: Unemployment shocks during the pandemic across the distribution.



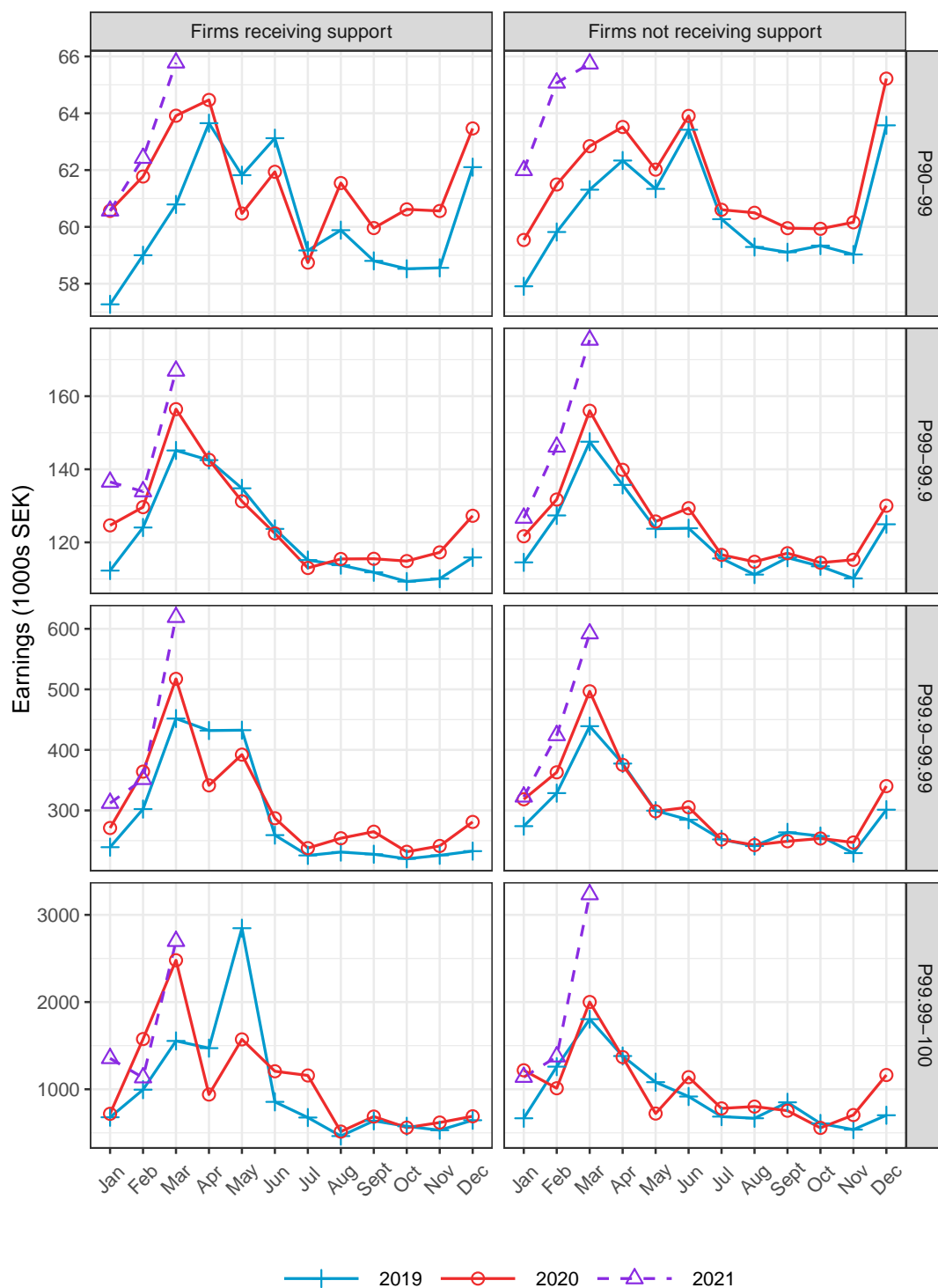
Note: The figure shows the share of earners in different earnings quantile groups during January-February in 2019 and 2020 that had zero earnings in March-December the same year.

5.2 Top earnings

Top earners are a specific group in the distribution. Their high incomes affect the overall income distribution disproportionately much, and they are also often leading persons in the economy. In order to better understand how they have fared during the pandemic, we follow the general lesson from the top income literature of the studying the top in great detail and split up the top percentile into three smaller groups: P99-99.9, P99.9-99.99 and P99.99-100. Furthermore, we separate between top earners working in firms receiving government COVID-19 support and firms that did not, which is of interest for analyzing the link between receiving public crisis support and paying extra remuneration to top executives. Since we observe earnings in March 2021, we capture the variable remuneration related to the pandemic year of 2020.

Figure 9 presents the monthly earnings across the top groups across firms that did and did not receive government support. The results show that the pandemic struck harder on top earners in firms receiving support, with April-July earnings being at or below in 2020 compared to 2019. However, it is noticeable that the top earners' pay increased significantly in early 2021, and that the remuneration in March 2021 was substantially higher than in March 2020. In the March 2019 and 2020, the monthly earnings in the top 0.01 percent was 2.7 million SEK (roughly 270,000 EUR), and in March 2021, it was almost 4.5 million SEK (450,000 EUR). Since we cannot separate between fixed and variable pay, we are unable to explain this result further.

Figure 9: Top earnings and government COVID-19 support.



Note: Average monthly pre-tax earnings in quantile groups that are defined according to full-year earnings. Firms are divided into those receiving government COVID-19 support (see section 4) and those not receiving any such support (this group includes all public-sector employees).

5.3 Sector and gender effects

Did the pandemic affect private-sector or public-sector workers the most? Was the impact on earnings different for women and men? In this section, we run regressions to address these questions. We begin with difference-in-difference regressions and estimate pandemic effects on average earnings across groups, holding the influence from average yearly effects and within-year trends constant. Thereafter, we run unconditional quantile regressions (Firpo et al. 2008, 2018) to estimate quantile-specific effects, both across the entire distribution and within sectors and gender (with quantiles still defined over the whole population).

Our chosen estimator utilizes within-year variation over two different calendar years to estimate the impact of the pandemic. To fix ideas, let Y_{ipt} denote the outcome variable (monthly earnings or a dummy for positive earnings) for individual i during the period January-February ($p = 1$) or March-December ($p = 2$) measured in year $t = 2019$ or 2020 . Furthermore, let $D_t = \mathbf{1}[t = 2020]$ where $\mathbf{1}[\cdot]$ is the indicator function taking the value one if the expression within brackets is true and zero otherwise, and $S_p = \mathbf{1}[p = 2]$. In the empirical analysis to follow, we will use monthly data. In order to convey the main ideas, it is useful to disregard the monthly dimension for now and take $p = 1, 2$ as our within-year observation frequency. Keeping that in mind, consider the following model:

$$Y_{ipt} = \delta + \theta_1 D_t + \theta_2 S_p + \theta_3 D_t S_p + u_{ipt}, \quad (1)$$

where u_{ipt} is an error term. Let $\bar{Y}_{pt} = 1/N_{pt} \sum_i Y_{ipt}$ (N_{pt} being the number of observations during period p and calendar year t) and finally, $\Delta Y_t = \bar{Y}_{2t} - \bar{Y}_{1t}$. Using a random sample of the population (recall that we have the complete population), the parameter of interest θ_3 identifies

$$E(\Delta Y_{2020} - \Delta Y_{2019}). \quad (2)$$

In a companion paper (Angelov and Waldenström 2021), we discuss identification issues in this setting albeit for firm-level data. The main identification assumption in that paper as well as here is analogous to the parallel-trends assumption in a standard DD-setting. Formally, for effect identification, we need

$$E(\Delta Y_{2020}^0 - \Delta Y_{2019}^0) = 0, \quad (3)$$

where we use the potential outcomes framework such that ΔY_t^0 is defined as the within-year difference during year t under the assumption that there was no pandemic during year t . In Angelov and Waldenström (2021), we discuss and run several placebo effect estimations in order to informally test 3 indirectly. Unfortunately, the monthly earnings data used in this paper start in 2019 meaning that it is unfeasible to run placebos. As it is impossible to empirically assess the parallel trends assumption using the monthly earn-

ings data, we proceed by stating the empirical specification below and go on to discuss the results, noting that we cannot exclude the possibility that an ongoing pre-COVID negative within-year trend in wages or employment could potentially distort the presented effect estimates.

We start by estimating a version of (1) on monthly data. The empirical specification is the following:

$$Y_{imt} = \delta_0 + \theta_1 D_t + \theta_2 S_m + \theta_3 D_t S_m + u_{imt}, \quad (4)$$

where $m = 1, 2, \dots, 12$ denotes month, $S_m = \mathbf{1}[m \geq 3]$, and D_t is defined as previously. For inference, we use standard errors clustered at the individual level. As the effect is essentially identified at group level and pre-covid observations of treated taxpayers to a large extent act as their own controls, individual fixed effects are not needed for identification. We get very similar results when we add individual-fixed effects.

Table 1 presents the difference-in-difference estimation results for two dependent variables: log earnings (columns 1 and 2) and employment (columns 3 and 4, defining employment as having positive earnings). A first result is that the pandemic crisis reduced average pre-tax earnings by 3.8 percent in its first year, accounting for time trends and within-year fluctuations (column 1). Looking at effects across sectors, the results show that public-sector workers experienced a 1.2 percent larger-in-magnitude negative earnings shock in comparison to private-sector workers (column 2). The relative effect for women in the private sector (relative to men in the private sector) shows that women were hit harder by the pandemic (−0.8 percent). We do not find evidence of any additional effect of being a woman employed in the public sector (column 2, insignificant point estimate of 0.3 percent).

Turning to the employment effects, we see that the pandemic resulted in a 1.4 percent reduction in overall employment in our population of individuals having at least one month with earnings between January 2019 and March 2021 (column 3).¹⁸ However, public-sector employment actually expanded during the pandemic: the relative effect for men in the public sector compared to men in the private sector is 2.9 percent, implying an employment increase of about 0.9 percent in the public sector (column 4). The relative effect on employment among women in the private sector compared to men in the private sector is negative (−1.2 percent), and thus women were affected more negatively than men also with regards to employment. In the public sector, there is an additional positive relative effect on employment for women of about 0.4 percent (column 4). Summing up the results, we find that the entire employment reduction during the pandemic took place in the private sector. Combining the lower earnings but larger employment among public-sector female employees indicates an expansion of low-earnings jobs, either in the

¹⁸Note however that the model is estimated on data for 2019 and 2020 solely.

Table 1: Effect of the COVID-19-impact on monthly earnings

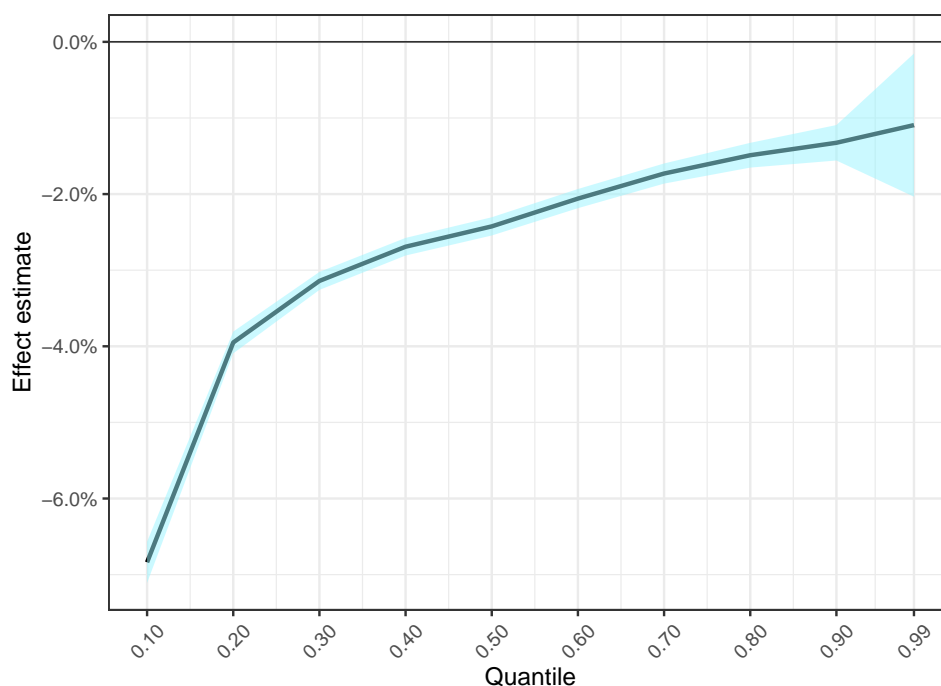
	Log earnings		Employment	
	log(w)	log(w)	1[w>0]	1[w>0]
	(1)	(2)	(3)	(4)
<i>COVID-19 impact</i>	-0.038*** (0.0005)	-0.025*** (0.001)	-0.014*** (0.0003)	-0.020*** (0.001)
<i>Impact × Woman</i>		-0.008*** (0.001)		-0.012*** (0.001)
<i>Impact × Public employer</i>		-0.012*** (0.002)		0.029*** (0.001)
<i>Impact × Woman × Public employer</i>		-0.003 (0.002)		0.004* (0.002)
<i>Year 2020</i>	0.062*** (0.0005)	0.055*** (0.001)	0.002*** (0.0004)	0.005*** (0.001)
<i>March–Dec</i>	0.049*** (0.0003)	0.051*** (0.0005)	0.023*** (0.0002)	0.027*** (0.0004)
<i>Woman</i>		-0.192*** (0.002)		-0.004*** (0.001)
<i>Public employer</i>		-0.106*** (0.002)		-0.024*** (0.001)
<i>Woman × Public employer</i>		0.063*** (0.003)		0.034*** (0.001)
<i>Year 2020 × Woman</i>		0.024*** (0.001)		0.001 (0.001)
<i>Year 2020 × Public employer</i>		-0.012*** (0.002)		-0.009*** (0.001)
<i>Year 2020 × Woman × Public employer</i>		-0.004 (0.002)		0.002 (0.002)
<i>March–Dec × Woman</i>		0.006*** (0.001)		-0.002* (0.001)
<i>March–Dec × Public employer</i>		-0.021*** (0.001)		-0.010*** (0.001)
<i>March–Dec × Woman × Public employer</i>		0.010*** (0.002)		0.0004 (0.001)
<i>Intercept</i>	3.446*** (0.001)	3.563*** (0.001)	0.820*** (0.0004)	0.822*** (0.001)
Observations	14,486,400	14,486,400	25,913,805	25,913,805
Adjusted R ²	0.002	0.041	0.0004	0.001

Note: *p<0.05; **p<0.01; ***p<0.001.

form of full-pay temporary jobs or long-term low-pay jobs. We cannot separate between these two in our data as we do not observe hours or hourly wages.

The unconditional quantile regression results in figure 10 present graphically how the pandemic affected earnings across the distribution. The strong positive gradient reported in the previous sections is confirmed by the quantile regressions. The largest decreases are recorded in the bottom of the distribution and the top of the distribution is almost unaffected by the pandemic in terms of its earnings level. Marginal effects vary from -0.068 in the 10th quantile to -0.012 in the 99th quantile. The effects are precisely estimated with exception for the 99th quantile, probably reflecting the smaller number

Figure 10: Non-linear earnings effects of the pandemic.

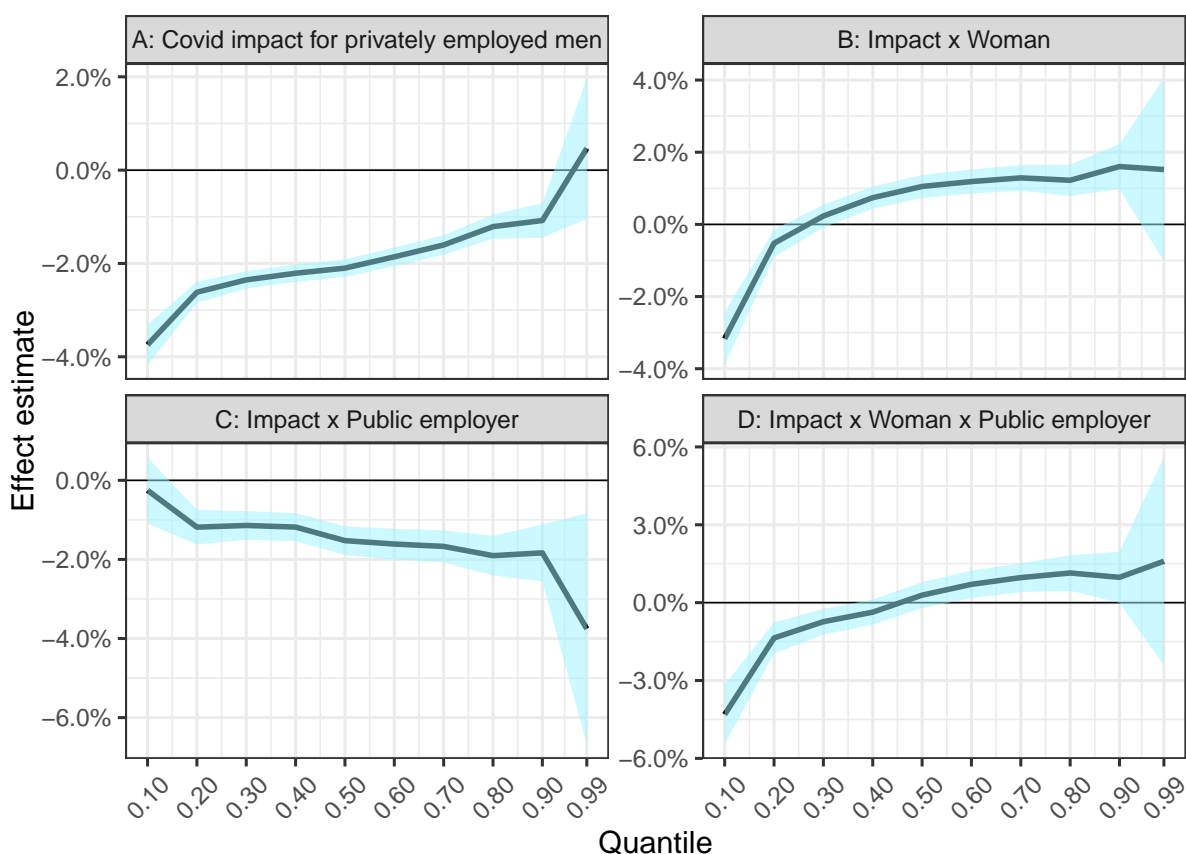


Note: Unconditional quantile regression estimation using the method of Firpo et al. (2008, 2018).

of observations and higher variance of earnings. This said, there is a striking monotonicity in the crisis effect difference across quantiles, confirming the regressive nature of the COVID-19 pandemic seen in previous sections.

In figure 11, we run the unconditional quantile regressions across public-/private-sector and male/female employees (but with quantiles defined over the entire population). In the reference category (panel A), men in the private sector, we find the monotonically decreasing negative impact of the pandemic over the earnings distribution. Panel B shows the relative effect of women in the private sector compared with men in the private sector. At a particular quantile, a negative value in panel B means that the effect among women is lower than among men. While the relative impact on women is negative in the lower part of the distribution, the effect varies in earnings and actually turns out to be positive for women in the 40–90 quantile. Among men employed in the public sector (panel C), the relative crisis effect is negative compared to the effect among men in the private sector for all except the 10th quantile, where it is not statistically different from zero. Finally, among women in the public sector (panel E), the relative effect shows considerable heterogeneity across the earnings distribution: it is strongly negative in the first quartile up to the 30th quantile, positive between the 60th and 80th percentiles, and virtually zero elsewhere in the distribution. Taken together, these results indicate notable non-linearities in the earnings impact of the pandemic and considerable effect heterogeneity with respect to sectors and gender.

Figure 11: Non-linear pandemic effects: Group-specific patterns.



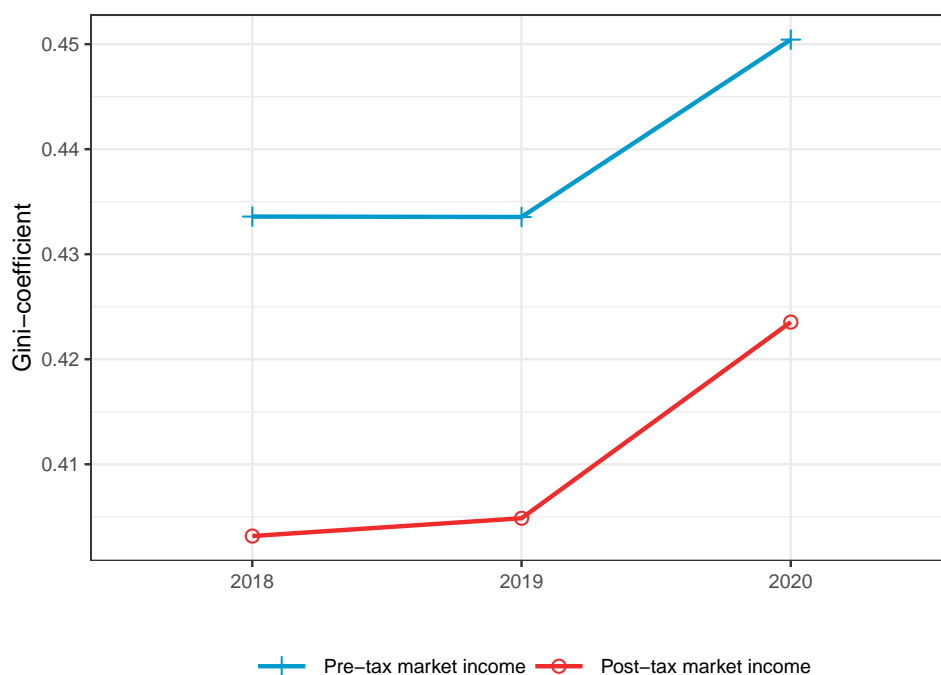
Note: Unconditional quantile regression estimation using the method of Firpo et al. (2008, 2018).

6 Market income inequality during the pandemic

This section shifts focus from monthly earnings in the working population to annual incomes in the entire adult population. Instead of analyzing pre-tax wages and salaries, we now analyze the sum of labor income, pensions, other taxable transfers (unemployment and sickness insurance income), self-employment income and capital income (interests, dividends, realized capital gains), everything either before or after subtracting all taxes paid. Standard terminology denotes this income concept *market income* and we compute its distributional characteristics in the individual adult (18+) population.

Figure 12 shows how the pre- and post-tax Gini-coefficient has changed over the period 2018–2020. The pre-tax values have been calculated on market income, and the post-tax values on market income minus the individuals' final tax amount for the income year. The results for market income confirm the previously shown results for monthly labor earnings (Figure 3): the Gini-coefficient has increased in 2020. In percentage terms,

Figure 12: Gini-coefficient based on market income.



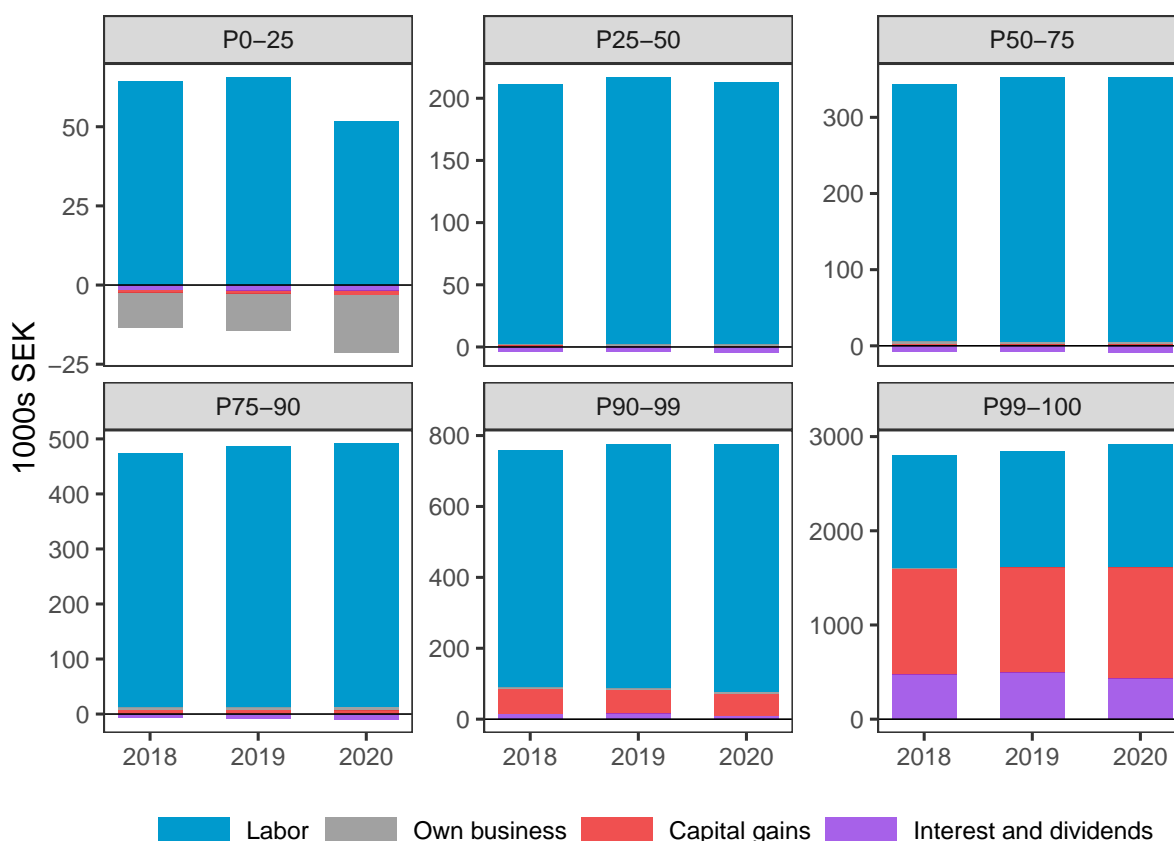
Note: Market income includes labor earnings and pension, income from own businesses (i.e., sole proprietorships), and capital income.

the post-tax Gini has increased more than the pre-tax value (increases with 4.6% and 3.9%, respectively). One reason for this difference might be a income tax policy change which was effectual starting from the income year of 2020, whereby a previously existing state income tax of 5% above a certain income threshold was removed.¹⁹

In order to see whether the Gini-coefficient increase is primarily driven by income changes at the top or in the lower tail of the distribution, in Figure 13, we show how the average market income has changed over time by percentile group. This figure also shows a decomposition of market income into income from labor, business and capital income (interest and dividends, and realized capital gains). From this picture, it is clear that the Gini-coefficient increase is primarily driven by a considerable drop in market income at the bottom: for individuals below the lower quartile, market income was stable at about 50,000 SEK (about 5,000 EUR) during 2018 and 2019 and fell dramatically to about 30,000 SEK (3,000 EUR) in 2020. As this group comprises a quarter of the population, this market income drop of about 40% is clearly the main mechanism behind the large increase in the Gini-coefficient. In the top one percent, average market income increased by about 3%, through increased labor income and capital gains, but the relatively small increase and the tiny population share means that this contributes marginally to the overall inequality increase.

¹⁹In 2019, the threshold was in effect 703,000 SEK or about 7,030 EUR.

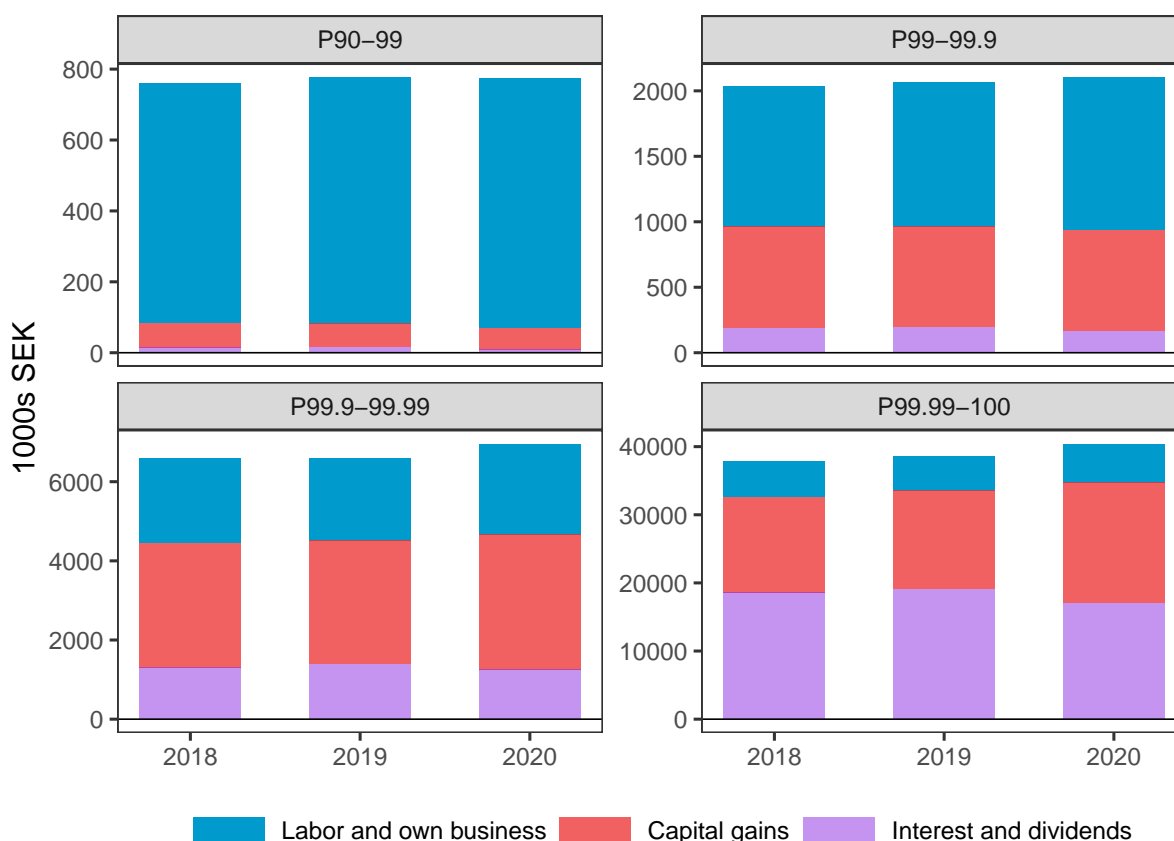
Figure 13: Annual market income and its composition, 2018–2020.



Note: Market income includes labor earnings and pension, income from own businesses (sole proprietorships), and capital income.

In Figure 14, we zoom in at the top in order to investigate whether there is evidence that the 3%-increase is driven by a few extreme incomes at the very top, or by a general increase in the entire top one percent. The evidence from the figure points to a general market income increase in all sub-populations of the top percent, including P99-P99.9. However, the nature of the increase differs between the groups. While the lower nine-tenths of the top percentile exhibits mainly a labor income increase, the top 0.1 percentile group has its increase coming from increased realized capital gains.

Figure 14: Annual market income at the top of the market income distribution.



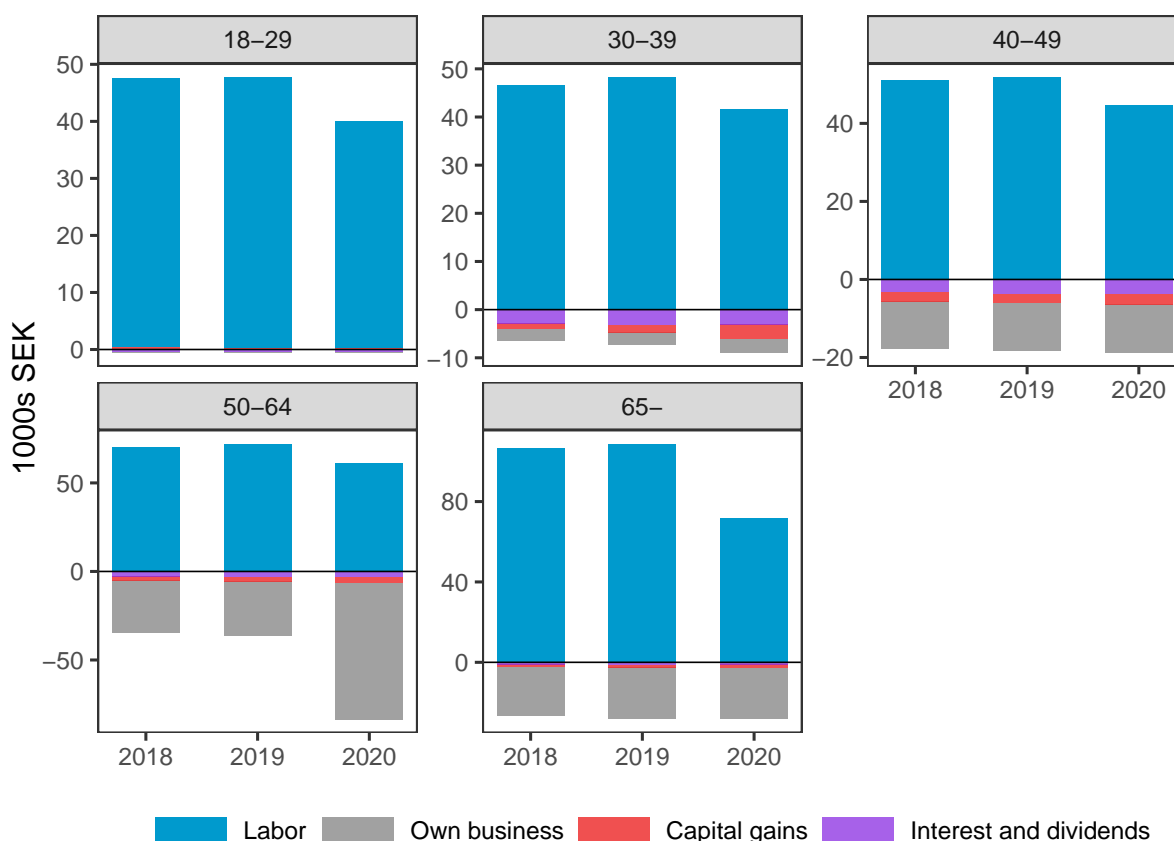
Note: Market income includes labor earnings and pension, income from own businesses (i.e., sole proprietorships), and capital income.

6.1 What is going on in the lower tail?

Repeatedly throughout this study, we have found evidence showing that individuals in the lower end of the income distribution were those hit most severely by the pandemic crisis. Looking back at the previous figures, this was true for average monthly earnings (top left panel of Figure 2), the unemployment shock (left panel in Figure 8), and yearly market income (top left panel in Figure 13). Although these separate analyses have been broadly consistent, it is hard drawing conclusions about potential mechanisms from each analysis separately. In this subsection, we bring together these findings and attempt to distinguish between different potential mechanisms using some additional results. To this end, we investigate individuals with income below the lower quartile along two dimensions: age (for all outcomes) and income source (for market income). Broadly speaking, we attempt to answer the following question: Which age groups were hit the most, and how – via increased unemployment or an income loss conditional on having a job?

We start with annual market income. Figure 15 shows the various income sources of market income for individuals below the lower quartile (P0-25) by age group. The figure does not show any considerable within-group changes between 2018 and 2019. During

Figure 15: Annual market income across age groups in the bottom quartile (P0–25).



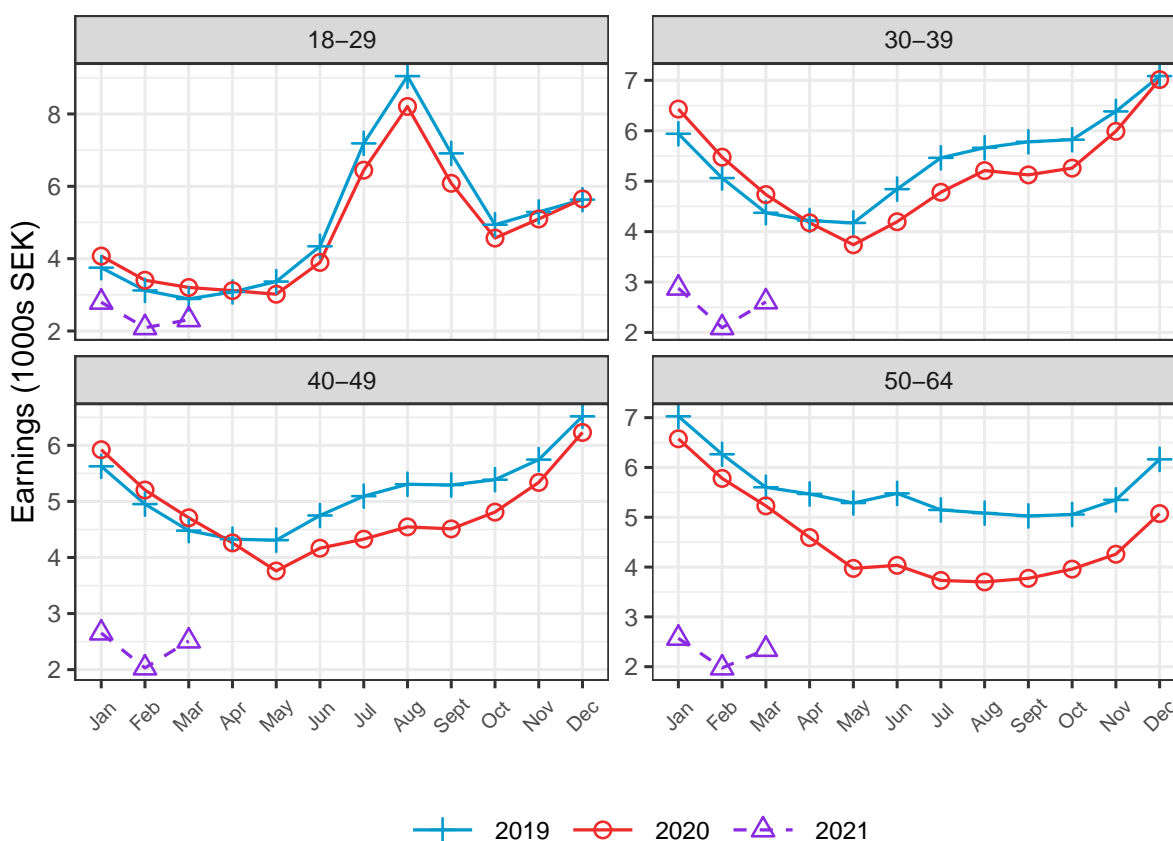
Note: The figure shows P0–25 in the pre-tax market income distribution. Market income includes labor earnings and pension, income from own businesses (sole proprietorships), and capital income (realized capital gains, interest and dividends).

2020, two things seem to happen: labor and pension earnings drop for all groups and most for the youngest and oldest, and the negative net income from own businesses more than doubles in the age group 50 to 64. This large drop in is not unexpected during a year of crisis, but we find it intriguing that it is so clearly concentrated in this particular age group. Although there is an under-representation of those in the age group 50 to 64 relative to the young and elderly²⁰, they still constitute 13% of the total number of individuals in P0–25. The large drop in income from own businesses thus remains an important explanation for the market income drop in P0–25 during the pandemic.

The fall in annual labor income reported on tax returns could be due to unemployment, fewer work hours, or a drop in the wage rate for instance due to a new lower-paid job. Unfortunately, the structure of these data does not allow us to observe these factors directly. Instead, we turn back to the monthly earnings dataset, and split up the lowest earnings quartile group into the same age groups as above. Figure 16 shows that earnings decreased in all age groups during 2020. The largest drop is found among the

²⁰In terms of number of individuals, the relative sizes of the groups starting from the youngest and finishing with the oldest are 36%, 15%, 10%, 13% and 26%, respectively.

Figure 16: Monthly labor earnings across age groups in the bottom quartile (P0–25).



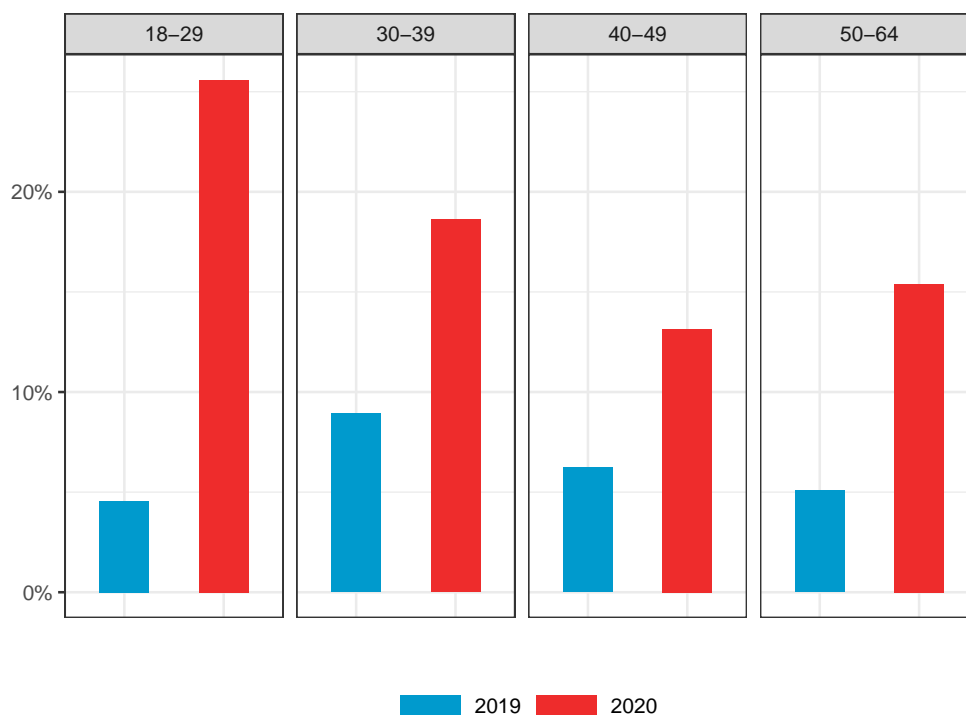
Note: The figure shows individuals in the P0–25 group in the monthly earnings distribution.

50–64 year-old, which is also the age group that was hit hardest with respect to income from own business in Figure 15.²¹ Furthermore, for this group, we see a downward income shift also before COVID-19, that is, already in January and February 2020.

As a final analysis, we examine the large unemployment shocks among workers in the P0-P25 quantile group to see how it is distributed across the age groups. This is reported in Figure 17. Starting with the share of individuals with positive earnings during January-February 2019 but who were unemployed (that is, had zero earnings) during March-December the same year, we see some variation across age groups. The shares are about 5% among the youngest and oldest, 6% among those between 40 and 49 years old and 9% in the 30-39-group. Looking at the corresponding numbers for 2020 clearly shows that the youngest group has been hit hardest by the pandemic: the share without any earnings during March-December 2020 who had earnings during January-February is above 25%, which is more than five times as high as during the pre-COVID year. The second-highest share of unemployed can be found among the oldest group (just above 15%).

²¹It should be kept in mind that the percentile thresholds in both figures are from different distributions.

Figure 17: Unemployment shocks across age groups in the bottom quartile (P0–25).



Note: The figure shows the share of individuals in the P0–25 group in the monthly earnings distribution that went from being employed during January-February to being unemployed during March-December in 2019 and 2020, respectively.

Summing up the analysis of bottom incomes with respect to age patterns, a relatively clear picture emerges. A main finding of the paper is that the increased income disparities during the pandemic are mainly driven by a considerable income drop in the lower tail of the distribution. Within this tail, we find that labor earnings dropped in all age groups (but possibly the most among people above 50), that unemployment has increased in all age groups (but clearly most among the youngest), and that income from own businesses has contributed to the income fall (but the losses are confined to the 50-64-group).

7 Concluding remarks

We have used Swedish full-population register data to measure the distributional impact of the COVID-19 pandemic. The registers cover monthly labor earnings, annual incomes and the firm and individual records of government COVID-19 support. Combining these population-wide registers with almost real-time updating appears to be a unique contribution to the rapidly growing literature analyzing the real and distributional effects of the COVID-19 pandemic.

Our main finding is that the pandemic has increased income inequality among individuals. This results holds for pre- and post-tax labor earnings, before and after government support, and for annual total market incomes that also include capital income, taxable transfers and all taxes paid. Personal labor earnings as a whole contracted by 3-4 percent, but most of this contraction was concentrated to the lower half of the earnings distribution. The main channel for this earnings contraction seems to be a cancellation of short-term, low-paying private-sector jobs; we record a threefold increase in unemployment among these workers after the outbreak of the pandemic.

The Swedish government's COVID-19 support was paid out to 80,000 firms and more than half a million workers. We find that without the government support, total earnings would have dropped by 5-7 percent, almost twice as much, during the pandemic, and earnings inequality would have increased up to three times as much as what actually happened.

Comparing the Swedish results with previous findings for other countries, an interesting difference arises. The other studies find that the effect of the pandemic on income inequality switches sign after the government support is accounted for. While the "pure" pandemic effect as such is to increase inequality, the progressive profile of the support money makes inequality decrease as a whole. Exactly why these findings differ from ours is yet to be explored.

References

- Almeida, V., Barrios, S., Christl, M., De Poli, S., Tumino, A., and van der Wielen, W. (2021). The Impact of COVID-19 on Households' Income in the EU. *Journal of Economics Inequality*, forthcoming.
- Alvaredo, F. (2011). A Note on the Relationship between Top Income Shares and the Gini Coefficient. *Economic Letters*, 110:274–277.
- Angelov, N. and Waldenström, D. (2021). The Impact of COVID-19 on Economic Activity: Evidence from Administrative Tax Registers. *Working Paper*.
- Blundell, R., Costa Dias, M., Joyce, R., and Xu, X. (2020). COVID-19 and Inequalities. *Fiscal Studies*, 41:291–319.
- Clark, A. E., D'Ambrosio, C., and Lepinteur, A. (2021). The Fall in Income Inequality During COVID-19 in Four European Countries. *Journal of Economics Inequality*, forthcoming.
- Firpo, S., Fortin, Lemieux, N. M., and Thomas (2008). Unconditional Quantile Regression. *Econometrica*, 77:953–973.
- Firpo, S., Fortin, Lemieux, N. M., and Thomas (2018). Decomposing Wage Distributions Using Recentered Influence Function Regression. *Econometrics*, 6:1–40.
- Gottschalk, P. and Smeeding, T. (2000). *Handbook of Income Distribution*, chapter Empirical Evidence on Income Inequality in Industrialized Countries, pages 261–307. Cambridge, MA: Cambridge University Press.
- IMF (2021). *Fiscal Monitor April 2021*, Washington D.C.
- O'Donoghue, C., Sologon, D. M., Kyzyma, I., and McHale, J. (2020). Modelling the Distributional Impact of the COVID-19 Crisis. *Fiscal Studies*, 41:321–336.
- Rognlie, M. (2015). Deciphering the Fall and Rise in the Net Capital Share: Accumulation or Scarcity? *Brookings Papers on Economic Activity*, pages 1–54.
- Stantcheva, S. (2021). Inequalities in the Times of the Pandemic. *Economic Policy*, forthcoming.

A Appendix

Table A1: The distribution of monthly pre-tax earnings in Sweden 2020

Threshold	Monthly income level	Fractile	Number of taxpayers	Average monthly income
		P0-100	5,396,585	28.2
		P0-25	1,349,142	4.8
P25	13.8	P25-50	1,349,147	21.9
P50	27.8	P50-75	1,349,141	32.4
P75	37.6	P75-90	809,495	42.5
P90	49.3	P90-99	485,694	61.6
P99	95.9	P99-99.9	48,569	126.0
P99.9	220.0	P99.9-99.99	4,857	311.1
P99.99	592.0	P99.99-100	540	1,022.3

Notes: Earnings are expressed in 1000s SEK. *Source:* The monthly payroll tax register at the Swedish Tax Agency.

Table A2: The distribution of annual pre-tax market income in Sweden 2020

Threshold	Yearly market income	Fractile	Number of taxpayers	Average yearly market income
		P0-100	8,280,140	316.6
		P0-25	2,070,033	30.1
P25	137.9	P25-50	2,070,037	207.8
P50	276.1	P50-75	2,070,031	343.5
P75	415.2	P75-90	1,242,023	481.9
P90	576.4	P90-99	745,214	774.9
P99	1,410.1	P99-99.9	74,521	2,103.5
P99.9	4,369.4	P99.9-99.99	7,452	6,959.5
P99.99	16,233.2	P99.99-100	829	40,427.5

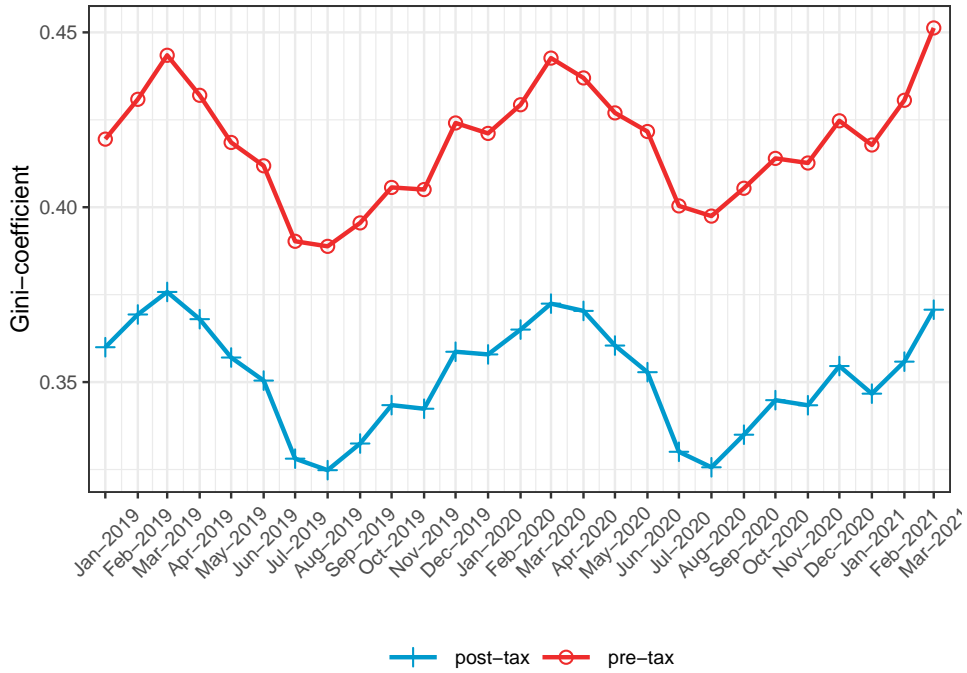
Notes: Market income is expressed in 1000s SEK and consists of labor income, income from own businesses, and capital income before taxes. *Source:* The annual personal tax return register at the Swedish Tax Agency.

Table A3: Short-term Work Allowance (STWA): Distribution of the costs borne for the work-time reduction

Level	Reduction in work time	Costs borne:		
		Workers (reduced salary)	Firms (extra wage cost)	Government (STWA)
1	20%	4%	1%	15%
2	40%	6%	4%	30%
3	60%	7.5%	7.5%	45%
4	80%	12%	8%	60%

Note: The table shows the statutory rules in 2020 for work-time reduction and costs for this borne by employees, employers and the government within the STWA support policy. The 80% work-time reductions (Level 4) were only available in May-July 2020.

Figure A1: Pre- and post-tax Gini-coefficient



Note: Post-tax earnings is calculated as the difference between pre-tax labor earnings and the amount of withheld tax. This amount can in some cases be negative since withheld tax is paid also for other income sources than labor earnings. Negative calculated values of post-tax income (approximately 5 % of the observations) have been removed in the calculation of the Gini-coefficient.

Table A4: Effect estimates of COVID-19 effects on monthly wages: Various specifications

	<i>Dependent variable:</i>							
	log(w)	log(w)	log(w)	log(w)	1[w>0]	1[w>0]	1[w>0]	1[w>0]
	(1)	(2)	(3)	(4)	(5)	(6)	(7)	(8)
<i>Covid impact</i>	-0.038*** (0.0005)	-0.033*** (0.001)	-0.026*** (0.001)	-0.025*** (0.001)	-0.014*** (0.0003)	-0.013*** (0.0005)	-0.024*** (0.0004)	-0.020*** (0.001)
<i>Impact × Woman</i>		-0.010*** (0.001)		-0.008*** (0.001)		-0.001 (0.001)		-0.012*** (0.001)
<i>Impact × Public</i>			-0.016*** (0.001)	-0.012*** (0.002)			0.028*** (0.001)	0.029*** (0.001)
<i>Impact × Woman × Public</i>				-0.003 (0.002)				0.004* (0.002)
<i>Year 2020</i>	0.062*** (0.0005)	0.053*** (0.001)	0.064*** (0.001)	0.055*** (0.001)	0.002*** (0.0004)	0.003*** (0.0005)	0.005*** (0.0004)	0.005*** (0.001)
<i>Mar-Dec</i>	0.049*** (0.0003)	0.047*** (0.0004)	0.053*** (0.0004)	0.051*** (0.0005)	0.023*** (0.0002)	0.025*** (0.0003)	0.026*** (0.0003)	0.027*** (0.0004)
<i>Woman</i>		-0.188*** (0.001)		-0.192*** (0.002)		0.007*** (0.001)		-0.004*** (0.001)
<i>Public employer</i>			-0.122*** (0.001)	-0.106*** (0.002)			-0.003*** (0.001)	-0.024*** (0.001)
<i>Woman × Public</i>				0.063*** (0.003)				0.034*** (0.001)
<i>2020 × Woman</i>		0.019*** (0.001)		0.024*** (0.001)		-0.001 (0.001)		0.001 (0.001)
<i>2020 × Public</i>			-0.006*** (0.001)	-0.012*** (0.002)			-0.008*** (0.001)	-0.009*** (0.001)
<i>2020 × Woman × Public</i>				-0.004 (0.002)				0.002 (0.002)
<i>Mar-Dec × Woman</i>		0.005*** (0.001)		0.006*** (0.001)		-0.004*** (0.0005)		-0.002* (0.001)
<i>Mar-Dec × Public</i>			-0.013*** (0.001)	-0.021*** (0.001)			-0.010*** (0.0005)	-0.010*** (0.001)
<i>Mar-Dec × Woman × Public</i>				0.010*** (0.002)				0.0004 (0.001)
<i>Intercept</i>	3.446*** (0.001)	3.534*** (0.001)	3.495*** (0.001)	3.563*** (0.001)	0.820*** (0.0004)	0.816*** (0.0005)	0.821*** (0.0004)	0.822*** (0.001)
Observations	14,486,400	14,486,400	14,486,400	14,486,400	25,913,805	25,913,805	25,913,805	25,913,805
Adjusted R ²	0.002	0.032	0.021	0.041	0.0004	0.0005	0.001	0.001

Note: *p<0.05; **p<0.01; ***p<0.001.