

DISCUSSION PAPER SERIES

DP15796

(v. 4)

Reparations and Persistent Racial Wealth Gaps

Job Boerma and Loukas Karabarbounis

LABOUR ECONOMICS

MACROECONOMICS AND GROWTH

PUBLIC ECONOMICS

CEPR

Reparations and Persistent Racial Wealth Gaps

Job Boerma and Loukas Karabarbounis

Discussion Paper DP15796
First Published 10 February 2021
This Revision 13 May 2022

Centre for Economic Policy Research
33 Great Sutton Street, London EC1V 0DX, UK
Tel: +44 (0)20 7183 8801
www.cepr.org

This Discussion Paper is issued under the auspices of the Centre's research programmes:

- Labour Economics
- Macroeconomics and Growth
- Public Economics

Any opinions expressed here are those of the author(s) and not those of the Centre for Economic Policy Research. Research disseminated by CEPR may include views on policy, but the Centre itself takes no institutional policy positions.

The Centre for Economic Policy Research was established in 1983 as an educational charity, to promote independent analysis and public discussion of open economies and the relations among them. It is pluralist and non-partisan, bringing economic research to bear on the analysis of medium- and long-run policy questions.

These Discussion Papers often represent preliminary or incomplete work, circulated to encourage discussion and comment. Citation and use of such a paper should take account of its provisional character.

Copyright: Job Boerma and Loukas Karabarbounis

Reparations and Persistent Racial Wealth Gaps

Abstract

We analyze the magnitude and persistence of the racial wealth gap using a long-run model of heterogeneous dynasties with an occupational choice and bequests. Our innovation is to introduce endogenous beliefs about risky returns, reflecting differences in dynasties' investment experiences over time. Feeding the exclusion of Black dynasties from labor and capital markets into the model as the only driving force, we find that the model quantitatively reproduces current and historical racial gaps in wealth, income, entrepreneurship, mobility, and beliefs about risky returns. We explore how the future trajectory of the racial wealth gap might change in response to various policies. Wealth transfers to all Black dynasties that eliminate the average wealth gap today do not lead to long-run wealth convergence. The logic is that centuries-long exclusions lead Black dynasties to hold pessimistic beliefs about risky returns and to forgo investment opportunities after the wealth transfer. Investment subsidies toward Black entrepreneurs are more effective than wealth transfers in permanently eliminating the racial wealth gap.

JEL Classification: E21, D31, J15

Keywords: reparations, Race Gaps, wealth, entrepreneurship, beliefs

Job Boerma - boerm002@umn.edu
University of Minnesota

Loukas Karabarbounis - loukas@umn.edu
University of Minnesota and CEPR

Reparations and Persistent Racial Wealth Gaps*

Job Boerma

University of Wisconsin-Madison

Loukas Karabarbounis

University of Minnesota, FRB of Minneapolis, NBER, and CEPR

May 2022

Abstract

We analyze the magnitude and persistence of the racial wealth gap using a long-run model of heterogeneous dynasties with an occupational choice and bequests. Our innovation is to introduce endogenous beliefs about risky returns, reflecting differences in dynasties' investment experiences over time. Feeding the exclusion of Black dynasties from labor and capital markets into the model as the only driving force, we find that the model quantitatively reproduces current and historical racial gaps in wealth, income, entrepreneurship, mobility, and beliefs about risky returns. We explore how the future trajectory of the racial wealth gap might change in response to various policies. Wealth transfers to all Black dynasties that eliminate the average wealth gap today do not lead to long-run wealth convergence. The logic is that centuries-long exclusions lead Black dynasties to hold pessimistic beliefs about risky returns and to forgo investment opportunities after the wealth transfer. Investment subsidies toward Black entrepreneurs are more effective than wealth transfers in permanently eliminating the racial wealth gap.

JEL-Codes: E21, D31, J15

Keywords: Racial Gaps, Wealth, Risky Returns, Beliefs, Reparations.

*The views expressed herein are those of the authors and not necessarily those of the Federal Reserve Bank of Minneapolis or the Federal Reserve System. The authors declare no conflicts of interests and no funding related to this study.

1 Introduction

According to data from the Survey of Consumer Finances (SCF), average wealth of Black households equals only 15 percent of average wealth of White households. In response to such a large, and persistent throughout history, racial wealth gap various scholars and policymakers have put on the table the proposal of paying reparations to Black households. The logic underlying such proposals is that persistent racial wealth gaps do not reflect innate differences in ability, preferences, or beliefs but instead emerge from centuries-long exclusions of Black dynasties from labor and capital markets.¹

We provide a first formal, dynamic economic analysis of the historical origins of the racial wealth gap and an initial evaluation of various reparation proposals. Our analysis aims to answer two related sets of questions. First, under the assumption of no innate racial differences in ability, preferences, or beliefs, to what extent can we account for the magnitude and persistence of the racial wealth gap when feeding into our model the history of exclusions that prevented Black households from participating in labor and capital markets? Second, will reparations today, in the form of direct wealth transfers to Black households, eliminate the racial wealth gap in the long run? If not, is there a policy that is effective in eliminating the racial wealth gap?

We answer these questions in three steps. We begin by developing a long-run equilibrium model with heterogeneous dynasties to quantify the sources of racial gaps in wealth, income, entrepreneurship, and mobility. The model shares two features with the wealth inequality literature (which we discuss further below). Motivated by the role of intergenerational transfers for persistence in wealth gaps, dynasties in our model choose how to allocate their resources between consumption for the current generation and wealth transmitted to descendants. Motivated by the observation that the top of the wealth distribution consists mostly of entrepreneurs, dynasties choose how to allocate their lifetime between labor and risky investment activities.

¹In April 2019, Senator Booker introduced a bill to “address the fundamental injustice, cruelty, brutality, and inhumanity of slavery in the United States and the 13 American colonies between 1619 and 1865 and to establish a commission to study and consider a national apology and proposal for reparations for the institution of slavery...” While most policymakers have not explicitly endorsed wealth transfers to descendants of slaves yet, prominent cosponsors of the bill expressed their support to study reparations and make policy recommendations. The bill is available at <https://bit.ly/3oyNG9p>. Prominent cosponsors include Vice President Harris and Senators Klobuchar, Sanders, and Warren.

The innovation of our framework, relative to the wealth inequality literature, is that it generates an endogenous divergence of beliefs about risky investment returns. Entrepreneurship uses time and capital as inputs and produces uncertain output. The true return from investment is unknown and each generation begins with a prior belief over the objective probability that investment activities are successful. Dynasties that become capitalists observe their investment outcome, update their beliefs, and transmit them to the next generation. Successful capitalists transmit more optimistic beliefs to their descendants, unsuccessful capitalists transmit more pessimistic beliefs to their descendants, while laborers do not update their beliefs since they lack investment experiences of their own. Thus, the dispersion of expected risky returns reflects differences in the accumulation of investment experiences from previous generations. This mechanism generates poverty traps, as generations with lower wealth tend to become laborers and pass more pessimistic beliefs to their descendants, who, in turn, also tend to become laborers and to realize lower wealth.²

We feed as driving forces into the model historical labor and capital exclusions that prohibit Black dynasties from participating in markets. By labor market exclusions, we mean both slavery, taking place in our model between the Declaration of Independence in 1776 and the 13th Amendment in 1865, and discrimination that results in lower wages for Black dynasties until today. By capital market exclusions, we mean historical events such as discrimination in patenting, redlining, Jim Crow segregation laws, and exclusion from credit markets. In our model, these policies exclude Black dynasties from becoming capitalists until the Civil Rights Movement in the 1960s.

In the second step, we parameterize the model to evaluate its ability to account quantitatively for salient features of the data. The model is successful in accounting for the significant dispersion of wealth and income observed in the data, both for the total population and for the population of entrepreneurs. While not targeted by our parameterization, the model matches the racial wealth gap today and its evolution since the early 1900s. Notably, the model is consistent with the observation that a large racial wealth gap still persists despite some convergence in wages. In addition,

²An example we use to illustrate model mechanisms is the Rockefeller dynasty. When asked how the Rockefellers have managed to preserve wealth over centuries, David Rockefeller Jr., chairman of Rockefeller & Co., stated (<https://cnb.cx/2YwePiE>) that the family has developed a system of values, traditions, and institutions that have helped the family stay together and preserve its wealth. The family meets twice per year in a forum where heirs talk about the family's direction, projects, and other news related to careers or important milestones.

the model is consistent with observed income mobility patterns, where White dynasties are more likely than Black dynasties to see their children exceed their rank in the income distribution. Similar to the one in the data, the mobility gap in the model is more profound in the early 1900s than in recent times.

The model generates significant racial wealth gaps because Black dynasties earn lower wages than White dynasties. This disparity in turn leads to racial differences in holdings of both safe and risky assets. When White dynasties have positive investment experiences, they update upward their beliefs about risky returns and accumulate wealth over time. Black dynasties initially faced slavery and later face lower wages. They do not become capitalists, meaning that they do not update their beliefs and do not accumulate as much wealth as White dynasties. To corroborate this mechanism, we show that the model is consistent with the observed contribution of gaps in holdings of risky assets to the racial wealth gap in the SCF, when risky assets include investments such as public equity, own business assets, and real estate.

Confronted with historical labor and capital market exclusions, the model generates racial gaps without imposing differences in preferences, initial beliefs, or initial wealth. We highlight the importance of general equilibrium for the divergence of wealth. Early on, when Black dynasties are enslaved, investment returns are high because assets (such as land) are relatively unexploited. This makes risky investments worthwhile for White dynasties even if, initially, their beliefs are pessimistic and their wealth is low. As wealth in the economy accumulates, returns fall over time, and their decline dissuades Black dynasties from becoming capitalists even after emancipation.³

The model generates a racial gap in entrepreneurship and beliefs about risky returns in response to the same historical exclusions that prevented Black dynasties from participating in markets and accumulating as much wealth as White dynasties. We first confirm the known observation that Black households are less likely to be entrepreneurs than White households. We then evaluate whether model predictions concerning beliefs about risky returns align with available data. Using Michigan Survey data asking respondents their probability assessment of whether a diversified equity fund would increase in value, we present new evidence that Black households are more

³Consistent with our mechanism, [Kuvshinov and Zimmermann \(2021\)](#) document a decline in U.S. expected risky returns since 1890 and [Schmelzing \(2020\)](#) documents a decline in long-term U.S. yields since the late 18th century.

pessimistic than White households about risky returns. Despite not being targeted by the parameterization, the model generates a racial belief gap and dispersion of beliefs similar to those observed in the data.

Armed with a model that is consistent with salient observations on wealth, income, entrepreneurship, mobility, and beliefs, we perform various policy experiments to understand the predictions of the model for future racial gaps. We first clarify how we evaluate different reparation policies and why we are interested in their effects on future racial gaps. Our framework subscribes to the logic underlying reparations that persistent racial gaps do not reflect innate differences in ability, preferences, or beliefs but instead emerge from centuries-long exclusions of Black dynasties from labor and capital markets. Our criterion when evaluating reparations is that they compensate appropriately for historical exclusions only if they restore the outcomes we would have observed in a world without these exclusions. Reparation policies today that do not eliminate the racial gaps in the future do not compensate appropriately, because in the absence of exclusions outcomes for Black and White dynasties are identical.

We evaluate reparation policies in terms of whether they achieve equal representation of Black dynasties in wealth, which is the outcome we would observe in the absence of historical exclusions. We are interested in the effects of reparations on wealth, because in our model more than half of the racial welfare gap is accounted for by differences in wealth as opposed to differences in wages. To separate the wealth effects of reparations from the wealth effects of different wages, we assume that labor market policies are enacted to permanently close the racial wage gap at the time when reparations are given.

Our first policy experiment shows that with transfers that eliminate the racial gap in average wealth today, the average wealth of Black dynasties and that of White dynasties diverge again in the future, Black dynasties are strongly underrepresented at the top of the wealth distribution, and the racial welfare gap persists.⁴ Historical labor and capital market exclusions lead Black dynasties

⁴We calculate transfers to Black dynasties that total 10 trillion dollars and consider progressive and proportional wealth taxes on White dynasties that finance these transfers. Wealth transfers are the most commonly discussed reparation policy (Darity and Mullen, 2020). The long-run equalization of average wealth is viewed as a goal from proponents of reparations. For example, Darity and Mullen in their discussion of reparations (<https://brook.gs/3j1soQs>) argue that “*The wealth gap will not persist if the target of well-executed reparations is direct elimination of it.*”

to enter into the reparations era with more pessimistic beliefs about risky returns than White dynasties. Since this era is also characterized by a relatively low return to wealth accumulation, most Black dynasties forgo investment opportunities, despite increased wealth.

Racial outcomes differ in the long run, even with larger transfers that make the average Black dynasty significantly wealthier than the average White dynasty today. Wealth transfers are not powerful in changing the trade-off between labor and capital activities. A policy that targets directly this trade-off is investment subsidies, which are more effective than wealth transfers in compensating Black dynasties for historical exclusions. A subsidy equal to 27 percentage points of additional return, financed with taxation of White dynasties' wealth at 100 percent above roughly 17 million dollars, eliminates racial gaps in the long run. Another possibility for closing racial gaps is that after reparations, Black capitalists update their beliefs by learning from others' experiences. This possibility, however, raises the question of why learning from others' experiences did not occur earlier in history, thus leading to today's gap in wealth and entrepreneurship.

This paper contributes to three literatures. Early work by [Blau and Graham \(1990\)](#) concludes that racial differences in intergenerational transfers account for most of the racial wealth gap.⁵ [Quadrini \(2000\)](#) and [Cagetti and De Nardi \(2006\)](#) demonstrate the importance of entrepreneurship for wealth inequality, as entrepreneurs occupy most of the top of the wealth distribution. [Benhabib, Bisin, and Zhu \(2011\)](#) stress the role of capital income risk for the upper tail of the wealth distribution, while [Benhabib, Bisin, and Luo \(2019\)](#) show that accounting for both inequality and mobility requires a combination of stochastic earnings, heterogeneity in saving rates, and capital income risk. [Gabaix, Lasry, Lions, and Moll \(2016\)](#) show the importance of correlated returns with wealth for the fast transitions of tail inequality in the data. Our innovation relative to the wealth inequality literature is to introduce dispersion of expected returns. Unlike models that treat entrepreneurial productivity as an exogenous process, our model has differences in expected returns that emerge endogenously from accumulated investment experiences.⁶

⁵Quantitative work on wealth inequality, such as [De Nardi \(2004\)](#), highlights the role of bequests and non-homothetic preferences for the emergence of large estates and the transmission of wealth across generations. Non-homothetic preferences allow models to account for the observation that households with higher lifetime income ([Dynan, Skinner, and Zeldes, 2004](#); [Straub, 2019](#)) or higher wealth ([Fagereng, Holm, Moll, and Natvik, 2019](#)) exhibit higher saving rates.

⁶Consistent with our model that generates a positive correlation between wealth and expected returns, [Bach,](#)

A natural prediction of models with occupational choice is that wealth transfers lead to a rise in recipients' entrepreneurship rates and wealth relative to non-recipients. However, [Bleakley and Ferrie \(2016\)](#) present historical evidence from a large wealth redistribution program, Georgia's Cherokee Land Lottery in 1832 that shows that descendants of families who received wealth transfers did not experience higher education, income, and wealth than descendants of non-recipients. [Bleakley and Ferrie \(2016\)](#) conclude that financial resources play a limited role in intergenerational outcomes compared with other factors which may persist through family lines. This other factor in our model is beliefs about risky investment returns. If beliefs were homogeneous, a one-time wealth transfer would perfectly eliminate the racial wealth gap forever. Owing to the more pessimistic beliefs of Black dynasties at the time of reparations, our model instead predicts divergence of wealth after transfers.

The second related literature concerns social capital and the transmission of culture. [Fogli and Veldkamp \(2011\)](#) study the transition of women into the labor force in a model of learning by sampling from a small number of other women. As information about the effects of maternal employment on children accumulates, the effects of maternal employment become less uncertain and more women enter into the labor force. [Fernandez \(2013\)](#) demonstrates the role of cultural transmission of beliefs about wages for women's rising labor force participation. The transmission of beliefs across generations reflects both parental beliefs and a noisy observation of aggregate labor force participation. [Buera, Monge-Naranjo, and Primiceri \(2011\)](#) develop and estimate a model in which a country's past experiences and those of its neighbors shape policymakers' beliefs about the desirability of free market policies.

Our baseline learning mechanism differs from some of these papers because dynasties learn about risky returns based only on their own experiences. Earlier work such as [Piketty \(1995\)](#) highlights the role of learning from own mobility experiences for voters' attitudes on redistribution. Similar to the model of [Piketty \(1995\)](#), in which experimenting is unattractive, and the cultural

[Calvet, and Sodini \(2020\)](#) use asset pricing models to document that households with higher wealth exhibit higher expected returns. While a novel part of our model is heterogeneity in expected returns, the model is also consistent with "scale dependence," as emphasized by [Gabaix, Lasry, Lions, and Moll \(2016\)](#), because wealthier dynasties are more likely to be capitalists and realize higher ex post returns. [Fagereng, Guiso, Malacrino, and Pistaferri \(2020\)](#) document a positive correlation of ex post returns with wealth and, consistent with our model, persistence of returns across generations.

transmission model of [Guiso, Sapienza, and Zingales \(2008\)](#), in which learning occurs only upon participation, our model features persistent heterogeneity in beliefs as some dynasties do not enter into entrepreneurship.⁷ We extend the baseline model to discuss learning from others' experiences and show that strengthened networks help close racial gaps.

The cultural transmission of family characteristics in our model relates to the work of [Doepke and Zilibotti \(2008\)](#). The authors develop a model with endogenous preference formation and occupational segregation to study the replacement of the British aristocracy by capitalists who rose from the middle class. The model of [Doepke and Zilibotti \(2008\)](#) features reversals of economic outcomes across generations. These occur because capitalists teach their children to appreciate leisure, anticipating that they will rely on capital income, while middle-class parents teach their children stronger work ethics and patience. Our model instead features persistence of wealth and poverty traps which are consistent with the lack of wealth convergence across races over the past two centuries.

Finally, our work contributes to the racial gaps literature. [Darity and Frank \(2003\)](#) narrate centuries-long exclusions of Black dynasties from labor and capital markets and offer proposals for the implementation of reparations.⁸ [Aliprantis, Carroll, and Young \(2019\)](#) and [Ashman and Neumuller \(2020\)](#) use quantitative models to show how racial income gaps generate racial wealth gaps. Given differences in labor earnings, these models generate divergence of wealth after one-time transfers. By contrast, our model predicts wealth diverges after one-time transfers even if we eliminate forever the labor earnings gap. [Hsieh, Hurst, Jones, and Klenow \(2019\)](#) demonstrate that removing labor market exclusions of Black workers increases aggregate productivity by improving the allocation of talent across occupations. Like these authors' model, our model does not feature differential changes in innate abilities by race over time and removes labor market exclusions at the time of reparations. Unlike [Hsieh, Hurst, Jones, and Klenow \(2019\)](#) who do not consider wealth

⁷In our model, learning depends directly on own investment experiences and indirectly on the aggregate risky return. In their study of perceptions of intergenerational mobility, [Alesina, Stantcheva, and Teso \(2018\)](#) offer evidence that individuals who have experienced upward mobility in their own life are more optimistic about mobility. In the context of forming inflation expectations, [Malmendier and Nagel \(2016\)](#) present evidence that individuals put more weight on personal experiences than on other available historical data, especially following periods of volatile inflation.

⁸We confront quantitatively the model with historical evidence on racial gaps in wealth, wages, and mobility from [Higgs \(1982\)](#) and [Margo \(1984\)](#), [Margo \(2016\)](#), and [Collins and Wanamaker \(2017\)](#).

accumulation, we are interested in how the racial wealth gap emerged from historical events and how it will evolve after reparations.

Recent work on racial gaps includes [Brouillette, Jones, and Klenow \(2021\)](#) who quantify welfare differences over time and [Derenoncourt, Kim, Kuhn, and Schularick \(2022\)](#) who document and analyze historical wealth differences. Our approach differs from these papers in that we develop an equilibrium model that generates endogenously racial differences in saving rates and wealth returns. The benefit of this approach is that we explain how racial gaps in welfare and wealth emerged and that we allow racial gaps to respond endogenously to policies such as reparation transfers or investment subsidies.

Our conclusion that reparations in the form of transfers do not eliminate the racial wealth gap in the long run is reminiscent of the conclusion of [Loury \(1977\)](#) for labor market policies aiming to equalize racial outcomes. [Loury \(1977\)](#) argues that equal opportunity policies may not completely eliminate racial inequality, because labor market outcomes also depend on accumulated social capital and networks that disadvantage Black households. The parallel between our paper and the paper of [Loury \(1977\)](#) is that equalizing wealth in our model does not suffice to eliminate the racial wealth gap in the future, because at the time of reparations Black dynasties have accumulated fewer positive investment experiences from their network.

2 Model

We present the model and characterize its equilibrium. We then discuss key mechanisms through an example.

2.1 Environment

The economy is populated by a continuum of heterogeneous dynasties indexed by $\iota \in [0, 1]$. The horizon is infinite and periods $t = 1, 2, \dots$ represent the economic life for a generation within a dynasty. We denote by Φ_t the distribution of dynasties in period t .

Demographics. Dynasty ι in period t has size $N_{\iota t}$. The evolution of $N_{\iota t}$ is given by

$$N_{\iota t+1} = (1 + n_{\iota t+1})N_{\iota t}, \tag{1}$$

where n_{t+1} is the population growth rate of dynasty ι between periods t and $t + 1$. The total population is $N_t = \int N_{it} d\Phi_t$ and the population growth rate is $n_{t+1} \equiv N_{t+1}/N_t - 1$.

Technology. The model features an occupational choice between labor and capital, motivated by the observation that the majority of households at the top of the wealth distribution are entrepreneurs. Each generation within a dynasty is endowed with one unit of time. Generations allocate fraction $1 - k_{it}$ of their lifetime to a safe technology, which we call labor, and fraction k_{it} to a risky technology, which we call capital or entrepreneurship. The allocation of time $k_{it} \in [0, 1]$ is continuous.

The safe technology produces labor income from working and non-labor income from saving in a risk-free asset. Dynasties that allocate fraction $1 - k_{it}$ of their time to the safe technology earn income:

$$(z_{it} + i_t a_{it})(1 - k_{it}), \tag{2}$$

where z_{it} is the wage and i_t is the safe return on assets a_{it} , both taken as given by dynasties.

Operating the risky technology requires time and dynasties that allocate time k_{it} to entrepreneurial activities forgo labor income. Entrepreneurship is risky, as k_{it} is chosen before an idiosyncratic investment shock is realized. Allocating time k_{it} produces capital income:

$$\begin{aligned} r_t a_{it} k_{it}, & \quad \text{if } e_{it} = G, \\ 0, & \quad \text{if } e_{it} = B. \end{aligned} \tag{3}$$

Capital income depends on the realization of an idiosyncratic event e_{it} . If the dynasty's experience is good, $e_{it} = G$, entrepreneurship yields a net return r_t per unit of assets invested a_{it} . If the dynasty's experience is bad, $e_{it} = B$, entrepreneurship yields a net return of zero. The return r_t is determined in equilibrium and also taken as given.

Beliefs. Our modeling innovation is to introduce heterogeneity in beliefs about risky investment returns. Dynasties do not know the objective probability of a good experience, which we denote by $q^* = \mathbb{P}(e_{it} = G)$. This probability is common across dynasties and constant over time. Dynasties learn about q^* from events they experience when they are capitalists.

Each dynasty ι begins period t with a prior belief, $\pi_{\iota t}(q)$, over the probability that risky investment activities are successful, q^* . The belief induces a subjective expectation of a good event, $\mathbb{E}_{\iota t}q^* = \int q\pi_{\iota t}(q)dq$. As we illustrate below, this expectation partly determines the choice to become a capitalist.

Capitalists, $k_{\iota t} > 0$, update their prior belief following their experiences using Bayes's rule:

$$\pi_{\iota t+1}(q) = \begin{cases} \pi_{\iota t}(q)\frac{q}{\mathbb{E}_{\iota t}q^*}, & \text{if } e_{\iota t} = G, \\ \pi_{\iota t}(q)\frac{1-q}{\mathbb{E}_{\iota t}(1-q^*)}, & \text{if } e_{\iota t} = B. \end{cases} \quad (4)$$

Following a good experience, $e_{\iota t} = G$, the posterior belief that q^* equals q , $\pi_{\iota t+1}(q)$, equals the prior belief, $\pi_{\iota t}(q)$, multiplied by the likelihood of experiencing a good event, q , divided by the probability of occurrence of a good event, $\mathbb{E}_{\iota t}q^*$. Dynasties with good experiences increase their belief about probabilities that exceed their prior mean of a good experience. Conversely, following a bad experience, $e_{\iota t} = B$, dynasties lower their belief about probabilities that exceed their prior mean of a good experience.

Capitalists, $k_{\iota t} > 0$, pass their posterior beliefs on to their children, who begin the next period with prior $\pi_{\iota t+1}$. Laborers, $k_{\iota t} = 0$, do not accumulate risky investment experiences and, therefore, do not update their prior, $\pi_{\iota t+1} = \pi_{\iota t}$. Beliefs in our model are martingale, $\mathbb{E}_{\iota t}\pi_{\iota t+1}(q) = \pi_{\iota t}(q)$. Therefore, beliefs converge to the truth in the long run, $\lim_{t \rightarrow \infty} \pi_{\iota t}(q) = 0$ for $q \neq q^*$, but only conditional on being a capitalist.

In our model, dynasties learn from their own experiences only if they become capitalists. This feature is similar to the learning assumption of [Piketty \(1995\)](#) in his model of income mobility. We think this is a natural benchmark, partly because it allows the model to generate persistence in returns and wealth. In [Section 4.3](#), we consider alternative assumptions under which dynasties also learn from the experiences of other dynasties.

Timing. The timing of events in each period is as follows:

1. Dynasty ι begins period t with state $(z_{\iota t}, a_{\iota t}, \pi_{\iota t}(q), n_{\iota t+1}, T_{\iota t})$, where $z_{\iota t}$ is the wage, $a_{\iota t}$ is assets, $\pi_{\iota t}(q)$ is the prior belief about the probability the good event is q , $n_{\iota t+1}$ is the growth rate of the size of the dynasty, and $T_{\iota t}$ is transfers.

2. Dynasties choose the fraction of time spent on capital activities k_{it} before e_{it} is realized.
3. Dynasties experience e_{it} and realize income y_{it} .
4. Dynasties choose consumption c_{it} and transmit assets a_{it+1} and posterior beliefs π_{it+1} to the next generation $it + 1$.

Preferences and budget. The model is analytically tractable because each generation has preferences over their own consumption c_{it} and over assets bequeathed per child a_{it+1} . The utility function is

$$U = \frac{(c_{it} - \bar{c}_t)^{1-\gamma} - 1}{1-\gamma} + \beta^\gamma \frac{a_{it+1}^{1-\gamma} - 1}{1-\gamma}, \quad (5)$$

where parameter $\gamma \geq 0$ governs the curvature of the utility function for consumption and bequests and the discount factor $\beta > 0$ governs the preference for bequests relative to consumption.

Preferences are non-homothetic, with $\bar{c}_t > 0$ denoting the subsistence level of consumption. We motivate non-homothetic preferences with the observation that households with higher lifetime income (for example, [Dynan, Skinner, and Zeldes, 2004](#); [Straub, 2019](#)) and wealth (for example, [Fagereng, Holm, Moll, and Natvik, 2019](#)) exhibit higher saving rates, leading to increased wealth inequality (for example, [De Nardi and Fella, 2017](#)). In our quantitative analysis, \bar{c}_t allows the model to generate the low share of wealth held by the bottom half of the population.

The budget constraint of each generation is

$$c_{it} + (1 + n_{it+1})a_{it+1} = y_{it}(k_{it}, e_{it}) + (1 - \delta)a_{it}, \quad (6)$$

where $(1 + n_{it+1})a_{it+1}$ is resources saved to transfer a_{it+1} to each member of the next generation and δ is the depreciation rate of assets. Income y_{it} is a function of the allocation of time k_{it} and the realization of experience e_{it}

$$y_{it}(k_{it}, e_{it}) = \begin{cases} T_{it} + (z_{it} + i_t a_{it})(1 - k_{it}) + r_t a_{it} k_{it}, & \text{if } e_{it} = G, \\ T_{it} + (z_{it} + i_t a_{it})(1 - k_{it}), & \text{if } e_{it} = B, \end{cases} \quad (7)$$

where T_{it} are transfers.

Interpretation of wealth, return heterogeneity, and risky investments. We interpret a_{it} as net worth from all assets minus liabilities, including public equity, business assets, bonds,

durables, and housing, as is consistent with our model, in which wealth derives from both safe and risky investments. The ex-post net return on wealth for dynasty ι at time t is

$$p_{it} = \begin{cases} r_t k_{it} + i_t(1 - k_{it}) - \delta, & \text{if } e_{it} = G, \\ i_t(1 - k_{it}) - \delta, & \text{if } e_{it} = B. \end{cases} \quad (8)$$

Equation (8) shows that there are two sources of ex-post return heterogeneity across dynasties. Heterogeneity arises because of luck, as dynasties can experience either a good or a bad event e_{it} . Heterogeneity also arises endogenously from portfolio composition, as dynasties choose to direct a different fraction of investments k_{it} toward risky assets and the risky return r_t differs from the safe return i_t .⁹

Our modeling of risky investments is consistent with two aspects of the data that we discuss below. In Section 3.3.1, we use the SCF to document that holdings of private business assets and public equity are quantitatively the most important drivers for the racial wealth gap. This finding is consistent with our model, in which risky investment activities amplify the racial gap in average wealth. Further, in Section 3.3.5, we document the existence of a racial gap in beliefs about returns on a diversified equity fund, which directly maps to expected risky returns $\mathbb{E}_{it} q^* r_t$.

2.2 Dynasty Optimization

We solve the dynasty problem backwards. In the last stage, the solution for consumption and assets, given income level y_{it} , is

$$c_{it} = \bar{c}_t + \omega_{it+1}(y_{it} + (1 - \delta)a_{it} - \bar{c}_t), \quad (9)$$

$$a_{it+1} = \frac{1 - \omega_{it+1}}{1 + n_{it+1}}(y_{it} + (1 - \delta)a_{it} - \bar{c}_t), \quad (10)$$

with weight $\omega_{it+1} \equiv \frac{(1+n_{it+1})^{\frac{1-\gamma}{\gamma}}}{(1+n_{it+1})^{\frac{1-\gamma}{\gamma}} + \beta}$. The solutions are constant elasticity of substitution demand functions, augmented to account for subsistence consumption. Each generation allocates a fraction ω_{it+1} of its resources net of subsistence consumption to consumption above this subsistence level. Remaining resources are passed to the next generation in the form of assets. Because each

⁹Recent work by [Kermani and Wong \(2021\)](#) on housing documents that rate of returns may differ for reasons other than luck and portfolio composition. Adding exogenous differences in returns to our environment, for example by assuming that r_t is higher for White dynasties than for Black dynasties, would increase even more the racial wealth gap.

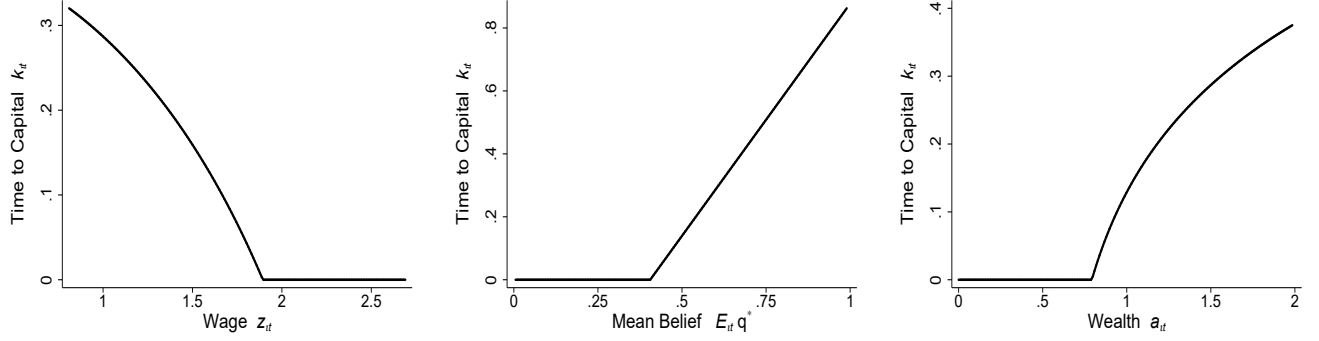


Figure 1: Policy Functions

generation is succeeded by $1 + n_{t+1}$ members, an increase in population growth reduces the resources transferred per member of the next generation. The consumption weight ω_{t+1} varies with population growth when $\gamma \neq 1$. With log utility, $\gamma \rightarrow 1$, the weight is independent of population growth and is inversely related to the discount factor, $\omega_{t+1} = 1/(1 + \beta)$.

Working backwards, we solve for the allocation of time k_{it} using the optimal choice of consumption and assets in the last stage. Dynasties maximize expected utility

$$V = \max_{k_{it}} \int \left(qU^*(y_{it}(k_{it}, G)) + (1 - q)U^*(y_{it}(k_{it}, B)) \right) \pi_{it}(q) dq, \quad (11)$$

where U^* is indirect utility given income $y_{it} = y_{it}(k_{it}, e_{it})$. The expectation is formed under the probability distribution π_{it} . The solution for time allocated to capital is

$$k_{it} = \begin{cases} 0, & \text{if } r_t a_{it} \leq z_{it} + i_t a_{it}, \text{ or } \mathbb{E}_{it} q^* r_t a_{it} \leq z_{it} + i_t a_{it}, \\ \left(1 + \frac{T_{it} + (1 - \delta)a_{it} - \bar{c}_t}{z_{it} + i_t a_{it}} \right) \left(\frac{\left[\frac{\mathbb{E}_{it} q^*}{1 - \mathbb{E}_{it} q^*} \left(\frac{r_t a_{it}}{z_{it} + i_t a_{it}} - 1 \right) \right]^{\frac{1}{\gamma}} - 1}{\left[\frac{\mathbb{E}_{it} q^*}{1 - \mathbb{E}_{it} q^*} \left(\frac{r_t a_{it}}{z_{it} + i_t a_{it}} - 1 \right) \right]^{\frac{1}{\gamma}} - 1 + \frac{r_t a_{it}}{z_{it} + i_t a_{it}}} \right), & \text{otherwise,} \end{cases} \quad (12)$$

with $k_{it} = 1$ if the expression in the last line exceeds one.

Figure 1 presents the policy functions for k_{it} . Our model includes two channels affecting the decision to become a capitalist. The first is wealth, captured by a_{it} , and the second is relative factor returns, captured by the expected return $\mathbb{E}_{it} q^* r_t$ relative to the wage z_{it} . Dynasties with sufficiently high wage z_{it} , low assets a_{it} , or pessimistic beliefs about returns $\mathbb{E}_{it} q^* r_t$ become laborers, $k_{it} = 0$. Conditional on a dynasty becoming capitalists, k_{it} increases in assets and expected returns and decreases in the wage.

2.3 Asset Market

The return to risky investments, r_t , adjusts to clear the asset market:¹⁰

$$N_t \int (1 + n_{it+1}) a_{it+1}(\cdot, r_t) d\Phi_t = \bar{A}_{t+1}/r_t^\alpha. \quad (13)$$

The left-hand side of this equation is total desired assets given a return r_t . Desired assets increase in r_t because a higher return induces more dynasties to become capitalists and to transfer more assets to their children. The supply of assets has to meet a limit on investment opportunities, given by the right-hand side of equation (13). Parameter $\alpha \geq 0$ governs the magnitude of the decline in returns as wealth accumulates. In the limiting case with $\alpha = 0$, assets are in fixed supply (for example, land) and r_t adjusts to make assets equal to the exogenous constant \bar{A}_{t+1} . In the other limiting case with $\alpha \rightarrow \infty$, the return to risky investment is exogenous as in a small open economy. For intermediate cases, $0 < \alpha < \infty$, the equilibrium return and assets are jointly determined as in standard closed-economy general equilibrium models.

2.4 Labor and Capital Market Exclusions

We treat labor and capital market exclusions as exogenous driving forces and feed them to the model in a time-varying way that we specify in the quantitative part of our analysis. In modelling these exclusions, we distinguish between Black dynasties b and White dynasties w . Black dynasties are a fraction ϕ_t of the population. We denote by Φ_t^h the distribution of dynasties $h \in \{b, w\}$ conditional on race.

We use the term “labor market exclusion” to refer to slavery and the racial wage gap. Slavery, which we indicate by $\chi_t^\ell = 1$, forces Black dynasties to be laborers, consume subsistence consumption, and not transfer resources to their children:

$$k_{it}^b = 0, \quad c_{it}^b = \bar{c}_t, \quad a_{it+1}^b = 0. \quad (14)$$

During slavery, production of Black dynasties in excess of subsistence consumption is expropriated

¹⁰The demand for safe assets is perfectly elastic, implying an exogenous return i_t . In our quantitative results we set i_t to a constant, but the results are not sensitive to feeding in the time-varying return from [Jordà, Knoll, Kuvshinov, Schularick, and Taylor \(2019\)](#).

and evenly distributed among White dynasties:

$$(1 - \phi_t)T_{it}^w = \chi_t^\ell \phi_t \int (z_{it} - \bar{c}_t) d\Phi_t^b. \quad (15)$$

The racial wage gap means that Black dynasties draw wages from a distribution with a mean lower than the mean of the distribution of White dynasties, $\mathbb{E}z_{it}^b < \mathbb{E}z_{it}^w$.¹¹

Capital market exclusions, which we indicate by $\chi_t^k = 1$, capture events such as discrimination in patenting, redlining, Jim Crow segregation laws, and exclusion from credit markets.¹² In our model, capital market exclusions prohibit Black dynasties from becoming capitalists:

$$k_{it}^b = 0. \quad (16)$$

2.5 Equilibrium

We conclude the description of the economy with the definition of equilibrium. Given an initial distribution over assets, beliefs, and population size by race, $\Phi_1^h(a_1, \pi_1, N_1)$, exogenous dynasty sequences $\{z_{it}, e_{it}, n_{it+1}\}_{it}$, and exogenous aggregate sequences $\{\bar{A}_t, i_t, \chi_t^\ell, \chi_t^k\}_t$, an equilibrium is a sequence of dynasty choices and beliefs $\{k_{it}, y_{it}, c_{it}, a_{it+1}, \pi_{it+1}\}_{it}$ and a return to risky investments $\{r_t\}_t$ such that (i) dynasties maximize their expected utility in equation (11) under uncertainty about e_{it} and maximize their utility in equation (5) after e_{it} is realized; (ii) beliefs are consistent with Bayes's rule in equation (4); (iii) the asset market in equation (13) clears; and (iv) the expropriation rule in equation (15) is satisfied.

2.6 Illustrative Example

The goal of the example is to show the mechanism by which labor market exclusions generate wealth divergence and to highlight the role of equilibrium effects in amplifying this divergence.

¹¹Our model focuses on physical capital accumulation and does not explicitly consider human capital accumulation. We believe that human capital can be analyzed similar to physical capital, as our model would predict that centuries of exclusions lead Black dynasties to underinvest in human capital and to have more pessimistic beliefs about schooling returns.

¹²Cook (2014) uses patent records matched with census data and other survey data from the U.S. Patent Office to argue that the decline in Black patents occurred in areas with higher incidence of race riots and segregation laws between 1870 and 1940. Fairlie, Robb, and Robinson (2020) present evidence from the Kauffman Firm Survey that Black startups face more difficulty raising external capital. Even controlling for credit scores and net worth, Black entrepreneurs are significantly more likely than White entrepreneurs to report fear of denial as the reason for not applying for loans.

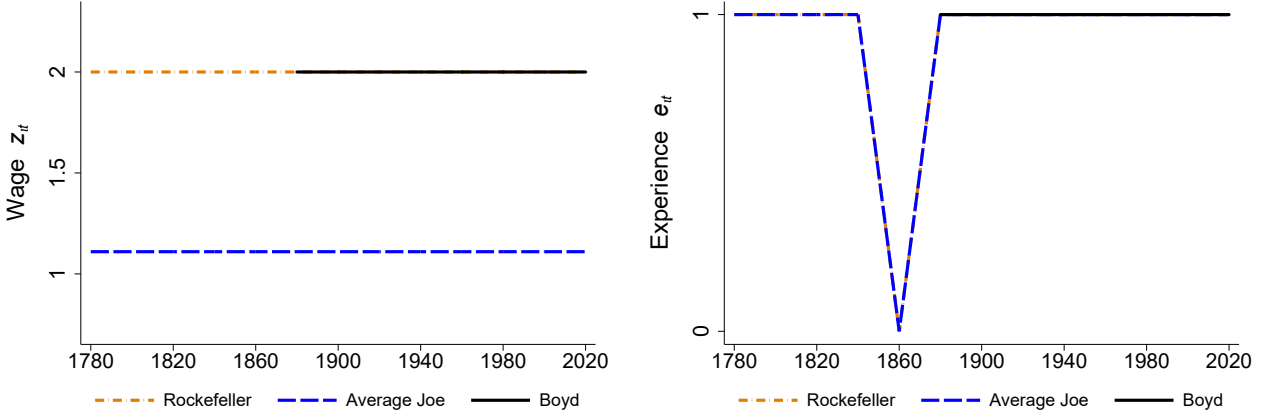


Figure 2: Wages and Entrepreneurial Experiences

Figure 2 presents historical realizations for three illustrative dynasties. The first, which we label the *Rockefeller* dynasty represented by the orange dot-dashed line, is White and always has high wage z_{it} . The second, which we label the *Average Joe* dynasty represented by the blue dashed line, is White and has lower z_{it} . The third, which we label the *Boyd* dynasty represented by the black solid line, has as high z_{it} as Rockefeller but is Black and hence enslaved between 1780 and 1860. All dynasties are identical in terms of their potential investment experiences e_{it} in the right panel. We feed the realizations of z_{it} and e_{it} into the analytical solutions of Section 2.2 to generate the dynasties' evolution of occupational choice, beliefs, and wealth.¹³

Figure 3 narrates the history of the dynasties in partial equilibrium. By partial equilibrium, we mean the case with $\alpha \rightarrow \infty$ and thus a constant risky return r_t . Beginning with the Rockefeller dynasty, we see that by 1840 it has accumulated sufficient wealth to become capitalists. In 1860, during the Civil War, Rockefeller has a negative experience that discourages entrepreneurship until 1940. Thereafter, the Rockefeller dynasty continues to have positive investment experiences,

¹³While some readers may be familiar with Rockefeller, we suspect the story of Henry Boyd is not well known among economists. Boyd was born into slavery in 1802 in Kentucky and later was apprenticed out to a cabinetmaker. Boyd was very skilled and earned money to buy his freedom. He moved to Cincinnati in 1826 as a free man, but faced discrimination finding a job. His first job was to unload iron and eventually he was promoted to janitor. According to historical accounts, one day a white carpenter showed up drunk at work and Boyd substituted. Impressing his boss, Boyd earned enough money as a carpenter to buy the freedom of two of his siblings and open up his own business. Unable to patent his bed frame invention, he stamped bedsteads with his name and eventually partnered with a white business man. While Boyd expanded his business, arsonists burned his shop three times and companies denied him insurance, resulting in business closure in 1862. In the early 1990s, Boyd's estate in Cincinnati was torn down and turned into a garage. See <https://bit.ly/3iULZBY> and <https://bit.ly/2Ny8AII> for some original sources on these historical accounts.

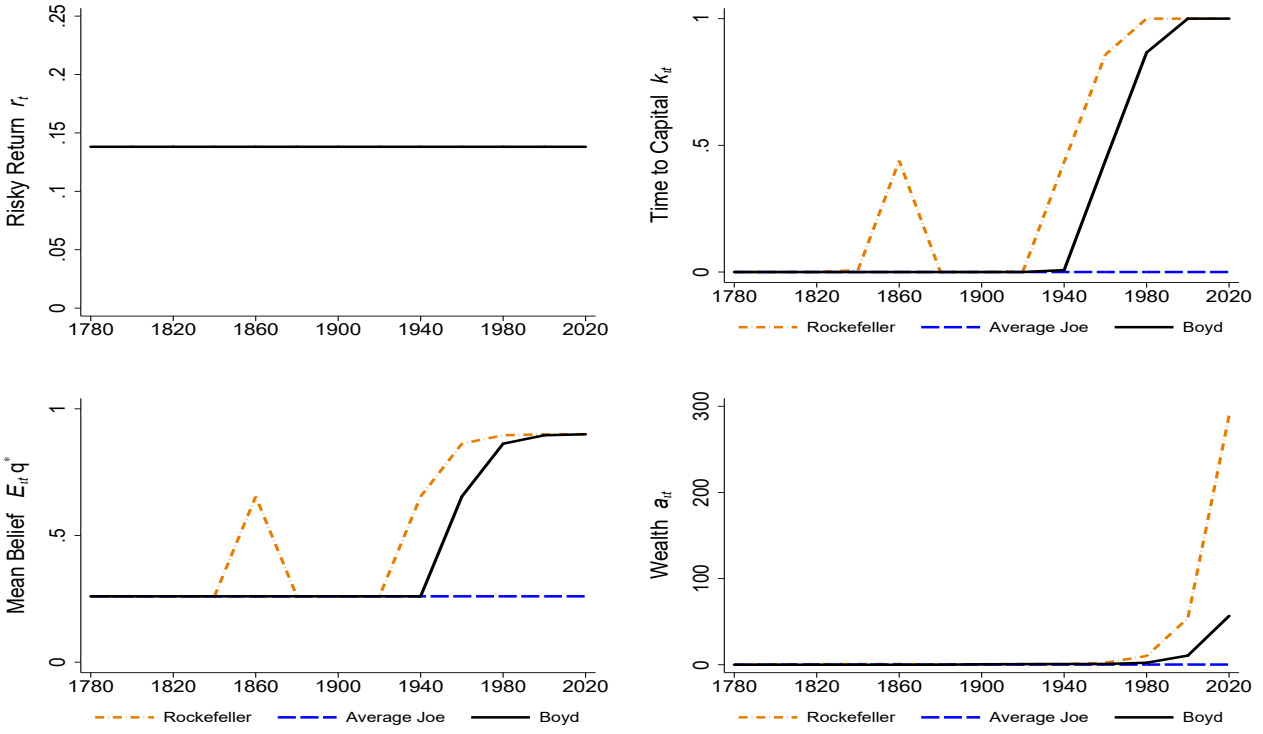


Figure 3: Illustrative Example in Partial Equilibrium

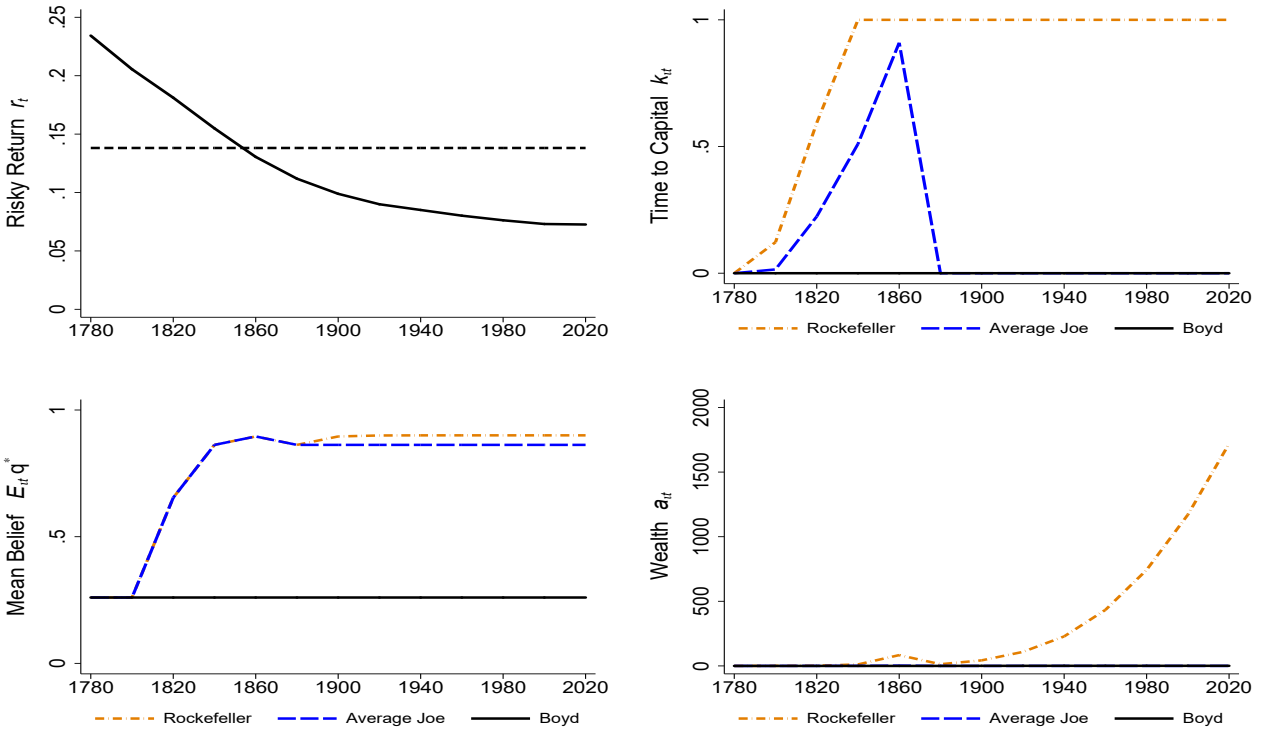


Figure 4: Illustrative Example in General Equilibrium

resulting in its beliefs converging to the truth and a significant accumulation of wealth. Average Joe differs from Rockefeller because the dynasty never accumulates enough wealth to make entrepreneurship worthwhile. Average Joe remains a laborer, does not update beliefs, and ends up with low wealth. Boyd is initially enslaved and prohibited from building wealth. In partial equilibrium, Boyd eventually catches up with Rockefeller, becomes a capitalist, updates beliefs toward the truth, and accumulates wealth.

The evolution of occupational choice and wealth is different in general equilibrium, as shown in Figure 4. By general equilibrium, we mean the case with $\alpha < \infty$ and, thus, a declining risky return r_t .¹⁴ General equilibrium generates different predictions, as slavery early on coincides with higher return, while the abolition of slavery coincides with lower return. Owing to the high initial return, Rockefeller becomes capitalist earlier in general equilibrium than in partial equilibrium. Good experiences encourage continued investments and wealth accumulation throughout history. Given high initial returns, even Average Joe becomes capitalist. However, after the bad experience of 1860, its wealth and the return are sufficiently low to discourage the dynasty from further investment activity. The Boyd dynasty never catches up with Rockefeller in general equilibrium, despite having the same wage. In general equilibrium, the return on risky investments is low after the abolition of slavery, discouraging Boyd from becoming capitalist and from accumulating wealth.

Equilibrium effects, through which returns on wealth accumulation during slavery are higher than returns in recent times, discourage Black dynasties from becoming capitalists. An example of an asset captured by the general equilibrium model is land, which was initially unexploited and offered high returns. The absence of early positive investment experiences for Black dynasties leads them to have more pessimistic beliefs about risky investments than White dynasties and causes a more persistent racial divergence of wealth than would occur if returns were constant.

We conclude by previewing the logic of why, in our model, a one-time transfer may not lead to wealth convergence in the future even if it eliminates the racial wealth gap today. Figure 5

¹⁴Kuvshinov and Zimmermann (2021) document a decline in expected risky returns for many countries, including the United States, since 1890. The 2 percentage points decline in r_t during the 20th century in Figure 4 is quantitatively consistent with the decline in expected returns documented by these authors.

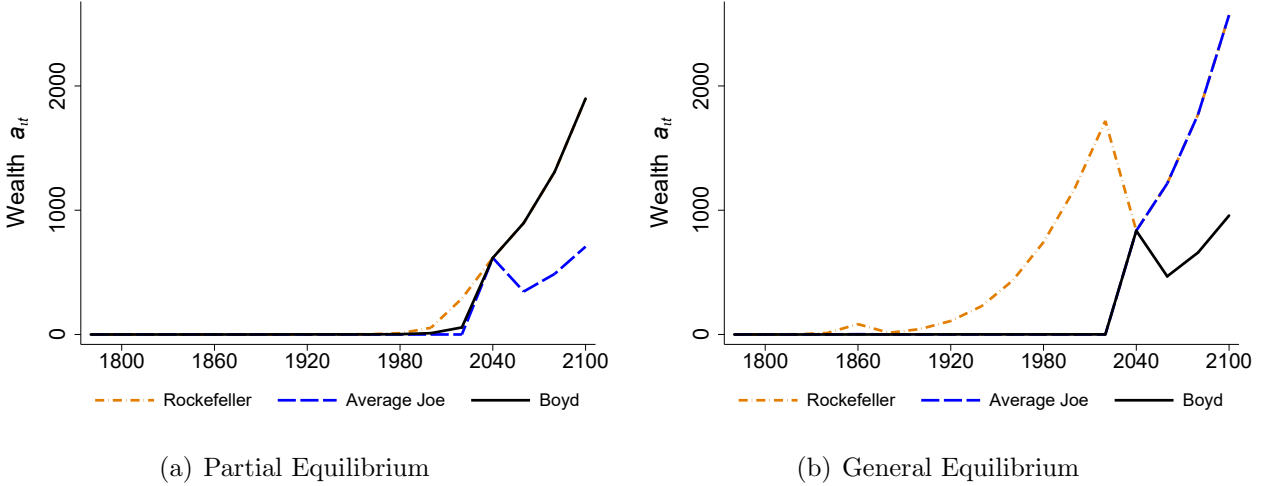


Figure 5: Wealth Transfers in the Illustrative Example

shows the evolution of wealth for the three dynasties following a redistribution of wealth that eliminates wealth inequality in 2040. In partial equilibrium, Boyd accumulates as much wealth as Rockefeller after reparations. In general equilibrium, beginning in 2060, Boyd’s wealth falls behind White dynasties’ wealth. This result can be understood in terms of the policy function for the choice of capital in equation (12), which we summarize as $k(z, a, \mathbb{E}q^*; r)$. Despite having equal wage z and assets a with Rockefeller in 2040, relatively pessimistic beliefs $\mathbb{E}q^*$ and the relatively low return r lead Boyd to choose labor and forgo the opportunity to invest. By contrast, given optimistic beliefs, White dynasties continue to be capitalists. As a result, wealth for the two types of dynasties diverges forever.

3 Quantitative Results

We first describe inputs to the model and the parameterization strategy. Next, we evaluate the ability of the model to account for racial gaps in wealth, income, entrepreneurship, mobility, and beliefs, none of which are targeted by the parameterization. Finally, we present welfare analyses and counterfactuals when removing labor and capital market exclusions and changing structural features of the economy.

Table 1: Population and Wages

	Population Growth		Wages			
	White	Black	Agg. Growth	Racial Gap	Persistence	Dispersion
	$(1 + n^w)^{\frac{1}{20}} - 1$	$(1 + n^b)^{\frac{1}{20}} - 1$	$(1 + g)^{\frac{1}{20}} - 1$	μ^b	ρ	σ
1780	3.40	2.81	0.39	0.28	0.40	0.71
1800	3.06	2.89	0.39	0.28	0.40	0.71
1820	2.99	2.45	1.00	0.28	0.40	0.71
1840	3.23	2.20	1.27	0.28	0.40	0.71
1860	2.40	1.98	1.40	0.28	0.40	0.71
1880	2.19	1.48	1.68	0.30	0.40	0.71
1900	1.74	0.85	1.32	0.32	0.40	0.71
1920	1.09	1.04	0.82	0.35	0.40	0.71
1940	1.39	1.93	2.29	0.38	0.40	0.71
1960	0.64	1.71	2.28	0.44	0.35	0.63
1980	0.07	1.35	2.01	0.57	0.32	0.67
2000	0.07	0.07	1.43	0.62	0.58	0.85
2020	0.07	0.07	1.43	0.65	0.58	0.85

Table 1 presents the time series for population growth and for parameters of the wage process. Growth rates are in percentages and annualized. The last measured population growth rates are between 1980 and 2000 and beyond 2000 we use the population growth for non-Hispanic Whites between 1980 and 2000. For the wage process, we set missing values to their closest available estimates.

3.1 Model Inputs

A model period is twenty years. We begin in 1780, which roughly corresponds to the Declaration of Independence. Slavery ends in 1860, $\chi_t^\ell = 0$, the model period closest to the time when Congress passed the 13th Amendment which abolished slavery. We remove capital market restrictions on Black dynasties in 1960, $\chi_t^k = 0$, aligning with the start of the Civil Rights Movement. The last historical model period is 2020 and we consider policy experiments beginning in 2040.

We use tables from the Census between 1780 and 2000 for the population of Black and White dynasties, N_t^b and N_t^w . The fraction of Black dynasties in 1780 is $\phi_1 = 0.21$. We present annualized population growth in the first two column of Table 1. The White population grows more until the

early 1900s and the Black population grows faster after that.¹⁵

The wage of dynasty ι belonging to race h in period t is

$$z_{\iota t}^h = \max\{Z_t \mu_t^h \theta_{\iota t}, \bar{c}_t\}, \quad (17)$$

where Z_t is the aggregate component, μ_t^h is the race-specific component, and $\theta_{\iota t}$ is the idiosyncratic component of wages. Wages are adjusted so that they do not fall below the subsistence level of consumption \bar{c}_t . The idiosyncratic component follows the autoregressive process:

$$\log \theta_{\iota t} = \rho_t \log \theta_{\iota t-1} + \sigma_t \varepsilon_{\iota t}, \quad (18)$$

where ρ_t governs the persistence across generations, σ_t governs the cross-sectional dispersion of wages, and the shock $\varepsilon_{\iota t}$ is drawn from a standard normal distribution. Persistence ρ_t and dispersion σ_t are common across all dynasties.

The last four columns of Table 1 present the evolution of the four parameters of the wage process. The aggregate component of wages evolves as $Z_t = (1 + g_t)Z_{t-1}$, with its growth rate g_t being equal to the growth of gross domestic product per capita from the Maddison project (Bolt and van Zanden, 2020). For the race component, $\mu_t^w = 1$ for White dynasties and μ_t^b for Black dynasties is presented in the fourth column of the table. We take the racial gap in wages from Margo (2016), who uses labor force participation rates for agricultural workers and urban workers to compute Black-White relative income starting from 1870.¹⁶ We set the persistence ρ_t from the intergenerational mobility study of Aaronson and Mazumder (2008), who match men in the census to synthetic parents in the prior generation starting from 1940. Finally, we use the American Community Survey to estimate the cross-sectional dispersion σ_t from 1940 onward.¹⁷

¹⁵For periods 2020 and after, we extrapolate population figures using the average annual growth rate of non-Hispanic Whites between 1980 and 2000 and set $1 + n = 1.0007^{20}$ for both Black and White dynasties. Our model population excludes American Indian, Hispanic, and Asian individuals, as well as individuals who identify with multiple races. In our model, every Black dynasty is enslaved until 1860. According to census sources, roughly 90 percent of the Black population in the United States was enslaved by 1860.

¹⁶The first observations in Margo (2016) are for 1870, 1900, and 1940. We interpolate linearly to set the racial wage gap in 1880 and 1920. We use the 1870 observation for the racial wage gap in model period 1860 and before. The more recent data after 1940 come from census records. Aizer, Boone, Lleras-Muney, and Vogel (2020) study the role of defense production during the Second World War for closing the racial wage gap after 1940. Deroncourt and Montialoux (2021) study the role of expansions of the federal minimum wage for closing the racial earnings and income gap during the Civil Rights era. Bayer and Charles (2018) document that, despite the narrowing of the racial gap in median earnings between 1940 and 1970, the median Black man's rank in the total earnings distribution did not improve significantly.

¹⁷Our estimates are dispersion of log income and control for age and race fixed effects.

All dynasties begin with zero initial wealth, $a_{\iota 1} = 0$. We feed into the model an asset limit that evolves as $\bar{A}_t = \bar{A}_1(1+g)^{t-1}(1+n)^{t-1}$, where the initial value \bar{A}_1 is a parameter. We grow \bar{A}_t at a rate equal to the growth rate of wages g and population n , allowing the model to asymptote to a balanced growth path with constant returns and factor shares.

3.2 Parameterization

Table 2 presents our parameter values. The upper panel shows parameter values chosen externally without solving the model. The lower panel shows parameter values chosen so that model-generated moments match their data analogs. Table 3 presents the targeted moments.

Preferences are logarithmic, $\gamma = 1$. We use the inverse of the labor share from national income and product accounts to set $\alpha = 1.77$. The annual rate of depreciation, $1 - (1 - \delta)^{1/20} = 0.05$, equals the average annual depreciation rate of private fixed assets in national income and product accounts. Finally, for the real safe return, we pick $i = 0.02$ using the average return on real safe assets from [Jordà, Knoll, Kuvshinov, Schularick, and Taylor \(2019\)](#).

The distribution of beliefs in 1780 is Beta $\left(\frac{b\bar{q}_{\iota 1}}{1-\bar{q}_{\iota 1}}, b\right)$. The prior mean, $\bar{q}_{\iota 1} = \mathbb{E}_{\iota 1}q^*$, is heterogeneous across dynasties ι . Heterogeneity in initial expected returns allows the model to generate significant wealth inequality as optimistic dynasties become capitalists before pessimistic dynasties. Initial expected returns are drawn from a uniform distribution, $\bar{q}_{\iota 1} \sim U(0, \bar{q})$. Given $\bar{q}_{\iota 1}$, parameter b governs the dispersion of beliefs and is common across dynasties. Initial beliefs vary within group, but Black and White dynasties draw from the same initial distribution so that initial beliefs are identical across race.

Besides parameters for initial beliefs, \bar{q} and b , we pick the discount factor β , the objective probability of a good experience q^* , the initial asset limit \bar{A}_1 , and subsistence levels of consumption \bar{c}_t to target six moments. Table 3 shows that we target the wealth to income ratio, the labor share, the risky return, the share of wealth accruing to the top 10 and 50 percent of the wealth distribution, and the entrepreneurship rate.¹⁸

¹⁸Average wealth to income equals household net worth over gross domestic product from the Flow of Funds. The risky return is taken from [Jordà, Knoll, Kuvshinov, Schularick, and Taylor \(2019\)](#) and is adjusted for inflation. The shares of wealth accruing to the top 10 and 50 percent and the entrepreneurship rate are calculated from the SCF between 2010 and 2019. For the entrepreneurship rate, we define an individual as an entrepreneur, $k > 0$, if their business assets exceed average net worth in the survey.

Table 2: Model Parameters

Parameter		Value	Source/Logic
curvature of utility	γ	1.00	log preferences
returns to scale	α	1.77	inverse of labor share
depreciation rate (annual)	$1 - (1 - \delta)^{1/20}$	0.05	NIPA fixed assets
safe return (annual)	$(1 + i)^{1/20} - 1$	0.02	Jorda et al (2019)
discount factor (annual)	$\beta^{1/20}$	0.98	match targets
probability of success	q^*	0.91	match targets
initial asset limit	\bar{A}_1	0.23	match targets
subsistence consumption	\bar{c}_t	$0.81Z_t$	match targets
shape Beta distribution	\bar{q}	0.30	match targets
shape Beta distribution	b	1.20	match targets

Table 2 presents values of model parameters. The upper panel shows parameters values chosen externally. The lower panel shows parameter values chosen so that model-generated variables match their analogs in the data.

Table 3: Model Targets

Target (2020)		Data	Model
wealth / lifetime income	$\int ad\Phi / \int yd\Phi$	0.25	0.25
labor share	$\int z(1 - k)d\Phi / \int yd\Phi$	0.56	0.56
risky return	q^*r	0.07	0.07
top 10% wealth share	$\int_{0.9}^1 ad\Phi / \int ad\Phi$	0.76	0.76
top 50% wealth share	$\int_{0.5}^1 ad\Phi / \int ad\Phi$	0.99	0.98
entrepreneurship rate	$\int \mathbb{I}(k > 0)d\Phi$	0.03	0.03

Table 3 presents the moments targeted to estimate the parameters in the lower panel of Table 2.

The model matches these targets with (annualized) discount factor $\beta^{1/20} = 0.98$ and probability of successful entrepreneurship $q^* = 0.91$. The parameter estimates favor dispersed initial beliefs around a pessimistic mean ($\bar{q}/2 = 0.15$). These beliefs imply that few initially more optimistic dynasties end up being capitalists. Given the high probability of success q^* , these few capitalists hold a significant fraction of wealth in the economy, helping the model match the high concentration of wealth at the top. Finally, the subsistence consumption value \bar{c}_t implies strong non-homotheticity in preferences, helping the model account for the observation that the bottom half of the population owns almost none of the economy’s wealth.¹⁹

3.3 Comparing the Model with the Data

In this section, we evaluate the ability of the model to generate current and historical racial gaps in outcomes such as wealth, income, entrepreneurship, mobility, and beliefs about risky returns.

3.3.1 Wealth and Income

Table 4 compares the concentration of wealth and income in the model with the data. The measure of concentration is the share of wealth and income held by households above selected percentiles of their respective distributions. The data come from the SCF between 2010 and 2019, corresponding to model period 2020. The model accounts almost perfectly for the wealth concentration in the data up to the 5th percentile. The model also performs well in terms of matching the observed income concentration up to the 5th percentile. Above that percentile, the model overestimates wealth and income concentration relative to the data.²⁰

We next assess the ability of the model to generate racial gaps in wealth and income not targeted by the parameterization. In Table 5, we report ratios of average variables for Black households relative to those of White households. In the SCF, the ratio of average wealth is 0.15 and the ratio of average income is 0.45. These large racial gaps are consistent with previous

¹⁹We parameterize $\bar{c}_t = 0.81Z_t$, ensuring that subsistence consumption per capita grows at rate g over time. With this parameterization, \bar{c} equals 49 percent of the average wage in 2020.

²⁰Our estimates of the share of wealth held by the top 1 percent and top 0.1 percent are consistent with other estimates in the literature. Using Internal Revenue Service data, Saez and Zucman (2016) estimate these shares are 38 and 20 percent. Using the same data, but a different capitalization approach, Smith, Zidar, and Zwick (2020) estimate they are 30 and 14 percent. For our SCF data, these authors report a share of 13 percent for the top 0.1 percent.

Table 4: Wealth and Income Concentration

(2020, share of top)	Wealth		Income	
	Data	Model	Data	Model
50 percent	0.99	0.98	0.86	0.89
20 percent	0.87	0.86	0.62	0.71
10 percent	0.76	0.76	0.47	0.59
5 percent	0.64	0.67	0.37	0.51
1 percent	0.37	0.53	0.20	0.39
0.1 percent	0.14	0.25	0.07	0.18

Table 4 presents the share of wealth and income held by households above selected percentiles of their respective distributions. The data moments are calculated from the SCF between 2010 and 2019.

Table 5: Racial Gap in Wealth and Income

(2020, Black/White)	Wealth Ratio		Income Ratio	
	Data	Model	Data	Model
Mean	0.15	0.17	0.45	0.36
99 percentile	0.13	0.19	0.25	0.28
90 percentile	0.19	0.41	0.51	0.58
50 percentile	0.10	0.06	0.57	0.59

Table 5 presents the Black to White ratio of wealth and income at the mean and selected percentiles of the corresponding distributions. The data moments are calculated from the SCF between 2010 and 2019.

Table 6: Decomposition of Racial Wealth Gap

(2020)	Asset Type	Portfolio Weight	Contribution to Wealth Gap
1. Model	Risky	0.58	0.70
2. Data	Risky	0.58	0.60
3. Data	Public Equity	0.25	0.26
4. Data	Private Equity	0.33	0.34
5. Data	Owner-Occupied Housing	0.18	0.15
6. Data	Bonds	0.18	0.18

Table 6 shows for various types of assets their contribution to the racial wealth gap defined in equation (19) and their portfolio weights. The data entries come from the SCF between 2010 and 2019.

findings in the literature such as those in the recent work of [Kuhn, Schularick, and Steins \(2020\)](#). The model is successful in generating the large racial differences in average wealth and income observed in the data. Similar to the data, the model also generates a lower ratio for median wealth than for average wealth and a higher ratio of median income than of average income.

Wealth in the SCF is net worth from all assets minus liabilities, which includes public equity, business assets, real estate, owner-occupied housing, bonds, durables, and other savings accounts. We interpret a_{it} in the model as encompassing all these forms of wealth as is consistent with this definition. To assess the relative importance of different types of assets in accounting for the racial gap in total wealth, we decompose the racial wealth gap as follows:

$$\text{Gap} = 1 - \frac{\text{Wealth}^b}{\text{Wealth}^w} = \sum_j \frac{\text{Asset}_j^w}{\text{Wealth}^w} \left(1 - \frac{\text{Asset}_j^b}{\text{Asset}_j^w} \right), \quad (19)$$

where wealth is the sum over all assets j . Equation (19) decomposes the gap between White and Black wealth into gaps arising from different asset classes, where the asset-specific gaps are weighted by the portfolio weights of White households.

The first row of Table 6 applies this decomposition to the model. Wealth in our model is invested in risky assets, $k_{it}a_{it}$, and safe assets, $(1 - k_{it})a_{it}$. The portfolio weight on risky assets for White households is 58 percent. The contribution of risky assets to the total wealth gap is 70 percent. The second row performs the same decomposition in the SCF. Risky investments in our model correspond to investments in public equity, real estate investment excluding own housing, and private business assets.²¹ We obtain a portfolio weight of 58 percent in the data, perfectly matching the portfolio weight of risky assets in the model. Further, similar to the model, we find that the racial gap in risky assets accounts for more than half of the total gap in the data.

The other rows repeat these decompositions for subcategories of assets to assess their relative importance in accounting for the total wealth gap in the data. Rows 3 and 4 present the two largest subcategories of risky assets, investments in public equity and investments in private equity, with the latter including assets used in private businesses and real estate activities excluding owner-occupied housing. Rows 5 and 6 present the two largest subcategories of safe assets, investments in

²¹In the SCF, we split asset classes with an ambiguous asset mix (non-money-market mutual funds, quasi-liquid individual retirement accounts, and pensions) between stocks and bonds in proportion to their unambiguous shares.

Table 7: Evolution of Racial Wealth and Wage Gap

Gap (1-Black/White)	Wealth		Wage	
	Data	Model	Data	Model
1900	0.96	0.98	0.68	0.68
2020	0.85	0.83	0.35	0.35

Table 7 presents the average wealth and wage gaps in 1900 and 2020. The data entry for wealth in 1900 is from [Higgs \(1982\)](#) and [Margo \(1984\)](#). The data entry for wealth in 2020 comes from the SCF between 2010 and 2019. The data entries for wages are from [Margo \(2016\)](#).

owner-occupied housing and bonds. With respect to the largest types of assets, we find that for the racial wealth gap in total wealth, private equity is the most important asset and owner-occupied housing is the least important asset.

3.3.2 Wealth Convergence

We next assess the ability of the model to generate a realistic speed of wealth convergence across race. Matching the historical speed of convergence lends credibility to the model when analyzing how reparations affect the future evolution of the racial wealth gap. Table 7 presents the gap between Black and White average wealth in 1900 and 2020. The gap for the early period comes from the historical evidence of [Higgs \(1982\)](#), who uses Georgia tax assessment records to measure wealth by race, and [Margo \(1984\)](#) who complements this analysis with data from Arkansas, Kentucky, Louisiana, North Carolina, and Virginia. The historical data show a slow convergence of Black wealth, with the gap decreasing from 96 percent in 1900 to 85 percent in 2020. We characterize this convergence slow as compared with the convergence of wages, with the wage gap transitioning from 68 to 35 percent. Our model is successful in generating such a slow convergence of wealth, with the wealth gap transitioning from 98 to 83 percent.²²

²²Recent work by [Derenoncourt, Kim, Kuhn, and Schularick \(2022\)](#) has extended the time series of the racial wealth gap back to 1860. They document a racial wealth gap of roughly 98 percent. We have adopted the simplified assumption that all Black dynasties are enslaved before 1860 which implies that the wealth gap in our model period 1860 is 100 percent.

Table 8: Entrepreneurship

A. Fraction entrepreneurs (percent)	White		Black	
	Data	Model	Data	Model
	3.1	3.6	0.3	0.0
B. Entrepreneurs Share of top ...	Wealth		Income	
	Data	Model	Data	Model
50 percent	0.88	0.96	0.89	0.98
20 percent	0.66	0.84	0.68	0.87
10 percent	0.57	0.68	0.52	0.71
5 percent	0.39	0.52	0.40	0.54
1 percent	0.20	0.23	0.19	0.24
0.1 percent	0.06	0.06	0.06	0.07

Table 8 presents statistics of entrepreneurship. The first panel shows the share of households who are entrepreneurs and the second panel shows the share of wealth and income held by entrepreneurs above selected percentiles of their respective distributions. The data entries come from the SCF between 2010 and 2019. In the SCF, we define an individual as an entrepreneur, $k > 0$, if their business assets exceed average net worth in the survey.

3.3.3 Entrepreneurship

The model generates significant racial wealth and income gaps partly because White dynasties are more likely to be capitalists than Black dynasties. Are such differences in entrepreneurship rates present in the data? Panel A of Table 8 shows differences in entrepreneurship rates by race. Quantitatively, the model generates a 3.6 percentage points gap in the entrepreneurship rate, close to the 2.8 percentage points gap in the data.²³ Additionally, in panel B of Table 8, the model performs well in matching the observed distribution of wealth and income within entrepreneurs. For example, the top 1 percent of entrepreneurs hold 20 percent of entrepreneurial wealth in the data, compared with 23 percent in the model.

²³Fairlie and Meyer (2000) document that the self-employment rate is lower for Black than for White men and the ratio of self-employment rates has remained remarkable stable since the early 1900s. Bogan and Darity (2008) argue that, while much of the literature tries to account for the entrepreneurship gap by appealing to cultural differences, the comparison of Black with immigrant groups suggest a more important role for discriminatory practices, institutions, and legislation restricting Black entrepreneurship. Our model is compatible with a more elaborate version of the Bogan and Darity (2008) view, as the historical exclusions they describe endogenously lead to differences in beliefs about entrepreneurship.

Table 9: Upward Rank Mobility

(1990)	Data		Model	
Decile d	White	Black	White	Black
1	0.97	0.80	0.88	0.82
3	0.76	0.54	0.67	0.50
5	0.58	0.51	0.51	0.38
7	0.36	—	0.39	0.27
9	0.31	—	0.24	0.16

(1930)	Data		Model	
Decile d	White	Black	White	Black
1	0.90	0.68	0.86	0.59
3	0.59	0.31	0.65	0.33
5	0.38	—	0.50	0.22
7	0.28	—	0.39	0.13
9	0.16	—	0.25	—

Table 9 presents probabilities of upward rank mobility at selected deciles of the income distribution. Data entries are from [Collins and Wanamaker \(2017\)](#). Missing entries indicate no or very few observations to calculate probabilities.

3.3.4 Income Mobility

We next assess the ability of the model to generate historical patterns of income mobility by race. The evidence comes from [Collins and Wanamaker \(2017\)](#), who link individual census records between 1910 and 1930 to derive historical mobility statistics and use National Longitudinal Survey of Youth data for the more recent period. Entries in Table 9 show upward rank mobility probabilities by decile d :

$$\text{Upward Rank Mobility}(d) = \mathbb{P}(\text{rank}(y_t) > \text{rank}(y_{t-1}) | \text{rank}(y_{t-1}) \in d). \quad (20)$$

This statistic measures the probability that a child exceeds their parents' rank in the income distribution for a parent belonging to decile d . Rank is measured within the total population, including both Black and White dynasties.

Beginning with the upper panel of Table 9, we see that the model is successful in generating a racial mobility gap in the latter period. For example, starting at the third decile, 76 percent of

White children exceed their parents' rank, whereas only 54 percent of Black children do so. The observed gap of 22 percentage points is close to the 17 percentage points gap generated by the model. As seen in the lower panel of Table 9, the model is also successful in generating even larger mobility gaps observed during the early 1900s. For example, again at the third decline, 59 percent of White children exceeded their parents' rank, whereas only 31 percent of Black children did so. The observed gap of 28 percentage points is close to the 32 percentage points gap generated by the model.

Two features of the model allow it to generate mobility patterns similar to the patterns in the data. First, only White dynasties become entrepreneurs and, given the high returns from entrepreneurship, entrepreneurs are more likely to surpass laborers in the income distribution. Second, despite persistence parameter ρ_t and dispersion parameter σ_t being common across all dynasties in the wage process (18), Black dynasties are less likely to move upward in the total population's income distribution, because they draw wages from a distribution with a lower mean than the average dynasty in the population, as shown by the race component of wages μ_t^h in equation (17). Since the racial wage gap was larger in the 1900s, Black dynasties were less likely to move upward in the 1900s than today.

3.3.5 Beliefs about Risky Returns

The model generates a racial belief gap in response to the labor and capital market exclusions that do not allow Black dynasties to participate in markets. We now compare model predictions for beliefs about risky returns to measures of beliefs about equity returns in survey responses from the University of Michigan's Surveys of Consumers.²⁴ The question we use is:

Think about a diversified stock fund which holds stock in many different companies engaged in a wide variety of activities. Suppose someone were to invest one thousand dollars in such a mutual fund. What do you think is the chance this one thousand

²⁴We also observe a racial gap in public equity holdings, similar to the racial gap in entrepreneurship. For example, using the SCF surveys between 1992 and 2019, we find that the portfolio share of public equities for White households averages around 0.23, as compared with a portfolio share of around 0.14 for Black households. Chiteji and Stafford (1999) use data from the Panel Study of Income Dynamics to document that stock market participation is correlated across generations.

dollar investment will increase in value, so that it is worth more than one thousand dollars one year from now?

We use Michigan Survey responses to this question between June 2002 and December 2015. We merge these data to microdata samples, available through the Inter-University Consortium for Political and Social Research, which contain the respondent’s race. We restrict our sample to include Black and White individuals between 25 and 65 years of age. The cleaned dataset contains 42,756 observations. Roughly 10 percent of respondents identify as Black.²⁵

The response to the Michigan Survey question is a probability assessment that a diversified equity fund increases in value. The difficulty in comparing beliefs in the model with survey responses is that respondents in the data may have a benchmark return other than zero in their mind (say, because of inflation) and that dynasties in our model have the option to invest in a safe technology featuring growth. Our solution is to choose a benchmark return in the model, called \bar{r} , such that the model-generated average probability assessment that risky investments exceed this benchmark \bar{r} matches the average probability assessment of 0.51 from the survey. Formally, for each dynasty, we calculate the probability $P_t(\pi_{it}, \bar{r})$ that the economy-wide risky return exceeds \bar{r} , evaluated under their model-generated belief π_{it} in 2020:

$$P_t(\pi_{it}, \bar{r}) = \int_{q:qr_t > \bar{r}} \pi_{it}(q) dq. \tag{21}$$

The model-generated average probability assessment equals $\int P_{it} d\Phi = 0.51$ for $\bar{r} = 0.006$.

Having targeted the average response in the total population, we evaluate the ability of the model to generate dispersion of beliefs. Table 10 summarizes our results. In the first row, the mean probability of successful investment in the total population is the same in the model and the data by construction. The second and third rows show the mean probability for White and Black households. The racial gap in mean beliefs is 12 percentage points in the model, compared with 7 percentage points in the data.²⁶ At the same time, the model generates a dispersion of

²⁵Responses to this question were studied by [Dominitz and Manski \(2011\)](#) for the period between June 2002 and August 2004. The authors find nearly identical results to the results we report in Table 10. [Dominitz and Manski \(2011\)](#) also report similar results for their Survey of Economic Expectations. Since the Survey of Economic Expectations has only 85 Black respondents, we focus on the Michigan Survey.

²⁶Consistent with the model in which the probability assessment P depends on other variables that differ by race,

Table 10: Beliefs about Risky Returns

Probability of Successful Investment	Data	Model
Mean	0.51	0.51
Mean, White	0.51	0.53
Mean, Black	0.44	0.41
Std Deviation	0.29	0.28
Std Deviation, White	0.29	0.30
Std Deviation, Black	0.29	0.16

Table 10 presents statistics on the probability assessment of successful investments. Data entries show means and standard deviations of the probability of an increase in the value of a diversified stock fund as reported in the Michigan Survey. The data contain 42,756 observations. Roughly 10 percent of respondents identify as Black.

beliefs in the total population as large as that measured in the data. The model replicates almost perfectly the dispersion of beliefs within White households, but underestimates the dispersion of beliefs within Black households.

3.4 Racial Welfare Gap

We calculate the racial welfare gap and decompose it into a component reflecting differences in wages and a component reflecting differences in wealth. Our welfare gap is the tax \mathcal{T}_{it} that would make a White dynasty with $(z_{it}^w, a_{it}^w, \mathbb{E}_{it}^w q^*)$ indifferent to being a Black dynasty with $(z_{it}^b, a_{it}^b, \mathbb{E}_{it}^b q^*)$. Formally, we find the tax that solves

$$V(z_{it}^b, a_{it}^b, \mathbb{E}_{it}^b q^*) = \hat{V}(z_{it}^w, a_{it}^w, \mathbb{E}_{it}^w q^*; \mathcal{T}_{it}), \quad (22)$$

where V is the maximized expected utility in equation (11) that takes into account the optimal occupational choice and the allocation of resources between consumption and intergenerational transfers after the realization of the investment shock. The value \hat{V} is the same value but under tax \mathcal{T}_{it} , which subtracts resources from the income side of the budget constraint in equation (6).

Table 10 shows mean probabilities by group without controls. A regression of the probability assessment on a race dummy controlling for a host of observables (age, time, sex, marital status, region, education, number of children, number of adults, and income) produces an estimated coefficient for the race dummy equal to 5 percentage points with a standard error of 0.5. Thus, the difference in mean probabilities reflects a race component conditional on other observables.

Table 11: Racial Welfare Gaps

(relative to mean wealth, 2020)	Baseline	No Wages	No Wealth
Mean	0.14	0.11	0.10
99 percentile	1.26	1.25	1.07
95 percentile	0.18	0.06	0.13
90 percentile	0.12	0.04	0.09
75 percentile	0.07	0.02	0.05
50 percentile	0.03	0.01	0.02

Table 11 presents statistics of the welfare difference \mathcal{T} in equation (22) and decompositions of the welfare difference between the component due to differences in wages and differences in assets.

In calculating \mathcal{T}_{it} , we compare White and Black dynasties that are identical in terms of history of wage and investment shocks $\{\varepsilon_{lj}, e_{lj}\}_{j=1}^t$. In the absence of historical exclusions, the two dynasties would thus be identical.²⁷ When both White and Black dynasties are laborers, the solution for the racial welfare gap for dynasty ι is as follows:

$$\mathcal{T}_{it} = (z_{it}^w + (1 + i_t - \delta)a_{it}^w) - (z_{it}^b + (1 + i_t - \delta)a_{it}^b). \quad (23)$$

For laborers, the welfare gap equals the difference in available resources for consumption and intergenerational transfers in the budget constraint (6). Since both races have the same preferences and production technologies, equalizing resources leads to identical consumption and intergenerational transfers and eliminates welfare differences.

Table 11 presents the racial welfare gap at various percentiles of the welfare gap distribution. The gaps are annualized for ease of interpretation. In the first column, the median gap equals 0.03 times average wealth in the economy. Applying an average wealth of 750,000 dollars leads to a median welfare gap of 22,500 dollars per year. The mean welfare gap is 105,000 dollars. What explains the significant difference between median and mean welfare gaps? As the first column shows, the distribution of welfare gaps is significantly dispersed, with the welfare gaps at the top far exceeding the welfare gaps at the middle of the distribution.

²⁷More precisely, the dynasties are identical up to population differences. However, we eliminate population growth differences in Table 1 starting in 2000, so that the two dynasties are identical in the absence of exclusions starting in 2000.

To understand the relative importance of wages and wealth in accounting for the racial welfare gap, in the second column we present the same statistics when we equalize wages and in the third column we present the same statistics when we equalize wealth between Black and White dynasties ι that share the same history of shocks. The mean gap falls from 0.14 to 0.11 when we equalize wages and to 0.10 when we equalize wealth. The reductions in racial gaps do not add up to the total welfare gap, partly because wages and wealth covary positively in the cross section and partly because dynasties have different beliefs, which we do not change. For the mean welfare gap, we find a larger contribution of wealth than of wages. However, wages become the dominant source of the welfare gap for most of the distribution, as wealth differences matter most at the top of the distribution.

It is instructive to compare our results with those of [Brouillette, Jones, and Klenow \(2021\)](#), who construct a measure of consumption-equivalent welfare for Black and White dynasties. The first difference between the two approaches is the sources of welfare differences. Relative to them, we incorporate utility from intergenerational transfers to descendants. Relative to us, they account for life expectancy, mortality, and leisure differences. The second difference is that we have an equilibrium framework that expresses arguments of the utility function (consumption and intergenerational transfers) as a function of primitives, while [Brouillette, Jones, and Klenow \(2021\)](#) change directly inputs to the utility function (for example, consumption) in measuring welfare differences. While our approach comes with added complexity, it has the conceptual advantage of being able to account for dynasty responses with respect to changes in policies such as reparations.

Despite these differences, we highlight some similarities between our results and those of [Brouillette, Jones, and Klenow \(2021\)](#). The authors calculate a 35 percent gap in consumption equivalents for the recent period, translating to a mean welfare gap of roughly 45,000 dollars. Our mean welfare gap is almost twice as large because we take into account the tail of the wealth distribution that introduces a significant deviation between mean and median welfare gap. Our welfare gap aligns with the estimate of [Brouillette, Jones, and Klenow \(2021\)](#) around the 75 percentile of the welfare gap distribution.

Table 12: Counterfactual History

(2020, Black over White)	Wealth Ratio	Income Ratio	Entrepreneurship Gap
A. All Differences	0.17	0.36	-3.6
– Labor Exclusion	0.43	0.60	-3.3
– Capital Exclusion	0.17	0.36	-3.6
– Demographics	0.18	0.37	-3.6
B. No Differences	1.00	1.00	0.0
+ Labor Exclusion	0.18	0.37	-3.6
+ Capital Exclusion	0.47	0.62	-3.2
+ Demographics	1.37	1.28	0.9
C. Baseline	0.17	0.36	-3.6
$\beta^{1/20} = 0.95$	0.25	0.47	-2.7
$q^* = 0.70$	0.25	0.48	-2.3
$\bar{c} = 0.50Z$	0.24	0.39	-7.6
$\gamma = 3$	0.20	0.40	-0.6

Table 12 presents counterfactual outcomes when we remove historical events driving racial differences in the model (panel A), when we add historical events driving racial differences in the model (panel B), and when we change features of the model environment relative to the baseline (panel C).

3.5 How Historical Events Shape Today’s Racial Gaps

We conclude this section by evaluating the effects of historical events and features of the model economy on current racial gaps. Table 12 summarizes our results. Panel A shows the racial gap in wealth, income, and the entrepreneurship rate when we remove historical events. Panel B shows racial gaps when we add historical events starting from no racial differences. Panel C shows racial gaps when we change features of the model economy.

The top panel shows that removing the history of labor market exclusions from our baseline model results in a ratio of average wealth of 0.43 as opposed to 0.17 with these exclusions, an income ratio of 0.60 as opposed to 0.36, and a gap in entrepreneurship rate of 3.3 percentage points as opposed to 3.6. Without labor market exclusions, we would also observe gaps today because capital market exclusions prohibit members of the Black dynasties from becoming entrepreneurs. On the other hand, removing only capital market exclusions does not affect current outcomes.

Labor market exclusions on their own put members of Black dynasties at significant disadvantage in terms of becoming capitalists and accumulating wealth, making the incremental effect of capital market exclusions in our model zero.

The middle panel confirms these conclusions by adding historical events one at a time. If there were only demographic differences, Black dynasties in our model would achieve a higher wealth, income, and entrepreneurship rate than White dynasties by 2020. As shown in Table 1, in early periods the population growth of White dynasties is higher than the population growth of Black dynasties, making it more costly for White dynasties to transfer wealth across generations on a per capita basis.

In the lower panel, we assess the role of structural parameters for racial gaps. A lower discount factor β is associated with a higher wealth and income ratio, as dynasties have a lower willingness to bequeath wealth. A lower probability of successful investments q^* is also associated with a higher wealth and income ratio, as White capitalists realize lower income from risky investments. A lower level of subsistence consumption \bar{c} is associated with higher wealth and income ratios, as a smaller fraction of Black dynasties are concentrated at the bottom of the distribution where \bar{c} tends to bind. Finally, wealth and income ratios increase under a higher curvature in the utility function, $\gamma = 3$, because increased risk aversion induces more dynasties to choose safe labor over risky investment activities.

4 Policy Experiments

We perform various policy experiments to explore the implications of our model for the future trajectory of the racial wealth gap. We begin by studying the effects of wealth transfers toward Black dynasties. Then, we analyze the alternative policy of subsidizing risky investments by Black entrepreneurs. We conclude by discussing the role of learning from others for wealth convergence.

4.1 Wealth Transfers

We first discuss the financing of wealth transfers and their size. Next, we discuss the evolution of racial wage gap and how it affects the wealth gap. We then present the effects of wealth transfers

on various outcomes by race.

4.1.1 Transfers and Financing

Wealth transfers to Black dynasties are financed by a one-time unanticipated tax on White dynasties' wealth. The wealth tax rate function, Λ , for White dynasties is

$$\Lambda(a_t^w) = \begin{cases} \lambda & \text{if } a_t^w < a^*, \\ (1 - \lambda) \frac{a_t^w - a^*}{a_t^w} & \text{if } a_t^w \geq a^*. \end{cases} \quad (24)$$

We consider two forms of financing which differ in their progressivity.

1. Progressive wealth taxation corresponds to $\lambda = 0$ and $a^* > 0$. Wealth below a^* is not taxed and wealth above a^* is taxed at a 100 percent rate.
2. Proportional wealth taxation corresponds to $\lambda > 0$ and $a^* \rightarrow \infty$. All wealth is taxed at a proportional rate λ .

We consider transfers τ to Black dynasties, resulting in average wealth of Black dynasties being a multiple m of average wealth of White dynasties. For any multiple m , we solve for the tax parameter (either λ or a^*) so that every Black dynasty receives a lump sum equal to τ

$$\int (a_t^b + \tau) d\Phi^b = m \int (1 - \Lambda(a_t^w)) a_t^w d\Phi^w, \quad \text{such that} \quad \phi\tau = (1 - \phi) \int \Lambda(a_t^w) a_t^w d\Phi^w, \quad (25)$$

where ϕ is the share of Black dynasties in the population.²⁸

Our baseline policy is $m = 1$, so that average wealth is equalized between Black and White dynasties at the time of reparations. This is a natural policy to consider, because in the absence of historical exclusions average wealth of Black and White dynasties is equalized. The size of the required transfers is $\tau = 0.75$ relative to the average wealth in the economy. Given average household wealth of 750,000 dollars, we obtain a transfer of 562,500 dollars per Black dynasty. Using the census count of 18 million Black households, we find that aggregate reparation transfers equal roughly 10 trillion dollars. To finance these wealth transfers, the progressive policy taxes at

²⁸Every Black dynasty receives the same transfer τ . We have experimented with two alternative transfer functions: proportional transfers and transfers that generate the same dispersion of wealth between Black and White dynasties. Both alternatives generate an evolution of the racial gap in average wealth that is similar to the evolution under the same transfer τ .

100 percent all White wealth exceeding 113 times average wealth, roughly 84 million dollars. The proportional tax rate to finance these transfers is 13 percent.

Our approach is to calculate the tax and transfer system that eliminates the wealth gap between Black and White dynasties today. Consistent with our approach, [Darity and Mullen \(2020\)](#) propose as criterion the equalization of average wealth and arrive at 8 trillion dollars. Despite its simplicity, our approach results in total wealth transfers of similar magnitude to other estimates in the literature based on the present discounted value of forgone earnings from slavery. For example, [Neal \(1990\)](#) calculates wealth transfers of 1.4 trillion dollars in 1983. Applying the average real return, $i \frac{\int (1-k_t)a_t d\Phi}{\int a_t d\Phi} + q^* r \frac{\int k_t a_t d\Phi}{\int a_t d\Phi} = 0.05$, and adding an inflation rate of 0.02 yields 12 trillion dollars.

4.1.2 Wage Equalization

Average wealth differences between Black and White dynasties persist forever in the presence of racial differences in wages. To separate the effects of reparations from the effects of different wages on wealth, we assume that at the time of reparations, labor market policies are enacted that permanently close the racial gap in wages. Formally, we set the racial component of wages to $\mu_t^b = 1$ in equation (17) for all periods starting in 2040.

The left panel of Figure 6 presents the evolution of the ratio of average Black to average White wealth. Without any policies, the orange dot-dashed line shows a slow convergence of the wealth ratio toward a value of roughly 0.25. Eliminating average wage differences across races permanently increases the wealth ratio to about 0.5, as shown by the black solid line. Thus, equalizing average wages permanently eliminates roughly half of the racial wealth gap.

4.1.3 Effects of Transfers on Wealth and Welfare Gaps

The left panel of Figure 6 also shows the evolution of the wealth ratio after transfers toward Black dynasties financed either with progressive taxes (red dashed line) or proportional taxes (blue long-dashed line). The transfers are enacted in addition to the wage equalization policy. Thus, the value of 0.5 is the long-run wealth ratio in the absence of reparations with which we compare the case of reparations. By construction, the racial wealth ratio is one in 2040 under

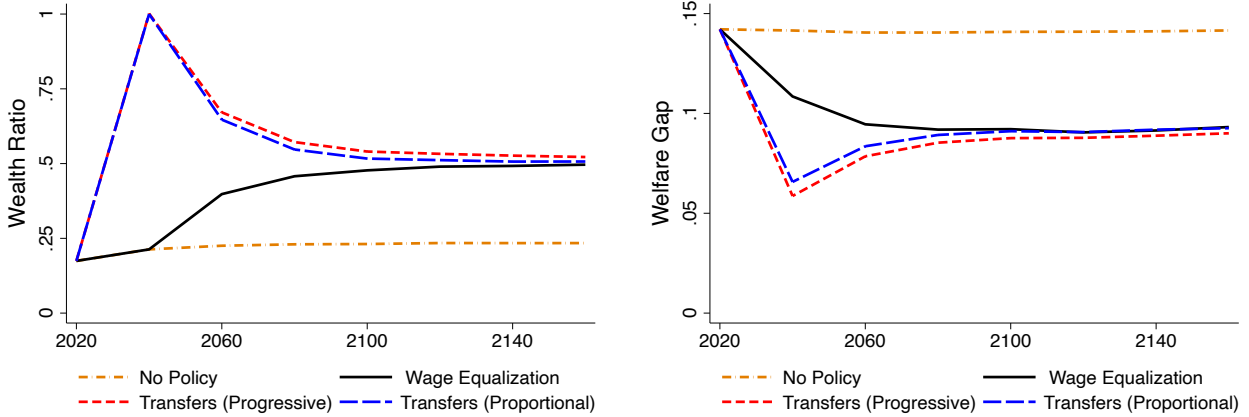


Figure 6: Evolution of Racial Wealth and Welfare Gaps

The left panel of Figure 6 shows the wealth ratio under no policy changes (orange dot-dashed line), after eliminating the racial wage gap in 2040 (black solid line), after eliminating the racial wage gap and providing wealth transfers financed with progressive wealth taxes in 2040 (red dashed line), and after eliminating the racial wage gap and providing wealth transfers financed with proportional wealth taxes in 2040 (blue long-dashed line). The right panel presents the average welfare gap under the same scenarios.

our baseline policy, which calculates the tax and transfer system that equalizes average wealth. However, under both financing systems, the wealth ratio reverts back to a value of roughly 0.5, which is the long-run wealth ratio in the absence of wealth transfers. Thus, the long-run effect of one-time wealth transfers on the racial wealth gap is zero.

The logic of why transfers do not lead to wealth convergence is the same as the logic in the example of Section 2.6. Following centuries of exclusions from labor and capital markets, Black dynasties enter the reparations era with pessimistic beliefs about investment returns. Despite having equal mean wages and wealth, the lower expected returns lead members of Black dynasties to forgo risky investments and to continue to be laborers. Over time, the economy converges to the same outcome we would have observed without reparations.

The right panel of Figure 6 shows the evolution of the racial welfare gap. Through the elimination of the wage gap, the welfare gap declines from 0.14 to 0.09. After wealth transfers to Black dynasties, the welfare gap decreases even more in the short run. However, in the longer term, the welfare gap converges to the same value we would have observed without reparations.

Next, we explore the distributional effects of wealth transfers. We define the representation

index in period t as follows:

$$R_t(p) = \frac{\int_p^1 \mathbb{I}(h_i = b) a_{it} d\Phi_t}{\phi_t \int_p^1 a_{it} d\Phi_t}, \quad (26)$$

where p denotes the percentile of the wealth distribution, $\mathbb{I}(h_i = b)$ is an indicator that selects Black dynasties, and ϕ_t is the Black population share. The index captures the Black dynasties' representation in wealth. The numerator equals the wealth of Black dynasties in the top p percentiles of the total wealth distribution. The integral in the denominator equals the wealth of all dynasties in the top p percentiles. We obtain $R_t(0) = 1$ when average wealth is equalized across race. Black dynasties are represented equally, $R_t(p) = 1$ for all p , when the Black wealth share equals the Black population share at all percentiles of the wealth distribution. When Black dynasties are underrepresented in wealth, $R_t(p) < 1$.

Figure 7 shows representation at percentiles of the wealth distribution in 2040, 2060, 2100, and the long run. After reparation transfers in 2040, average wealth is equalized and so representation equals 1 at the zero percentile. The transfers lead to an overrepresentation of Black dynasties between the 50th and the 75th percentile because every Black dynasty receives the same transfer τ , which exceeds the wealth of the median White dynasty. As is consistent with the divergence of wealth and welfare we documented before, over time the representation of Black dynasties tends to values below one. As the last panel demonstrates, Black dynasties do not have greater representation in the long run than in the absence of transfers. Wage equalization improves Black representation in wealth, but it is still significantly lower than in the case without historical exclusions.

Could larger wealth transfers lead to long-run convergence? The first row of Table 13 repeats the evolution of the wealth ratio for the baseline policy, which equalizes wealth between Black and White dynasties. In the second row, reparation transfers target a wealth ratio of $m = 3$, which means that we transfer to Black dynasties enough wealth to make them three times as wealthy as White dynasties. Under $m = 3$, the transfer per Black dynasty is 1.5 million dollars and the progressive financing policy taxes all wealth above 17 million. While the divergence of wealth is slower, the wealth ratio asymptotes again toward roughly 0.5, as with $m = 1$.²⁹

²⁹The long-run outcomes refer to the median outcome over the last 300 model periods from a simulation of 600

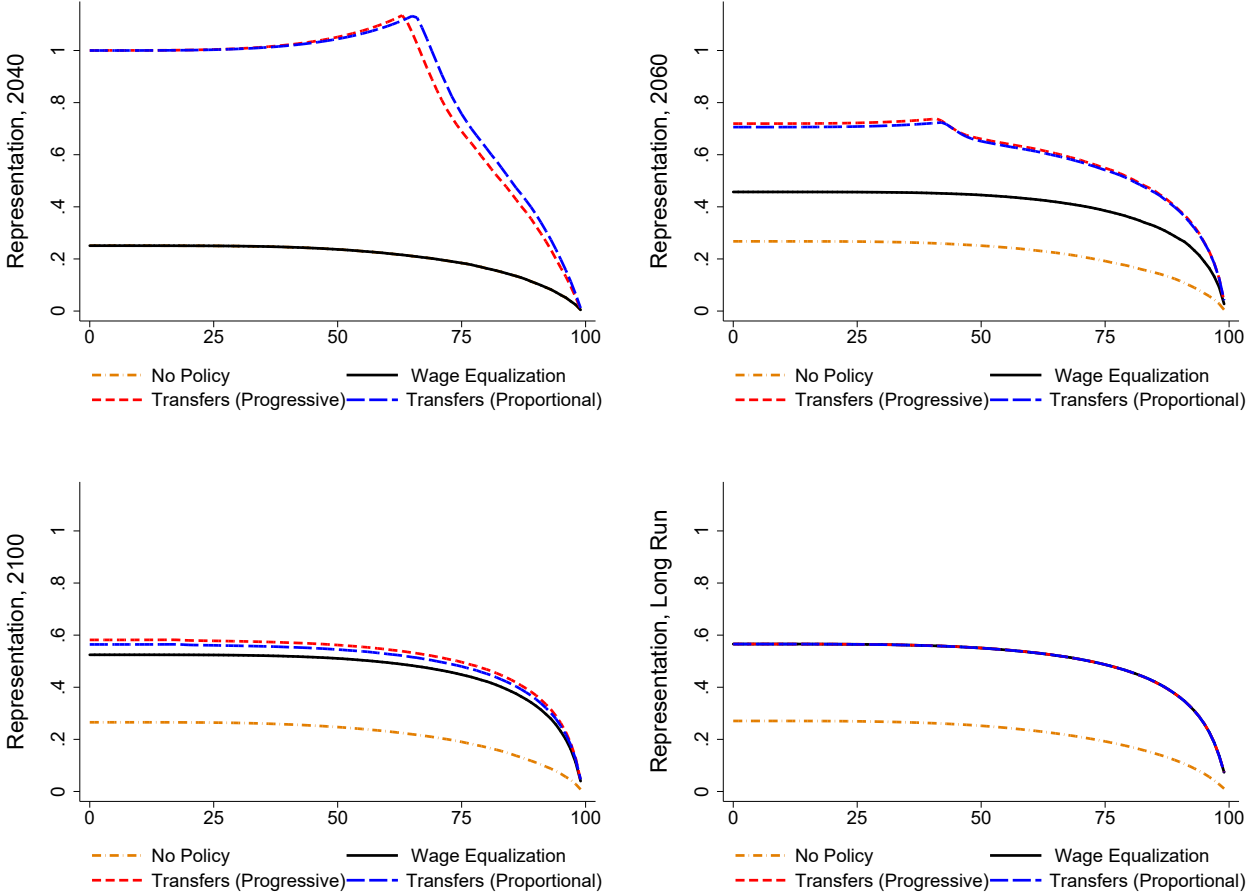


Figure 7: Representation in Wealth: Transfers

Figure 7 shows representation in equation (26) as a function of the percentile of the wealth distribution in 2020, 2040, 2100, and the long run. In each panel, we demonstrate the index under no policy changes (orange dot-dashed line), after eliminating the racial wage gap in 2040 (black solid line), after eliminating the racial wage gap and providing wealth transfers financed with progressive wealth taxes in 2040 (red dashed line), and after eliminating the racial wage gap and providing wealth transfers financed with proportional wealth taxes in 2040 (blue long-dashed line)

4.2 Investment Subsidies

What policy can eliminate the racial wealth gap in the long run? Following centuries of labor and capital market exclusions, Black dynasties enter into reparations with pessimistic beliefs, making their entrepreneurship rates relatively inelastic to wealth transfers. This suggests that more effective policies directly target the trade-off between labor and capital. Instead of giving a transfer, we now use collected tax revenues to finance an investment subsidy for Black capitalists.

model periods.

Table 13: Wealth Transfers versus Investment Subsidies

(relative to mean wealth)		Wealth Ratio (Black/White)		
Transfer	Financing	2040	2100	∞
1. $\tau = 0.75$	$a^* = 113$	1.00	0.54	0.52
2. $\tau = 2.01$	$a^* = 23$	3.00	0.70	0.52
3. $s = 0.22$	$a^* = 113$	0.25	0.59	0.85
4. $s = 0.27$	$a^* = 23$	0.33	0.97	1.00

Table 13 presents the wealth ratio in selected periods under four reparation programs. The two top rows consider wealth transfers, while the two bottom rows consider investment subsidies. Both transfers and subsidies are financed with progressive taxes. In row 1 transfers eliminate the racial wealth gap in 2040 ($m = 1$). In row 2 the average wealth of Black dynasties in 2040 is three times ($m = 3$) higher than the average wealth of White dynasties. In rows 3 and 4, we use the same revenues collected in rows 1 and 2 to finance a subsidy s which is the additional annualized return on successful risky investment activities.

We calculate the subsidy s that exhausts the revenues collected by taxing the wealth of White dynasties:

$$\phi q^*(r + s) \int a_t^b k_t^b d\Phi^b = (1 - \phi) \int \Lambda(a_t^w) a_t^w d\Phi^w. \quad (27)$$

The two bottom rows of Table 13 summarize our results when investment subsidies are financed with progressive taxes. Tax revenues finance an investment subsidy of 22 percentage points in row 3 and an investment subsidy of 27 percentage points in row 4. The smaller subsidy generates a racial wealth ratio of 0.25 in 2040. While the policy does not eliminate the wealth gap at the time of the subsidy, it incentivizes risky investments by Black dynasties. Investment subsidies are more powerful than wealth transfers in increasing the wealth ratio in the long run, with the wealth ratio tending to 0.85. In row 4, a 27 percentage points subsidy toward Black capitalists eliminates the racial wealth gap in the long run. Such subsidies effectively offset the pessimistic beliefs of Black dynasties at the time of reparations and reset the conditions of Black dynasties in 2040 to the same conditions of White dynasties.

Figure 8 shows Black representation following subsidies toward risky investment activities. Compared with the wealth transfers in Figure 7, subsidies do not increase the representation of Black dynasties in 2040 as much as transfers do. Consistent with the evolution of the average wealth gap, subsidies are more powerful than transfers in generating equal representation of Black

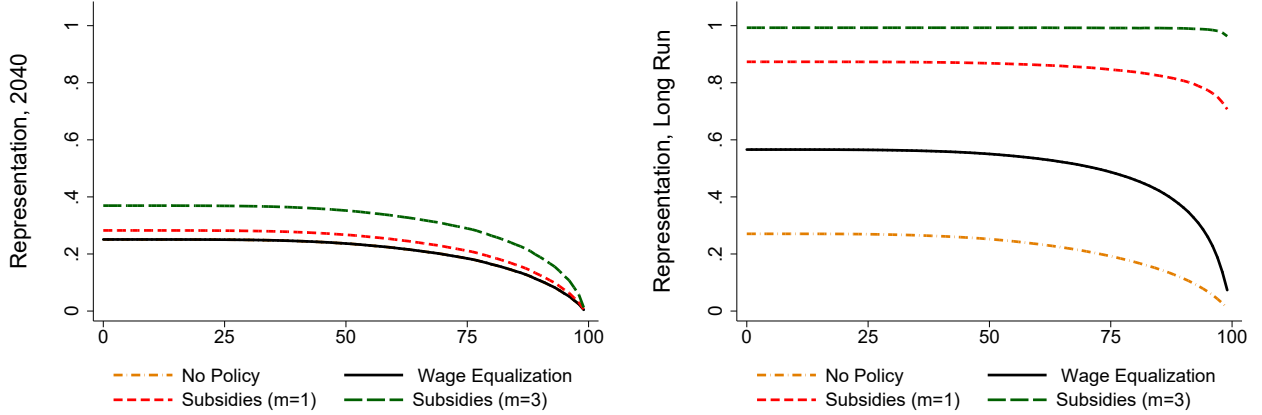


Figure 8: Representation in Wealth: Subsidies

Figure 8 shows representation in equation (26) as a function of the percentile of the wealth distribution in 2040 and the long run. In each panel, we demonstrate the index under no policy changes (orange dot-dashed line), after eliminating the racial wage gap in 2040 (black solid line), after eliminating the racial wage gap and providing investment subsidies financed with progressive wealth taxes in 2040 (red dashed line), and after eliminating the racial wage gap and providing larger investment subsidies financed with progressive wealth taxes in 2040 (green long-dashed line).

dynasties in the long run. In fact, with $m = 3$, Black dynasties are equally represented in wealth in the long run.

4.3 Learning from Others' Experiences

An alternative possibility for the convergence of wealth is that Black dynasties learn from others' experiences after reparations. To understand the importance of networks for the speed of learning and the convergence of wealth, we let dynasties learn from others' experiences. Our formulation of learning from others is that dynasties observe outcomes of other dynasties around them, which we label "friends." Every dynasty has a number of own-race friends F^o and a number of cross-race friends F^c . The number of friends is the number of additional experiences that each dynasty potentially observes in a given period, in addition to its own experience. Dynasties observe the entrepreneurial experiences of friends who are entrepreneurs but do not learn from friends who are laborers. As in our baseline model, dynasties do not learn from aggregate variables.³⁰

³⁰We formalize learning as follows. Friends of dynasty ι are denoted f_ι . To construct the set of friends, we order dynasties along a unit circle and denote a dynasty's location by $\iota \in \mathbb{I} \equiv [0, 1]$. Dynasties in the interval $\mathbb{I}^w \equiv [0, \phi]$ are White, while dynasties in the interval $\mathbb{I}^b \equiv [\phi, 1]$ are Black. Similarly, every dynasty has an identity $\iota^h \in [0, 1]$ along a race-specific unit circle, where $\iota^w \equiv \frac{\iota}{\phi}$ for every $\iota \in \mathbb{I}^w$ and $\iota^b \equiv \frac{\iota - \phi}{1 - \phi}$ for every $\iota \in \mathbb{I}^b$. Friends are drawn

Table 14: Learning from Others' Experiences After Reparations

	Friends		Wealth Ratio (Black/White)		
	F^o	F^c	2040	2100	∞
1.	0	0	1.00	0.54	0.52
2.	1	0	1.00	0.54	0.52
3.	2	0	1.00	0.53	0.55
4.	4	0	1.00	0.53	0.63
5.	10	0	1.00	0.52	0.94
6.	1	1	1.00	0.55	1.00

Table 14 presents the wealth ratio under wealth transfers financed with progressive taxes. Each dynasty has a number of own-race friendships F^o and a number of cross-race friendships F^c . The total number of friends equals the number of additional experiences that each dynasty observes in a given period, in addition to their own experience.

Table 14 summarizes our results when transfers are financed with progressive taxes. The first row repeats the baseline results without learning from others. In row 2, we allow dynasties to potentially observe the experience of one additional dynasty from their own race, $F^o = 1$. The next three rows increase the number of friends from a dynasty's own race F^o to 2, 4, and 10. When dynasties learn from the experiences of others, they update their beliefs at a faster rate toward the objective probability of success in entrepreneurship q^* . As the table shows, the wealth ratio increases as we increase the number of friends. To eliminate the racial wealth gap in the long run, the model requires more than 10 additional observations. As the wealth ratio in 2100 demonstrates, the speed of convergence is in all cases quite slow.

Another possibility is that dynasties learn from dynasties of the other race. In row 6 of Table 14, the racial wealth gap is eliminated after reparations if Black dynasties can observe at least one White dynasty. We interpret this result as showing the importance of interracial networks. To the extent that networks are amenable to policy or technological change, increased learning from others' experiences can complement reparations in closing the racial wealth gap.³¹

from the set of dynasties who are within distance d on the circle. By construction, the friendships are not mutual. Dynasties draw F^o friends along the circle specific to their race, $f_i^o \sim U([l^h, l^h + d]^{F^o})$, and F^c friends along the circle for the cross-race, $f_i^c \sim U([l^h, l^h + d]^{F^c})$. For White dynasties, the identities of friends along the unit circle are given by the union $f_i = \phi f_i^o \cup (\phi + (1 - \phi)f_i^c)$, while for Black dynasties, friends are $f_i = \phi f_i^c \cup (\phi + (1 - \phi)f_i^o)$.

³¹An example of such a policy is the Gates Scholarship, which is geared toward outstanding minority students

5 Conclusion

In this paper, we develop a dynamic, quantitative framework that helps us understand the historical origins of the racial wealth gap and policies that can affect this gap in the future. The model features heterogeneous dynasties, an occupational choice, and bequests, all of which are standard elements in the wealth inequality literature. To these elements, we add learning about risky returns. Our model features endogenous dispersion of beliefs about risky returns, as some dynasties learn from investment experiences of previous generations while other dynasties do not because their members are laborers. Methodologically, our model contributes to the wealth inequality literature by highlighting the importance of heterogeneous expected returns for wealth accumulation and inequality.

We reach a positive answer to the first question we pose: “Under the assumption of no innate racial differences in ability, preferences, or beliefs, to what extent can we account for the magnitude and persistence of the racial wealth gap when feeding into our model the history of exclusions that prevented Black households from participating in labor and capital markets?” When we feed historical events that exclude Black dynasties from labor and capital markets into the model, we find that it is consistent with salient features of the data such as current and historical racial gaps in wealth, income, entrepreneurship, and mobility. We also present evidence that suggests there exists a racial gap in beliefs about risky returns and show that our model is consistent with such a gap.

We reach a negative answer to the second question we pose: “Will reparations today, in the form of direct wealth transfers to Black households, eliminate the racial wealth gap in the long run?” Transfers eliminating the racial wealth gap today do not generate convergence of wealth and welfare and an equal representation in the long run. The logic of the divergence result is that centuries-long exclusions lead members of Black dynasties to enter into the reparations era with pessimistic beliefs about risky returns and to forgo risky investment opportunities. Thus, wealth transfers do not compensate appropriately for historical exclusions, because in the absence

from low-income backgrounds by the Bill & Melinda Gates Foundation. The Foundation organizes a Summer Institute and uses an online platform to enable current and former recipients to directly connect with and learn from one another.

of exclusions there would be no racial gaps in our model. However, there are alternative policies that can change the future trajectory of the racial gaps in our model. We show that investment subsidies toward Black dynasties can achieve convergence of racial outcomes in the long run. We also highlight the possibility that dynasties may learn faster after reparations if information networks are stronger than they were in the past. Stronger networks can complement other forms of reparations to eliminate racial gaps in the future.

References

- AARONSON, D., AND B. MAZUMDER (2008): “Intergenerational Economic Mobility in the United States, 1940 to 2000,” *Journal of Human Resources*, 43(1), 139–172.
- AIZER, A., R. BOONE, A. LLERAS-MUNEY, AND J. VOGEL (2020): “Discrimination and Racial Disparities in Labor Market Outcomes: Evidence from WWII,” NBER Working Paper No. 27689.
- ALESINA, A., S. STANTCHEVA, AND E. TESO (2018): “Intergenerational Mobility and Preferences for Redistribution,” *American Economic Review*, 108(2), 521–554.
- ALIPRANTIS, D., D. CARROLL, AND E. YOUNG (2019): “The Dynamics of the Racial Wealth Gap,” FRB of Cleveland Working Paper No. 19-18.
- ASHMAN, H., AND S. NEUMULLER (2020): “Can Income Differences Explain the Racial Wealth Gap? A Quantitative Analysis,” *Review of Economic Dynamics*, 35, 220–239.
- BACH, L., L. CALVET, AND P. SODINI (2020): “Rich Pickings? Risk, Return, and Skill in Household Wealth,” *American Economic Review*, 110(9), 2703–2747.
- BAYER, P., AND K. CHARLES (2018): “Divergent Paths: A New Perspective on Earning Differences Between Black and White Men Since 1940,” *Quarterly Journal of Economics*, 133(3), 1459–1501.
- BENHABIB, J., A. BISIN, AND M. LUO (2019): “Wealth Distribution and Social Mobility in the US: A Quantitative Approach,” *American Economic Review*, 109(5), 1623–1647.
- BENHABIB, J., A. BISIN, AND S. ZHU (2011): “The Distribution of Wealth and Fiscal Policy in Economies with Finitely Lived Agents,” *Econometrica*, 79(1), 123–157.

- BLAU, F., AND J. GRAHAM (1990): “Black-White Differences in Wealth and Asset Composition,” *Quarterly Journal of Economics*, 105(2), 321–339.
- BLEAKLEY, H., AND J. FERRIE (2016): “Shocking Behavior: Random Wealth in Antebellum Georgia and Human Capital Across Generations,” *Quarterly Journal of Economics*, 131(3), 1455–1495.
- BOGAN, V., AND W. DARITY (2008): “Culture and Entrepreneurship? African American and Immigrant Self-Employment in the United States,” *Journal of Socio-Economics*, 37, 1999–2019.
- BOLT, J., AND J. L. VAN ZANDEN (2020): “Maddison Style Estimates of the Evolution of the World Economy. A New 2020 Update,” Maddison-Project Working Paper WP-15.
- BROUILLETTE, J.-F., C. JONES, AND P. KLENOW (2021): “Race and Economic Well-Being in the United States,” Stanford University Working Paper.
- BUERA, F., A. MONGE-NARANJO, AND G. PRIMICERI (2011): “Learning the Wealth of Nations,” *Econometrica*, 79(1), 1–45.
- CAGETTI, M., AND M. DE NARDI (2006): “Entrepreneurship, Frictions, and Wealth,” *Journal of Political Economy*, 114(5), 835–870.
- CHITEJI, N., AND F. STAFFORD (1999): “Portfolio Choices of Parents and their Children as Young Adults: Asset Accumulation by African-American Families,” *American Economic Review*, 89, 377–380.
- COLLINS, W., AND M. WANAMAKER (2017): “Up From Slavery? African American Intergenerational Economic Mobility Since 1880,” NBER Working Paper No. 23395.
- COOK, L. (2014): “Violence and Economic Activity: Evidence from African American Patents, 1870-1940,” *Journal of Economic Growth*, 19, 221–257.
- DARITY, W., AND D. FRANK (2003): “The Economics of Reparations,” *American Economic Review Papers & Proceedings*, 93(2), 326–329.
- DARITY, W., AND K. MULLEN (2020): *From Here to Equality: Reparations for Black Americans in the Twenty-First Century*. University of North Carolina Press.
- DE NARDI, M. (2004): “Wealth Inequality and Intergenerational Links,” *Review of Economic Studies*, 71, 743–768.

- DE NARDI, M., AND G. FELLA (2017): “Saving and Wealth Inequality,” *Review of Economic Dynamics*, 26, 280–300.
- DERENONCOURT, E., C. H. KIM, M. KUHN, AND M. SCHULARICK (2022): “The Racial Wealth Gap, 1860-2020,” Princeton University Working Paper.
- DERENONCOURT, E., AND C. MONTIALOUX (2021): “Minimum Wages and Racial Inequality,” *Quarterly Journal of Economics*, 136(1), 169–228.
- DOEPKE, M., AND F. ZILIBOTTI (2008): “Occupational Choice and the Spirit of Capitalist,” *Quarterly Journal of Economics*, 123(2), 747–793.
- DOMINITZ, J., AND C. MANSKI (2011): “Measuring and Interpreting Expectations of Equity Returns,” *Journal of Applied Econometrics*, 26(3), 352–370.
- DYNAN, K., J. SKINNER, AND S. ZELDES (2004): “Do the Rich Save More?,” *Journal of Political Economy*, 112(2), 397–444.
- FAGERENG, A., L. GUISO, D. MALACRINO, AND L. PISTAFERRI (2020): “Heterogeneity and Persistence in Returns to Wealth,” *Econometrica*, 88(1), 115–170.
- FAGERENG, A., M. B. HOLM, B. MOLL, AND G. NATVIK (2019): “Saving Behavior Across the Wealth Distribution: The Importance of Capital Gains,” London School of Economics Working Paper.
- FAIRLIE, R., AND B. MEYER (2000): “Trends in Self-Employment among White and Black Men During the Twentieth Century,” *Journal of Human Resources*, 35(4), 643–669.
- FAIRLIE, R., A. ROBB, AND D. ROBINSON (2020): “Black and White: Access to Capital among Minority-Owned Startups,” NBER Working Paper No. 28154.
- FERNANDEZ, R. (2013): “Cultural Change as Learning: The Evolution of Female Labor Force Participation over a Century,” *American Economic Review*, 103(1), 472–500.
- FOGLI, A., AND L. VELDKAMP (2011): “Nature or Nurture? Learning and the Geography of Female Labor Force Participation,” *Econometrica*, 79(4), 1103–1138.
- GABAIX, X., J.-M. LASRY, P.-L. LIONS, AND B. MOLL (2016): “Heterogeneity and Persistence in Returns to Wealth,” *Econometrica*, 84(6), 2071–2111.

- GUIO, L., P. SAPIENZA, AND L. ZINGALES (2008): “Social Capital as Good Culture,” *Journal of the European Economic Association*, 6(2-3), 295–320.
- HIGGS, R. (1982): “Accumulation of Property by Southern Blacks Before World War I,” *American Economic Review*, 72(4), 725–737.
- HSIEH, C.-T., E. HURST, C. JONES, AND P. KLENOW (2019): “The Allocation of Talent and U.S. Economic Growth,” *Econometrica*, 87(5), 1439–1474.
- JORDÀ, Ò., K. KNOLL, D. KUVSHINOV, M. SCHULARICK, AND A. TAYLOR (2019): “The Rate of Return on Everything, 1870–2015,” *Quarterly Journal of Economics*, 134(3), 1225–1298.
- KERMANI, A., AND F. WONG (2021): “Racial Disparities in Housing Returns,” NBER Working Paper No. 29306.
- KUHN, M., M. SCHULARICK, AND U. STEINS (2020): “Income and Wealth Inequality in America, 1949–2016,” *Journal of Political Economy*, 128(9), 3469–3519.
- KUVSHINOV, D., AND K. ZIMMERMANN (2021): “The Expected Return on Risky Assets: International Long-run Evidence,” CEPR Discussion Paper 15610.
- LOURY, G. (1977): “A Dynamic Theory of Racial Income Differences,” in *Women, Minorities, and Employment Discrimination*, ed. by P. A. Wallace, and A. LaMond, pp. 153–186. Lexington Books.
- MALMENDIER, U., AND S. NAGEL (2016): “Learning from Inflation Experiences,” *Quarterly Journal of Economics*, 131(1), 53–87.
- MARGO, R. (1984): “Accumulation of Property by Southern Blacks Before World War I: Comment and Further Evidence,” *American Economic Review*, 74(4), 768–776.
- (2016): “Obama, Katrina, and the Persistence of Racial Inequality,” *Journal of Economic History*, 76(2), 301–341.
- NEAL, L. (1990): “A Calculation and Comparison of the Current Benefits of Slavery and the Analysis of Who Benefits,” in *The Wealth of Races*, ed. by R. F. America, pp. 91–106. Westport, CT: Greenwood Press.
- PIKETTY, T. (1995): “Social Mobility and Redistributive Politics,” *Quarterly Journal of Economics*, 110(3), 551–584.

- QUADRINI, V. (2000): “Entrepreneurship, Saving, and Social Mobility,” *Review of Economic Dynamics*, 3(1), 1–40.
- SAEZ, E., AND G. ZUCMAN (2016): “Wealth Inequality in the United States since 1913: Evidence from Capitalized Income Tax Data,” *Quarterly Journal of Economics*, 131(2), 519–578.
- SCHMELZING, P. (2020): “Eight Centuries of Global Real Interest Rates, R-G, and the “Suprasecular” Decline, 1311-2018,” Bank of England Working Paper.
- SMITH, M., O. ZIDAR, AND E. ZWICK (2020): “Top Wealth in America: New Estimates and Implications for Taxing the Rich,” Princeton University Working Paper.
- STRAUB, L. (2019): “Consumption, Savings, and the Distribution of Permanent Income,” Harvard University Working Paper.