

DISCUSSION PAPER SERIES

DP15131

SLUMS AND PANDEMICS

Luiz Brotherhood, Tiago Cavalcanti, Daniel Da Mata
and Cezar Santos

DEVELOPMENT ECONOMICS

MACROECONOMICS AND GROWTH



SLUMS AND PANDEMICS

Luiz Brotherhood, Tiago Cavalcanti, Daniel Da Mata and Cezar Santos

Discussion Paper DP15131
Published 05 August 2020
Submitted 01 August 2020

Centre for Economic Policy Research
33 Great Sutton Street, London EC1V 0DX, UK
Tel: +44 (0)20 7183 8801
www.cepr.org

This Discussion Paper is issued under the auspices of the Centre's research programmes:

- Development Economics
- Macroeconomics and Growth

Any opinions expressed here are those of the author(s) and not those of the Centre for Economic Policy Research. Research disseminated by CEPR may include views on policy, but the Centre itself takes no institutional policy positions.

The Centre for Economic Policy Research was established in 1983 as an educational charity, to promote independent analysis and public discussion of open economies and the relations among them. It is pluralist and non-partisan, bringing economic research to bear on the analysis of medium- and long-run policy questions.

These Discussion Papers often represent preliminary or incomplete work, circulated to encourage discussion and comment. Citation and use of such a paper should take account of its provisional character.

Copyright: Luiz Brotherhood, Tiago Cavalcanti, Daniel Da Mata and Cezar Santos

SLUMS AND PANDEMICS

Abstract

This paper studies the role of slums in shaping the economic and health dynamics of pandemics. Using data from millions of mobile phones in Brazil, an event-study analysis shows that residents of overcrowded slums engaged in less social distancing after the outbreak of Covid-19. We develop a choice-theoretic equilibrium model in which poorer agents live in high-density slums and others do not. The model is calibrated to Rio de Janeiro. Slum dwellers account for a disproportionately high number of infections and deaths. In a counterfactual scenario without slums, deaths fall overall but increase in non-slum neighborhoods. Policy simulations indicate that: reallocating medical resources cuts deaths and raises output and the welfare of both groups; mild lockdowns favor slum individuals by mitigating the demand for hospital beds whereas strict confinements mostly delay the evolution of the pandemic; and cash transfers benefit slum residents in detriment of others, highlighting important distributional effects.

JEL Classification: E17, I10, I18, D62, O18, C63

Keywords: COVID-19, Slums, health, Social distancing, Public Policies

Luiz Brotherhood - brotherhoodluiz@gmail.com
Universitat de Barcelona

Tiago Cavalcanti - tvdvc2@cam.ac.uk
University of Cambridge, Sao Paulo School of Economics and CEPR

Daniel Da Mata - daniel.damata@fgv.br
Sao Paulo School of Economics - FGV

Cezar Santos - cezarsantos.econ@gmail.com
Bank of Portugal, FGV EPGE and CEPR

Slums and Pandemics*

Luiz Brotherhood

Tiago Cavalcanti
Cezar Santos

Daniel Da Mata

July 28, 2020

Abstract

This paper studies the role of slums in shaping the economic and health dynamics of pandemics. Using data from millions of mobile phones in Brazil, an event-study analysis shows that residents of overcrowded slums engaged in less social distancing after the outbreak of Covid-19. We develop a choice-theoretic equilibrium model in which poorer agents live in high-density slums and others do not. The model is calibrated to Rio de Janeiro. Slum dwellers account for a disproportionately high number of infections and deaths. In a counterfactual scenario without slums, deaths fall overall but increase in non-slum neighborhoods. Policy simulations indicate that: reallocating medical resources cuts deaths and raises output and the welfare of both groups; mild lockdowns favor slum individuals by mitigating the demand for hospital beds whereas strict confinements mostly delay the evolution of the pandemic; and cash transfers benefit slum residents in detriment of others, highlighting important distributional effects.

Keywords: Covid-19, slums, health, social distancing, public policies

JEL codes: E17, I10, I18, D62, O18, C63

*This is a preliminary version of an evolving project—feedback highly appreciated. Financial support from the Coordenação de Aperfeiçoamento de Pessoal de Nível Superior—Brasil (CAPES)—Finance Code 001 and Faperj is gratefully acknowledged. Caio Castro, Bruna Mirelle and Pedro Ogeda provided excellent research assistance. The views expressed in this article are those of the authors and do not necessarily represent those of Banco de Portugal or the Eurosystem. Brotherhood: Universitat de Barcelona & FGV EPGE (email: brotherhoodluiz@gmail.com), Cavalcanti: University of Cambridge, Sao Paulo School of Economics - FGV & CEPR (email: tvdvc2@cam.ac.uk), Da Mata: Sao Paulo School of Economics - FGV (email: daniel.damata@fgv.br), Santos: Banco de Portugal, FGV EPGE & CEPR (email: cezarsantos.econ@gmail.com)

“The issue is that everything is so close together here. One house next to the other; one on top of the other. What looks like only a small one is actually five or six in the same space. A lot of people here work outside of Paraisopolis. If the virus spreads here, it will spread all over Sao Paulo.” Hebert Douglas, resident of Paraisopolis, one of the largest slums in Brazil (Folha de São Paulo 2020)

1 Introduction

Disease outbreaks can affect vulnerable people disproportionately, contributing to the increase in health and economic disparities. Since its onset, the Covid-19 pandemic has affected places where most social interactions occur, as the new coronavirus spreads mainly through close contact among people. Consequently, health authorities recommend people to avoid crowded areas and practice social distancing. Such measures can be challenging to put in practice in densely populated areas, such as overcrowded slums in developing countries.¹ Residents of these neighborhoods are also poorer individuals whose incomes are likely to be more adversely affected by lockdowns. Slums are prevalent in the majority of cities in developing countries and over one billion people in the world live in them (United Nations (2020)). Despite their importance, to the best of our knowledge, no paper in the growing literature on the economics of epidemics has addressed the role of slums in shaping the economic and health dynamics of pandemics. This paper fills this gap and makes three contributions.

Our first contribution is empirical. We use daily geo-localized data from millions of mobile phones in Sao Paulo and Rio de Janeiro, the two largest cities in Brazil, one of the countries most affected by the Covid-19 pandemic.² Through an event-study analysis, we show that social distancing increased significantly

¹The definition of slums varies by country, but is always associated with deprivation-related characteristics such as low-quality housing, lack of public services, overcrowding, and lack of tenure security.

²The data on social distancing was shared by Inloco (<https://inloco.com.br/>), a Brazilian technology company. See Section 2 for details.

less in areas with slums after the adoption of nonpharmaceutical interventions (NPIs) in both of these cities. We also find that areas with slums are associated with more hospitalizations and fatalities.

The second contribution is theoretical. We build a model with heterogeneous housing tenure and behavioral choices to address how the prevalence of slums contributes to the spread of infectious diseases. Agents live in two different localities: poorer agents live in high-density places (slums) compared to richer agents. Slum residents are also less likely to have access to intensive care units (ICUs) in hospitals. People leave their houses to work or enjoy leisure outside and this can lead to infections. Individuals from different locations interact when they leave their home. The model allows for both negative and positive externalities regarding social distancing. The risks that one group takes might spill over onto others through increased transmission (negative externality) but the point of herd immunity may be reached more quickly (positive externality).

The paper's third contribution is quantitative. We parameterize the model to be consistent with Covid-19 transmission and with key empirical moments of the city of Rio de Janeiro, one of the epicenters of the pandemic in Brazil. The model reproduces our empirical finding that, after the outbreak of the pandemic, low-income slum residents engage in less social distancing relative to individuals who live in other neighborhoods. As they are poorer, they work relatively more hours even though they need to spend more time in crowded areas. This leads to worse health outcomes for this group. Although slum dwellers correspond to 22% of Rio de Janeiro's population, they account for more than one third of the Covid-19 deaths in the city. This group thus contributes more towards reaching herd immunity in society. In a counterfactual world without slums, residents in other neighborhoods end up catching the virus more and die in higher numbers, which illustrates important distributional effects.

We use the model to simulate a variety of policy experiments: the reallocation of existing medical resources, shelter-at-home policies, and cash-transfer schemes. In developing countries, most poor individuals do not have private health insurance and must rely on publicly-provided health care that is often at

capacity. We investigate the pooling of all intensive care units in Rio de Janeiro into one group that is offered to anyone who needs it, regardless of insurance. This alleviates the capacity constraints and decreases the death burden of the disease among both groups of the population. The total death rate is reduced by 23% relative to an environment with no policies. In our simulations, this redistributive policy positively impacts aggregate welfare and output.

Shelter-at-home policies act to delay the dynamics of the disease substantially. In our model, though these policies buy time, the long-run death rate does not change much. Interestingly, lighter policies can be more effective as they slowly increase the number of infected, and this smooths the burden on hospital resources and saves lives. On the other hand, very strict lockdowns contain the disease so much that, when lifted, the health dynamics is quite similar to a no-policy scenario, only delayed—if no improvement in health infrastructure takes place or a treatment becomes available. In addition, strict lockdowns promote a deep economic downturn in the short run. Confinement policies that shelter one particular group lead to a redistribution of deaths from the sheltered group to the other. This actually leads the welfare of both groups to decrease: one faces more deaths and the other a restriction on their movement.

Cash transfers are particularly important for the poorer individuals that live in slums. When we implement a policy that hands over cash to the population, slum dwellers can afford to become relatively more cautious. This decreases the number of infections among this group and consequently increases this statistic among those living in other neighborhoods. Once again, the resulting outcome highlights important heterogeneous effects across groups.

This paper relates to the economics literature that add behavioral choices to epidemiological models in the tradition of Kermack and McKendrick (1927). This effort has been mostly theoretical; e.g. Kremer (1996) and Quercioli and Smith (2006). There exists some quantitative articles in the context of HIV / AIDS, such as Greenwood et al. (2017, 2019) and Chan, Hamilton, and Papageorge (2016). Our paper shares the principle of modeling infectious diseases with a special attention to behavioral choices. We contribute to this literature by studying

individual choices in slums, which are an important feature in cities in the majority of developing countries.

There has recently been a great incursion of the economics literature into the study of the Covid-19 pandemic. Some papers have looked at optimal confinement policies that force stricter levels of social distancing beyond what individuals endogenously choose, e.g. Farboodi, Jarosch, and Shimer (2020) and Eichenbaum, Rebelo, and Trabandt (2020). A few papers have added choices made by heterogeneous groups, like different sectors (Kaplan, Moll, and Violante (2020)) or age groups (Brotherhood et al. (2020) and Favero, Ichino, and Rustichini (2020)). Our work is mostly related to Brotherhood et al. (2020) and Alon et al. (2020). We expand the framework developed by Brotherhood et al. (2020) by adding different locations (slums and other neighborhoods), poorer and richer agents, and differential access to health care. Few quantitative papers focus on studying the Covid-19 pandemic in developing countries. One notable exception is Alon et al. (2020), but they do not model slums and the impact of high-density environments as we do.

We are also related to two strands of the urban economics literature. First, we connect to the papers on agglomeration economies aiming to understand the advantages and disadvantages of density in cities (Duranton and Puga (2004), Ahlfeldt et al. (2015)). Most of the papers in this field focus on the advantages of density and increased physical proximity (e.g., sharing ideas, fostering innovation, or faster technology adoption). We add to some recent papers studying the costs of agglomeration (e.g., Combes, Duranton, and Gobillon (2019)) by explicitly taking into account externalities of physical proximity in the context of a pandemic. Second, we add to the strand modeling the causes and consequences of slums (e.g., Brueckner and Selod (2009), Monge-Naranjo, Ferreira, and Pereira (2018), Cavalcanti, Da Mata, and Santos (2019), Henderson et al. (2020)) by taking into account the role of slums during disease outbreaks.

This paper is organized as follows. The next section presents an empirical analysis regarding how the Covid-19 pandemic evolved differently in slums and other areas in Brazil. Section 3 describes the model environment and Section 4

discusses its calibration. Section 5 discusses our baseline results and Section 6 provides results for policy experiments. Section 7 concludes.

2 Empirical Motivation

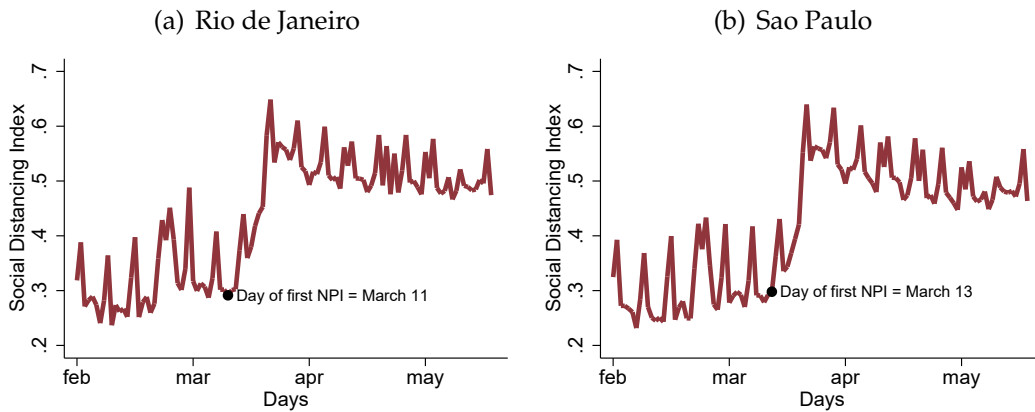
Slums are densely populated areas with narrow alleys and small houses. Some informal settlements lack adequate sanitation and piped water supply. Poverty is widespread. According to the 2010 Brazilian Population Census, the population density in slums in the cities of Rio de Janeiro and Sao Paulo is approximately five times larger than in other neighborhoods. In addition, per capita income of households living in slums in these two cities is roughly three times lower than for those living in other areas. These features of slums imply that movement restrictions are in general more costly for individuals living in slums compared to those living in other neighborhoods.

In order to investigate how social distancing changed during the pandemic in areas with and without slums, we use a social distancing index created and developed by Inloco (<https://inloco.com.br/>), a Brazilian technology company. The company collects anonymized location data from millions of mobile phones in Brazil, tracking (with a 3-meter precision) the devices' location and movements to different places, but ensuring user privacy.³ The company divides cities into non-overlapping "hexagons" and measures the percentage of devices in a given hexagon that remained within a radius of 450 meters of the location identified as home. The index is computed daily and ranges from zero to one. We obtained the social distancing index for each hexagon from February 1 to May 30, 2020 (120 days) for two cities: Rio de Janeiro and Sao Paulo. There are 841 hexagons in Rio de Janeiro and 1,301 hexagons in Sao Paulo (see Figures A1 and A2 in Appendix A for more details on the non-overlapping hexagons).

We define slums as housing units in "subnormal agglomerations". According

³See Peixoto et al. (2020) for more details on the Inloco data. Ajzenman, Cavalcanti, and Da Mata (2020) compare Inloco's and Google's social distancing indexes for Brazil and show a high correlation between the two measures.

Figure 1: Social distancing index



Notes. The figure shows the evolution of the social distancing index for the cities of Rio de Janeiro and Sao Paulo between February 1 and May 18. The first Non-Pharmaceutical Intervention in Rio de Janeiro was put in place on March 11 and in Sao Paulo on March 13.

to the Population Census, a subnormal agglomeration satisfies three conditions: (i) it consists of a group of at least 50 housing units, (ii) where land is occupied illegally, and (iii) is urbanized in a disordered pattern and/or lacks basic public services such as sewage or electricity. Notice that there is a connection between housing units in “subnormal agglomeration” and the notion of a “slum”. See online Appendix A for more detail on data sources and definitions.

Fact 1: Social distancing increased after Non-Pharmaceutical Interventions (NPIs)

Figure 1 contains the daily average social distancing index for the cities of Rio de Janeiro (Figure 1(a)) and Sao Paulo (Figure 1(b)). It shows that social distancing increased in both cities after NPIs were implemented. The first NPI affecting the city of Rio de Janeiro was announced on March 11. One can observe a sharp increase in the social distancing index just a few days after this measure was implemented. A similar pattern is observed for Sao Paulo, where the first NPI was announced on March 13.

Fact 2: In slums, social distancing increased less after the adoption of NPIs

We now present reduced-form evidence showing an association between social

distancing and slums. The unit of investigation is the hexagon provided by In-loco. We built a dataset of socioeconomic characteristics for each hexagon based on the census tracts of 2010 Population Census conducted by the country’s statistical office (*Instituto Brasileiro de Geografia e Estatística*, IBGE)—see Appendix A for more details—and combine this dataset with our social distancing index. We then calculate the number of housing units in slums in each hexagon. We create a dummy variable that equals one if the hexagon has any slum within its boundaries and zero otherwise. There are 510 hexagons with slums in Rio de Janeiro, and 598 in Sao Paulo (see Figure A3 in online Appendix A for the location of those hexagons). The “treated group” is composed of hexagons with slums, while the comparison group is composed of hexagons without slums.

In order to investigate how social distancing evolved in slums compared to the other areas after the implementation of NPIs, we use the following event-study specification:

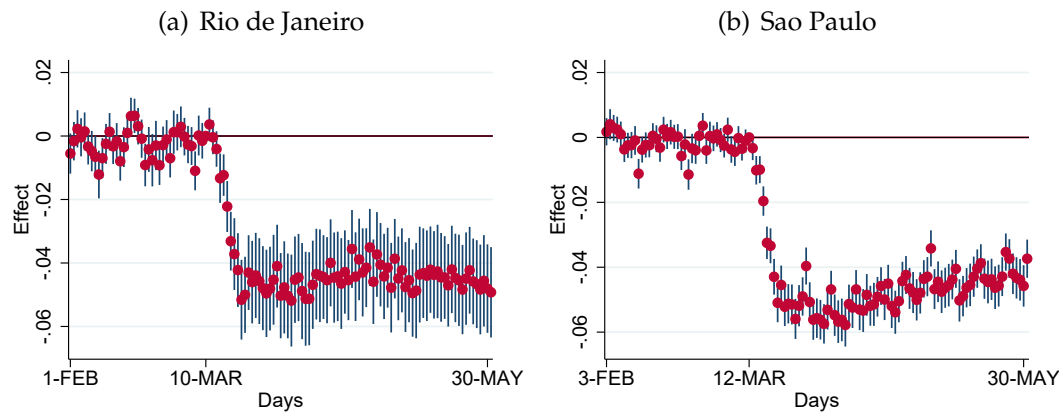
$$Y_{ht} = \left[\sum_{\tau=-K}^{-2} \beta_{\tau} I(t_t - t^* = \tau) + \sum_{\tau=0}^L \beta_{\tau} I(t_t - t^* = \tau) \right] + \omega_h + \delta_t + \epsilon_{ht}. \quad (1)$$

where Y_{ht} is the social distancing index for hexagon h on day t . The hexagon fixed effect ω_h accounts for unobserved time-invariant determinants of social distancing, while the inclusion of time fixed effects δ_t adjusts for shocks that are common to all hexagons at a specific moment in time. The indicator variable $I(t_t - t^* = \tau)$ captures the relative change in the social distancing index in hexagons with slums to the day of the first NPI, t^* . We set the coefficient on β_{-1} equal to zero to use the day before the first NPI as the base date—March 10 in Rio de Janeiro and March 12 in Sao Paulo.⁴ As the social distancing index is bounded between 0 and 1, each coefficient β should be interpreted as a change in percentage points. We cluster the standard errors at the hexagon level and weight the observations by the hexagon population in 2010.⁵ The identifying

⁴Since we have data for 120 days starting from Feb 1, there are 39 and 41 pre-treatment periods in Rio de Janeiro and Sao Paulo, respectively.

⁵Figure B4 in Appendix B shows that results are qualitatively similar when we do not use population weights, but the point regression coefficients are less precisely estimated.

Figure 2: Event-Study Analysis: effect of NPIs on social distancing in areas with slums relative to those without slums



Notes. The figure shows the results for coefficients estimated from Equation (1). Coefficients should be interpreted as a change in percentage points. The treated dummy equals one for hexagons with at least one housing unit in a slum. We use 841 hexagons in Rio de Janeiro and 1,301 hexagons in Sao Paulo. Data are provided at the hexagon-day level. The base period corresponds to the day before each NPI. The dependent variable is the social distancing index for hexagon h on day d . Standard Errors clustered at the hexagon level. Confidence intervals: 95%.

assumption is that in the period of analysis hexagons with slums would have had similar trends in social distancing (compared to hexagons without slums) in the absence of NPIs.

Figure 2 shows the results of the event-study analysis. Hexagons with and without slums evolved similarly during the period before the NPIs in both cities. This suggests the absence of different pre-trends in social distancing and yields support for the main identifying assumption. After the first NPI, there is a sharp decline in social distancing (of about 4–5 percentage points) in hexagons with slums, compared to those without slums.⁶ Indeed, the results of a difference-in-difference strategy in Table B1 in online Appendix B show a (statistically significant) average reduction of the social distancing index of 3.9 and 4.3 percentage points in slum areas in Rio de Janeiro and Sao Paulo,

⁶Figure B5 in Appendix B shows the results when we change the treatment dummy for the share of slums in each hexagon. The qualitative implications are the same.

respectively.⁷

The adherence of individuals to social distancing measures is quite different in areas with and without slums. Interestingly, the magnitude of the treatment effect is similar in both Rio de Janeiro and Sao Paulo, but the coefficients are more precisely estimated for the latter.

Fact 3: More Covid-19 deaths in areas with slums than areas without slums.

The risk of Covid-19 transmission is higher in overcrowded areas that lack access to basic sanitation and running water. Those are precisely some of the characteristics of urban slums. In addition, one might expect that health facilities would be more congested in areas near slums. People in slums should have less access to private health providers.⁸ Therefore, we should expect more Covid-related deaths in areas with slums than in other neighborhoods.

Figure 3 provides descriptive evidence suggesting that places in Rio de Janeiro and in Sao Paulo with more slums experienced more Covid-19 deaths.⁹ For the city of Sao Paulo, there are geo-referenced data on hospitalizations and deaths caused by Covid-19 and other acute respiratory diseases (see Appendix A). We matched the geo-referenced data into hexagons to check the correlation between slums and hospitalizations/deaths. Due to constraints on the availability of data, we cannot conduct this analysis using the event-study specification. We then use the following cross-sectional specification:

$$Y_h = \alpha + \tau I_h + \epsilon_d,$$

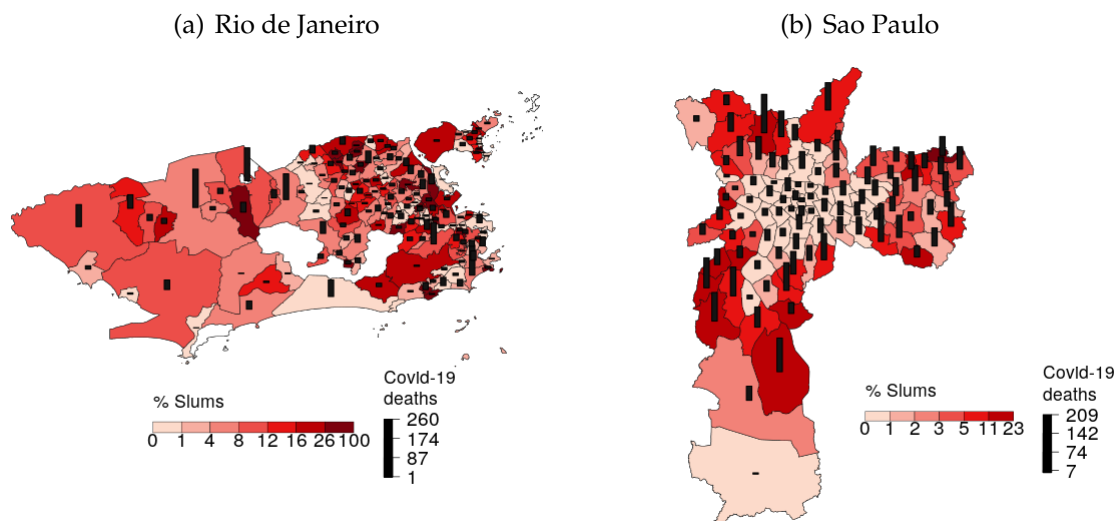
where Y_h is the outcome variable (hospitalizations or deaths) for each hexagon h and I_h equals to one for hexagons with slums and zero otherwise. The results reveal statistically significant and positive correlations: hexagons with slums

⁷In column (III) of Table B1 in Appendix B, we perform a “triple-difference” strategy and show that the reduction in social distancing index was 0.43 percentage points lower in Rio de Janeiro compared to Sao Paulo (but statistically not significant).

⁸Approximately 15% and 22% of the overall population have access to private health insurance in Rio de Janeiro and Sao Paulo, respectively.

⁹Figure 3 uses Covid-19 death data at the neighborhood level (which is a group of hexagons) as this is the most disaggregated level officially reported by both cities.

Figure 3: Slums and Covid-19 deaths



Notes. The figure shows Covid-19 deaths for the cities of Rio de Janeiro on June 14 and Sao Paulo on May 25. The percentage of slums in each area is from the 2010 Population Census.

have 11% more hospitalizations and 10% more deaths by Covid-19—and 36% hospitalizations and 7% more deaths by other respiratory diseases (see Table B2 in Appendix B).¹⁰

3 Model

In this section, we present the model to study the role of slums in shaping the economic and health dynamics of the Covid-19 pandemics. Assume a model economy that evolves in discrete time.¹¹ Suppose there are two different group of agents in this economy: those who live in slums (or *favelas*), $g = f$, and others who do not, $g = o$. Agents work, enjoy leisure outside their home and home hours. Home hours can also be seen as a proxy for home production. In the presence of the new coronavirus, denote the agent’s status by j . A healthy agent

¹⁰Serological tests in Brazilian slums support the claim that Covid-19 infections are higher in slums and exceed official data (Prefeitura Rio de Janeiro (2020)).

¹¹Our model builds on the framework developed by Brotherhood et al. (2020).

is denoted by $j = h$. By spending time outside the house, the agent may catch Covid-19. If the agent becomes infected, he is denoted by $j = i$. Conditional on being infected, the agent may either recover (with probability $\phi(0)$) or develop more serious symptoms (with probability α). Denote an agent with serious symptoms with $j = s$. Someone with serious symptoms may either recover (with probability $\phi(1)$) or die (with probability $\delta_t(g)$). The death probability is time-varying as it may depend on the usage of scarce hospital resources. Such resources may also be different across the two groups. If an individual recovers ($j = r$), he is assumed to be immune to the disease forever. Agents discount the future with factor $\beta \in (0, 1)$.

An individual is endowed with one unit of time per period that may be used for work n , leisure outside the house ℓ and hours at home d (“domestic” hours). The time constraint thus reads:

$$n + \ell + d = 1. \tag{2}$$

An individual derives utility from consumption c , a composite leisure good when he leaves home a , and domestic hours d . The good a is produced using hours ℓ and buying “intermediate” goods x according to the function $a = a(x, \ell)$. We normalize the utility after death to zero and capture the bliss from being alive through a parameter b . The utility function is given by:

$$u(c, a, d; j, g, p) = \ln c + \gamma \ln a + [\lambda_d + \lambda(j) + \lambda_p(j, g)] \ln(d) + b.$$

The term $\lambda(j)$ expresses an additional preference for staying at home when being infected, and is supposed to capture some partial altruism. This variable can take two different levels: $\lambda(s) = \lambda(i) = \lambda_a$ and $\lambda(r) = \lambda(h) = 0$, so that individuals who can transmit the virus are partially altruistic and the others have no need for that. $\lambda_p(j, g)$ has a similar role, but from the point of view of the government.¹² This captures simple policies that confine all groups to staying at home ($\lambda_p(j, g) = \bar{\lambda}_p$) but can also capture group-specific confinements

¹²The subscript p denotes that $\lambda_p(j, g)$ is a policy instrument.

$(\lambda_p(j, g) = \bar{\lambda}_p(g))$, and could even condition on infection status.

An individual's income consists of two terms. The first is their labor income $w(g)n$. Note that the wage per unit of time can vary by group. The second term corresponds to government transfers and can be time-dependent. Denote it by $w_p(g)$. The budget constraint of the agent is given by:

$$c + x = w_p(g) + w(g)n. \quad (3)$$

A healthy individual ($j = h$) may become infected when he strays from home. The longer one spends outside, the more likely it is that an infection takes place. For each hour spent outside the house, the transmission risk is given by $\Pi_t(g)$. Note that this is time-varying as it depends on two aggregate variables: (i) the fraction of infected people in the economy; and (ii) the time infected people spend outside their houses. It can also be group-specific as individuals from different groups may be more exposed to one group versus the other, due to differences in the density in their neighborhood for instance. This will be elaborated on later. The probability of catching the virus in a given period t is given by:

$$\pi(n + \ell, \Pi_t(g)) = (n + \ell)\Pi_t(g). \quad (4)$$

Turn now to decision making. The problem of a healthy individual is described by the following maximization problem:

$$\begin{aligned} V_t(h, g) = & \max_{c, x, n, \ell, d} u(c, a(x, \ell), d; h, g, p_t) + \\ & \beta \{ [1 - \pi(n + \ell, \Pi_t(g))] V_{t+1}(h, g) + \pi(n + \ell, \Pi_t(g)) V_{t+1}(i, g) \} \\ & \text{subject to (2) and (3).} \end{aligned} \quad (5)$$

The first line in the above problem corresponds to the instantaneous utility from consumption and leisure. The second line spells out the continuation value. The first term in curly brackets represents the situation in which the individual does not get infected this period and continues life as a healthy person in the next period. The second term denotes the case in which the agent gets infected

today and continues life as an infected individual in the next period.

The value function for an infected person who has not developed severe symptoms of the disease is given by:

$$V_t(i, g) = \max_{c, x, n, \ell, d} u(c, a(x, \ell), d; i, g, p_t) + \beta \phi(0) V_{t+1}(r, g) + \beta(1 - \phi(0)) [\alpha V_{t+1}(s, g) + (1 - \alpha) V_{t+1}(i, g)] \quad (6)$$

subject to (2) and (3).

The first line captures the instantaneous utility from consumption and leisure and the situation in which the agent recovers from the disease. The second line is the continuation value in which the agent either develops serious symptoms (first term in square brackets) or continues life as an infected person (second term).

Set the flow utility for an individual with serious symptoms ($j = s$) to the same as death (i.e. zero). These individuals may still recover and enjoy utility from consumption, leisure and bliss of life later. These agents do not work, but we assume they interact with people in the hospital and may thus infect others. Set an exogenous amount of time they interact with their carers to $\ell = \bar{\ell}_s$. Their value function thus reads:

$$V_t(s, g) = \beta [\phi(1) V_{t+1}(r, g) + (1 - \phi(1))(1 - \delta_t(g)) V_{t+1}(s, g)] \quad (7)$$

The value function above consists of two scenarios: the first term corresponds to the patient recovering from his symptoms and the second term represents the case in which he continues life in the hospital. With the remaining probability, he dies and his utility is normalized to zero.

Finally, an agent who has already recovered and is resistant to the virus enjoys

utility:

$$V_t(r, g) = \max_{c, x, n, \ell, h} u(c, a(x, \ell), d; r, g, p_t) + \beta V_{t+1}(r, g) \quad (8)$$

subject to (2) and (3).

It is important to keep track of the number of agents who find themselves in each of the situations described above. Denote the measure of agents of each type j of group g in period t by $M_t(j, g)$. Let \mathcal{M}_t be the set of these for all js and gs . Moreover, let $n_t(j, g)$ and $\ell_t(j, g)$ denote the policy function for hours worked and outside leisure, respectively, for each agent. Let the equilibrium time allocations in period t across all j and g be summarized in \mathcal{N}_t . The law of motion from one period to the next is represented by the mapping T :

$$\mathcal{M}_{t+1} = T(\mathcal{M}_t, \mathcal{N}_t, \Pi_t(o), \Pi_t(f)). \quad (9)$$

The law of motion for healthy people of a group g reads:

$$M_{t+1}(h, g) = M_t(h, g) [1 - \pi(n_t(h, g) + \ell_t(h, g), \Pi_t(g))]. \quad (10)$$

That is, the measure of healthy people next period consists of those who are healthy today and did not catch the virus. The right-hand-side of (10) thus describes the mapping T_h for healthy individuals. The corresponding equations for the other groups are provided in Appendix C. The aggregate mapping in (9) is given by the collection of all T_j .

Aggregate output in this economy is given by all the work supplied by agents of the different groups and infection statuses multiplied by their wages:

$$Q_t = \sum_{j, g} w(g) n_t(j, g) M_t(j, g). \quad (11)$$

Turn now to the calculation of the probability of getting infected per unit of time spent outside. First, let Π_0 represent an exogenous transmission rate from in-

ected to susceptible. Now, assume that, when outside their homes, both groups (those who live or not in *favelas*) spend a fraction $1 - \zeta$ of their time in a common space shared by everyone. The remaining ζ fraction of their time is spent only among members of the same group (*f* or *o*). These group-specific activities are undertaken within separate areas for each group. Denote by ξ_g the fraction of the space that is assigned to group g . This is supposed to represent the fact that slums have a much higher density than the rest of a city. Slum dwellers thus have to interact in much more confined spaces and this contributes to a faster spread of the virus. We then have:

$$\begin{aligned} \hat{\Pi}_t(g) = & (1 - \zeta)\Pi_0 \sum_{\tilde{g}, j \in \{i, s\}} (n_t(j, \tilde{g}) + \ell_t(j, \tilde{g})) M_t(j, \tilde{g}) \\ & + \zeta\Pi_0 \sum_{j \in \{i, s\}} \frac{1}{\xi_g} (n_t(j, g) + \ell_t(j, g)) M_t(j, g). \end{aligned} \quad (12)$$

Note that, when $\zeta = 0$, the expression above reduces to a pure random-mixing situation.

The parameter Π_0 is usually calibrated to match a basic reproduction number (R_0) at the outbreak of the epidemic. This number can be high enough such that it drives equation (12) above 1. This is due to the fact that we do not control for the possibility of multiple infections in a given period. In order to avoid this, we take a continuous-time approximation that yields:

$$\Pi_t(g) = 1 - e^{-\hat{\Pi}_t(g)}. \quad (13)$$

If $\hat{\Pi}_t(g)$ is small, then $\Pi_t(g) \approx \hat{\Pi}_t(g)$.

We will now define the probability that an agent with serious symptoms ($j = s$) dies, $\delta_t(g)$. This is time-varying as it depends on the supply of scarce hospital resources (e.g. ICU beds) and the demand by sick patients. Suppose there are two networks of medical services: a public one to which everyone has access to and a private one. Only individuals with health insurance can access the private network. Let Z_{pub} and Z_{priv} be the number of beds in the public and private hospitals, respectively. Assume also that no slum dweller (*f*) has access to

health insurance and therefore to private hospitals. For the others (o), a fraction ψ has health insurance.

Let U_{pub} and U_{priv} be the number of users in the public and private networks, respectively. These are given by:

$$\begin{aligned} U_{pub} &= M_t(s, f) + (1 - \psi)M_t(s, o), \\ U_{priv} &= \psi M_t(s, o), \end{aligned} \tag{14}$$

where $M_t(s, g)$ is the number of type- g agents who have serious symptoms.

Assume that an individual with serious symptoms who has access to a hospital bed dies with probability $\tilde{\delta}_1$. Those without access to a hospital bed dies with probability $\tilde{\delta}_2$. The death probability for individuals living in slums or not are given by the following two equations:

$$\begin{aligned} \delta(f) &= \tilde{\delta}_1 \min \left\{ \frac{Z_{pub}}{U_{pub}}, 1 \right\} + \tilde{\delta}_2 \max \left\{ \frac{U_{pub} - Z_{pub}}{U_{pub}}, 0 \right\}, \\ \delta(o) &= \psi \left[\tilde{\delta}_1 \min \left\{ \frac{Z_{priv}}{U_{priv}}, 1 \right\} + \tilde{\delta}_2 \max \left\{ \frac{U_{priv} - Z_{priv}}{U_{priv}}, 0 \right\} \right] + (1 - \psi)\delta(f). \end{aligned} \tag{15}$$

The first line spells out the probability of death for a slum dweller with serious symptoms. This only depends on the excess demand of hospital beds in the public network. The second line is the same for other agents. Now, with probability ψ , they have access to the private network through their health insurance. With complementary probability, they face the same likelihood of death as slum dwellers as both use the public hospital network.

A *rational-expectations equilibrium* in this economy with initial number of agents $M_0(j, g)$ consists of a sequence of infection and death rates $\{\Pi_t(g), \delta_t(g)\}_{t=0}^{\infty}$ and equilibrium time allocations $\{n_t(j, g), \ell_t(j, g)\}_{t=0}^{\infty}$ such that these time allocations are part of the solutions to the individual optimization problems (5) to (8), and the resulting law of motion (9) and their aggregation in (13) and (15) indeed give rise to the sequence $\{\Pi_t(g), \delta_t(g)\}_{t=0}^{\infty}$.

4 Fitting the Model to the Data

In order to analyze the role of slums in the Covid-19 pandemic, we must assign values to the model parameters. There are 21 parameters to be set. Some (15 parameters) are externally calibrated and others (6 parameters) are chosen such that certain model moments match their empirical counterparts. We focus our analysis on the city of Rio de Janeiro. Given that this a framework to understand the social behavior during a pandemic, we set the model period to one week.

City parameters: According to the 2010 Brazilian census, 22% of Rio de Janeiro’s population lived in slums (or *favelas*). We normalize the area of the model city to one. Then, given the share of the population living in slums (22%) and the population density in areas with slums relative to those without slums (4.05), we have that the fraction of space assigned to slums is $\xi_f = 0.065$.¹³

The proportion of time individuals spend with members of their same group is given by ζ . We set $\zeta = 0.334$. This corresponds to the fraction of time spent outside that is not work related. The implicit assumption is that work-related activities take place across all groups whereas leisure outside is separate.

We normalize the wage rate of individuals who do not live in slums to one, i.e., $w(o) = 1$. We then set the wage rate of agents who live in slums to $w(f) = 0.277$. Therefore, the relative hourly wage per capita of individuals who live in slums to those who do not is 27.7%, which is the number observed in the 2010 Census data for Rio de Janeiro.

Panel A of Table 1 reports the values of the parameters related to Rio de Janeiro. The third column (“Interpretation”) contains a comment on how each parameter was set.

Disease transmission and development: We now turn to parameters that control the transmission and disease development of Covid-19. In order to discipline how infectious the disease is, we target the basic reproduction number,

¹³The population density in areas with and without slums in the city of Rio de Janeiro are from the 2010 Census data. Population density in Rio de Janeiro’s slums is about 25,701.18 individuals per square kilometer and in areas without slums it is 6,344.46. A factor of 4 difference.

Table 1: Calibration and estimation of model parameters: City of Rio de Janeiro

Parameter	Value	Interpretation
Panel A: City parameters (6 parameters)		
$\sum_j M_0(j, f)$	0.222	Fraction of people living in slums (calibrated)
$w(o)$	1	Wage rate of non-slum agents (calibrated)
$w(f)$	0.277	Wage rate of slum agents (calibrated)
ξ_f	0.065	Frac. of space assigned to slums (calibrated)
ξ_o	0.934	Frac. of space assigned to areas wo slums (calibrated)
ζ	0.334	Prop. of time spent within group (calibrated)
Panel B: Disease parameters (8 parameters)		
Π_0	11.43	Infectiousness of Covid-19 (internatly estimated)
α	1	Prob(serious symptoms no recovery from mild) (calibrated)
$\phi(0)$	0.963	Prob. of recovery from mild Covid-19 (calibrated)
$\phi(1)$	0.284	Prob. of recovery from serious Covid-19 (calibrated)
$\bar{\ell}$	0.158	Infections through the health care system (calibrated)
$\bar{\delta}_1$	0.1	Wkly death rate; critically ill with ICU (calibrated)
$\bar{\delta}_2$	1.0	Wkly death rate; critically ill wo ICU (calibrated)
ψ	0.152	Prop. non-slum agents with priv. insurance (calibrated)
Z_{pub}	8.12e-5	Measure of beds in public system (calibrated)
Z_{priv}	4.9e-4	Measure of beds in private system (calibrated)
Panel C: Preference parameters (7 parameters)		
ρ	-1.72	Elast. of subst. bw leisure time and goods (calibrated)
θ	0.108	Production of leisure goods (internally estimated)
γ	1.089	Rel. utility weight - leisure goods (internally estimated)
λ_d	2.453	Rel. utility weight - leisure at home (internally estimated)
λ_a	1.995	Rel. utility weight - leisure at home; infected (calibrated)
β	0.96 ^{1/52}	Discount factor (calibrated)
b	7.85	Value of being alive (internally estimated)

R_0 . Appendix D.1 describes how we can compute this statistic in the model. The parameter Π_0 determines the per-period transmission rate in the model and is intimately related to R_0 . We thus pick Π_0 to target a value of 2.5 for the basic reproduction number. This lies within the range used by Atkeson (2020). Ferguson et al. (2020) uses $R_0 = 2.4$ while Zhang et al. (2020) estimates it to be 2.28. Remuzzi and Remuzzi (2020) reports values between 2.76 and 3.25. This yields $\Pi_0 = 11.43$.

We set $\alpha = 1$. This implies that an individual who is infected with Covid-19 either spends one week with mild symptoms and then either recovers or be-

comes critically ill. In order to determine the probabilities of recovery, we turn to medical data. CDC (2020) reports age-specific transition rates between infection and ICU care, and from ICU to death. We aggregate these using the Brazilian population pyramid available from the country's statistical office (*Instituto Brasileiro de Geografia e Estatística*, IBGE). This yields a 3.6% chance that someone who is infected ends up with serious symptoms. Moreover, the probability of death conditional on being critically ill is 20.2%. We turn these probabilities into weekly rates to conform with our chosen model period.¹⁴ Moreover, Verity et al. (2020) report that a critically-ill patient is discharged from the ICU after around 24.7 days, or 3.52 weeks. This yields a weekly probability of recovery from mild symptoms of $\phi(0) = 0.964$, a weekly probability of recovering from the ICU of $\phi(1) = 0.284$ and a weekly death probability conditional of being in the ICU of $\tilde{\delta}_1 = 0.1$. We assume the death probability of a patient with serious symptoms that does not have access to an ICU bed to be $\tilde{\delta}_2 = 1$.

Note that we assumed that a patient that is being treated in the ICU does not work or enjoy leisure but still interacts with others and may infect them. The amount of time in the model during which this interaction takes place is given by $\bar{\ell}$. Butler et al. (2018) estimate ICU patients interact with doctors, nurses and other people around 7.6 hours a day. Since this is a controlled environment, we use half this number to determine infections. This yields $\bar{\ell} = 0.158$.

Panel B of Table 1 summarizes the calibrated values of the parameters related to the Covid-19 pandemic.

Preference parameters: We assume that the composite leisure good a is produced according to the following function: $a = [\theta x^\rho + (1 - \theta)\ell^\rho]^{1/\rho}$. Following Kopecky (2011), we set $\rho = -1.72$. This yields an elasticity of substitution between leisure and goods of 0.368, which means they are complements.

We set the preference parameters θ , γ and λ_d to target three data moments related to time use and expenditures in Brazil. First, we target the fraction of income spent on goods consumed outside the home.¹⁵ According to the Brazil-

¹⁴See Appendix D.2.

¹⁵As Brotherhood et al. (2020), we classify the following items of the consumption basket as

ian expenditure survey (POF), individuals in Rio de Janeiro spent on average 27.82% of their income in goods outside the home.¹⁶ Second, we target the average weekly hours at work. According to the 2019 national household survey (PNAD-C), Rio de Janeiro residents spend 34.2 hours per week at work.¹⁷ Assuming an endowment of 112 non-sleeping weekly hours, this yields a fraction 0.306 of their time is spent at work. Third, we target the leisure time outside. In Brazil, the average person spends around 17.2 hours a week outside, which corresponds to a fraction 0.154 of their endowment of non-sleeping hours.¹⁸

The parameter λ_a denotes the increase in the marginal utility of staying at home for agents that are infected with Covid. This parameter is related to the extra amount of time an individual spends at home *without any influence from the government*. In order to identify this parameter, we turn to how agents behave when they contract influenza. Akazawa, Sindelar, and Paltiel (2003) report that the average American worker takes 1.3 days of sick leave when infected with influenza. Given a 40-hour work week, this implies an average of 10.4 hours. We assume that the same would happen with Covid. As the disease lasts an average of one week (absent development of serious symptoms), this implies a decline in 26% of work time. We assume the same number for Brazilian workers. Suppose that leisure outside declines by the same amount. We then choose λ_a to match an increase in time spent at home by 26% compared to a world without Covid-19.

For the preference discount factor, we assume that agents discount the future at roughly 4% per year and set $\beta = 0.96^{1/52}$. The average real interest rate in Brazil is approximately 4.9% from 2005.1 to 2020.5 and 3.5% from 2009.1 to 2020.5.¹⁹

goods consumed outside: food away from home, public transportation, medical services and entertainment.

¹⁶The expenditure survey POF is the *Pesquisa de Orçamento Familiar* for 2008-09.

¹⁷The national household survey PNAD-C is the *Pesquisa Nacional por Amostra de Domicílios Contínua*. We get the average hours worked per week and multiply by the share of people who have a job or are self-employed.

¹⁸The total hours of leisure outside are computed adding time spent commuting (Pereira and Schwanen 2013) and activities related to socializing, cultural and sport activities. This data comes from the 2009 PNAD-C and the test pilot time use survey.

¹⁹This is the monthly Over/Selic interest rate (Brazilian Central Bank rate) minus the inflation rate measured by the IGP-DI (General price index from Vargas Foundation). We annualized the

Table 2: Moments – Model vs. Data

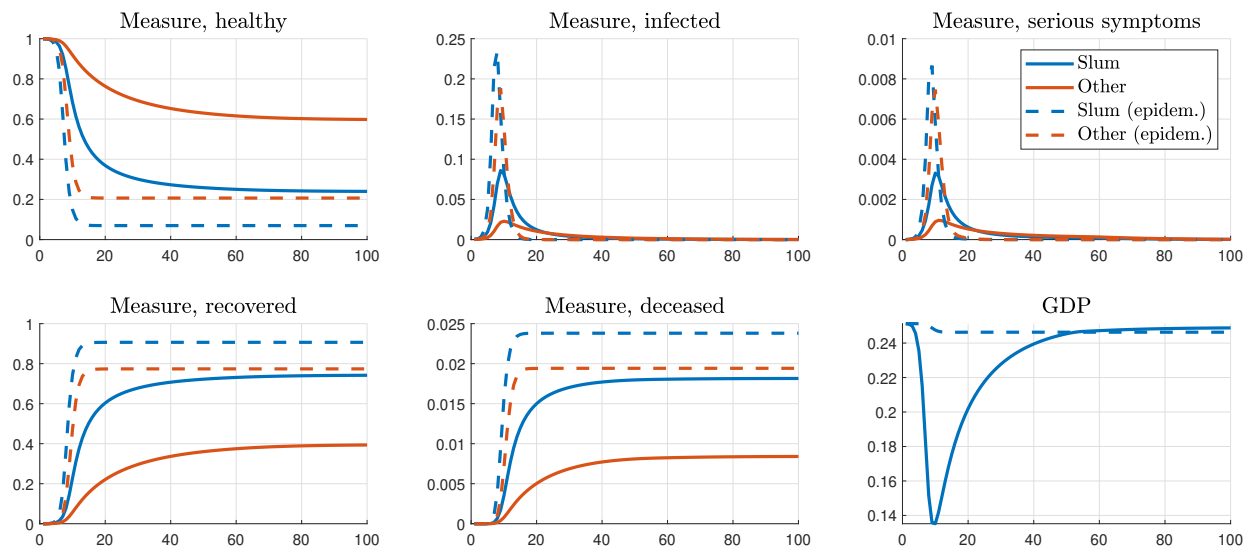
Moment	Model	Data (ranges)
Share of individuals living in slums	22%	22%
Pop. density in slums/Pop. density in non-slum areas	4.5	4.5
Relative hourly labor income of individuals in slums	27.7%	27.7%
R_0 , Covid-19	2.5	1.6-4
% of infected in critical care	3.6	3.6
Weeks in critical care	3.5	3-6
% in critical care who die	20.24	10.6-31.8
Hours/day interacting while in ICU	3.8	7.6 (controlled)
Hours of work per week	34.2	34.2
Hours of outside activities per week	17.2	17.2
% of income on goods outside	27.28	27.28
% ↑ in time @ home - mild symptoms	26	26 (Influenza)
% ↑ in time @ home - outset of Covid-19	15.7	15.7
% of non-slum agents with priv. insurance	15.21	15.21

Finally, we must set a value for b , the per-period value of being alive. Note that a higher value for this parameter implies that an individual will engage in more cautious behavior to avoid death. We thus pick b to generate an increase in time at home as the one observed at the outbreak of the Covid-19 pandemic. The issue is that most countries adopted lockdowns at the same time. We thus look at Sweden, a country that did not implement severe restrictions. Brotherhood et al. (2020) report an increase of 15.7% in time at home in Sweden in week 8 of the epidemic. As slums are not an important factor in Sweden, we use this 15.7% hike as the target of a version of our model without slums. This yields a value of $b = 7.85$.

Panel C of Table 1 contains the calibrated preference parameters. Table 2 summarizes some targeted moments of the model and their data counterpart. The model matches the moments of Rio de Janeiro quite well.

monthly average real interest rate and inflation. These two variables can be downloaded from <http://www.ipeadata.gov.br>.

Figure 4: Aggregate variables, Baseline



5 Baseline Results

This section presents our baseline results. Our main focus is to understand the role of slums in the pandemic. We first describe the path of our baseline economy when there is an outbreak of Covid-19 and there is no policy intervention. Different policies are investigated in the next section.

Figure 4 shows the masses of individuals in different health states: healthy, infected, with serious symptoms, recovered and deceased. The blue lines describe the dynamics of individuals who live in slums while the orange lines represent those who are not slum dwellers.²⁰ The solid lines display our economic model with equilibrium social distancing, and the dashed lines show, for comparison, the counterfactual epidemiological model, in which behavior is unchanged relative to a world without the pandemic. The last graph in this figure displays aggregate output. Along with this figure, Table 3 summarizes key moments of the pandemic in our baseline model (first column) and in a typical epidemiological model (second column), where behavior is kept constant by assumption.

²⁰In our calibration 22% of individuals live in slums. So any change in the figure is relative to this initial mass. Non-slum dwellers thus correspond to 78% of all individuals.

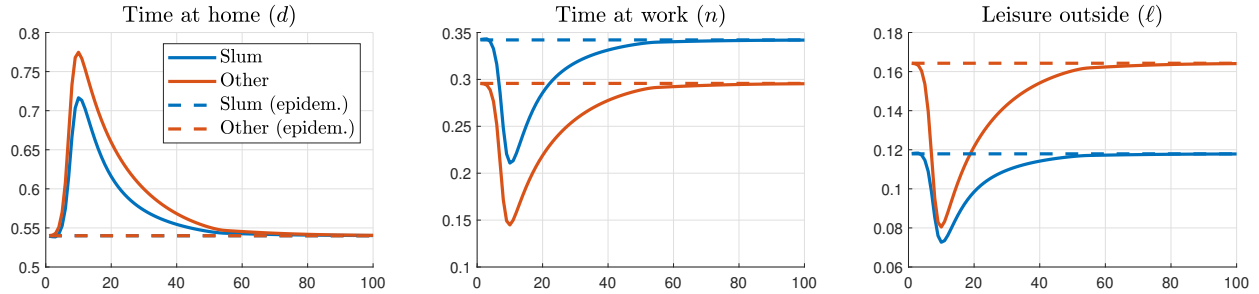
Table 3: Baseline results

	Benchmark	Epidem.	No slum	Homog. densities	Homog. wage rates
Wks to peak srsly ill (slum)	10.00	9.00	–	15.00	10.00
Wks to peak srsly ill (other)	11.00	10.00	14.00	14.00	11.00
Srsly ill p/ 1,000 @ peak (slum)	3.31	8.66	–	1.14	1.60
Srsly ill p/ 1,000 @ peak (other)	0.96	7.46	0.81	0.84	0.89
Dead p/ 1,000 1year (slum)	17.99	23.80	–	11.47	14.78
Dead p/ 1,000 1year (other)	8.14	19.42	8.83	8.87	8.88
Dead p/ 1,000 1year (all)	10.32	20.39	8.83	9.45	10.19
Dead p/ 1,000 LR (slum)	18.16	23.80	–	11.97	15.60
Dead p/ 1,000 LR (other)	8.42	19.42	9.64	9.47	9.53
Dead p/ 1,000 LR (all)	10.57	20.39	9.64	10.02	10.87
Immune in LR (slum), %	74.28	90.66	–	51.99	68.03
Immune in LR (other), %	39.51	77.38	46.19	44.77	44.71
Immune in LR (all), %	47.21	80.32	46.19	46.37	49.87
GDP at peak - rel to BM	1.00	1.84	1.49	1.24	1.33
GDP 1year - rel to BM	1.00	1.14	1.17	1.00	1.15
Hrs @ home (slum) - peak	80.25	60.48	–	68.75	88.22
Hrs @ home (other) - peak	86.77	60.48	78.05	80.21	80.75
Hrs @ home (slum) - 6m	65.52	60.48	–	65.10	78.24
Hrs @ home (other) - 6m	69.31	60.48	72.48	72.93	71.03
Value - healthy (slum)	1045.20	1040.20	–	1053.00	3365.70
Value - healthy (other)	3393.20	3359.80	3390.50	3390.60	3390.40
Value - healthy (all)	2873.10	2846.00	3390.50	2872.80	3384.90

The total duration of the unchecked epidemic is about a year (when herd immunity becomes strong enough to essentially prevent further contagion) and the peak in terms of seriously ill individuals is reached in about 11 weeks. As the virus spreads, social distancing endogenously rises as evidenced by the hike in hours at home by both groups. The number of infected people is thus reduced relative to the typical epidemiological model. This also translates in a lower death toll in the benchmark. Notice that GDP at the peak is substantially higher in the epidemiological model relative to the baseline. With the rising risk of getting infected and possibly dying, agents cut time spent outside their home and hours worked are sharply reduced.

Turn now to the role of slums in shaping health and economic dynamics. Table 3 shows that the benchmark economy features a much higher death toll in slums relative to other areas. The total death rate is approximately 11 per 1,000

Figure 5: Choices of healthy agents



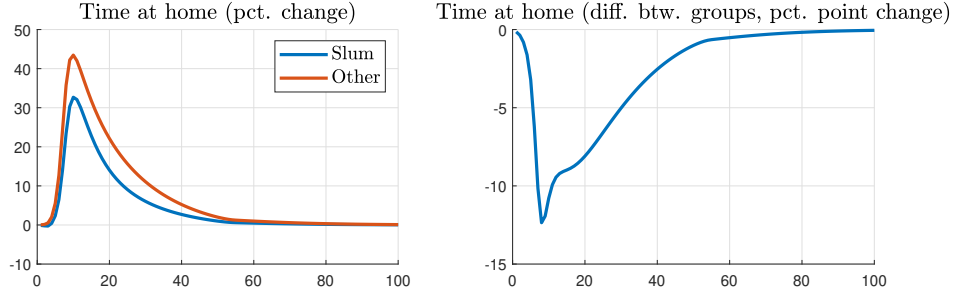
individuals, but in slums it is roughly 18 per 1,000 residents. This can be explained by the higher density in slums and therefore more contagion, as well as more congestion of intensive care units—more on these issues below—but also by differences in the individual choices of slum and non-slum residents.

Figure 5 displays the time spent at home, at work and with leisure outside. Social distancing (the increase in time at home relative to an epidemiological model with no behavioral change) is lower for slum dwellers than for other individuals. Since they are poorer, slum residents decrease the number of hours worked by less than non-slum individuals despite the fact they have a higher chance of catching the virus. Figure 6 shows the difference in social distancing between the two groups at the outbreak of the pandemic. At the peak of the disease, social distancing is about 12 percentage points lower for slum residents compared to others. This is qualitatively consistent with our event-study analysis using mobile phones in Rio de Janeiro, displayed in Figure 2. Quantitatively, the unchecked epidemic generates a larger effect on the difference in social distancing between slum and non-slum individuals.²¹ Recall that in our model this is an unchecked epidemic, while in the data there are NPIs. We will discuss the effects of NPIs in our model in the next section.

In order to further assess the role of slums in the pandemic we run a counter-

²¹We should interpret the comparison of our theoretical social distancing measure with the empirical index based on mobile phones with caution. The theoretical measure is an intensive margin proxy for social distancing while the index constructed by Inloco is an extensive margin measure. If we interpret in the model the home time as the fraction of households who stay at home, then the model and the empirical counterpart would be equivalent.

Figure 6: Difference in protection behavior between slum and non-slum agents



factual in which we set the measure of slum individuals to zero and keep all other parameters at their baseline values. See the third column of Table 3. The total death rate is only 9% below its baseline counterpart. For the non-slum residents (the only ones in this hypothetical world), however, it is now *higher* than the baseline: 9.64 per 1,000 in the counterfactual versus 8.42 in the benchmark. There are two reasons for this. First, in the baseline, close to 75% of slum residents are immune in the long run. That is, they contribute a lot to reach herd immunity. In the benchmark, only 39% of non-slum individuals are infected throughout the pandemic. Without slums, this number rises to 46%. The second reason is that, with a safer environment in the non-slum world, other individuals are less cautious. For instance, at the peak, they spend about nine fewer hours at home. In the end, residents from other areas end up with a lower welfare in this scenario without slums.

In our model environment, slum dwellers are different in three important characteristics: they live in denser areas, their wage rate is lower and it is harder for them to be admitted to an ICU. We now investigate the role of the first two factors in shaping the dynamics of the pandemic. Easier access to ICU beds will be assessed in our policy section.

The fourth column of Table 3 contains statistics for a counterfactual in which $\xi_f = 0.22$, which implies that the population density in slums is the same as what is observed in other areas. All other parameters are kept at their baseline values. The pandemic lasts longer now since the spread of the virus is reduced and it takes more time to reach herd immunity. Relative to the base-

line, the death rate of slum dwellers is reduced from 18.16 to 11.97 per 1,000 individuals—a 34% reduction. The death rate of other individuals rise from 8.42 to 9.47—a rise of about 12%. That is, the health outcomes of the two different groups become much more similar. With less contagion due to a lower population density in slums, individuals expose themselves more by spending less time at home, offsetting in part the direct effect of a lower population density in slums.

In the last column of Table 3, we increase the wage of slum dwellers and equate it to the wage of other agents; i.e. $w_f = 1$. All other parameters remain at their baseline values. Relative to the benchmark, since they are now richer, individuals who live in slums spend more time at home. As these agents are now more cautious, their death rate is reduced from 18.16 to 15.60, a reduction of 14%. Given that a lower number of slum dwellers are infected now, the economy can only reach herd immunity with a higher fraction of non-slum residents being infected. This also translates into a higher death toll among the latter group; an increase from 8.42 to 9.53 per 1,000.

In sum, in our unchecked pandemic calibrated to Rio de Janeiro, slums have a non-trivial role in shaping the effects of Covid-19. First of all, the death rate in slums is higher than in other areas. Slum dwellers' share in total deaths is much higher than their fraction in the overall population of the city. In addition, the very high population density in slums compared to other parts of the city seems to be a key feature in explaining the high death rate observed in slums. Interestingly, the presence of slums decreases significantly the time to reach herd immunity and protects individuals who live in other neighborhoods, generating important distributional effects. Policies that aim to curb the Covid-19 pandemic in societies with a high fraction of their population living in slums must then take this fact into account. The next section explores the effects of a variety of such policies.

6 Policy Experiments

In this section we assess the impact of NPIs to control the health and economic impact of the pandemic in our model economy. We evaluate three different policies: the government requisition of private hospital intensive care units to increase capacity in order to meet the demand for Covid-19 related treatment; lockdown interventions to increase social distancing (shelter-at-home orders); and financial aid policies to help people to stay at home.

6.1 Public Hospital Beds

In Rio de Janeiro approximately 15% of the individuals have private health insurance and therefore access to private hospital beds. There are 510 and 3,079 beds in intensive care units in public and private hospitals, respectively (in a city of about 6.3 million people).

In our calibration we assume that slum dwellers have no health insurance and approximately 19% of the individuals who do not live in slums have private insurance. We should expect that congestion of health services is therefore greater in slum areas. In this policy intervention, we investigate the impact of a counterfactual experiment in which the ICUs in private hospitals could be used to treat all individuals in the need for critical care.²²

Table 4 shows that the total death rate is reduced by approximately 23 percent with this policy. Although slum dwellers are the ones who benefit the most from this policy, individuals who live in non-slum areas are also positively affected since only a small fraction of them have private health insurance. Observe that most of the agents decrease social distancing with this intervention as time at home decreases. But the difference is not quantitatively so different from the unchecked epidemic. The decrease in the death rate is mainly explained by the direct effect of reducing congestion in access to public hospital care units rather than by indirect effects of changing behavior. In the long run,

²²We abstract from any financial and political economy barrier to implement such a policy.

Table 4: All hospital beds used by the public system

	Benchmark	All beds public
Wks to peak srsly ill (slum)	10.00	10.00
Wks to peak srsly ill (other)	11.00	11.00
Srsly ill p/ 1,000 @ peak (slum)	3.31	4.35
Srsly ill p/ 1,000 @ peak (other)	0.96	1.16
Dead p/ 1,000 1year (slum)	17.99	13.98
Dead p/ 1,000 1year (other)	8.14	6.46
Dead p/ 1,000 1year (all)	10.32	8.12
Dead p/ 1,000 LR (slum)	18.16	14.02
Dead p/ 1,000 LR (other)	8.42	6.53
Dead p/ 1,000 LR (all)	10.57	8.19
Immune in LR (slum), %	74.28	76.77
Immune in LR (other), %	39.51	43.02
Immune in LR (all), %	47.21	50.50
GDP at peak - rel to BM	1.00	1.01
GDP 1year - rel to BM	1.00	1.03
Hrs @ home (slum) - peak	80.25	79.59
Hrs @ home (other) - peak	86.77	85.92
Hrs @ home (slum) - 6m	65.52	63.10
Hrs @ home (other) - 6m	69.31	65.61
Value - healthy (slum)	1045.20	1049.70
Value - healthy (other)	3393.20	3400.30
Value - healthy (all)	2873.10	2879.60

more individuals of both groups survive and become immune to the disease. Note also that this policy increases the welfare for both groups.

6.2 Shelter-at-home Policies

We now investigate stay-at-home orders that can be implemented with the closing of non-essential businesses and schools, among other interventions. Results for different lockdown restrictions are displayed in Table 5.

The first column in Table 5 reports moments related to the baseline unchecked pandemic for comparison. The second column shows the same statistics for a scenario in which there is a shelter-at-home policy that covers 26 weeks from the start of the health crisis. During the duration of this policy, individuals

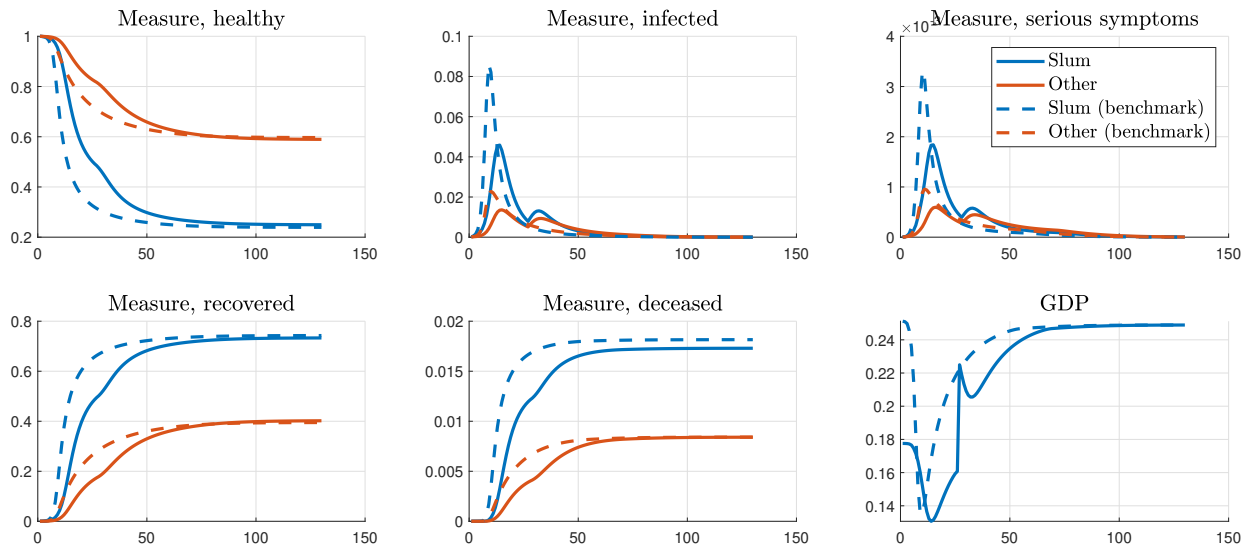
Table 5: Shelter-at-home policies

	Benchmark	Immediate lockdown				6-week late lockdown
		25%, all 26 weeks	25%, slums 26 weeks	25%, non-slum 26 weeks	75%, all 35 weeks	25%, all 26 weeks
Wks to peak srsly ill (slum)	10.00	15.00	13.00	11.00	66.00	11.00
Wks to peak srsly ill (other)	11.00	16.00	14.00	12.00	67.00	12.00
Srsly ill p/ 1,000 @ peak (slum)	3.31	1.84	1.94	3.27	3.32	1.91
Srsly ill p/ 1,000 @ peak (other)	0.96	0.60	0.88	0.71	0.96	0.60
Dead p/ 1,000 1year (slum)	17.99	16.65	16.43	17.99	0.00	15.75
Dead p/ 1,000 1year (other)	8.14	7.55	8.90	6.80	0.00	6.80
Dead p/ 1,000 1year (all)	10.32	9.57	10.57	9.28	0.00	8.78
Dead p/ 1,000 LR (slum)	18.16	17.30	16.81	18.44	18.14	17.03
Dead p/ 1,000 LR (other)	8.42	8.41	9.29	7.68	8.41	8.28
Dead p/ 1,000 LR (all)	10.57	10.38	10.95	10.06	10.57	10.22
Immune in LR (slum), %	74.28	73.34	70.71	76.50	74.31	73.03
Immune in LR (other), %	39.51	40.24	42.75	38.18	39.48	40.50
Immune in LR (all), %	47.21	47.58	48.94	46.67	47.20	47.70
GDP at peak - rel to BM	1.00	0.97	1.12	0.86	0.99	0.96
GDP 1year - rel to BM	1.00	0.87	0.98	0.89	0.47	0.87
Hrs @ home (slum) - peak	80.25	82.78	83.88	78.99	79.62	83.30
Hrs @ home (other) - peak	86.77	86.18	82.21	89.91	86.57	86.51
Hrs @ home (slum) - 6m	65.52	78.15	78.94	63.46	105.84	77.17
Hrs @ home (other) - 6m	69.31	79.80	70.80	78.29	105.84	78.39
Value - healthy (slum)	1045.20	1041.20	1041.20	1045.10	940.27	1041.10
Value - healthy (other)	3393.20	3388.30	3390.90	3390.20	3288.80	3388.50
Value - healthy (all)	2873.10	2868.40	2870.40	2870.80	2768.60	2868.60

are required to increase their time at home by 25% relative to an environment without the pandemic.²³ As we can also see in Figure 7, the lockdown (solid lines) flattens out the infected and critically-ill curves relative to the unchecked pandemic (dashed lines). The total death rate decreases, mainly among slum dwellers. There is less congestion of public beds with the lockdown, which is a more binding issue for individuals living in slums. The total death rate among slum dwellers decreases by approximately 5% while the overall death rate is reduced by 2%. The long-run death rate of the agents who do not live in slums is almost unchanged.

²³We implement this by increasing $\lambda_p(j, g)$ to the necessary value to induce agents to follow the lockdown policy. Appendix D.3 reports the calibrated values for all counterfactuals in this section.

Figure 7: Aggregate variables (lockdown, 25% increase in time at home, all groups, 26 weeks)



Notice that GDP during the first year of the pandemic decreases by 13% relative to the no-policy baseline. The strong impact on the economy comes from a reduction in the time spent at work. Figure 8 reports the choice of the agents with a 26 weeks shelter-at-home policy (solid lines), as well as the benchmark (dashed lines). Individuals stay longer at home with this lockdown policy than in the baseline, reducing the peak of infection but delaying the duration of the health crisis.

Figure 8: Choices of healthy agents (lockdown, 25% increase in time at home, all groups, 26 weeks)

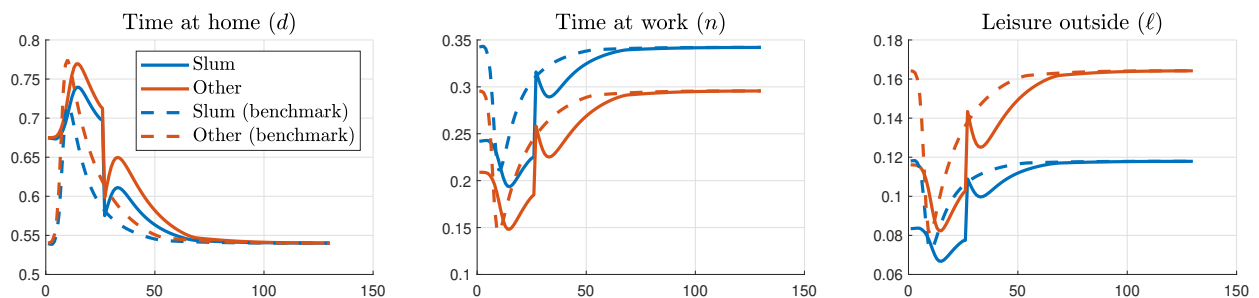
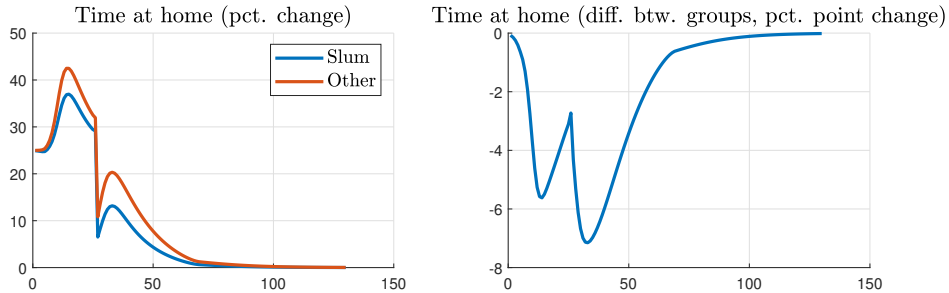


Figure 9: Difference in protection behavior between slum and non-slum agents (lockdown, 25% increase in time at home, all groups, 26 weeks)



Notice that the time spent at home increases by about 20 percentage points relative to the baseline before the outset of the disease (left panel of Figure 8). This is approximately the average percentage point change in the social distancing index observed in the city of Rio de Janeiro (recall Figure 1 in Section 2). In addition, the model implies a difference in social distancing between slum and non-slum dwellers of around five percentage points (Figure 9). This is similar to those reported in our event-study analysis in Figure 2 of Section 2.

In order to understand the role of slums in shaping the dynamics of the pandemic under a lockdown, we also investigate the effects of targeted shelter-at-home orders: a policy of increased social distancing applied only to individuals living in slums (third column of Table 5) and one applied only to those who live in other areas (fourth column of Table 5). Interestingly, the shelter-at-home policy in slums only increases the long-run death rate for non-slum individuals. This is due to the fact that the fraction of non-slum dwellers necessary to reach herd immunity would need to rise to compensate for the lower transmission in slums. As the non-slum group is larger, this translates into a higher overall death rate. This policy ends up lowering the welfare of both groups: slum residents are worse off because they are sheltered (even though deaths among this group decrease) and the others suffer a worse health shock.

We also implement a more extreme lockdown policy (fifth column of Table 5) in which we target a rise in 75% in the time spent at home relative to the baseline. This policy lasts for 35 weeks or approximately 8 months. There are al-

most no deaths in the first year of the pandemic, which now lasts much longer. Therefore, a stricter lockdown is an effective strategy to delay the peak and to control temporarily the number of infected individuals and deaths. This might be an important policy while waiting to build public infrastructure (e.g. hospital beds) and/or define a future plan of action to control the virus, including waiting for a possible treatment or vaccine. Without improvements in infrastructure, treatment or a vaccine, however, the total number of deaths with or without an extreme lockdown are roughly the same. The reason is that, when the extreme lockdown is relaxed, the numbers of infections and seriously ill patients rise sharply leading to similar deaths compared to the case without the policy. The extreme shelter-at-home policy clearly causes a deep economic downturn.

Our shelter-at-home policies so far were implemented in the beginning of the pandemic, when congestion of public goods is not necessarily binding. In the last column of Table 5 we implement a lockdown policy similar to the one in column two, but that is imposed in week 6 of the pandemic, instead of week 1. This later lockdown is more effective in saving lives. The total death rate is reduced by 3.5% instead of 2%, as in the lockdown that is implemented in week 1. The economic effects of both shelter-at-home policies are similar.

6.3 Financial Aid

We now turn to study the effects of an emergency measure designed to compensate individuals for income losses due to a rise in social distancing. Table 6 contains such counterfactual experiments. Again for comparison, the first column of this table contains the moments of the unchecked pandemic. The second column displays the same statistics for the case in which the government transfers 300 reais per month for all individuals in the first 26 weeks of the pandemic.²⁴ This corresponds to 44% and 12% of the monthly income of slum and non-slum dwellers, respectively.

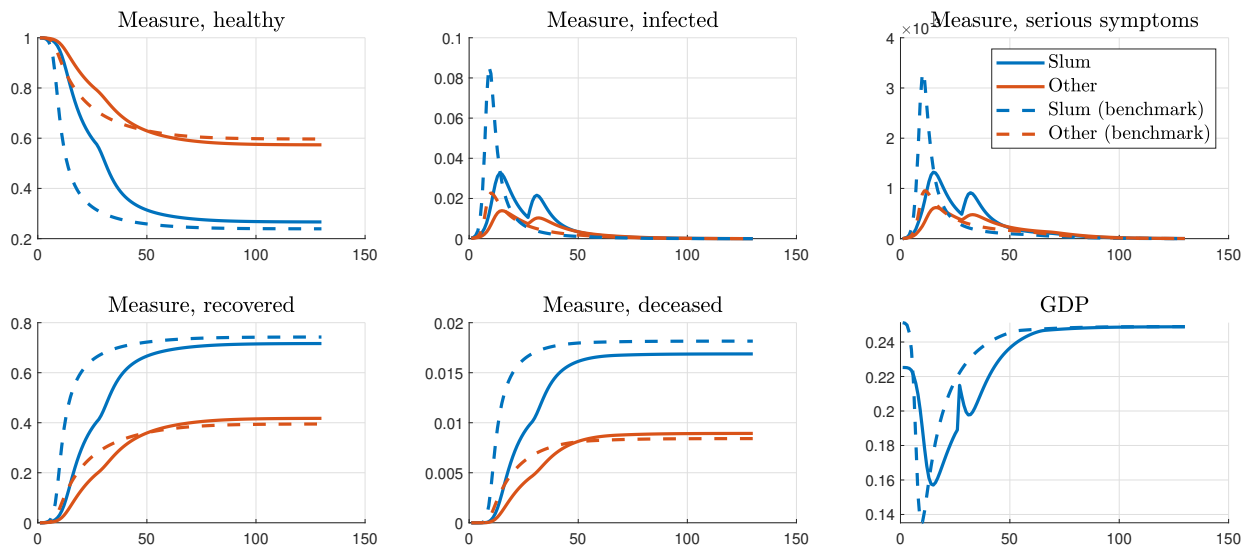
²⁴This amount is approximately 60 US dollars in July, 2020.

Table 6: Financial aid policies

	Benchmark	Only financial aid			Aid and 25% lockdown for all		
		300R\$, all 26 weeks	300R\$, slums 26 weeks	600R\$, slums 26 weeks	300R\$, all 26 weeks	300R\$, slums 26 weeks	600R\$, slums 26 weeks
Wks to peak srsly ill (slum)	10.00	15.00	14.00	32.00	32.00	32.00	32.00
Wks to peak srsly ill (other)	11.00	16.00	15.00	19.00	33.00	33.00	33.00
Srsly ill p/ 1,000 @ peak (slum)	3.31	1.32	1.40	1.98	2.61	2.10	2.81
Srsly ill p/ 1,000 @ peak (other)	0.96	0.62	0.78	0.64	0.83	0.70	0.78
Dead p/ 1,000 1year (slum)	17.99	16.27	16.14	15.94	16.35	16.25	16.36
Dead p/ 1,000 1year (other)	8.14	8.27	8.95	8.89	7.11	7.76	7.62
Dead p/ 1,000 1year (all)	10.32	10.04	10.54	10.45	9.16	9.64	9.56
Dead p/ 1,000 LR (slum)	18.16	16.88	16.63	16.62	17.35	17.08	17.31
Dead p/ 1,000 LR (other)	8.42	8.93	9.41	9.48	8.37	8.70	8.65
Dead p/ 1,000 LR (all)	10.57	10.69	11.01	11.06	10.36	10.56	10.57
Immune in LR (slum), %	74.28	71.68	70.43	70.11	73.45	72.28	72.14
Immune in LR (other), %	39.51	41.77	43.19	43.68	40.18	41.19	41.32
Immune in LR (all), %	47.21	48.39	49.22	49.54	47.55	48.08	48.14
GDP at peak - rel to BM	1.00	1.16	1.24	1.31	1.11	1.21	1.13
GDP 1year - rel to BM	1.00	0.94	0.98	0.98	0.84	0.89	0.91
Hrs @ home (slum) - peak	80.25	78.27	80.02	76.80	77.99	77.22	79.69
Hrs @ home (other) - peak	86.77	78.18	78.36	80.67	84.19	82.32	84.97
Hrs @ home (slum) - 6m	65.52	73.70	74.41	80.01	82.35	83.58	87.05
Hrs @ home (other) - 6m	69.31	72.04	70.92	70.22	77.83	77.68	73.03
Value - healthy (slum)	1045.20	1062.30	1062.40	1075.50	1059.10	1059.30	1073.60
Value - healthy (other)	3393.20	3397.60	3391.20	3391.10	3396.20	3390.50	3392.20
Value - healthy (all)	2873.10	2880.30	2875.40	2878.20	2878.50	2874.20	2878.60

Figure 10 shows that this policy flattens out the infection curves. This effect is more pronounced in slums. The income effect is stronger for slum dwellers than for those individuals who live in other areas (time at home at the peak is essentially the same across the two groups). This implies that individuals living in slums increase social distancing much more than in the benchmark. The total death rate among individuals living in slums is reduced by 7% relative to the baseline. Given that the threshold for herd immunity rises for non-slum dwellers, this ends up increasing their total death rate by 6% during the pandemic. The overall death rate rises since the measure of individuals not living in slums is large. Notice that this composition effect on death rates becomes more pronounced when only slum dwellers receive the financial aid—third column of Table 6—or when the financial aid is more generous (600 reais for 26 weeks instead of 300 reais)—fourth column of Table 6.

Figure 10: Aggregate variables (300R\$ financial aid for 26 weeks, all groups)



We now combine cash transfers lasting 26 weeks with stay-at-home orders that cover the same period (we target a rise in 25% in the time spent at home relative to the baseline by rising λ_p , see Appendix D.3). Such combination of policies was implemented in several countries including in Brazil.²⁵ Start with a transfer of 300 reais. The combined policy extends the duration of the pandemic; much longer than when each of the policies is implemented separately. When the policy is relaxed infections rise rapidly and the overall death rate is only 2% below the baseline. Notice, however, that the death rate among slum dwellers is higher than in the case of only cash transfers or only the lockdown. Welfare with transfers and lockdown is of course higher than in the case with only lockdown. Targeting the transfer to slum dwellers exacerbates the differences across groups, as it decreases infections and deaths in slums and increases these statistics in other areas.

²⁵Brazilian informal workers received 600 reais per month for three months during the pandemic as a compensation for their confinement. There were several issues related to the timing of the policy and to the bureaucracy to receive this cash transfer.

7 Conclusions

Over one billion people in the world live in slums. These are usually crowded neighborhoods where social distancing is hard to be followed. Infectious diseases can thus spread rapidly in such areas. This paper studies the role of slums in shaping the health and economic dynamics of pandemics. Using rich data gathered from millions of mobile phones in Brazil, we show that social distancing increased less in slums at the outset of the Covid-19 pandemic.

We build and calibrate a model where poor agents live in high-density slums and richer individuals live in other areas. The former have a harder time accessing health care due to capacity constraints in public hospitals. This all adds up to a disproportionately high number of deaths among slum residents. In a counterfactual scenario without slums, a higher fraction of residents from other areas catch the disease as the burden to achieve herd immunity falls only on this group, illustrating important distributional effects.

Using the model to explore a variety of policy experiments highlights the importance of taking this heterogeneity into account. Reallocating private ICUs into a single pool helps all groups, decreasing the death toll significantly. Very stringent shelter-at-home orders buy time but only delay deaths if no other policy is put in place. If lockdowns shelter a particular group, the other suffers worse health outcomes, and the welfare of both groups declines. Cash transfers have a disproportional impact on slum residents and, as they can now afford to cut their labor supply, infections fall more heavily on the other group. In sum, policies can have contrasting effects across different groups in society.

Though our framework has considerable heterogeneity that allows for an array of policy experiments, we have abstracted from potentially important margins. For instance, individuals in our model are assigned a place of residence and cannot move. Perhaps long-lasting pandemics may lead them to relocate and health considerations may then affect the very structure of the city. Additionally, temporary cuts in labor supply may have enduring effects on job prospects. Being more likely to have informal jobs, slum dwellers may suffer more from

such displacements. These and other issues are left for future research.

References

- Ahlfeldt, Gabriel M., Stephen J. Redding, Daniel M. Sturm, and Nikolaus Wolf. 2015. "The Economics of Density: Evidence From the Berlin Wall." *Econometrica* 83 (6): 2127–2189.
- Ajzenman, Nicolás, Tiago Cavalcanti, and Daniel Da Mata. 2020. "More than Words: Leaders' Speech and Risky Behavior During a Pandemic." Technical Report DP14707, CEPR.
- Akazawa, Manabu, Jody L. Sindelar, and A. David Paltiel. 2003. "Economic Costs of Influenza-Related Work Absenteeism." *Value in Health* 6 (2): 107–115.
- Alon, Titan, Minki Kim, David Lagakos, and Mitchell VanVuren. 2020. "Lockdown in Developing and Developed Countries." *Covid Economics* 22:1–46.
- Atkeson, Andrew. 2020, March. "What Will Be the Economic Impact of COVID-19 in the US? Rough Estimates of Disease Scenarios." Working paper 26867, National Bureau of Economic Research.
- Brotherhood, Luiz, Philipp Kircher, Cezar Santos, and Michèle Tertilt. 2020. "An economic model of the Covid-19 epidemic: The importance of testing and age-specific policies." Technical Report DP14695, CEPR.
- Brueckner, Jan K., and Harris Selod. 2009. "A Theory of Urban Squatting and Land-Tenure Formalization in Developing Countries." *American Economic Journal: Economic Policy* 1 (1): 28–51 (February).
- Butler, Rachel, Mauricio Monsalve, Geb W. Thomas, Ted Herman, Alberto M. Segre, Philip M. Polgreen, and Manish Suneja. 2018. "Estimating Time Physicians and Other Health Care Workers Spend with Patients in an Intensive Care Unit Using a Sensor Network." *The American Journal of Medicine* 131 (8): 972.e9–972.e15.

- Cavalcanti, Tiago, Daniel Da Mata, and Marcelo Santos. 2019. "On the Determinants of Slum Formation." *The Economic Journal* 129 (621): 1971–1991 (01).
- CDC. 2020. "Severe Outcomes Among Patients with Coronavirus Disease 2019 (COVID-19) — United States, February 12–March 16, 2020." *MMWR Morb Mortal Wkly Rep* 2020 69 (12): 343–346.
- Chan, Tat, Barton Hamilton, and Nicholas Papageorge. 2016. "Health, Risky Behavior and the Value of Medical Innovation for Infectious Disease." *Review of Economic Studies* 83 (3): 1737–1755.
- Combes, Pierre-Philippe, Gilles Duranton, and Laurent Gobillon. 2019. "The Costs of Agglomeration: House and Land Prices in French Cities." *The Review of Economic Studies* 86 (4): 1556–1589 (10).
- Duranton, Gilles, and Diego Puga. 2004. "Chapter 48 - Micro-Foundations of Urban Agglomeration Economies." In *Cities and Geography*, edited by J. Vernon Henderson and Jacques-François Thisse, Volume 4 of *Handbook of Regional and Urban Economics*, 2063 – 2117. Elsevier.
- Eichenbaum, Martin S, Sergio Rebelo, and Mathias Trabandt. 2020, March. "The Macroeconomics of Epidemics." Working paper 26882, National Bureau of Economic Research.
- Farboodi, Maryam, Gregor Jarosch, and Robert Shimer. 2020. "Internal and External Effects of Social Distancing in a Pandemic." Working paper.
- Favero, Carlo, Andrea Ichino, and Aldo Rustichini. 2020, April. "Restarting the economy while saving lives under Covid-19." Technical Report 3580606, SSRN.
- Ferguson, Neil M., Daniel Laydon, Gemma Nedjati-Gilani, Natsuko Imai, Kylie Ainslie, Marc Baguelin, Sangeeta Bhatia, Adhiratha Boonyasiri, Zulma Cucunubá, Gina Cuomo-Dannenburg, Amy Dighe, and Ila Dorigatti. 2020, March. "Restarting the economy while saving lives under Covid-19." Technical Report, Imperial College Covid-19 response team.
- Folha de São Paulo. 2020. "Diário da privação: Apesar do coronavírus,

quase tudo tá funcionando em Paraisópolis.” *Folha de São Paulo*. April 02, 2020. <https://www1.folha.uol.com.br/equilibrioesaude/2020/04/diario-da-privacao-apesar-do-coronavirus-quase-tudo-ta-funcionando-em-paraisopolis.shtml>.

Greenwood, Jeremy, Philipp Kircher, Cezar Santos, and Michèle Tertilt. 2017. “The Role of Marriage in Fighting HIV: A Quantitative Evaluation for Malawi.” *American Economic Review* 117 (5): 158–162 (May).

———. 2019. “An Equilibrium Model of the African HIV/AIDS Epidemic.” *Econometrica* 87 (4): 1081–1113 (July).

Henderson, J Vernon, Tanner Regan, , and Anthony J Venables. 2020. “Building the city: urban transition and institutional frictions.” *Review of Economic Studies*, forthcoming.

Kaplan, Greg, Benjamin Moll, and Gianluca Violante. 2020. “Pandemics According to HANK.” Working paper.

Kermack, W. O., and A. G. McKendrick. 1927. “A Contribution to the Mathematical Theory of Epidemics.” *Proceedings of the Royal Society A* 114 (772): 700–721.

Kopecky, Karen A. 2011. “The trend in retirement.” *International Economic Review* 52 (2): 287–316.

Kremer, Michael. 1996. “Integrating Behavioral Choice into Epidemiological Models of AIDS.” *The Quarterly Journal of Economics* 111 (2): 549–573 (05).

Monge-Naranjo, Alexander, Pedro Cavalcanti Ferreira, and Luciene Pereira. 2018. “Of Cities and Slums.” Working papers 2018-005, Human Capital and Economic Opportunity Working Group.

Peixoto, Pedro S, Diego Marcondes, Cláudia Peixoto, Lucas Queiroz, Rafael Gouveia, Afonso Delgado, and Sérgio M Oliva. 2020. “Potential Dissemination of Epidemics Based on Brazilian Mobile Geolocation Data. Part I: Population Dynamics and Future Spreading of Infection in the States of Sao Paulo and Rio de Janeiro During the Pandemic of COVID-19.” *medRxiv, the Preprint Server for Health Sciences*.

- Pereira, Rafael Henrique Moraes, and Tim Schwanen. 2013. "Tempo de Deslocamento Casa-Trabalho no Brasil (1992-2009): Diferenças entre Regiões Metropolitanas, Níveis de Renda e Sexo." *Texto para Discussão, IPEA, n. 1813*.
- Prefeitura Rio de Janeiro. 2020. "Prefeitura divulga resultado da primeira etapa de pesquisa sobre covid-19 em comunidades cariocas." June 22, 2020. <https://prefeitura.rio/saude/prefeitura-divulga-resultado-da-primeira-etapa-de-pesquisa-sobre-covid-19-em-comunidades-cariocas/>.
- Quercioli, Elena, and Lones Smith. 2006. "Contagious Matching Games." Unpublished Manuscript, University of Michigan.
- Remuzzi, Andrea, and Giuseppe Remuzzi. 2020. "COVID-19 and Italy: what next?" *The Lancet* 395 (10231): 1225–1228 (2020/04/21).
- United Nations. 2020. *UNDESA World Social Report 2020*. Edited by United Nations. United Nations publication.
- Verity, Robert, Lucy C Okell, Ilaria Dorigatti, Peter Winskill, Charles Whittaker, Natsuko Imai, Gina Cuomo-Dannenburg, Hayley Thompson, Patrick GT Walker, Han Fu, et al. 2020. "Estimates of the severity of coronavirus disease 2019: a model-based analysis." *The Lancet Infectious Diseases*.
- Zhang, Sheng, MengYuan Diao, Wenbo Yu, Lei Pei, Zhaofen Lin, and Dechang Chen. 2020. "Estimation of the reproductive number of novel coronavirus (COVID-19) and the probable outbreak size on the Diamond Princess cruise ship: A data-driven analysis." *International Journal of Infectious Diseases* 93:201 – 204.

Online Appendix

A Data Sources and Definitions

In this appendix, we detail the data used in the empirical motivation (Section 2) and in the model calibration (Section 4).

Population Census. We use data from the 2010 Brazilian Population Census carried out by IBGE (Brazilian Bureau of Statistics) to obtain information on households and people living inside and outside slums. In the paper, we define slums as housing units in “subnormal agglomeration”. According to the 2010 Population Census, a subnormal agglomeration satisfies three conditions: (i) it consists of a group of at least 50 housing units, (ii) where land is occupied illegally, and (iii) is urbanized in a disordered pattern and/or lacks basic public services such as sewage or electricity.

The 2010 Population Census interviews all households in the country (“universe questionnaire”) and also executes more detailed interviews on a 5% random sample of households (“sample questionnaire”). We use data from both the universe and sample questionnaires, as detailed below.

From the universe questionnaire, we obtained information on the characteristics of people and households at the census tract level (*Setor censitário*). Apart from obtaining information on the total number of people and households in each census sector, we are able to identify whether sectors are slums (“subnormal agglomeration”) or not. Using this information, we constructed the following variables for the cities of Rio de Janeiro and Sao Paulo:

- Total population
- Total number of households
- Number of people living in slum
- Number of households that are in slums

- Average population density of each census tract, where the density is number of inhabitants divided by the area of the tract in Km²
- Average population density of slums
- Average number of people in households
- Average number of people in households located in slums

From the sample questionnaire, we collected data on the average labor income per capita as well as the average age of the population. However, notice that, differently from the results of the universe of the Brazilian census, the sample dataset does not identify whether the household lives in slums. Hence, we constructed a proxy to identify whether each household lived in a slum. More precisely, a household is considered to live in a slum if any of the following conditions are met: It does not have a toilet; It has a lack of essential public services and utilities (sewage, electricity, garbage collection, or piped water); There are more than four people per bedroom. After classifying housing units as slums, we tabulated the aforementioned income and demographic variables.

Covid RADAR - Jun/2020 - (<https://www.covidradar.org.br>): Covid Radar is a collective of more than 40 companies and organizations that coordinate efforts to build a reliable dataset on Covid-19 in Brazil. We use this website to collect municipality (city) level data on the number of private and public intensive care units (ICU) in Brazil.

ANS - Agência Nacional de Saúde Complementar - Mar/2020: From the ANS (National Supplementary Health Agency)—which provides legal and administrative regulation of the private health insurance market—we obtained municipality (city) level data on the number of people covered by private health insurance in Brazil.

Expenditures: IBGE's Brazilian Consumer Expenditure Survey (2008-2009) provides data on expenditure on goods. To calculate the fraction of income spent on goods consumed outside the home, we use the following items of the consumption basket: food away from home, public transportation, medical services, and entertainment.

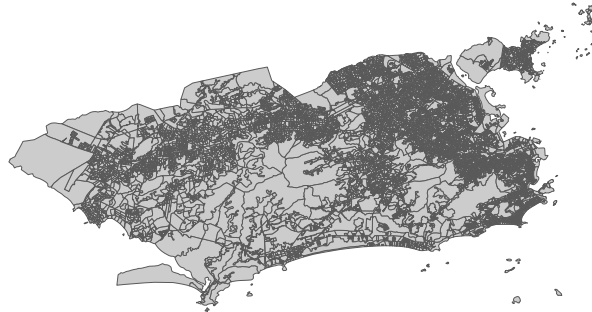
Social distancing: Inloco(<https://inloco.com.br>), a Brazilian technology company, collects anonymized location data from 60 million mobile phones in Brazil. By tracking with a 3-meter precision the device’s location and movements to different places (while ensuring user privacy), the company calculates the social distancing index for cities (municipalities) in Brazil, including the municipalities of Rio de Janeiro and Sao Paulo. For each municipality, the index calculates the percentage of devices that remained within a radius of 450 meters of the location identified as home. The index is computed daily and ranges from zero to one.

The company also measures the social distancing index for nonoverlapping areas within the municipalities of Rio de Janeiro and Sao Paulo, called “hexagons”. Each hexagon in Rio de Janeiro measures between 756,000 square meters and 760,000 square meters. In Sao Paulo, hexagons have between 738,000 square meters and 745,000 square meters. There are 841 hexagons in Rio de Janeiro and 1,301 hexagons in Sao Paulo. The methodology to calculate the index for hexagons is similar: the percentage of devices in each hexagon that remained within a radius of 450 meters of the location identified as home.

Census Tracts to Hexagons: The spatial unit of analysis in Section 2 (stylized fact 2) is the hexagon provided by Inloco. To compute the number of slum dwellers and the number of housing units in slums for each hexagon, we needed then to match those hexagons’ boundaries to the boundaries of the census tracts. Notice that there are more census tracts than hexagons in each city—9,853 and 17,990 census tracts in Rio de Janeiro and Sao Paulo, respectively. When aggregating census tracts into hexagons, we consider that the population and households are uniformly distributed within each census tract. Hence, we calculate the characteristic of the hexagon as the weighted average of the census tracts’ characteristics that intersect the hexagon, weighted by the fraction of the census tract’s area that intersects the hexagon area. See Figures A1 and A2 for the location of census tracts and hexagons in Rio de Janeiro and Sao Paulo, respectively. Figure A3 shows location of the 510 hexagons with slums in Rio de Janeiro, and the 598 with slums in Sao Paulo.

Figure A1: Rio de Janeiro: Census Tracts and Hexagons

(a) 9,853 Census Tracts in Rio de Janeiro



(b) 842 Hexagons in Rio de Janeiro



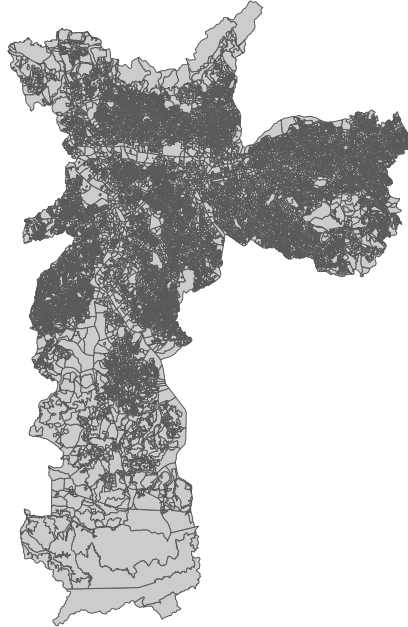
Notes. The figure shows the census tracts and the hexagons for the city of Rio de Janeiro.

Covid-19 data at the neighborhood level: We obtained the neighborhood-level number of Covid-19 cases and deaths from the following websites:

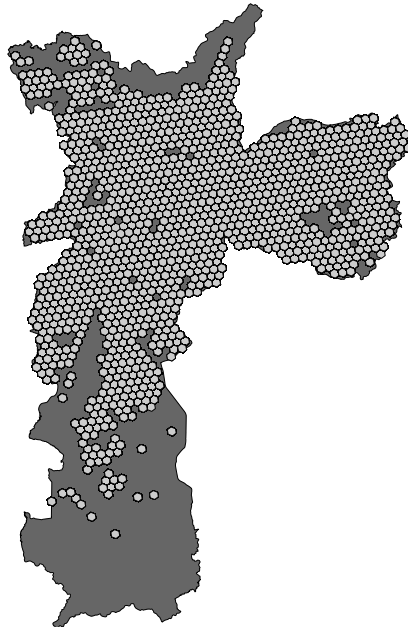
- <http://www.data.rio/>
- https://www.prefeitura.sp.gov.br/cidade/secretarias/upload/saude/COVID19_Relatorio_Situacional_SMS_20200529.pdf

Figure A2: São Paulo: Census Tracts and Hexagons

(a) 17,990 Census Tracts in São Paulo



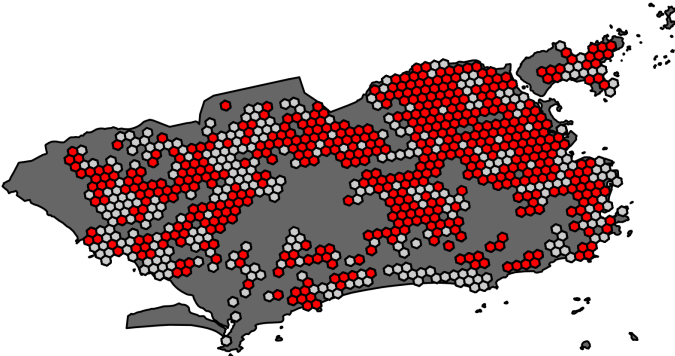
(b) 1,301 Hexagons in São Paulo



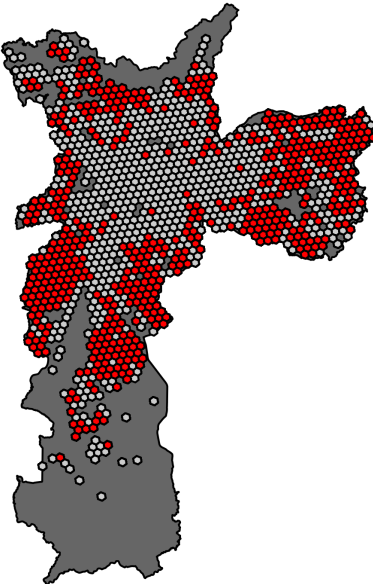
Notes. The figure shows the census tracts and the hexagons for the city of Sao Paulo.

Figure A3: Rio de Janeiro and São Paulo: Hexagons with slums (in red)

(a) Rio de Janeiro: Hexagons with slums (in red)



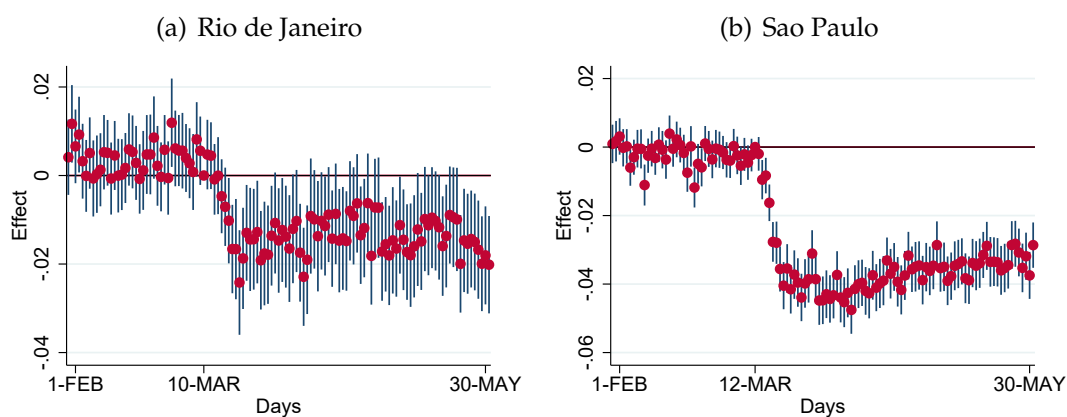
(b) São Paulo: : Hexagons with slums (in red)



Notes. The figures show the location of the hexagons (in red) with slums. There are 510 hexagons with slums in Rio de Janeiro, and the 598 with slums in Sao Paulo.

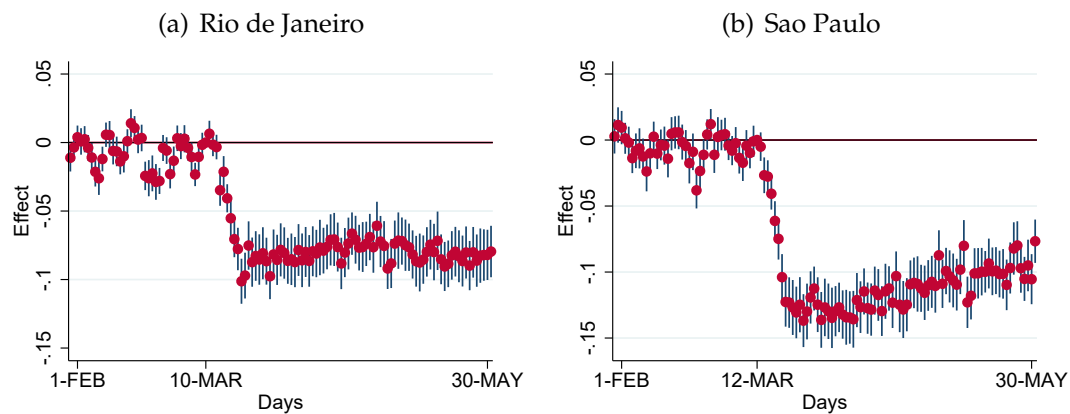
B Additional Tables and Figures

Figure B4: Event-Study Analysis (results without weights): Rio de Janeiro and Sao Paulo



Notes. The figure shows the results for coefficients estimated from Equation (1) without weighting for population. Coefficients should be interpreted as a change in percentage points. The treated dummy equals one for hexagons with at least one housing unit in a slum. We use 841 hexagons in Rio and 1,301 hexagons in Sao Paulo. Data are provided at the hexagon-day level. The base period corresponds to the day before each NPI. The dependent variable: social distancing index for hexagon h on day d . Standard Errors clustered at hexagon level. Confidence intervals: 95%.

**Figure B5: Event-Study Analysis (share of slums as the treatment dummy):
Rio de Janeiro and Sao Paulo**



Notes. The figure shows the results for coefficients estimated from Equation (1). The treatment is the share of slums in each hexagon. Coefficients should be interpreted as a change in percentage points. The treated dummy equals one for hexagons with at least one housing unit in a slum. Analysis at the hexagon-day level (841 hexagons in Rio and 1,301 hexagons in Sao Paulo). The base period corresponds to the day before each NPI. The dependent variable: social distancing index for hexagon h on day d . Standard Errors clustered at hexagon level. Confidence intervals: 95%.

Table B1: Difference-In-Differences: Average Impact of NPIs on Social Distancing

	Dependent variable: social distancing index		
	(i)	(ii)	(iii)
Post × Slum Dummy	-0.0386*** (0.0050)	-0.0429*** (0.0021)	-0.0429*** (0.0021)
Post × Slum Dummy × Rio Dummy			0.0043 (0.0054)
Control group mean	0.2989	0.2820	0.2903
Hexagon FE	Yes	Yes	Yes
Time FE	Yes	Yes	Yes
Time FE × Rio Dummy	-	-	Yes
Observations	97,684	151,504	249,188
Number of Hexagons	841	1,301	2,142
City	Rio de Janeiro	Sao Paulo	Rio de Janeiro & Sao Paulo

Notes. Each column displays the results from a separate regression. This table presents results from the estimation of the following difference-in-difference specification: $Y_{ht} = \beta \text{Post} \times \text{Slum Dummy} + \omega_h + \delta_t + \epsilon_{ht}$, where Y_{ht} is the social distancing index for hexagon h on day t , ω_h is the hexagon fixed effect, and δ_t is the time fixed effects. The unit of observation is a hexagon-day. The “treated group” is composed of hexagons with slums, while the comparison group is composed of hexagons without slums. The treated dummy “Post × Slum Dummy” equals one for hexagons with at least one housing unit in a slum for the days after implementation of the first NPI, and is zero otherwise. There are 841 hexagons in Rio de Janeiro and 1,301 hexagons in Sao Paulo. Robust standard errors (in parentheses) are clustered at the hexagon level. Observations are weighted by the hexagon population in 2010. The value for the control group mean is for the day before the implementation of the first NPI for each city. The regressions are for 120 days (from Feb 1 to May 30, 2020). Coefficients should be interpreted as a change in percentage points. Column (I) shows the results for the hexagons of Rio de Janeiro, while column (II) presents the results for Sao Paulo. Column (III) shows the results of a triple difference specification with all the hexagons of Rio de Janeiro and Sao Paulo (2,142 in total), where Rio Dummy equals one if the hexagon belongs to the city of Rio de Janeiro. The “Post × Slum Dummy × Rio Dummy” equals one for hexagons in Rio de Janeiro with at least one housing unit in a slum for the days after the implementation of the first NPI.

*** p<0.01, ** p<0.05, * p<0.1

Table B2: Cross-Section Analysis: Correlation between slums and hospitalizations/deaths

Dependent variable: in logs	Covid-19		Acute Respiratory Disease	
	Hospitalization	Death	Hospitalization	Death
	(i)	(ii)	(iii)	(iv)
Slum Dummy	0.1115** (0.0463)	0.1010*** (0.0378)	0.3588*** (0.0435)	0.0731** (0.0339)
Observations	1,301	1,301	1,301	1,301
Number of Hexagons	1,301	1,301	1,301	1,301
City	Sao Paulo	Sao Paulo	Sao Paulo	Sao Paulo

Notes. Each column displays the results from a separate cross-section regression. This table presents results from the estimation of the following specification: $Y_h = \alpha + \tau I_h + \epsilon_d$, where Y_h is the outcome variable (hospitalizations and deaths) for each hexagon h and the “Slum Dummy” I_h equals one for hexagons with slums and zero otherwise. The unit of observation is a hexagon. There are 1,301 hexagons in Sao Paulo. Robust standard errors (in parentheses). The regressions for the accumulate number of hospitalizations until May 18, 2020.

*** $p < 0.01$, ** $p < 0.05$, * $p < 0.1$

C Laws of Motion

In the main body (9) describes the overall laws of motion, and (10) describes the sub-part that determines the transitions for the healthy agents. The following contains the transitions for all other types.

To account for infected people one counts those who started last period healthy and get infected this period, but also those who started last period infected who neither develop severe symptoms nor recover:

$$M_{t+1}(i, g) = M_t(h, g)\pi(n_t(h, g) + \ell_t(h, g), \Pi_t(g)) + M_t(i, g)(1 - \phi(0))(1 - \alpha) \quad (16)$$

People with severe symptoms comprise those who entered last period infected and do not recover but instead develop more severe symptoms, as well as severely symptomatic individuals from the previous period who neither die

nor recover:

$$M_{t+1}(s, g) = M_t(i, g)(1 - \phi(0))\alpha + M_t(s, g)(1 - \delta_t(g))(1 - \phi(1)) \quad (17)$$

Recovered and therefore resistant individuals comprise those who were infected and recover, those with severe symptoms who do not die but recover, and resistant individuals from the previous period:

$$M_{t+1}(r, g) = M_t(i, a)\phi(0) + M_t(s, g)\phi(1) + M_t(r, g) \quad (18)$$

The right hand sides of equations (16) to (18) gives the map T_j for states $j = i, s, r$.

For accounting purposes, the measure of deceased agents as a result of Covid-19 is given by new Covid deaths and those who died of it in previous periods:

$$M_{t+1}(\text{deceased}, g) = M_t(\text{deceased}, g) + (1 - \phi(1))\delta_t(g)M_t(s, g),$$

while the number of newly infected people is given by healthy agents who get infected

$$N_{t+1}(i, g) = M_t(h, g)\pi(n_t(h, g) + \ell_t(h, g), \Pi_t(g)).$$

D Details on Calibration

D.1 Basic Reproduction Number - R_0

The probability that an infected agent leaves such state is: $\phi(0) + (1 - \phi(0))\alpha$. This is the probability of recovery and the probability that the agent switches to the serious symptoms case. Hence, the expected amount of time one stays in

state i is:

$$T_i = \frac{1}{\phi(0) + (1 - \phi(0))\alpha}.$$

The probability that an agent with serious symptoms leaves such state is: $\phi(1) + (1 - \phi(1))\delta$. This is the probability of recovery and the death-because-of-Covid probability. Hence, the expected amount of time one stays in state s is:

$$T_s = \frac{1}{\phi(1) + (1 - \phi(1))\delta}.$$

Now, the probability that one moves from the i state to the s state is given by:

$$P_s = \frac{(1 - \phi(0))\alpha}{1 - (1 - \phi(0))(1 - \alpha)}.$$

Note that the expressions above should be functions of one's group g , but we have suppressed this for notational convenience.

Let $\tilde{n}(g)$ denote the amount of time an infected person of group g spends outside. Let $\bar{\ell}$ be the interaction time for people with serious symptoms. Finally, let \bar{n} be the average (across groups) amount of time people spend outside. At the outset of the disease, a measure 1 of the population is healthy.

Then, $R_0(g)$ (i.e. for an infected person of group g) is given by:

$$R_0(g) = [\tilde{n}(g)T_i(g) + \bar{\ell}P_s(g)T_s(g)] \bar{n}\Pi_0.$$

This is the average number of people someone infects (for a person of a given group). The economy's R_0 will be the weighted average across groups:

$$R_0 = \sum_a \omega(g)R_0(g),$$

where $\omega(g)$ is the weight of group g in the population.

D.2 Computing Weekly Rates

Consider an agent that is infected with Covid-19. He may recover with probability $\phi(0)$ or develop serious symptoms with probability α . The following table gives what happens to a measure 1 of agents that are infected right now over the course of the next few weeks.

Week	Frac recovered	Frac still infected	Frac w/ symptoms
1	$\phi(0)$	$(1 - \phi(0))(1 - \alpha)$	$(1 - \phi(0))\alpha$
2	$(1 - \phi(0))(1 - \alpha)\phi(0)$	$[(1 - \phi(0))(1 - \alpha)]^2$	$(1 - \phi(0))(1 - \alpha)(1 - \phi(0))\alpha$
3	$[(1 - \phi(0))(1 - \alpha)]^2 \phi(0)$	$[(1 - \phi(0))(1 - \alpha)]^3$	$[(1 - \phi(0))(1 - \alpha)]^2 (1 - \phi(0))\alpha$
4

Thus, the fraction of people that will develop symptoms F_s is given by

$$\begin{aligned}
 F_s &= (1 - \phi(0))\alpha + (1 - \phi(0))(1 - \alpha)(1 - \phi(0))\alpha + [(1 - \phi(0))(1 - \alpha)]^2 (1 - \phi(0))\alpha + \dots \\
 &= (1 - \phi(0))\alpha [1 + (1 - \phi(0))(1 - \alpha) + [(1 - \phi(0))(1 - \alpha)]^2 + \dots] \\
 &= (1 - \phi(0))\alpha \frac{1}{1 - (1 - \phi(0))(1 - \alpha)}.
 \end{aligned}$$

Solving out for α gives

$$\alpha = \frac{B\phi(0)}{1 - B(1 - \phi(0))},$$

where $B = F_s/(1 - \phi(0))$. With $\phi(0)$ given by the average time for recovery, one can use the formula above to get α .

We can do something similar for agents with symptoms to figure out at what rate they die. Here is the table:

Week	Frac recovered	Frac still w symptoms	Frac dead
1	$\phi(1)$	$(1 - \phi(1))(1 - \delta)$	$(1 - \phi(1))\delta$
2	$(1 - \phi(1))(1 - \delta)\phi(1)$	$[(1 - \phi(1))(1 - \delta)]^2$	$(1 - \phi(1))(1 - \delta)(1 - \phi(1))\delta$
3	$[(1 - \phi(1))(1 - \delta)]^2 \phi(1)$	$[(1 - \phi(1))(1 - \delta)]^3$	$[(1 - \phi(1))(1 - \delta)]^2 (1 - \phi(1))\delta$
4

Using the same steps above and denoting the fraction that die by F_d , we get:

$$\delta = \frac{A\phi(1)}{1 - A(1 - \phi(1))},$$

where $A = F_d/(1 - \phi(1))$.

D.3 Implementing Lockdowns in the Model

In Section 6.2, we implement a variety of shelter-at-home policies. We achieve the desired lockdown by setting the policy parameter $\lambda(j, g)$ to the value necessary to induce the agent to comply with the policy. The next table reports the calibrated values of $\lambda(j, g)$ for each policy.

Lockdown intensity	λ_p	
	Non-infected	Infected
25%	1.88	0
50%	6.45	4.46
75%	33.4	31.45