

DISCUSSION PAPER SERIES

No. 10962

**TARIFF REDUCTIONS, ENTRY, AND
WELFARE: THEORY AND EVIDENCE FOR
THE LAST TWO DECADES**

Lorenzo Caliendo, Robert Feenstra, John Romalis
and Alan M. Taylor

***INTERNATIONAL TRADE AND
REGIONAL ECONOMICS***



TARIFF REDUCTIONS, ENTRY, AND WELFARE: THEORY AND EVIDENCE FOR THE LAST TWO DECADES

Lorenzo Caliendo, Robert Feenstra, John Romalis and Alan M. Taylor

Discussion Paper No. 10962

November 2015

This Revision May 2020

Centre for Economic Policy Research
33 Great Sutton Street, London EC1V 0DX, UK
Tel: (44 20) 7183 8801
www.cepr.org

This Discussion Paper is issued under the auspices of the Centre's research programme in **INTERNATIONAL TRADE AND REGIONAL ECONOMICS**. Any opinions expressed here are those of the author(s) and not those of the Centre for Economic Policy Research. Research disseminated by CEPR may include views on policy, but the Centre itself takes no institutional policy positions.

The Centre for Economic Policy Research was established in 1983 as an educational charity, to promote independent analysis and public discussion of open economies and the relations among them. It is pluralist and non-partisan, bringing economic research to bear on the analysis of medium- and long-run policy questions.

These Discussion Papers often represent preliminary or incomplete work, circulated to encourage discussion and comment. Citation and use of such a paper should take account of its provisional character.

Copyright: Lorenzo Caliendo, Robert Feenstra, John Romalis and Alan M. Taylor

TARIFF REDUCTIONS, ENTRY, AND WELFARE: THEORY AND EVIDENCE FOR THE LAST TWO DECADES[†]

Abstract

We show in a multi-sector, heterogeneous-firm trade model that the effect of tariffs on entry, especially in the presence of production linkages, can reverse the traditional positive optimal tariff argument. We then use a new tariff dataset, and apply it to a 189-country, 15-sector version of our model, to quantify the trade, entry, and welfare effects of trade liberalization over the period 1990–2010. We find that the impact on firm entry was larger in Advanced relative to Emerging and Developing countries; that slightly more than three-quarters of the total gains from trade are a consequence of the reductions in MFN tariffs (the Uruguay Round), with two-thirds of the remainder due to preferential trade agreements and one third due to the hypothetical movement to free trade; and that free trade would bring gains for some Emerging and Developing countries, in particular. Ten economies in our sample – including China, Hong Kong, India, Israel, Vietnam, and five more remote countries – would have benefited from going beyond free trade to subsidizing their imports in 1990, since their optimal tariffs are negative.

JEL Classification: F10, F11, F12, F13, F15, F17, F60 and F62

Keywords: bilateralism, gains from trade, input- output linkages, monopolistic competition, multilateralism and trade policy

Lorenzo Caliendo lorenzo.caliendo@yale.edu
Yale University and NBER

Robert Feenstra rcfeenstra@ucdavis.edu
UC Davis and NBER

John Romalis john.romalis@sydney.edu.au
University of Sydney and NBER

Alan M. Taylor amtaylor@ucdavis.edu
UC Davis, NBER and CEPR

[†]Financial support from the National Science Foundation is gratefully acknowledged. We thank Federico Esposito and Mingzhi Xu for excellent research assistance. For their helpful comments we thank Andres Rodríguez-Clare, Kyle Bagwell, Fernando Parro, Stephen Redding, EstebanmRossi-Hansberg, Ina Simonovska, and seminar participants. The usual disclaimer applies

Tariff Reductions, Entry, and Welfare: Theory and Evidence for the Last Two Decades*

Lorenzo Caliendo
Yale University and NBER

Robert C. Feenstra
UC Davis and NBER

John Romalis
University of Sydney and NBER

Alan M. Taylor
UC Davis, NBER, and CEPR

May 2020

Abstract

We show in a multi-sector, heterogeneous-firm trade model that the effect of tariffs on entry, especially in the presence of production linkages, can reverse the traditional positive optimal-tariff argument. We then use a new tariff dataset, and apply it to a 189-country, 15-sector version of our model, to quantify the trade, entry, and welfare effects of trade liberalization over the period 1990–2010. We find that the impact on firm entry was larger in Advanced relative to Emerging and Developing countries; that slightly more than three-quarters of the total gains from trade are a consequence of the reductions in MFN tariffs (the Uruguay Round), with two-thirds of the remainder due to preferential trade agreements and one third due to the hypothetical movement to free trade; and that free trade would bring gains for some Emerging and Developing countries, in particular. Ten economies in our sample – including China, Hong Kong, India, Israel, Vietnam, and five more remote countries – would have benefited from going beyond free trade to subsidizing their imports in 1990, since their optimal tariffs are negative.

Keywords: trade policy, monopolistic competition, gains from trade, input-output linkages, multilateralism, bilateralism.

JEL Codes: F10, F11, F12, F13, F15, F17, F60, F62.

*Contact information: Caliendo: lorenzo.caliendo@yale.edu; Feenstra, rfeenstra@ucdavis.edu; Romalis, john.romalis@sydney.edu.au; Taylor, amtaylor@ucdavis.edu. Financial support from the National Science Foundation is gratefully acknowledged. We thank Federico Esposito, Anna Ignatenko and Mingzhi Xu for excellent research assistance. For their helpful comments we thank Andres Rodríguez-Clare, Kyle Bagwell, Fernando Parro, Stephen Redding, Esteban Rossi-Hansberg, Ina Simonovska, and seminar participants. The usual disclaimer applies.

1 Introduction

Tariffs have fallen significantly around the globe over the last two decades. Yet, very little is known about the trade, entry, and welfare effects generated by this unprecedented shift in trade policy. To study this, we build upon the most up-to-date model in international trade—with heterogeneous firms in the tradition of Melitz (2003) and Chaney (2008)—and extend this model to incorporate tariffs and the kind of input-output structure that is realistic for modern economies. With our model and a novel comprehensive tariff dataset we quantify the effects of arguably the most successful GATT/WTO process, the Uruguay Round. With these more general model foundations, we find that sectoral linkages and firm entry decisions can have meaningful impacts on trade and welfare, in ways not captured hitherto in many current-generation quantitative trade models.

Specifically, we find that the conventional optimal tariff argument – whereby a small tariff (starting near free trade) benefits the country applying it and harms its trading partners – can fail to hold in theory and for some countries of the world. What accounts for the differences between our results and any other model with (positive) optimal tariffs? The short answer is that in a multi-sector, Melitz-Chaney model there is an *entry distortion*, i.e., entry is not at the optimal level as it would be in a single-sector, CES model.¹ That distortion is seen most clearly in a two-sector, two-country version of the model that we use to derive our main theoretical findings.²

Consider a “manufacturing” sector where firms produce differentiated varieties under monopolistic competition, and a “services” sector where firms produce a non-tradable good under perfect competition. We first show that tariffs reduce entry relative to a free trade equilibrium. We then show that this reduction in firm entry contracts the output of the differentiated sector, raises its price index, and therefore lowers welfare, with tariff revenue only offsetting a part of this effect. We characterize the conditions under which import tariffs can be used to reduce this distortion and we show that, in the absence of any other policy instrument, it is possible that a *negative tariff* is the optimal policy. We also show how the presence of production linkages contributes importantly to this unusual result, which distinguishes our paper from most of the literature.³

We then use a 189-country/15-sector quantitative version of our model. We go well beyond recent quantitative exercises in expanding the data universe to build a tariff dataset that includes not just the usual sample of Advanced (e.g., OECD) economies, but also a large subsample of Emerging and Developing economies, using newly collected data going back to the 1980s.⁴ Our work

¹The social optimality of the one-sector case was analyzed by Dhingra and Morrow (2019).

²Nocco, Ottaviano, and Salto (2014) show that entry could also be inefficiently high in a heterogeneous firm model a la Melitz and Ottaviano (2008). More related to this work, Bagwell and Lee (2015) show that under the presence of an entry-externality, starting from a position of global free trade, a country could gain with an export subsidy. Lasharipour and Lugovsky (2019) in a general, multi-sector treatment of optimal tariffs, note that using tariffs in a second-best role to offset domestic monopoly distortions can conflict with the terms-of-trade motive.

³A notable exemption is Blanchard, Bown, and Johnson (2015), where they study optimal tariffs under the presence of production linkages but in the context of perfect competitive firms.

⁴We unify tariff schedules from five different sources. With more than 1 million observations per year in the 1980s, rising to 2 million by the 2000s, with our tariff data we can perform tariff policy experiments which could not be explored before now.

therefore permits a broader and more realistic computation of the retrospective, and prospective, gains from trade liberalization in both rich and poor nations, a step we think is crucial since it is in the poorer countries that trade liberalization has proceeded most rapidly since 1990, and in which there may be still significant scope for further tariff reductions in the future.

To sum up, our paper develops new theoretical results about optimal tariffs, entry, and welfare; it builds a new tariff dataset and compiles other data from high- and low-income countries in order to calibrate the model; and it uses the model to perform policy experiments to evaluate the gains from actual past trade liberalization and possible future gains yet to be realized.

We implement four policy experiments. First, we quantify the effects of arguably the most successful GATT/WTO process, the Uruguay Round.⁵ We do so by using the model to evaluate the economic effects of the observed change in Most Favored Nations (MFN) tariffs for countries at the product level from 1990 to 2010, focusing on the trade, entry, and welfare impacts. We then go beyond this Uruguay Round experiment and evaluate the impact of *all* observed changes in tariffs, namely MFN and preferential tariffs, over the same period; we refer to this model experiment as Uruguay Round + Preference. After that, we ask if there are any further potential gains in the world today from zeroing all tariffs, a counterfactual experiment we refer to as Free Trade. Finally, we also investigate whether, starting from a Free Trade position, the imposition of negative tariffs would be optimal for each country acting individually.

We find that the Uruguay Round had the largest impact. Those MFN tariff cuts accounts for 77% or slightly more than three-quarters of the total welfare gains across countries, the PTAs account for another 15% or two-thirds of the remaining gains, and the movement to Free trade for another 7% or one-third of the remaining gains. We find that free trade would bring notable gains for some Emerging and Developing countries, in particular. Ten economies in our sample – including China, Hong Kong, India, Israel, Vietnam, and five more remote countries – would have benefited from going beyond free trade to subsidizing their imports in 1990, since their optimal tariffs are negative.

When looking at countries by income group, we find that the distribution of gains across these two groups are quite different. For the Advanced economies, most countries gain and the gains do not vary widely. However, for Emerging and Developing economies, not all countries win, but the ones that do gain substantially. We also evaluate how commercial policy has affected the entry and exit of firms across markets. We find that tariffs affect firm entry in very different ways across countries. For instance, the reductions in tariffs as a consequence of the Uruguay Round generated considerable changes in entry and exit of firms across industries in Advanced economies, while there was a much smaller effect on Emerging economies. This is despite the fact that the Emerging economies have greater dispersion in the welfare impact of the Uruguay Round tariff cuts.

⁵Bagwell and Staiger (2010) survey recent economic research on trade agreements, with a special focus on the GATT/WTO. For earlier research on the impact of trade agreements, see, inter alia, Anderson and van Wincoop (2002), Baier and Bergstrand (2007; 2009), Deardorff (1998), Redding and Venables (2004), Rose (2004), Subramanian and Wei (2007), and Treffer (1993; 2006).

1.1 Comparison to the Literature

Balistreri, Hillberry, and Rutherford (2011) were the first to introduce *ad valorem* tariffs into a Melitz-Chaney model. They obtain substantial changes in entry in their quantitative model, which is based on GTAP and models the heterogeneous-firm sector as a single, aggregate manufacturing sector, with additional constant-returns sectors in the economy. As we show here, the presence of the additional sectors guarantees that changes in tariffs applied to the manufacturing sector will affect entry. Our approach makes further advances in several respects. We analytically solve for the impact of *ad valorem* tariffs on entry in a two-country version of our model with a single manufacturing sector, while in our more general quantitative model we use multiple heterogeneous-firm sectors. In addition, our tariff data are much more detailed than Balistreri, Hillberry, and Rutherford (2011), who consider a 50% tariff cut rather than the actual impact of the Uruguay Round.⁶

Like our study, Spearot (2016) analyzes the tariff cuts of 1994–2000 over a large group of countries, one that is only slightly smaller than the set of countries and the time period that we shall analyze. In his model, which includes trade in final goods only, he finds that while the majority of countries benefited from those tariff cuts, those benefits were skewed towards developing countries. In contrast, the benefits from zeroing all tariffs from their 2000 levels would be skewed towards advanced countries. Significantly, in his model, only about one-half of countries benefit from both tariff cuts (i.e., going from 1994 levels to zero), and few countries benefit from unilateral tariff cuts starting from 2000 levels (though the countries that do gain include India, Japan, Korea, and the U.S.). These results from Spearot (2016), emphasizing the disparate gains across groups of countries and the losses from unilateral tariff cuts in most cases, are very much in line with the conventional optimal tariff argument.⁷

Optimal tariffs are examined in a heterogeneous firm monopolistic competition model by Costinot, Rodríguez-Clare, and Werning (2016, henceforth CRW). They find that the selection of heterogeneous firms into exporting leads to an aggregate nonconvexity in the foreign production possibilities set between domestic goods and exports, which dampens the incentive for the home country to apply a tariff to improve its terms of trade. Nevertheless, if there is a Pareto distribution for firm productivities then the optimal tariff is still positive, but lower than it would otherwise be. It follows that individual countries will lose from removing small tariffs, so that mutual gains require multilateral tariff cuts.

Three important features of our model are responsible for some very profound differences between our results and those of Spearot and CRW. First, we allow for production linkages with

⁶Another difference is that Balistreri, Hillberry, and Rutherford (2011) estimate all the fixed costs in their model from GTAP data. In contrast, we use the “hat” algebra (Dekle, Eaton, and Kortum 2008) to solve for changes in the key variables, which avoids the need to estimate fixed costs.

⁷Another difference between our papers is that Spearot (2016) actually relies on the quadratic utility function in the spirit of Melitz and Ottaviano (2008). Because he does not assume an outside good, however, he argues that the results are much the same when using a CES utility function.

the kind of input-output structure that is realistic for modern economies, following Caliendo and Parro (2015, henceforth CP).⁸ Specifically, we have traded intermediate inputs making use of the non-traded finished goods as material inputs in their production. Second, we analyze only a simple import tariff, and not the full range of policy instruments as used by CRW. As they stress, having the full range of instruments available means that tariffs are never used to offset domestic distortions. Third, there is indeed a domestic distortion present in our model because we allow for the free entry of firms, and we find that entry is impacted by the use of tariffs. So, while a reduction in tariffs generates a terms-of-trade loss it generates a welfare gain by adjusting entry to its optimal level. As a result, the impact of tariffs on entry, especially in the presence of production linkages, can reverse the traditional positive optimal tariff argument.

This study also relates to recent work by Melitz and Redding (2015) who show, in a Melitz (2003) model, that after relaxing the assumption of a Pareto distribution of firm productivities assumed in Chaney (2008), changes in iceberg trade costs can impact entry and welfare. A contribution of this paper is to go further and clearly explain how tariffs affect entry, and ultimately welfare, in a Melitz (2003) model, even *without* relaxing the maintained assumption of a Pareto distribution of firm productivities.⁹

Two more recent contributions have also sought to consider *ad valorem* tariffs as opposed to iceberg transport costs in a Melitz-Chaney model: these are the works by Felbermayr, Jung, and Larch (2015) and Costinot and Rodríguez-Clare (2014, henceforth CR). The latter include tariffs in their analysis, but apply them to the variable production cost of imports; they allow for changes in entry in their theoretical model but do not focus on this margin in reporting their quantitative work. The former use tariffs applied to either the revenue or production cost of imports; but they hold entry fixed in their one-sector model. In an earlier version of this working paper, we carefully compared the difference between applying tariffs to the revenue cost of imports versus applying tariffs to the variable production cost of imports, and that analysis is briefly summarized in Appendix A. There are some notable theoretical differences between these two cases—in particular, regarding whether changes in tariffs affect entry in a one-sector model. As explained more fully in Appendix A, we assert that modeling tariffs as applying to the revenue cost of imports is the realistic choice that matches customs practices, and is also a theoretically parsimonious benchmark case, so we will focus only on that case here.

The potential for tariffs to impact entry, and hence welfare, has not received sufficient attention in the literature. We believe that one reason for this is that iceberg transport costs do not affect

⁸The importance of the input-output structure has been made clear in Yi (2003), CP and in Costinot and Rodríguez-Clare (2014). The latter used uniform tariff cuts to show how the gains from trade are systematically larger when the input-output structure is taken into account. Here are echoes of an earlier trade literature on distortions due to high effective rates of protection, and more recent empirical trade and growth papers highlighting the damaging effects of tariffs on inputs (Goldberg et al. 2010; Estevadeordal and Taylor 2013).

⁹Contemporaneous work continues on this theme. Bagwell and Lee (2015) consider tariffs and entry in the Melitz-Ottaviano (2008) model. Hsieh et al. (2016) adopt a Melitz and Redding (2015) iceberg structure, and empirically examine the selection effect on firms due to the Canada-U.S. free trade agreement, which occurred just prior to our sample period.

entry in a standard one-sector Melitz-Chaney model, as shown most clearly by Arkolakis, Costinot, and Rodríguez-Clare (2012, henceforth ACR).¹⁰

Finally, we note that strong evidence of the impact of trade policy on entry is provided for the case of apparel exporters from Bangladesh by Cherkashin, Demidova, Kee, and Krishna (2015). They analyze how European Union (EU) preferences provided to these exporters led to an increase in entry and an increase in exports to both the EU and to the United States. We confirm in our quantitative exercise that changes in foreign tariffs impact entry in the exporting countries, and we find the greatest changes in entry for Advanced countries, which face the largest tariff reductions in Emerging and Developing markets.

The remainder of the paper is structured as follows. In Section 2 we briefly present the quantitative model. In Section 3, to develop intuition, we present some key results with the aid of a simplified two-sector two-country model. Section 4 describes the new tariff dataset and the rest of the data sources that we use in order to calibrate the 189-country/15-sector version of the model. Section 5 explains how we take the model to the data, and section 6 presents the empirical results which quantify the gains from tariff liberalization in the last 20 years, and the potential remaining gains from tariff liberalization going forward. Section 7 concludes. Throughout, all proofs and many details are relegated to the Appendix.

2 Model

Consider a world with M countries, indexed by i and j . There is a mass of L_i agents in each country i . There are S sectors indexed by s and s' . Agents consume nontradable finished goods from all sectors. The finished goods in turn are produced with intermediate goods from different sources, either traded or nontraded. Finished goods are also used as materials, i.e., inputs, for the production of intermediate goods, along with raw labor. Intermediate goods producers in sector s have heterogenous productivities φ (which, following convention, we will also use as an index for each producer, or firm). Specifically, upon entry, for which it pays a fixed cost, a firm's φ is drawn from the known distribution of productivities $G_s(\varphi)$, where we assume that $G_s(\varphi) = 1 - \varphi^{-\theta_s}$ follows a Pareto distribution with coefficient $\theta_s > 0$. We further impose the standard condition that $\theta_s + 1 > \sigma_s$, where σ_s is the elasticity of substitution of intermediate varieties defined later, so as to ensure that average aggregate productivity under constant elasticity of substitution (CES) aggregation is well defined.

¹⁰One of ACR's "macro" assumptions—which they label R2—is that aggregate profits in any country i (Π_i , measured gross of the entry fee) are a constant share of aggregate revenue (R_i), and that assumption is indeed satisfied in the special case of a Pareto distribution on productivity draws. In the further special case of a symmetric, one-sector, one-factor model, revenue equals the factor supply (L_i), since without loss of generality we can normalize wages $w_i = 1$. In turn, revenue is fixed, aggregate profits are also fixed, and since these equal the number of entrants N times the fixed costs of entry f_i^E , it follows that $N_i = \Pi_i/f_i^E \propto R_i/f_i^E = L_i/f_i^E$, which in turn is also then fixed. Therefore, changes in iceberg transport costs have no impact on entry in this very special case. In a multi-sector model, however, the factor supply to each sector is not fixed so it is quite possible that changes in iceberg transport costs will affect entry, as ACR (section IV.A) note.

In addition to fixed entry costs, the intermediate goods producers face fixed operating costs, and costs of trading, in all markets. As regards trading costs, traded intermediate goods are subject to two types of bilateral trade frictions. First, as is conventional there is an iceberg trade cost in the *ad valorem* form $\tau_{ji,s} - 1 > 0$ of shipping goods from j to i , where we assume $\tau_{ii,s} = 1$ for all i, s . Second, we introduce the *ad valorem* tariff $t_{ji,s}$ which is applied to the *revenue cost* of imports from j to i , where we assume that $t_{ii,s} = 0$ for all i, s . Intermediate goods producers decide how much to supply to the domestic market and how much to supply abroad. Intermediate producers in sector s and country j pay a fixed operating cost $f_{ji,s}$ in order to produce goods for market i , and we make the standard assumption that home operation is less costly than export operation, so that $f_{ii,s} < f_{ji,s}$ for all $j \neq i$. As a result of these fixed costs, less efficient producers of intermediate goods do not find it profitable to supply certain markets, and some do not operate even in the home market. We denote by $\varphi_{ji,s}^*$ the cutoff or threshold productivity level such that all firms in each sector s and country j with $\varphi < \varphi_{ji,s}^*$ are not active in exporting to country i , or not active in the home market, in the case where $\varphi < \varphi_{ii,s}^*$.

Denote by $N_{j,s}$ the mass of entering firms in equilibrium in each sector s and country j . By virtue of the Pareto distribution, the number of firms/products actually sold in sector s , from country j , into market i is the the total number of entering firms times the mass of firms above the relevant threshold, which is given by $N_{j,s} \left[1 - G_s \left(\varphi_{ji,s}^* \right) \right] = N_{j,s} \varphi_{ji,s}^{*\theta_s}$.

We assume that agents have Cobb-Douglas preferences where $\alpha_{i,s}$ are the expenditure shares on consumed goods $C_{i,s}$. Agents derive income from two sources, labor income and rebated tariff revenue, and firm profits will be equal to zero by an assumption of free entry. We let R_i represent the income of the agents in country i , and $P_{i,s}$ to the price of finished good s in country i .

2.1 Finished goods producers

Finished goods are produced with a nested CES production function: the upper-level distinguishes home and foreign inputs, with an elasticity of substitution of $\omega_s > 1$ between these two groups; and the lower-level is defined over varieties of home and varieties of foreign intermediate inputs, with an elasticity of substitution $\sigma_s > \omega_s$ between varieties within each group.¹¹

The home demand for home intermediates of variety φ sold in sector s in country i is given by

$$q_{ii,s}(\varphi) = \left(\frac{p_{ii,s}(\varphi)}{P_{ii,s}} \right)^{-\sigma_s} \left(\frac{P_{ii,s}}{P_{i,s}} \right)^{-\omega_s} \frac{Y_{i,s}}{P_{i,s}}, \quad (1)$$

where $Y_{i,s} = P_{i,s}Q_{i,s}$ is the value of output of the finished good s in i , and $P_{ii,s}$ is the CES price index for home intermediate inputs in sector s .

¹¹This nested structure is also used by Feenstra, Luck, Obstfeld, and Russ (2018). We use this nested structure here (in contrast to our working paper) because Kucheryavyy, Lyn, and Rodríguez-Clare (2016) have recently shown the potential for corner solutions in multi-sector monopolistic competition models. That potential is offset by adding the extra upper-level curvature in the nested CES structure.

Likewise, home demand for imported intermediates sold from country $j \neq i$ in country i is

$$q_{ji,s}(\varphi) = \left(\frac{p_{ji,s}(\varphi)}{P_{i,s}^F} \right)^{-\sigma_s} \left(\frac{P_{i,s}^F}{P_{i,s}} \right)^{-\omega_s} \frac{Y_{i,s}}{P_{i,s}}, \quad (2)$$

where $P_{i,s}^F$ is the CES price index of foreign intermediate inputs, *inclusive of tariffs*. Finally, with these results, we can derive the aggregate CES prices index $P_{i,s}$ over all varieties,

$$P_{i,s} = \left[(P_{ii,s})^{1-\omega_s} + (P_{i,s}^F)^{1-\omega_s} \right]^{\frac{1}{1-\omega_s}}. \quad (3)$$

2.2 Intermediate goods producers

The intermediate good firm in sector s in country i with variety φ employs labor and uses materials from all sectors (production linkages) and combines them using the following production function

$$q_{i,s}(\varphi) = \varphi l_{i,s}(\varphi)^{\gamma_{i,s}} \prod_{s'=1}^S m_{i,s's}(\varphi)^{\gamma_{i,s's}}, \quad (4)$$

where φ is the productivity draw of the firm, $l_{i,s}(\varphi)$ is labor demand, $m_{i,s's}(\varphi)$ is the quantity of materials used from sector s' , $\gamma_{i,s} \geq 0$ is the share in output of value added (here, labor costs), and $\gamma_{i,s's} \geq 0$ is the share in output of the cost of inputs from sector s' used by sector s (input-output coefficients). We assume that $\gamma_{i,s} + \sum_{s'=1}^S \gamma_{i,s's} = 1$.

The cost of the input bundle, or more simply the *input cost* index, is given by

$$x_{i,s} \equiv (w_i/\gamma_{i,s})^{\gamma_{i,s}} \prod_{s'=1}^S (P_{i,s'}/\gamma_{i,s's})^{\gamma_{i,s's}}. \quad (5)$$

This input cost index contains information on prices from all sectors in the economy and, clearly, the input cost directly affects production decisions in all sectors. This feature is a key distinction of our model, as compared to a one-sector model or a multi-sector model without input-output linkages.

Profit maximization Consider the profit maximization problem of supplying goods to market j . Profits are given by

$$\pi_{ij,s}(\varphi) = \max_{p_{ij,s}(\varphi) \geq 0} \left\{ \frac{p_{ij,s}(\varphi)}{1+t_{ij,s}} q_{ij,s}(\varphi) - \frac{x_{i,s}}{\varphi} \tau_{ij,s} q_{ij,s}(\varphi) - w_i f_{ij,s} \right\}, \quad (6)$$

subject to (2). The control variable in this problem is $\frac{p_{ij,s}(\varphi)}{1+t_{ij,s}}$, the net-of-tariff price received by the exporting firm.

As we can see, this price differs from the tariff-inclusive price $p_{ij,s}(\varphi)$ paid by the importer, and means that the sales revenue $p_{ij,s} q_{ij,s}$ is *divided by* the tariff factor $1+t_{ij,s}$ in order to obtain producer revenue in (6). Note that the quantity sold by the firm is $\tau_{ij,s} q_{ij,s}(\varphi)$ because of the

iceberg trade costs. So the costs of production $(x_{i,s}/\varphi) q_{ij,s}$ are *multiplied by* the iceberg trade costs $\tau_{ij,s}$ to obtain the costs in (6).

These are subtle but very important details. This discussion shows how the tariffs and iceberg trade costs enter the profit equation in slightly different ways, and follows from our assumption that the *ad valorem* tariff is applied to the sales revenue. In contrast, if the tariff was applied to only the costs of the imported product then the costs $(x_{i,s}/\varphi) q_{ij,s}$ would be multiplied by the product of the iceberg trade costs and the tariff factor, $\tau_{ij,s} (1 + t_{ij,s})$ in (6), so that the tariffs and iceberg costs would enter the firm's problem symmetrically.¹² We will see that this distinction between how tariffs and iceberg costs are modeled makes an important difference to the zero-profit-cutoff productivity that we solve for below.

The quantity demanded for imported inputs is then a function of this price plus the tariff, relative to the import price index of all intermediates in sector s in destination market i . Thus,

$$\frac{p_{ij,s}(\varphi)}{1 + t_{ij,s}} = \frac{\sigma_s}{\sigma_s - 1} \frac{x_{i,s} \tau_{ij,s}}{\varphi}, \quad (7)$$

$$q_{ij,s}(\varphi) = \left(\frac{\sigma_s}{\sigma_s - 1} \frac{x_{i,s} \tau_{ij,s}}{\varphi} \right)^{-\sigma_s} \frac{P_{j,s}^{F(\sigma_s - \omega_s)} P_{j,s}^{\omega_s - 1} Y_{j,s}}{(1 + t_{ij,s})^{\sigma_s}}. \quad (8)$$

The profits for sector s in country i from selling to market $j \neq i$ are given by the markup minus one, times unit cost pre-tariff, times output, less fixed costs:

$$\pi_{ij,s}(\varphi) = \frac{x_{i,s} \tau_{ij,s} q_{ij,s}(\varphi)}{(\sigma_s - 1)\varphi} - w_i f_{ij,s}. \quad (9)$$

The price $p_{ii,s}(\varphi)$ and quantity $q_{ii,s}(\varphi)$ of goods selling to the home market are obtained by using $t_{ij,s} = 0$, $\tau_{ij,s} = 1$, and by replacing the import price index $P_{i,s}^F$ with the home price index $P_{ii,s}$ in the above expressions.

¹²For clarity, the profit maximization equation in the case where the tariff was applied to firm *revenue* for the imported product, profits would be as in (6) and we can scale that up by a factor $(1 + t_{ij,s})$ to get,

$$(1 + t_{ij,s}) \pi_{ij,s}(\varphi) = \max_{p_{ij,s}(\varphi) \geq 0} \left\{ p_{ij,s}(\varphi) q_{ij,s}(\varphi) - \frac{x_{i,s}}{\varphi} \tau_{ij,s} (1 + t_{ij,s}) q_{ij,s}(\varphi) - w_i f_{ij,s} (1 + t_{ij,s}) \right\}.$$

In contrast, when the tariff is applied to only the firm *cost* for the imported product profits would be,

$$\pi_{ij,s}(\varphi) = \max_{p_{ij,s}(\varphi) \geq 0} \left\{ p_{ij,s}(\varphi) q_{ij,s}(\varphi) - \frac{x_{i,s}}{\varphi} \tau_{ij,s} (1 + t_{ij,s}) q_{ij,s}(\varphi) - w_i f_{ij,s} \right\}.$$

In both expressions we use the firm's destination price $p_{ij,s}$ and quantity sold $q_{ij,s}$, to make for comparability. From these two equations, viewed side-by-side, it is obvious that in the latter case the effect of cost tariffs and icebergs are totally symmetric, entering as $\tau_{ij,s} (1 + t_{ij,s})$, and setting aside the income effects arising for the cost tariff rebate which are absent in the case of icebergs.

2.3 Selection and Entry

Zero cutoff profit condition Given the presence of fixed operating costs, there exists a threshold level of productivity such that a firm in a given sector makes zero profit. Using the equilibrium conditions for prices and quantities derived before, the *zero cutoff profit* (ZCP) level of productivity in sector s for export sales is given for $i \neq j$ is determined by $\pi_{ij,s}(\varphi_{ij,s}^*) = 0$, namely

$$\varphi_{ij,s}^* = \left(\frac{\sigma_s}{\sigma_s - 1} \right) \left(\frac{\sigma_s w_i f_{ij,s} (1 + t_{ij,s})}{Y_{j,s} P_{j,s}^{F(\sigma_s - \omega_s)} P_{j,s}^{\omega_s - 1}} \right)^{\frac{1}{\sigma_s - 1}} x_{i,s} \tau_{ij,s} (1 + t_{ij,s}). \quad (10)$$

Note that a reduction in the tariff level affects the ZCP condition in a way that is different from a reduction in iceberg trade costs. This follows from our assumption that tariffs are applied to the sales value of the import, as discussed above. In practice, this means that a reduction in actual tariffs acts in the ZCP condition very similarly to a *joint reduction* in iceberg trade costs and in fixed costs.¹³ The gains from tariff reduction will take into account this implicit reduction in fixed costs, which will act so as to encourage the entry of exporters and increase export variety, as we show below.

Another feature of (10) that deserves attention is that the output $Y_{j,s}$ of sector s in country j appears in the denominator on the right. With country i exporting to country j in that sector, a higher output means that exporters can spread their fixed costs over greater sales, which therefore allows more firms to self-select into exporting. We therefore refer to the presence of $Y_{j,s}$ in (10) as a *selection effect*, and we will find that it enters our later equations, too.

Free entry As noted earlier, firms pay a fixed cost of entry $f_{i,s}^E$ in each sector, in units of labor, in order to allow them to take a draw from the known distribution of productivities $G_s(\varphi)$. Free entry implies that expected profits of firms have to equal entry costs in sector s and country i .

Using the equilibrium conditions (9) and (10), and the analogous conditions for the home market, and given the assumption of a Pareto distribution of productivities, we end up with the following equilibrium condition

$$\sum_{j=1}^M f_{ij,s} \varphi_{ij,s}^*{}^{-\theta_s} = \frac{\theta_s - \sigma_s + 1}{\sigma_s - 1} f_{i,s}^E, \quad (11)$$

which relates the ZCP levels of productivities to the fixed operating and entry costs $f_{ij,s}$ and $f_{i,s}^E$.

¹³In contrast, if tariffs are applied only to the costs of imported products, then they would have exactly the same effect on the zero-cutoff-profit condition as do iceberg trade costs $\tau_{ij,s}$, and would appear only as multiplying those trade costs above (i.e., as in the final terms in (10)). Under our maintained assumption that tariffs are applied to the sales revenue, they have the “extra” impact of effectively reduced fixed costs, too.

2.4 Price index

We define the average productivity level of the firms making intermediate goods in sector s sold in i and sourced from j as

$$\tilde{\varphi}_{ji,s} = \left(\int_{\varphi_{ji,s}^*}^{\infty} \varphi^{\sigma_s - 1} \mu_{ji,s}(\varphi) d\varphi \right)^{\frac{1}{\sigma_s - 1}}, \quad (12)$$

where $\mu_{ji,s}(\varphi) = g_s(\varphi) / \left[1 - G_s(\varphi_{ji,s}^*) \right]$ is the conditional distribution of productivities (that is, conditional on the variety φ being actively produced for this $\{i, j, s\}$ combination). Then using (3) and (7) we obtain

$$P_{i,s} = \left\{ \left(\varphi_{ii,s}^{* - \theta_s} N_{i,s} \right)^{\frac{1 - \omega_s}{1 - \sigma_s}} \left(\frac{\sigma_s}{\sigma_s - 1} \frac{x_{i,s}}{\tilde{\varphi}_{ii,s}} \right)^{1 - \omega_s} + \left[\sum_{j \neq i}^M \left(\varphi_{ji,s}^{* - \theta_s} N_{j,s} \right) \left(\frac{\sigma_s}{\sigma_s - 1} \frac{x_{j,s} \tau_{ji,s} (1 + t_{ji,s})}{\tilde{\varphi}_{ji,s}} \right)^{1 - \sigma_s} \right]^{\frac{1 - \omega_s}{1 - \sigma_s}} \right\}^{\frac{1}{1 - \omega_s}}, \quad (13)$$

where $\varphi_{ji,s}^{* - \theta_s} = \left[1 - G_s(\varphi_{ji,s}^*) \right]$ is the probability that an entering firm in country j actually exports to market i , so that the number of products actually sold are $N_{ji,s} \equiv \varphi_{ji,s}^{* - \theta_s} N_{j,s}$.

2.5 Trade balance and market clearing

Two steps remain to close the model, the first being to ensure that all entities obey their budget constraints, markets clear, and trade is balanced.

Expenditure shares Recall that $Y_{i,s} = P_{i,s} Q_{i,s}$ is the value of the output of the finished good s in country i , which is produced entirely from intermediate goods, these being either imported or produced domestically. Hence, this value of output equals the total expenditure on those intermediate goods.

Let $\lambda_{ji,s}$ denote the share of country's i total expenditure in sector s on intermediate goods from market j . In this share, integrating over sales of all varieties of s from j to i yields the numerator, and summing over all markets j gives the denominator. Using the conditions (7), (8), (12), and (13) we can obtain the following expression for the expenditure share on domestic inputs

$$\lambda_{ii,s} = \varphi_{ii,s}^{* - \theta_s} N_{i,s} \left(\frac{\sigma_s}{\sigma_s - 1} \frac{x_{i,s}}{\tilde{\varphi}_{ii,s} P_{ii,s}} \right)^{1 - \sigma_s} \left(\frac{P_{ii,s}}{P_{i,s}} \right)^{1 - \omega_s}, \quad (14)$$

and on imported inputs

$$\lambda_{ji,s} = \varphi_{ji,s}^{* - \theta_s} N_{j,s} \left(\frac{\sigma_s}{\sigma_s - 1} \frac{\tau_{ji,s} x_{j,s} (1 + t_{ji,s})}{\tilde{\varphi}_{ji,s} P_{i,s}^F} \right)^{1 - \sigma_s} \left(\frac{P_{i,s}^F}{P_{i,s}} \right)^{1 - \omega_s}. \quad (15)$$

Sectoral trade flows We now solve for sectoral exports and imports and impose balanced trade.

Consider sector s imports first. The total expenditure by country j on country i intermediate goods is given by $\lambda_{ij,s} Y_{j,s}$. Due to the presence of tariffs not all of this expenditure reaches producers in country j . The tariff-adjusted expenditure in country j on goods produced in country i , or exports from i to j , is $E_{ij,s} \equiv \frac{\lambda_{ij,s}}{1+t_{ij,s}} Y_{j,s}$.

Of course, that term is identical to imports arriving in j from i . Therefore, total *exports* from country i , *not* including goods that are sold domestically, are given by

$$E_{i,s} \equiv \sum_{j \neq i} E_{ij,s} = \sum_{j \neq i} \frac{\lambda_{ij,s}}{1+t_{ij,s}} Y_{j,s}, \quad (16)$$

and total *imports* are given by $\sum_{j \neq i} E_{ji,s} = \sum_{j \neq i} \frac{\lambda_{ji,s}}{1+t_{ji,s}} Y_{i,s}$.

Now that we have derived the sectoral trade flows, we define the trade balance condition,

$$\sum_{s=1}^S \sum_{j \neq i} \frac{\lambda_{ji,s}}{1+t_{ji,s}} Y_{i,s} = \sum_{s=1}^S \sum_{j \neq i} \frac{\lambda_{ij,s}}{1+t_{ij,s}} Y_{j,s}. \quad (17)$$

Goods Market Equilibrium We can also define sectoral, $T_{i,s}$, and total, T_i , tariff revenue as $T_i = \sum_{s=1}^S T_{is} = \sum_{s=1}^S \sum_{j \neq i} t_{ji,s} E_{ji,s}$. With that, the expenditure on finished goods from sector s by households in country i is given by $\alpha_{i,s} R_i$, where R_i is total expenditure consisting of labor income plus this redistributed tariff revenue, $R_i = w_i L_i + T_i$.

The total value of production of all intermediate goods in sector s in country i is given by $\frac{\sigma_s - 1}{\sigma_s} \sum_{j=1}^M \frac{\lambda_{ij,s}}{1+t_{ij,s}} Y_{j,s}$; namely, the net-of-tariff value of sector s goods that are sold locally and abroad adjusted by markups. Given the input-output coefficients, a share $\gamma_{i,s's}$ of this gross production is then spent on intermediate inputs from sector s' . Therefore, the materials from sector s' demanded in sector s for the production of intermediate goods is then given by $\gamma_{i,s's} \frac{\sigma_s - 1}{\sigma_s} \sum_{j=1}^M \frac{\lambda_{ij,s}}{1+t_{ij,s}} Y_{j,s}$.

We can then obtain the total demand for the output of sector s of country i , which goes to both consumers as finished goods and to firms for intermediate use (the term here in braces), and which must equal total supply of that output:

$$Y_{i,s} = \alpha_{i,s} (w_i L_i + T_i) + \sum_{s'=1}^S \tilde{\gamma}_{i,ss'} \sum_{j=1}^M \frac{\lambda_{ij,s'}}{1+t_{ij,s'}} Y_{j,s'}. \quad (18)$$

To explain this specification, recall that fixed costs are paid in units of labor. Then the value of output net of markups in each sector, $\left(\frac{\sigma_{s'} - 1}{\sigma_{s'}}\right) Y_{j,s'}$, equals the value of intermediate inputs used in their production, and these generate demand for the output $Y_{i,s}$ used as materials to produce those intermediate inputs. We define the combined parameters $\tilde{\gamma}_{i,ss'} \equiv \gamma_{i,ss'} \left(\frac{\sigma_{s'} - 1}{\sigma_{s'}}\right)$ to reflect the demand generated in sector s' for the output in sector s .¹⁴

¹⁴If fixed costs are instead paid with the input bundle that costs $x_{i,s'}$, the same bundle used in variable costs, then the value of those fixed costs are measured by the markups earned in sector s' . So rather than deducting the markup from the value of final goods, we use the full value $Y_{j,s'}$ in sector s' to generate demand for the final goods in sector s , according to the input-output coefficient $\tilde{\gamma}_{i,ss'} \equiv \gamma_{i,ss'}$.

2.6 Firm Entry and Product Variety

To close the model we need to tackle selection and entry, solving for the mass of firms $N_{i,s}$ entering in country i and sector s , and the productivity cutoffs $\varphi_{ij,s}^*$ for the varieties produced for market j .

To solve for product variety, use (10) for $i \neq j$ and the average value $\tilde{\varphi}_{ij,s}$, substituting into (15) we obtain an equation governing the cutoffs $\varphi_{ij,s}^*$,

$$\lambda_{ij,s} = \varphi_{ij,s}^*{}^{-\theta_s} N_{i,s} \left(\frac{\sigma_s w_i f_{ij,s} (1 + t_{ij,s})}{Y_{j,s}} \right) \left(\frac{\theta_s}{\theta_s + 1 - \sigma_s} \right). \quad (19)$$

Next, multiplying this equation by $Y_{j,s}/(1 + t_{ij,s})$, summing over j and making use of (16) and (11), we obtain an expression for total domestic plus international sales of intermediate inputs in sector s by country i ,

$$E_{ii,s} + E_{i,s} = \sum_{j=1}^M \varphi_{ij,s}^*{}^{-\theta_s} N_{i,s} \left(\frac{\sigma_s w_i f_{ij,s}}{\theta_s + 1 - \sigma_s} \right) = N_{i,s} w_i f_{i,s}^E \left(\frac{\theta_s \sigma_s}{\sigma_s - 1} \right), \quad (20)$$

from which we can obtain an equation governing the mass of entrants $N_{i,s}$, namely

$$N_{i,s} = (E_{ii,s} + E_{i,s}) \left/ \left[w_i f_{i,s}^E \left(\frac{\theta_s \sigma_s}{\sigma_s - 1} \right) \right] \right. \quad (21)$$

It may appear surprising that the total domestic plus international sales of intermediate inputs ($E_{ii,s} + E_{i,s}$) is so tightly linked to the mass of entrants $N_{i,s}$. But recall from the introduction that the condition from ACR that aggregate profits in an economy, which equal entry times the fixed costs of entry, are proportional to the labor force: therefore, entry is fully determined by the labor force in each country. Equation (20) is the analogous result here: entry times fixed costs of entry is proportional to domestic sales plus exports in each sector. But here, exports will depend on *ad valorem* tariffs, as is clear from (16) and the share equations in (15).

2.7 Changes in the Price Index

Our final step is to solve for changes in the price index of country i due to any changes in *ad valorem* tariffs or trade costs. For convenience when comparing to the existing literature, let us focus on the case where $\omega_s = \sigma_s$, so that the domestic and foreign varieties all substitute with the elasticity σ_s . In addition, let us choose the wage of country i as the numeraire, $w_i \equiv 1$.

Substituting (10) into (19) and differentiating, we readily obtain

$$\frac{d\lambda_{ii,s}}{\lambda_{ii,s}} = \frac{dN_{i,s}}{N_{i,s}} + \theta_s \left(\frac{dP_{i,s}}{P_{i,s}} - \sum_{s'=1}^S \gamma_{i,ss'} \frac{dP_{i,s'}}{P_{i,s'}} \right) + \left(\frac{\theta_s}{\sigma_s - 1} - 1 \right) \frac{dY_{i,s}}{Y_{i,s}}.$$

We can invert this equation to solve for price index changes $d \ln P_{i,s}$ in all sectors s , but it requires matrix notation to deal with the input-output coefficients $\gamma_{i,ss'}$. Once again, for convenience in

comparing to existing literature, let us simplify and suppose that $\gamma_{i,ss'} = 0$ for $s \neq s'$, so the input-output matrix is diagonal. Then we can readily solve for the price index changes, with

$$\frac{dP_{i,s}}{P_{i,s}} = \frac{1}{\theta_s(1 - \gamma_{i,ss})} \left[\underbrace{\frac{d\lambda_{ii,s}}{\lambda_{ii,s}}}_{\text{trade volume}} - \underbrace{\frac{dN_{i,s}}{N_{i,s}}}_{\text{entry}} - \underbrace{\left(\frac{\theta_s}{\sigma_s - 1} - 1\right)}_{\text{selection}} \frac{dY_{i,s}}{Y_{i,s}} \right]. \quad (22)$$

The first term on the right of this equation is precisely the rise in prices, and hence loss in welfare, due to the change in *trade volume*, which here, is in the form of the change in home share, $d \ln \lambda_{ii,s}$, just as in ACR. What is new are the next two terms on the right. The second term is due to the *entry* of firms into sector s in country i , which *ceteris paribus* serves to lower the price index and raise welfare. This term does not appear in a one-sector version of the Melitz-Chaney model, because entry is fixed in that case. The third term on the right reflects the change in output of the finished good in sector i , $d \ln Y_{i,s}$. From our prior discussion, just after equation (10), we can regard this term as capturing the *selection* of firms into this sector. Thus, in general, we see that both *entry* and *selection* are needed, in addition to the change in the home share, to obtain the true change in the price index, and in welfare. These additional terms could also arise in principle in multi-sector versions of ACR and CR, though they are not stressed by those authors. To make further progress on determining the overall change in welfare, we must solve for all these endogenous changes. This is what we do next on our two-country, two-sector version of the model.

3 Illustrative Two-Country, Two-Sector Model

To illustrate some key insights from our model, we now consider the case where there are two initially identical countries and two sectors, with only the home country $i = H$ then applying a tariff $t_H \equiv t$ on intermediate inputs imported from the foreign country, $j = F$. As we shall see, this case allows us to obtain a closed-form solution for the comparative statics with respect to small changes in the home tariff dt .

Having just two sectors allows us to be more specific about the input-output structure. The first sector (“manufactures”) will be as we have assumed above, with traded intermediate inputs and a nontraded output good that is consumed and is also used as a material in the production of intermediate inputs domestically. So this sector has both backward and forward linkages. For convenience we ignore the nested CES structure and treat the upper- and lower-level elasticities as both equal to $\omega_s = \sigma_s = \sigma$, while the Pareto parameter is denoted by $\theta_s = \theta$.

The second sector is much simpler and will consist of purely nontraded consumer services (“haircuts”) which are produced with labor and which neither use nor are used as intermediate inputs. In other words, this residual sector has no backward or forward linkages. This second sector plays a role mainly on the demand side where it has a consumption expenditure share of

$1 - \alpha$, while the first sector has an expenditure share of α . For convenience, we assume that this second service sector is perfectly competitive and that, without loss of generality, its productivity level is unity so that the price of a unit of the service equals the wage w_i .

The condition (18) applies to the first sector only, and for clarity we drop the summation over sectors s in (18); in fact, we can drop the sector subscript altogether. We let $\tilde{\gamma} \equiv \tilde{\gamma}_{i,11} = \gamma \left(\frac{\sigma-1}{\sigma} \right)$ denote the single nonzero term in the input-output matrix for the first sector in both countries, with $0 < \gamma < 1$. Finally, we normalize the wage in the home country H as unity, $w_H \equiv 1$. The labor force in both countries is of the same size L , and the foreign wage w_F will be determined endogenously. We assume that there are iceberg costs $\tau > 1$.

For simplicity, we start with a *zero tariff* on the traded intermediate imports in both countries, $t = 0$, which we refer to the *symmetric free trade equilibrium* (SFTE). In this situation, the iceberg costs $\tau > 1$ ensure that $\lambda_{HH} = \lambda_{FF} > 0.5$. We then allow that the home country applies a small change of tariff dt . In this setting, the change in home welfare is,

$$\frac{dU_H}{U_H} = -\alpha \frac{dP_H}{P_H} + \frac{dT_H}{L + T_H}, \quad (23)$$

where P_H is the price index for the differentiated good that uses the traded inputs. The change in this price index can be rewritten using (22) as

$$\frac{dP_H}{P_H} = \frac{1}{(1 - \gamma)\theta} \left[\frac{d\lambda_{HH}}{\lambda_{HH}} - \frac{dN_H}{N_H} - (\kappa - 1) \frac{dY_H}{Y_H} \right], \text{ with } \kappa \equiv \frac{\theta}{\sigma - 1} > 1. \quad (24)$$

Here we see that any reduction in entry or in the output of the differentiated sector raises its price index, and therefore lowers welfare in (23) unless there is some offsetting change in tariff revenue. To explain this result, recall that the equilibrium of a one-sector Melitz-Chaney model is socially optimal (Dhingra and Morrow 2019). In a two sector model, by contrast, we expect that the competitive service sector means that too few resources are devoted to the differentiated sector and that entry there is sub-optimal. This creates a domestic distortion that is exacerbated by any reduction in entry or output of the differentiated sector. The question we need to address is whether protecting the sector with an import tariff will lead to such a reduction in entry or output. While that outcome may sound counter-intuitive, recall that by Lerner symmetry, an import tariff will be equivalent to an export tax. We would not be so surprised if an export tax reduces entry and/or output in the differentiated sector, and that is what we explore next.

Output and Entry Consider next the goods market clearing conditions from (18). With both countries having the same labor force of size L , and the home country H imposing an *ad valorem* tariff of t on its imports of the differentiated intermediate inputs, we obtain

$$Y_H = \tilde{\gamma} (\lambda_{HH} Y_H + \lambda_{HF} Y_F) + \alpha (L + T_H) \quad (25)$$

and

$$Y_F = \tilde{\gamma} \left(\lambda_{FF} Y_F + \frac{\lambda_{FH}}{1+t} Y_H \right) + \alpha w_F L, \quad (26)$$

with home tariff revenue

$$T_H = \frac{t}{1+t} \lambda_{FH} Y_H. \quad (27)$$

The trade balance condition from (17) becomes

$$\frac{\lambda_{FH}}{1+t} Y_H = \lambda_{HF} Y_F. \quad (28)$$

Finally, the free entry conditions are from (21) with $E_{ij,s} \equiv \frac{\lambda_{ij,s}}{1+t_{ij,s}} Y_{j,s}$, leading to

$$N_H = \frac{\lambda_{HH} Y_H + \lambda_{HF} Y_F}{f^E \theta \sigma / (\sigma - 1)}, \quad (29)$$

$$N_F = \frac{\lambda_{FF} Y_F + \frac{\lambda_{FH}}{1+t} Y_H}{w_F f^E \theta \sigma / (\sigma - 1)}, \quad (30)$$

where recall that we have normalized the home wage at unity, $w_H \equiv 1$, and the tariff only applies to the home country imports of foreign intermediate inputs.

We now differentiate these conditions and evaluate them at the initial SFTE. In the symmetric equilibrium we have that $\lambda_{HH} = \lambda_{FF} \equiv \lambda$, and that $\lambda_{HF} = \lambda_{FH} \equiv 1 - \lambda$. While the shares are changing with the tariff in the above equations, when evaluated at $t = 0$ these changes all conveniently cancel out, because $\lambda_{ii} + \lambda_{ji} = 1 \Leftrightarrow d\lambda_{ii} + d\lambda_{ji} = 0$, for $j \neq i$. Then, for a small change in the home tariff dt , from (25) using (27) and (28), we obtain, with $t = 0$ in the SFTE,

$$\frac{dY_H}{Y_H} = \Delta (1 - \lambda) dt, \quad \text{with } \Delta \equiv \frac{\alpha - \tilde{\gamma}}{1 - \tilde{\gamma}} \leq 1. \quad (31)$$

Similarly, using (26) and (28), we obtain

$$\frac{dY_F}{Y_F} = \frac{dw_F}{w_F}. \quad (32)$$

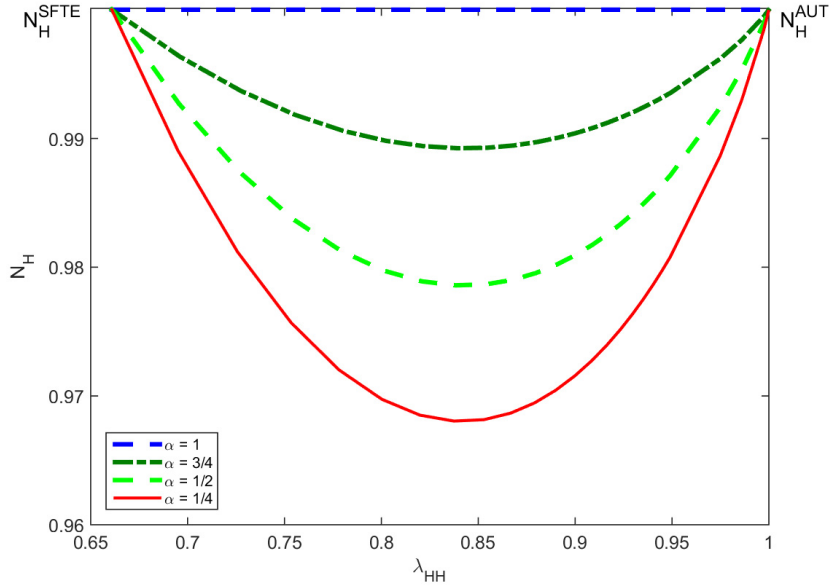
Changes in entry are obtained in much the same way. From (29) and (30), using (28), we have

$$\frac{dN_H}{N_H} = (\Delta - 1) (1 - \lambda) dt, \quad (33)$$

$$\frac{dN_F}{N_F} = 0. \quad (34)$$

From expression (31), we see that the value of output in the differentiated sector falls if and only if $\Delta < 0$, meaning that $\alpha < \tilde{\gamma}$. We see from (33) that entry falls due to a rise in the tariff if and only if $\alpha < 1$ so that $\Delta < 1$, meaning that the second sector exists to absorb some of the redistributed tariff revenue. Without the second sector, however, the tariff applied to the revenue

Figure 1: Entry effects of tariff changes in the two-sector model



Note: This figure shows how the level of firm entry N_H and the domestic share $\lambda = \lambda_{HH}$ vary as the tariff t changes, for different values of the traded sector share $\alpha \in \{1, 0.75, 0.5, 0.25\}$. For each of these four cases, tariffs vary in the range $t \in (0, \infty)$, i.e., from the symmetric free trade equilibrium (SFTE) to autarky (AUT). Iceberg costs are set at $\tau = 1.1$, which creates a small home bias even under free trade, with $\lambda \approx 0.66$. The other model parameters are $\gamma = 0, \sigma = 2, \theta = 4, f_D = f_{ii} = 1, f_X = f_{ij} = 1.1$, and $f_i^E = 1$. See text.

cost of imports does not affect entry (though it still affects sectoral output).

We have shown that entry falls for a slight increase in the tariff from the SFTE. What about for a large increase in the tariff? As $t \rightarrow \infty$, then trade is eliminated and we are in the autarky equilibrium for both countries, which is again symmetric, so that we can treat $w_F = w_H$ as unity. The conditions (29) or (30) will give the same level of entry as in the SFTE, because output in the differentiated sector becomes once again $Y_H = Y_F = \alpha L / (1 - \tilde{\gamma})$, from (18). So entry is back at the same level as in the SFTE. We can summarize these results with the following theorem (where part (c) is proved in Appendix C):

Theorem 1 *The mass of entering firms N_i is the same under free trade and prohibitive tariffs. If and only if $\alpha < 1$, then: (a) near the free trade equilibrium reducing the tariff will increase entry; (b) near the prohibitive tariff, reducing the tariff will decrease entry; (c) entry is lower at all intermediate tariff levels than under free trade or prohibitive tariffs.*

To go a little further, we can turn to numerical simulations of the model to see more clearly how entry is affected by tariffs in different configurations of the model. Figure 1 shows how the level of firm entry N_H and the domestic share λ_{HH} varies as the tariff level t changes over the range from free trade to autarky, for different values of the traded sector share α .

Entry is the same under free trade and autarky. Entry is also constant when the nontraded sector is absent and $\alpha = 1$. Otherwise, starting from free trade, entry falls as tariffs increase, before then rising again in a U-shape after some point as tariffs approach infinity. The U-shape is more pronounced as the nontraded sector grows in size (i.e., as α falls further below 1). Theorem 1 shows that this U-shape holds in general for changes in the home tariff, i.e., that the graph of entry has a single local minimum.

Home Welfare The reduction in entry that we have found for a small increase in tariffs, assuming that $\alpha < 1$, necessarily reduces welfare in (23), but this effect is potentially offset by any increase in output Y_H and also by any increase in tariff revenue rebated. Evaluated at the SFTE, the increase in tariff revenue can be calculated from (27) as $dT_H = dt(1-\lambda)Y_H = dt(1-\lambda)\alpha L(1-\tilde{\gamma})$. Substituting this expression along with (31) and (33) into (24) and (23), we obtain,

$$\left. \frac{dU_H}{U_H} \right|_{t=0} = - \underbrace{\frac{\alpha}{(1-\gamma)\theta} \frac{d\lambda_{HH}}{\lambda_{HH}}}_{\text{trade volume}} + \underbrace{\frac{\alpha(1-\lambda)}{(1-\gamma)\theta} (\kappa\Delta - 1) dt}_{\text{entry+selection}} + \underbrace{\frac{\alpha(1-\lambda)}{(1-\tilde{\gamma})} dt}_{\text{tariff rebate}}. \quad (35)$$

The first term on the right of (35) is the effect of changes in trade volume (which is a sufficient statistic for welfare in ACR only for the case of changes in iceberg trade costs and a single sector). Beyond this, the second and third terms reflect changes in the entry and selection margins of the differentiated sector and in the tariff revenue rebate, respectively.

Looking at (35), if we are in the case where $d \ln U_H > -\frac{\alpha}{(1-\gamma)\theta} d \ln \lambda_{HH}$, so that the positive impact of the tariff rebate term overwhelms any negative impact of reduced entry, then we get the seemingly normal result that welfare with tariffs exceeds that with iceberg transport costs, for a given change in trade volume (i.e., the first term in (35)). But this isn't guaranteed: if, on the other hand, we are in the case where $d \ln U_H < -\frac{\alpha}{(1-\gamma)\theta} d \ln \lambda_{HH}$, then we get a seemingly paradoxical outcome that, for a given change of trade volume, the welfare effect of a tariff—*with rebate*—ends up being worse than iceberg costs.

To see whether these different cases can arise, recall that $\Delta < 1$ and that $\kappa \equiv \theta/(\sigma - 1) > 1$. It follows that the coefficient $(\kappa\Delta - 1)$ on the entry+selection term in (35) can take on either a positive or negative sign. If the term is negative, then any increase in entry+selection that accompanies a tariff reduction will *further reduce* the price index in (24) and will *further increase* the resulting welfare gains. The magnitude of this welfare gain is sensitive to the value of γ , which indicates the extent to which the differentiated products are used as intermediate inputs: as γ is larger, just as the gains via trade volumes $(-\frac{\alpha}{(1-\gamma)\theta} d \ln \lambda_{HH})$ get larger, so too do the gains from entry correspondingly increase.

The welfare impact of a change in the tariff also depends on the change in tariff revenue, the final term on the right of (35). Notice that a reduction in the tariff directly lowers tariff revenue in the final term, and this effect is stronger as $\tilde{\gamma} \equiv \gamma \left(\frac{\sigma-1}{\sigma} \right)$ is larger. In other words, just as increased

linkages magnify the the welfare gain from increased trade volume and entry in (35), so too the increased linkages would lead to an offsetting fall in tariff revenue.

If the magnitude of the second term in (35) is large enough so that it overwhelms the third term (so the two combined terms change sign) then we will obtain the aforementioned odd outcome where $d \ln U_H < -\frac{\alpha}{(1-\gamma)\theta} d \ln \lambda_{HH}$, so that an increase in the tariff is worse than an increase in iceberg costs. This condition holds if and only if $[(\kappa\Delta - 1)/(1 - \gamma)\theta] + 1/(1 - \tilde{\gamma}) < 0$. Simplifying this condition, we obtain the following result that holds in a neighborhood of the SFTE.

Theorem 2 (a) *Starting from free trade, a small increase in the tariff dt in country H is worse than a small increase in iceberg transport costs, where both lead to the same change in λ_{HH} , if $d \ln U_H < -\frac{\alpha}{(1-\gamma)\theta} d \ln \lambda_{HH}$. (b) A necessary and sufficient condition for this result to occur is that $[(\kappa\Delta - 1)/(1 - \gamma)\theta] + 1/(1 - \tilde{\gamma}) < 0$, or equivalently:*

$$\gamma > 1 - \left[\frac{\sigma(1 - \alpha) + \kappa^{-1} - 1}{(\sigma - 1)(\sigma + 1 - \kappa^{-1})} \right]. \quad (36)$$

(c) *Condition (36) can hold only if $\gamma > 0$ (production linkages are present) or $\alpha < 1$ (the service sector is present).*

Part (a) is obtained because even in the two-sector model that we are considering, with the service sector nontraded, a change in iceberg trade costs has no effect on entry and the change in welfare is $d \ln U_H < -\frac{\alpha}{(1-\gamma)\theta} d \ln \lambda_{HH}$, just like the one-sector finding in ACR. That result is shown in Appendix A. Part (b) then follows immediately from the decomposition of welfare in (35), with condition (36) obtained from simple algebra as shown in Appendix C, where part (c) is also established. Condition (36) gives us the necessary and sufficient condition for a small increase in the tariff to be worse than an increase in iceberg transport costs. For example, with $\alpha = 0.5$ and $\theta = \sigma = 3$, then (36) becomes $\gamma > 0.825$. Experimenting with other parameter values, we get a very clear sense that the role of intermediate inputs must be substantial in order for the increased entry due to a tariff cut to result in welfare gains larger than $-\frac{\alpha}{(1-\gamma)\theta} d \ln \lambda_{HH}$, so the tariff increase is worse than iceberg costs.

Theorem 2 is surprising because it shows that literally throwing the iceberg trade costs into the ocean can be preferable (for the same change in λ_{HH}) to redistributing these resources to consumers. Why is this counterintuitive result obtained? A clue is provided by the finding that entry into the differentiated sector remains fixed even when iceberg transport costs are changed, as shown in the one-sector model in ACR, and also true in the two-sector model considered here (because the service sector is nontraded). The iceberg trade costs reduce demand for the differentiated good by increasing its export price, but increase demand because that good is itself used as the shipping service (i.e. when the good melts in transit). These effects just cancel in their impact on entry, so that entry into the differentiated sector remains unchanged.

But with tariffs applied instead to the differentiated sector, the result is different. The tariff

revenues are redistributed to consumers, who then increase their demand for both the differentiated sector and the nontraded service sector. That increase in demand for the nontraded good is pulling demand *away* from the differentiated sector (as compared to the case of iceberg trade costs), and as a result, entry into that sector falls as shown in Figure 1. As we have already noted, in the presence of a competitive, nontraded sector we expect that entry into the differentiated sector is below the optimal level, so a further reduction due to the tariff increase lowers welfare as compared to the case of iceberg trade costs.

When an increase in the tariff is worse than an increase in trade costs, then it appears that the tariff could lower welfare, meaning that the optimal tariff is actually *negative*. Since $d \ln U_H < -\frac{\alpha}{(1-\gamma)\theta} d \ln \lambda_{HH}$ when (36) holds, home utility falls due to a tariff $dt > 0$ if the home share rises, $d \ln \lambda_{HH} > 0$. Condition (36) is neither necessary nor sufficient to reverse the conventional (positive) optimal-tariff argument, however. Even when it does not hold, so that the second and third terms on the right of (35) are positive for an increase in the tariff, welfare can still fall if they are overwhelmed by the first term, that is, if the home share indeed rises *enough* with the tariff. Conversely, when (36) holds then we still need an extra condition to ensure that the entire expression (35) is negative.

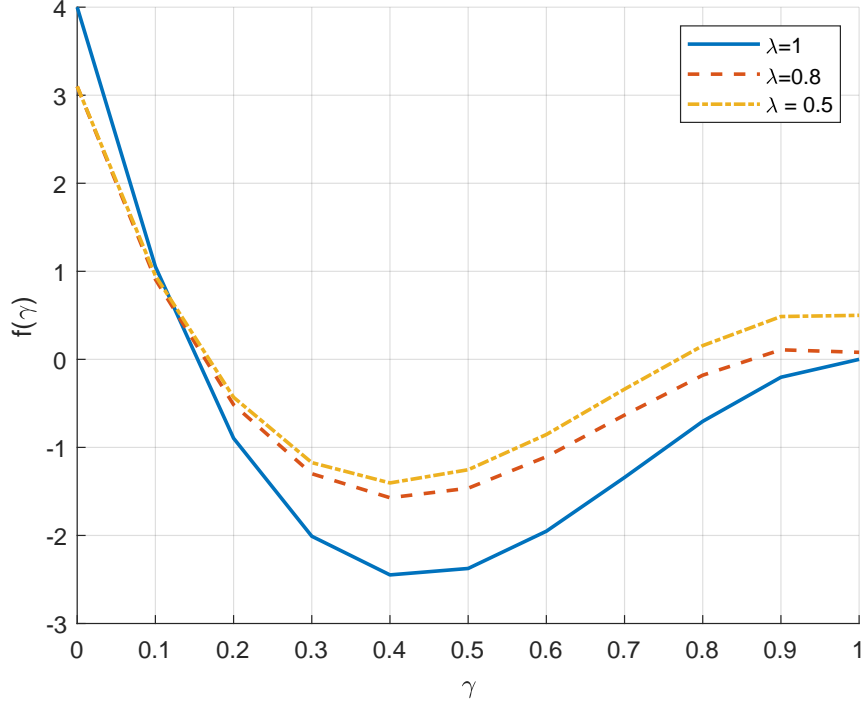
To evaluate whether the optimal tariff is negative, we now need to solve for the change in home welfare while incorporating the change the home share $d \ln \lambda_{HH}$, as we do in Appendix D. The change in the home share will depend on many factors, one of which is the terms-of-trade gain for the home country based on the fall in foreign wages w_F . Because the resulting expressions are complex, we focus here on a condition additional to that in Theorem 2 that will ensure a negative optimal tariff.

Theorem 3 *A small increase in the tariff dt in country H starting from free trade will reduce welfare if (36) holds and also a polynomial denoted by $f(\gamma)$ is non-negative. Provided that $0.5 \leq \lambda < 1$ and $\theta \geq (1 - \alpha)$, then $f(\gamma) \geq 0$ for sufficiently high and sufficiently low values of $\gamma \in [0, 1]$. But $f(\gamma) < 0$ for some intermediate values $0 < \gamma^* < 1$ when λ is close to unity.*

In Figure 2, we plot $f(\gamma)$ for three cases: $\lambda = 1$, $\lambda = 0.8$, and $\lambda = 0.5$, given the parameter values $\theta = 3$, $\sigma = 2.5$, and $\alpha = 0.5$. When $\lambda = 1$ so that the countries are in autarky, then the polynomial $f(\gamma)$ is a cubic, and it has the shape displayed in Figure 2: $f(1) = 0$, then $f(\gamma)$ falls below 0 for slightly lower values of γ , but become positive for very low values of γ because we know that $f(0) > 0$. Now lowering λ below unity so that the countries are engaged in trade, then $f(1) > 0$ as illustrated for the curves for $\lambda = 0.8$ and $\lambda = 0.5$, while $f(0)$ also remains positive but it is lower than for $\lambda = 1$. In other words, the curve rotates in a counter-clockwise direction as illustrated in Figure 2. For $\lambda < 1$ the curve $f(\gamma)$ is no longer a cubic but becomes a higher-order polynomial; nevertheless, it retains the basic shape of a cubic as shown in Figure 2, with the properties as summarized in Theorem 3.

Theorem 3 suggests that a negative optimal tariff can occur for both high and low values of γ .

Figure 2: Condition for negative optimal tariff



Note: This figure plots polynomial $f(\gamma)$ for three values of λ : 1, 0.8, and 0.6. For each of these three values of λ , the following values of model parameters were used: $\sigma = 2.5$, $\theta = 3$, $\kappa = 2$, and $\alpha = 0.5$.

But we have not yet established that outcome for low values of γ , because in that case, condition (36) might fail to hold. To explore this case more carefully, we consider the case where input-output linkages are absent so that $\gamma = 0$. To find whether the optimal tariff can still be negative, we focus on high trade costs τ so that both countries are nearly in autarky, with λ close to unity. It turns out that all the terms in (35) are proportional to $(1 - \lambda)$ so they are close to zero in that case. To determine the sign of (35) near to autarky, we divide it by $(1 - \lambda)$ and take the limit as $\lambda \rightarrow 1$, obtaining the result in part (a) of the next Theorem.

Theorem 4 Consider an economy near an SFTE with zero tariffs initially, but with $\tau > 1$. Then for small increases in the home tariff $dt > 0$, the welfare change is:

(a) For $\gamma = 0$ (no linkages):

$$\lim_{\lambda \rightarrow 1} \frac{1}{(1 - \lambda)} \frac{d \ln U_H}{dt} \Big|_{\gamma=t=0} = \frac{\alpha}{\theta} \left[\alpha \kappa - \frac{(\kappa + \theta)^2}{2(\kappa + \theta) - 1} \right] + \underbrace{\alpha}_{\text{revenue effect}}, \quad (37)$$

which is negative for $0 < \alpha < \frac{\kappa - (\theta - 1)(\sigma - 1)}{2(\kappa + \theta) - 1} < 0.5$. It follows that the optimal home tariff is negative.

(b) For $\gamma \rightarrow 1$ (strong linkages):

$$\lim_{\gamma \rightarrow 1} (1 - \gamma) \frac{d \ln U_H}{dt} \Big|_{t=0} = -\frac{\alpha(1 - \lambda)}{2\theta} [\kappa\sigma(1 - \alpha) + \theta] + \underbrace{0}_{\text{vanishing revenue effect}}, \quad (38)$$

which is negative for all $0.5 < \lambda < 1$ and $0 < \alpha \leq 1$. It follows again that the optimal home tariff is negative.

To interpret part (a), the first terms appearing on the right of (37), before the revenue effect, equal the sum of the first two terms on the right of (36) after dividing $(1 - \lambda)$. If these first terms on the right are negative and greater in absolute value than the revenue effect, then the optimal tariff is negative. The condition to ensure this is stated in part (a), and because $\kappa \equiv \theta/(\sigma - 1) > 1$, that condition can be satisfied only for low enough values of σ .¹⁵ In that case, welfare declines with a slight increase in the tariff, and hence the optimal tariff is negative.

In part (b) we consider the alternative case of very strong production linkages, so that $\gamma \rightarrow 1$. In that case the model is not well-behaved, with the price elasticity $d \ln P_H/dt$ approaching infinity.¹⁶ To obtain a bounded expression for welfare we consider the limit of $(1 - \gamma) d \ln U_H/dt$. The first terms appearing on the right of (38) again equal the sum of the first two terms on the right of (36). It turns out that the revenue effect in (36) is bounded as $\gamma \rightarrow 1$, so when multiplying by $(1 - \gamma)$ that term become vanishingly small. It follows that in this case we obtain a welfare loss due to a small tariff, so once again, the optimal tariff is negative.

It is especially surprising that we obtain a welfare decline when $\gamma \rightarrow 1$ and $\alpha = 1$ in part (b), since in that case the tariff has no impact on entry. To explain this result, the tariff still creates a distortion if $d \ln \lambda_{HH}/dt > 0$, so that the first term in (35) is negative for $dt > 0$. The coefficient $\alpha/\theta(1 - \gamma)$ on that trade volume term approaches infinity as $\gamma \rightarrow 1$, but the coefficient $\alpha(1 - \lambda)/(1 - \tilde{\gamma})$ on the tariff rebate term remains bounded since $\tilde{\gamma} = \gamma(\sigma - 1)/\sigma < 1$, which explain the negative optimal tariff.¹⁷ We can check the sign of $d \ln \lambda_{HH}/dt$ with the following result.

¹⁵In order for a nonempty range of α to satisfy the condition in part (a) just below (37), we must have that $\kappa - (\theta - 1)(\sigma - 1) > 0$. Using $\theta > \sigma - 1$, this condition can be satisfied only if $\sigma < 2.62$.

¹⁶Melitz and Redding (2014) likewise find that the gains from trade approach infinity as the production linkages become very strong.

¹⁷These findings are not just a peculiarity of having the fixed costs in our model paid in labor, however. We have found that similar results continue to hold even in other specifications for the fixed costs, with a negative optimal tariff for high values of γ . We have assumed that fixed costs are paid entirely in terms of labor and do not use any materials, which indirectly use imported inputs. In the alternative case where the fixed costs are paid in terms of the same input bundle as variable costs, then the coefficient $\tilde{\gamma}$ in the goods equilibrium condition would instead be γ , as discussed in footnote 12. In that case, the coefficient on the tariff revenue term in (35) would be $\alpha(1 - \lambda)/(1 - \gamma)$, which approaches infinity as $\gamma \rightarrow 1$. With this alternative specification of fixed costs, however, we find that the efficiency loss of the tariff is also higher, because the tariff has a *direct* impact on raising fixed costs and reducing entry. It turns out that the efficiency cost of the tariff approach infinity as $\gamma \rightarrow \theta/(\theta + \kappa) < 1$, in which case the tariff revenue gain is still bounded. So once again, under this alternative specification, we find that the efficiency cost of the tariff dominates its revenue gain when production linkages become strong enough.

Corollary 5 *The change in the home share as the tariff increases from SFTE is:*

(a) *For $\gamma = 0$ (no linkages):*

$$\lim_{\lambda \rightarrow 1} \frac{1}{(1-\lambda)} \frac{d \ln \lambda_{HH}}{dt} > 0. \quad (39)$$

(b) *For $\gamma \rightarrow 1$ (strong linkages): If $\Delta \geq 0$ then,*

$$\lim_{\gamma \rightarrow 1} \frac{d \ln \lambda_{HH}}{dt} > 0. \quad (40)$$

When there are no linkages in part (a), the home share always increases due to the tariff. When the sectoral linkages are strong in part (b), then the home share also increases provided that $\Delta \geq 0$. In that case, the value of output of the differentiated sector Y_H (weakly) rises due to the home tariff in (31), so it takes the rise in the home share $d \ln \lambda_{HH}/dt > 0$ to create the fall in utility in (35), resulting in the negative optimal tariff.

Our new results deviate from conventional views. The findings are significant in that, when welfare falls for small tariffs, then *both countries can be expected to gain from a reduction in tariffs in either country*. In this setting, trade agreements are not necessary for mutual gains. To explain this result, recall that from Lerner symmetry, the import tariff in each country is acting like an export tax which can be expected to inhibit entry. To offset this distortion, either country would prefer to reduce tariffs and encourage entry into the differentiated sector. The gain for the country reducing its tariff is indicated by the sufficient conditions given in Theorem 3, and the gain for the other country follows because it will experience a rise in its relative wage. In this scenario, the *mutual gains* from tariff reductions are quite different from what is predicted by competitive models, or even monopolistically competitive models in the absence of production linkages.

Are these new results empirically relevant? To find out, we evaluate whether these results will hold in a more realistic setting than our two-country, two-sector model, using our multi-country, multi-sector quantitative model. There are several important differences between the quantitative model and our simple illustrative model in this section. Most important, in the quantitative model we do not treat the services sector as having no production linkages with the rest of the economy, or as being perfectly competitive: those assumptions were made here just for convenience. Rather, we will allow the services sector to be composed of heterogeneous firms operating under monopolistic competition, as explained before—which, all else equal, by placing a domestic distortion in the nontraded sector as well as in the traded sector, might be expected to bias against a finding of negative optimal tariffs.

4 Data Description

In order to quantify the effects of actual, and counterfactual, tariff changes we need detailed information on tariffs, as well as on production and trade flows for a large set of countries. Moreover, we are interested in understanding how both high- and low-income countries have been impacted by changes in trade policy, and this can only be done if the data have good coverage of both sets of countries. We start this section by first describing the sources and the way we obtain tariff data, and we then on move to explain the sources for production and trade flow data.

4.1 New Tariff Data

We build a new comprehensive, disaggregated, annual tariff dataset from the early 1980s onwards. We obtain tariff schedules from five primary sources: (1) raw tariff schedules from the TRAINS and IDB databases accessed via the World Bank’s WITS website as far back as 1988 for some countries; (2) manually collected tariff schedules published by the International Customs Tariffs Bureau (BITD), some dating back as far as the 1950s;¹⁸ (3) U.S. tariff schedules from the U.S. International Trade Commission from 1989 onwards (Feenstra, Romalis, and Schott 2002); (4) U.S. tariff schedules derived from detailed U.S. tariff revenue and trade data from 1974 to 1988 maintained by the Center for International Data at UC Davis; and (5) the texts of preferential trade agreements primarily sourced from the WTO’s website, the World Bank’s Global Preferential Trade Agreements Database, or the Tuck Center for International Business Trade Agreements Database.

For the U.S., specific tariffs have been converted into *ad valorem* tariffs by dividing by the average unit value of matching imported products. Due to the difficulties of extracting specific tariff information for other countries and matching it to appropriate unit values, only the *ad valorem* component of their tariffs are used. The vast majority of tariffs are *ad valorem*. Switzerland is a key exception here, with tariffs being specific. For Swiss tariffs we use the *ad valorem* equivalent tariff calculations from the TRAINS database accessed on the World Bank’s WITS website for 1990, 1993 and each year from 1995. We aggregate MFN and each non-MFN tariff program to the 4-digit SITC Revision 2 level by taking the simple average of tariff lines within each SITC code.¹⁹

One problem is that tariff schedules are often not available in each year, especially for smaller countries. Updated schedules are more likely to be available after significant tariff changes. Rather than replacing “missing” MFN tariffs by linearly interpolating observations, missing observations are set equal to the nearest preceding observation. If there is no preceding observation, missing MFN tariffs are set equal to the nearest observation. Missing non-MFN tariff data (other than punitive tariffs applied in a handful of bilateral relationships) are more difficult to construct for two reasons: (i) they are often not published in a given tariff schedule; and (ii) preferential trade agreements have often been phased in. To address this we researched the text of over 100 regional

¹⁸Most tariff schedules can be fairly readily matched to the SITC classification.

¹⁹Multiple preferential tariffs may be applicable for trade in a particular product between two countries. Since the most favorable one may change over time, we keep track of each potentially applicable tariff program.

trade agreements and Generalized System of Preferences (GSP) programs to ascertain the start date of each agreement or program and how the typical tariff preference was phased in. To simplify our construction of missing preferential tariffs we express observed preferential tariffs as a fraction of the applicable MFN tariff. We fill in missing values of this fraction based on information on how the tariff preferences were phased in. Preferential tariffs are then constructed as the product of this fraction and the MFN tariff. We keep the most favorable potentially applicable preferential tariff. Punitive non-MFN tariff levels tend not to change over time (though the countries they apply to do change). We replace missing observations in the same way we replace missing MFN tariff observations.

An overview of our new tariff data is shown in Figures 3 to 7. The data show, with country coverage and disaggregated detail of a kind not seen before, the remarkable impacts of the Uruguay Round on the levels and dispersion of tariffs around the world from the 1980s to the 2010s.

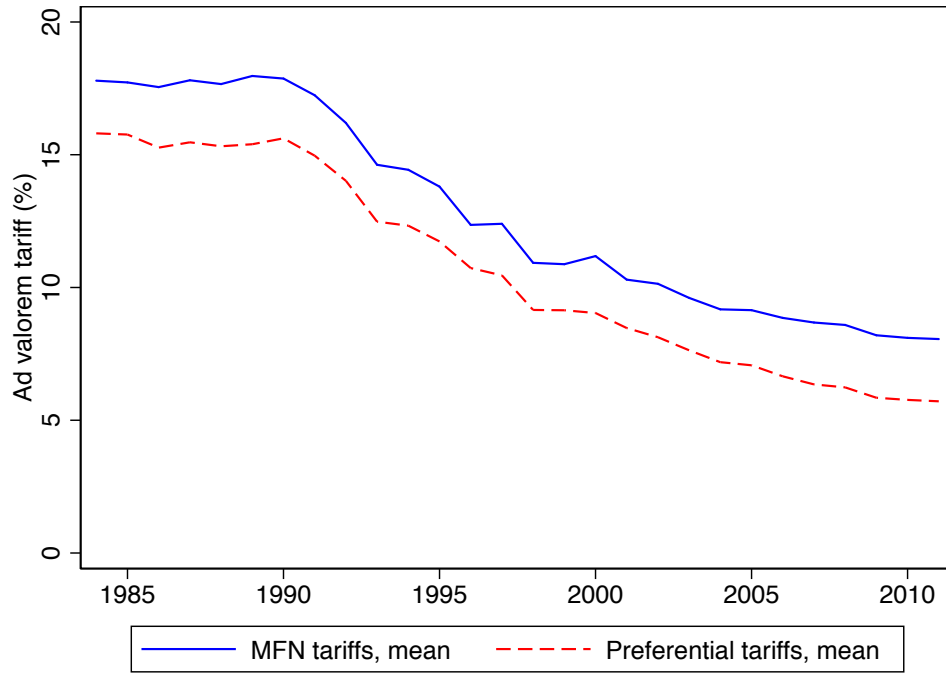
To start, Figure 3 plots the average (mean) *ad valorem* tariff rates, both MFN and Preferential, across all countries and all goods at the SITC 4-digit goods level, in each year from 1984 to 2011, for the full sample, the Advanced economies, and the Emerging and Developing economies. At the start of the period shown, in the 1980s, the typical sample size for the calculations of these statistics is about 1 million distinct tariff lines. By the late 2000s, at the end of the period shown, the sample size in a given year is well over 2 million distinct tariff lines. It is clear that both types of tariffs fell over the period, by about 9 percentage points, with essentially all of the reductions concentrated after 1990.²⁰

Given the similar trends, we focus henceforth on MFN tariffs in this section. Figure 4 plots the median MFN *ad valorem* tariff rate across all goods at the SITC 4-digit level, in each year, for the full sample, the Advanced economies and the Emerging and Developing economies. It also plots a fan showing seven percentiles from 5th, 10th, 25th, ...up to the 95th in each year to give an idea of the dispersion of tariff rates. The median is shown by the solid red line. This figure shows very clearly that the Uruguay Round was followed by a dramatic reduction in both the levels and dispersion of tariff rates, with these trends being particularly concentrated in the subsample of Emerging and Developing economies. In part this reflects the fact that these countries started with higher levels and dispersion to begin with, and so had more scope for these kinds of policy adjustments. In contrast, the Advanced countries had made much greater progress in this direction during earlier GATT rounds going back to the 1940s.

Figure 5 uses histograms and kernel density plots to show the distributions of *ad valorem* tariff rates across countries and goods, for two snapshot years that we will use for our policy experiments: a pre-Uruguay 1990 sample year and a post-Uruguay 2010 sample year. The histograms

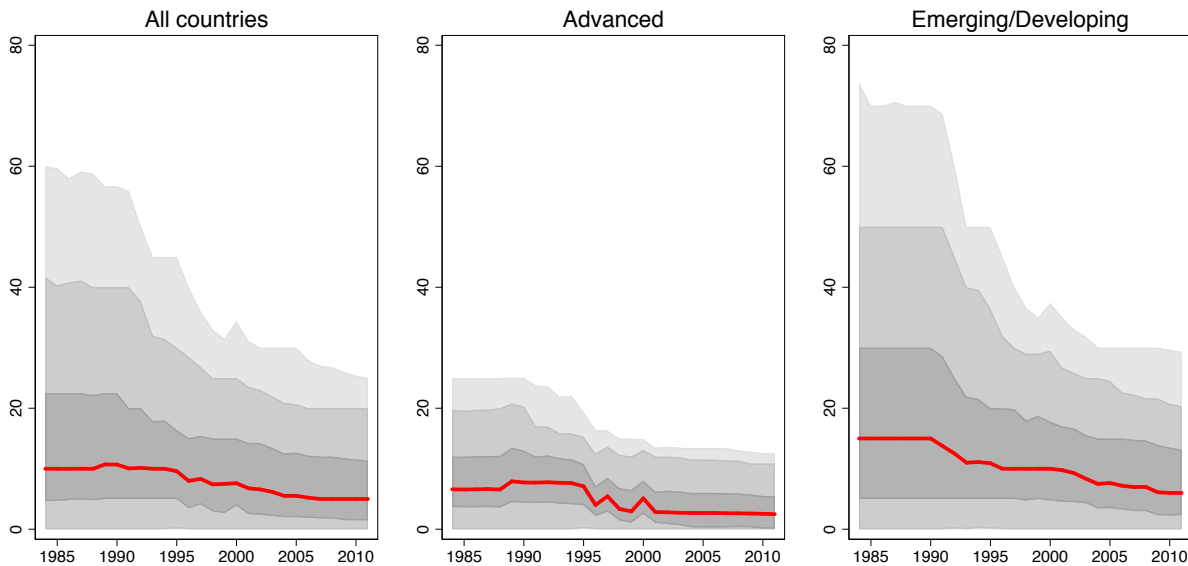
²⁰Readers may wonder why the number of tariff line observations grows in the tariff database, since the number of product categories is fixed and the number of countries only grows slightly. The key reason is that we are only summarizing tariff observations where there is a matching trade observation, and the number of country-pair observations with positive trade grows substantially. Because we are ignoring zero-trade observations that might have high tariffs, this approach may lead us to understate the decline in MFN tariffs.

Figure 3: Average MFN and Preferential *ad valorem* tariff rates



Note: Averages are taken over all 4-digit SITC level good, all countries, by year 1984–2011.

Figure 4: Distributions of MFN *ad valorem* tariff rates



Note: 4-digit SITC level data, 3 samples, by year 1984–2011 (percentiles 5/10/25/50/75/90/95). Median is red line.

Figure 5: Distributions of MFN *ad valorem* tariff (4-digit SITC, all countries, 1990 and 2010)

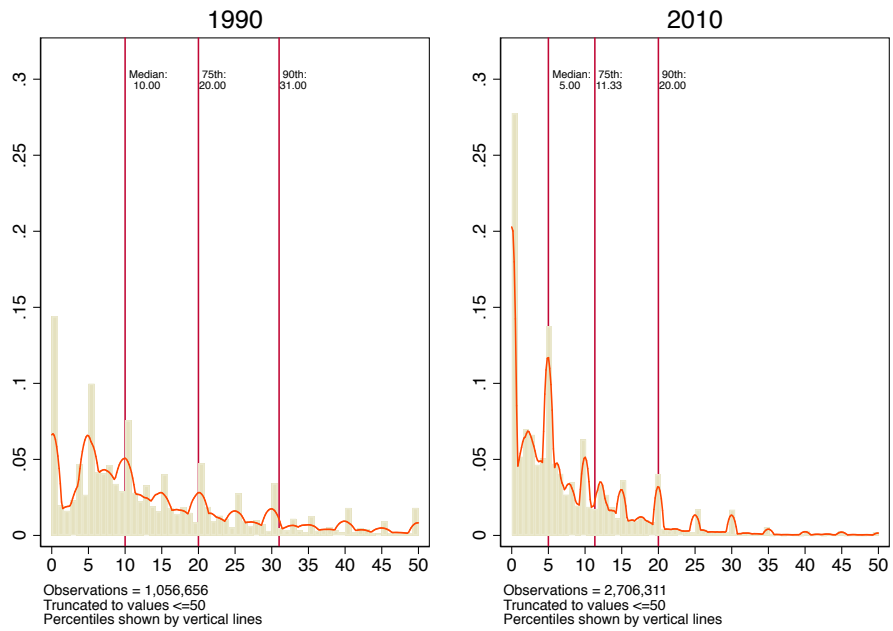


Figure 6: MFN *ad valorem* tariff rates, 10 sectors, all countries, in 1990 and 2010

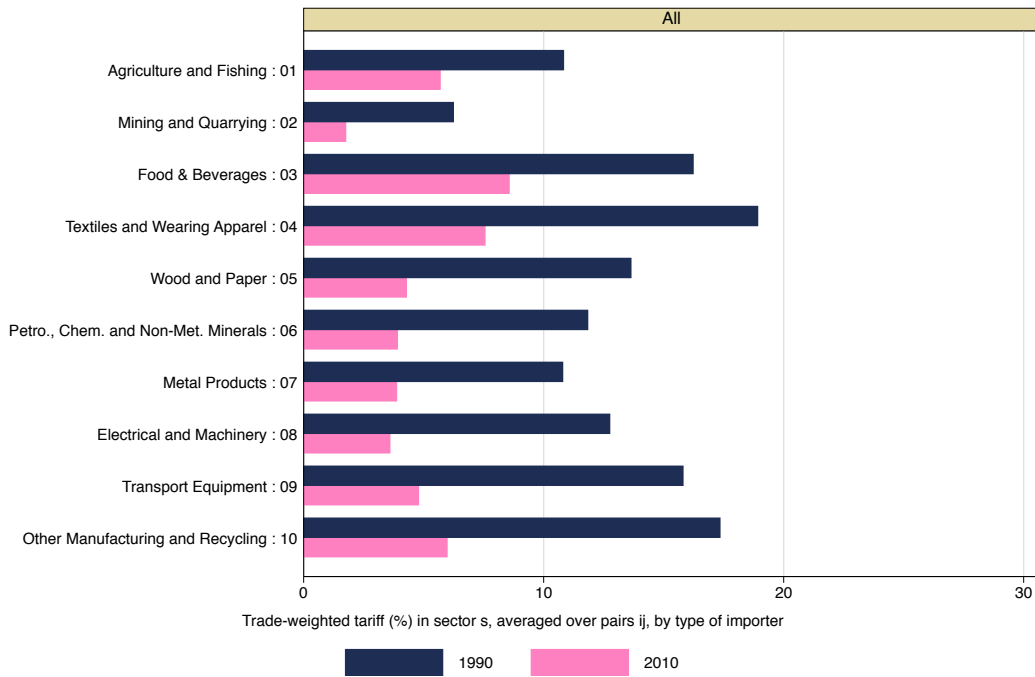
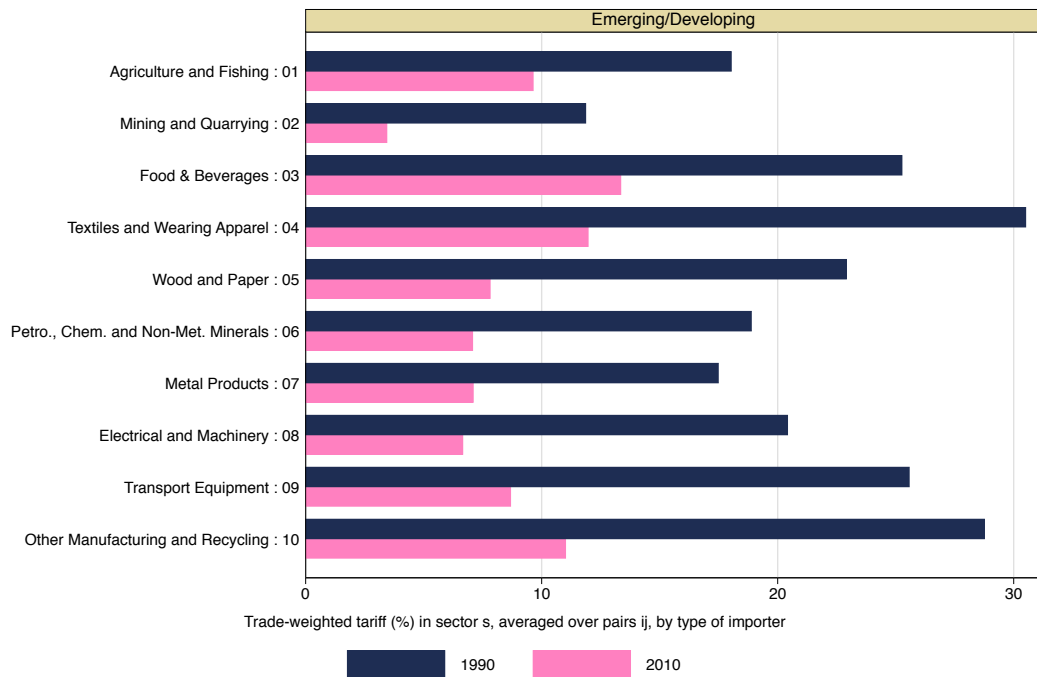
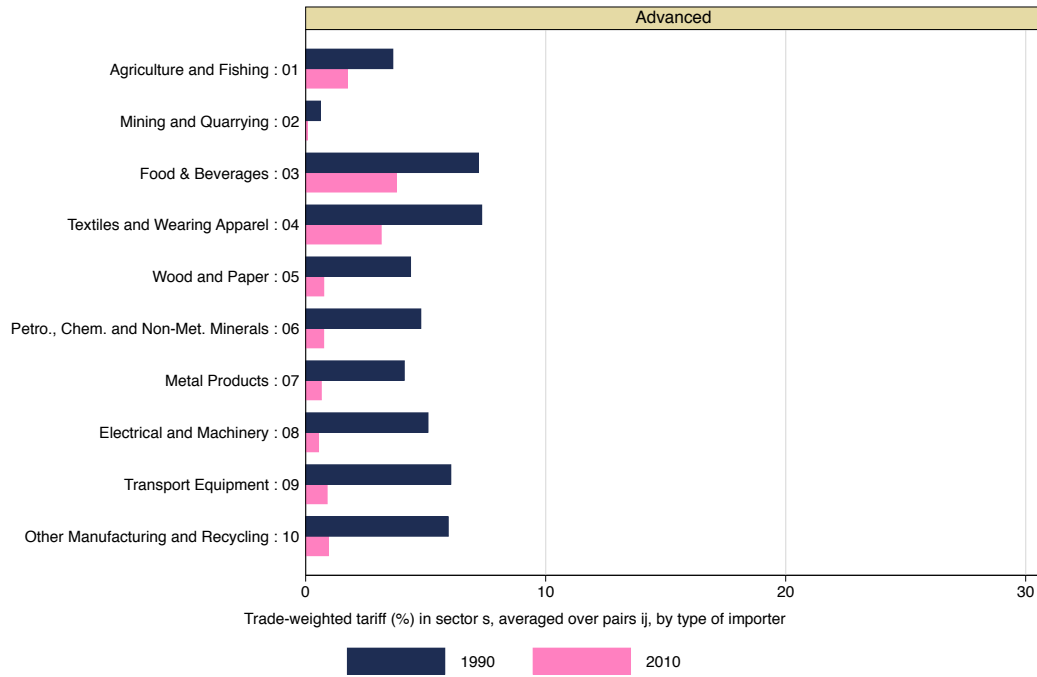


Figure 7: MFN *ad valorem* tariff rates, 10 sectors, all countries, in 1990 and 2010



are truncated at the 50% tariff level; a small number of tariffs over this level (some well over 100%) appear in both sample years for a few unusual goods and countries, but this right tail is not very representative. Within the range shown, tariff peaks at certain round numbers are clearly visible (0, 5, 10, 15, etc.), as one would expect. However, looking past those peaks, we can clearly see again the impacts of changes in tariff policy over this period. The spike at zero rises, as more zero-tariff rates appear across goods and countries, and in the strictly positive region mass is shifted from the above-20% region and into the below-20% region. In 1990, a 20% tariff line was at the 75th percentile globally; by 2010, a 20% tariff line was at the 90th percentile globally.

Finally, Figures 6 and 7 provide sectoral detail for tariffs aggregated up to the level of 10 tradable sectors which we use in our calibrated model.²¹ This figure shows clearly that the Uruguay Round did not have a peculiar compositional impact across sectors. It lowered average tariffs pretty much across the board in all sectors, and was not just confined to some limited areas of the tradable economy. And again, the figure clearly shows the much larger scope for tariff reductions in the Emerging and Developing sample, given the relatively high tariff rates they had at the start of the period in all sectors as compared to the Advanced economies.

4.2 Production and Trade Data

To obtain production and trade data, we relied on Eora MRIO, a global multi-region IO database. This dataset, to our knowledge, is the most comprehensive dataset available that contains information on production, trade flows and input-output (IO) tables for 189 countries.²² Six sources are used to construct these multi-region IO tables. The sources are: (1) input-output tables and production data from national statistical offices; (2) IO from Eurostat, IDE-JETRO, and OECD; (3) the UN National Accounts Main Aggregates Database; (4) the UN National Accounts Official Data; (5) the UN Comtrade international trade database; and (6) the UN Service Trade Statistics Database. For further information, refer to Lenzen et al. (2012; 2013). We use Eora MRIO to obtain data on value added shares, share of intermediate inputs in production, gross output, and total exports. These are mapped into our model concepts as explained in Appendix E.

A key advantage of this database, compared to others, is the fact that it contains information for a large set of countries (high- and low-income countries) and for the early years in the sample period we wish to study. In particular we can make use of the 1990 multi-region table with 25-sector harmonized classifications. As a reference point, in comparison with the World Input-Output Database (WIOD), we have more than three times the number of countries and account for a number of developing countries, some of them quite small. Moreover, there is no WIOD for the year 1990, the period immediately before the Uruguay Round tariff cuts. Having data as far back as circa 1990 allows us to take the model to the data and evaluate the effects of every single tariff reform after that period.

²¹Tariffs are aggregated using trade weights as discussed in Appendix F.

²²Please refer to <http://worldmrio.com/> for more information.

5 Taking the Quantitative Model to the Data

Several issues need to be dealt with in order to take the model to the data. First, we need to find a way to infer a large set of unobservable parameters.²³ Second, we need to deal with the fact that trade is unbalanced and that our static model cannot accommodate this feature of the data. Third, we need estimates for parameters such as the trade and the home versus foreign input elasticities.

To solve the first issue, we use the equilibrium conditions of the model in relative changes, where we use the “hat” notation for the ratio of after-versus-before levels of any variable for a given perturbation; that is, we define $\hat{z} = z'/z$ for any variable z . It was first shown by Dekle, Eaton, and Kortum (2007, 2008) that their model could be expressed conveniently using this type notation.²⁴ As we show in Appendix E, this approach allows us to condition on an observed allocation in a given baseline year and solve the model without needing estimates of fixed costs and other parameters which are not directly observable. The way we solve the second issue is by first calibrating the model with trade deficits as a residual and then use the model to net out the deficits.

Finally, solving our quantitative model requires estimates, by sector, of the elasticity of substitution across varieties σ_s , the home versus foreign input elasticity ω_s , and the Pareto shape parameter θ_s . In order to obtain estimates for the elasticity of substitution and the Pareto parameter we use the estimates from CP. CP show that by triple differencing the gravity equation one can identify the elasticities using tariff policy variation. In the context of our model the elasticity that is estimated is given by $1 - \sigma_s \theta_s / (\sigma_s - 1)$.

In order to separately identify θ_s and σ_s we rely on estimates from the literature to obtain $\theta_s / (\sigma_s - 1)$. The two most cited studies to deal with this issue are Chaney (2008) and Eaton, Kortum, and Kramarz (2011). Chaney (2008) obtains the coefficient by regressing the log of the rank of US firms according to their sales in the United States on the log of sales using Compustat data on US listed firms. Eaton, Kortum, and Kramarz (2011) use a different procedure and data on the propensity of French firms to export to multiple markets. Chaney (2008) finds that $\theta_s / (\sigma_s - 1) \approx 2$, while Eaton, Kortum, and Kramarz (2011) find $\theta_s / (\sigma_s - 1) \approx 1.5$. We take this latter estimate and apply it to our sectoral elasticities estimated using CP.

The values for the elasticities that we obtain are shown in Table 1. Note that these values imply that σ_s for the tradable sectors are 6.7, 9.7, and 4.4 respectively. These numbers are clearly within the range of values estimated by Broda and Weinstein (2006), where they find that a simple average of the elasticities of substitution are 17 at a seven-digit level of goods disaggregation (TSUSA), 7 at the three-digit level (TSUSA), 12 at a ten-digit level (HTS) and 4 at a three-digit level (HTS).

²³Several parameters from our model are directly observable, like value added shares and input-output coefficients. However, there are a large number of parameters, like fixed entry, production, and exports costs, that are not observed.

²⁴This idea was first advanced by Dekle, Eaton, and Kortum (2008) in the context of a Ricardian trade model. CP and Ossa (2014) show that one can use this method to analyze the effects of tariff policy. CR refer to this as the “exact hat algebra” and show how it works for a variety of trade models, including a multi-county, multi-industry Melitz model similar to the one we use here. We show how it works with a nested CES structure and for the case of revenue tariffs.

Table 1: Elasticities

Sector(s)	$\frac{\sigma_s \theta_s}{\sigma_s - 1} - 1$	θ_s	σ_s
Agriculture and Fishing (1 sector)	9.11	8.6	6.7
Mining and Quarrying (1 sector)	13.53	13.0	9.7
Manufacturing Sectors (all 8 sectors)	5.55	5.1	4.4
Nontraded services (all 5 sectors)	—	2.7	2.8

We also need an elasticity for the service sector. Gervais and Jensen (2013) find that services have an elasticity of substitution that is *smaller* than for manufacturing: about three-quarters the size of the elasticity in manufacturing (though they obtain rather high values for both elasticities using accounting data). Given this, we likewise adopt an elasticity of substitution in services that is below what we use for the manufacturing sector. In particular, for services we use a value of $\sigma_s = 2.8$ and, given $\theta_s / (\sigma_s - 1) = 1.5$, this implies $\theta_s = 2.7$. Finally, we also need an elasticity for home versus foreign input substitution, ω_s . We obtain this elasticity by calibrating the model to the baseline year of 1990 and then solving the model after adding the actual, observed, tariff changes. We do this for different values of ω_s , while fixing all other elasticities, and choose the value of σ_s / ω_s such that we match the actual growth rate of imports/GDP which was 35%. We find that the best fit is achieved with a value of $\omega_s = \sigma_s / 1.25$ and in all our quantitative results below we use this elasticity.

6 A Quantitative Assessment

In this section we evaluate the trade, entry, and welfare effects of the observed change in trade policy over the years 1990 to 2010. We take as our initial baseline the levels of tariffs in the year 1990, the year before tariffs started falling as a consequence of the Uruguay Round. We quantify the economic effects of tariff changes by performing four different exercises, as follows.

- We first impose on the model the actual changes in MFN tariffs from the year 1990 to the year 2010, holding fixed the preferential tariffs (PTA) in place in the year 1990. This exercise we think of as informative on the effects of changes principally due to multilateral negotiations, i.e., the Uruguay Round, so we label this case the “Uruguay Round” experiment.²⁵
- We then go beyond the Uruguay Round effects on MFN tariffs, and aim to quantify the effects from all tariff changes, MFN together with any preferential PTA tariffs in place in the year 2010. We refer to this last exercise as the “Uruguay Round + Preference” experiment.
- In addition, we explore whether there are any extra gains from tariff changes by moving to a world with zero tariffs, what we refer as the “Free Trade” experiment.
- Finally, starting from a free trade equilibrium of the world, we solve for the unilateral uniform optimal tariff across countries.

²⁵Specifically, we set the 2010 tariff equal to minimum of the 1990 preference tariff and the 2010 MFN tariff.

Trade Effects We start by showing the trade effects from the change in tariffs in our experiments. We calculate the share of total expenditure in each country on foreign goods, a model counterpart of the trade share of GDP. Figure 8 uses smooth histograms, or kernel density plots, to show the effects on the trade share of GDP in all countries in the world in the baseline and the three experiments.

The results are stark, and Uruguay Round tariff reductions generate considerable trade effects. The distribution of trade shares in 1990 had its mass concentrated in the 0%–10% region. After the Uruguay Round experiment this mass is more spread out in the 0%–20% region. There is little difference between the three experiments, suggesting that most of the impact that could have been achieved by a move towards free trade was achieved by the Uruguay Round experiment; still, the Free Trade case shows some extra trade might be generated by the removal of all tariffs.

Figure 9 shows the effects for Advanced versus Emerging and Developing countries. The world, on average, became more open with a roughly twofold increase in the median trade share in both subsamples. Interestingly, the median trade share increases slightly more for Advanced economies relative to Emerging and Developing economies. The effects for the latter are very dispersed. Some countries, like Hong Kong and Singapore, display a substantial increase, even from an initial high level, while for other countries the trade share remain almost constant.

The second takeaway from both of figures is that Uruguay Round + Preference does not generate a large increase in world trade relative to Uruguay Round only. This is clearly seen by comparing the median change in openness for Advanced and Emerging and Developing countries as we move from the Uruguay Round case to the Uruguay Round + Preference. The line is flat, as it is at almost all marked deciles. The histogram makes the same point. Finally, note that moving to zero tariffs generates considerable trade share effects for Emerging economies, but little in the way of extra trade share effects for Advanced economies. This result unmask the asymmetrical impact of further reducing tariffs for Emerging and Developing countries, where for the latter the free trade would be a larger counterfactual change

Entry Effects We now discuss our findings on firm entry. Figure 10 presents the distribution of changes in entry across all countries and sectors by trade policy relative to the 1990 baseline (normalized to 1). Concretely, we are showing the change in entry, in hat notation $\hat{N}_{i,s} \equiv N'_{i,s}/N_{i,s}$. The histogram in Figure 10 shows that the entry margin is very active and heavily impacted by the changes in tariffs.

As we can see, there is mass in both tails reflecting that in some country-sector cases entry goes up, while in others it falls. As we compare experiments it is evident that both Uruguay Round and Uruguay Round + Preference generate very similar entry effects, while moving to Free trade affects entry a little bit more, and mostly in the Emerging and Developing countries where again free trade would be a larger counterfactual change. In particular, it tends to reduce entry sharply in many cases, in part, as a consequence of increased import competition.

Figure 8: Trade effects from tariff changes, world, histograms, 1990–2010

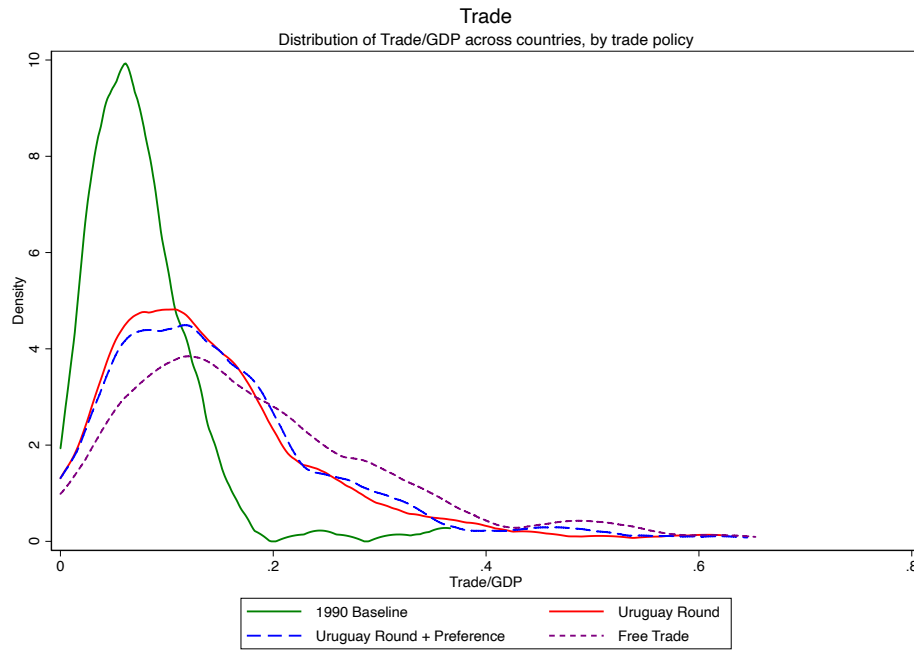


Figure 9: Trade effects from tariff changes, subsamples, detail, 1990–2010

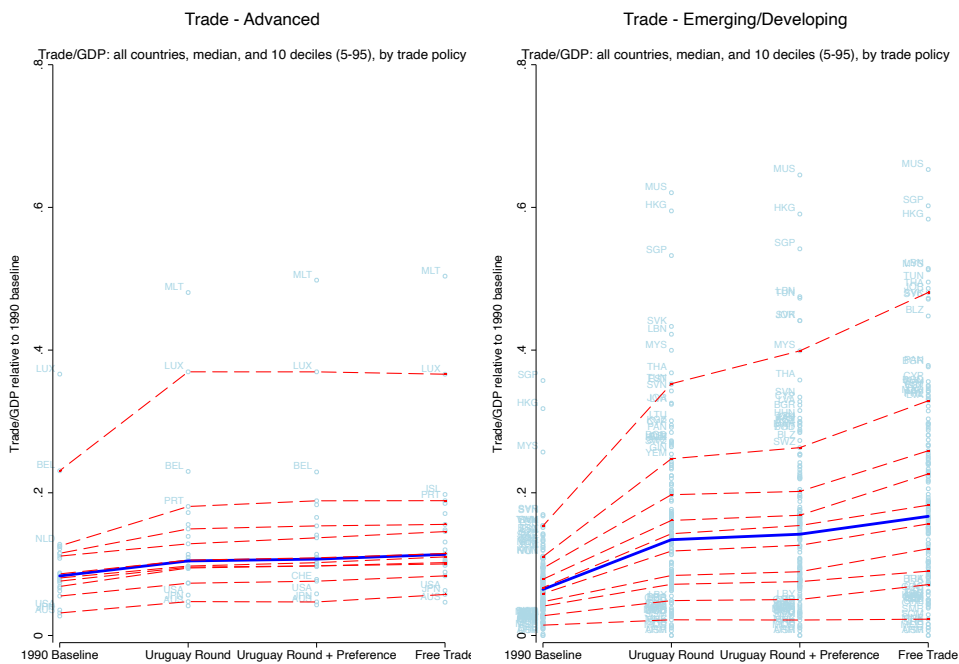


Figure 10: Entry effects from tariff changes, world, histograms, 1990–2010

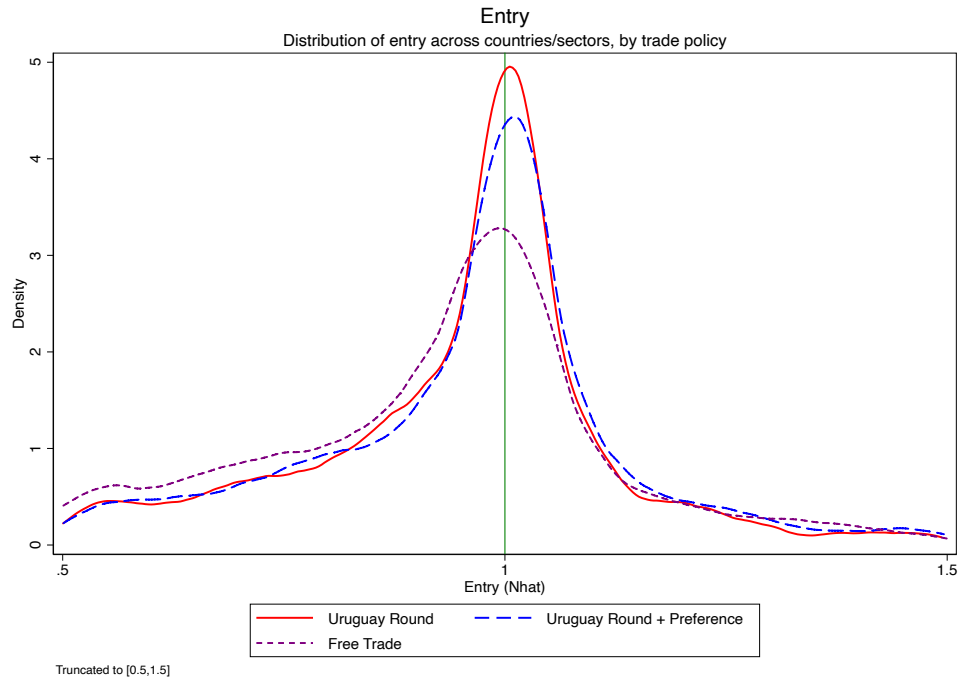


Figure 11: Entry effects from tariff changes, subsamples, histograms, 1990–2010

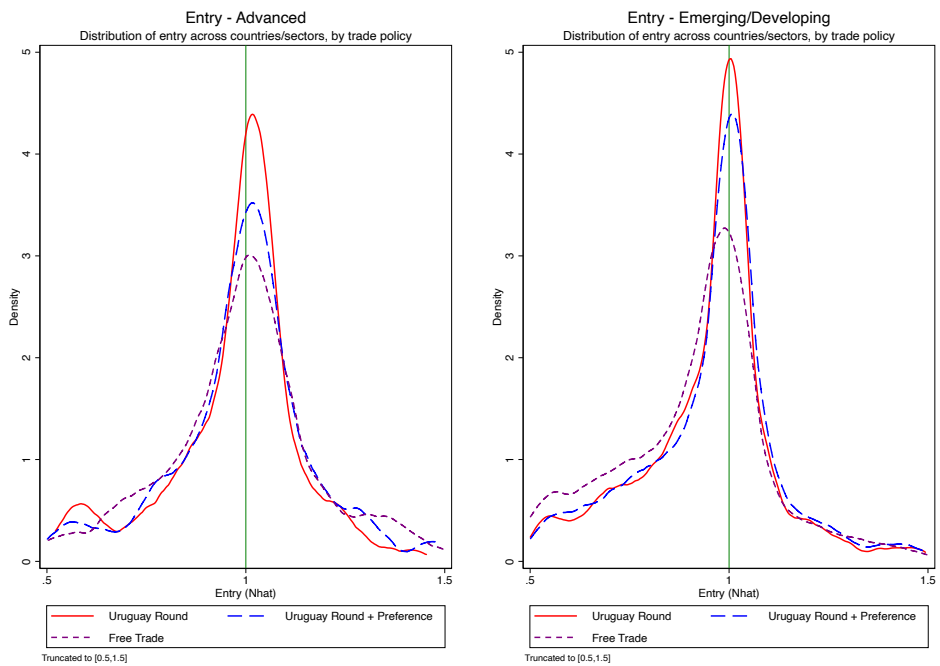


Figure 11 separates the distribution of entry effects in the Advanced versus Emerging and Developing countries. The left hand side panel shows the distribution of the change in entry for Advanced economies while the right hand side panel presents the distribution of the change in entry for Emerging markets. As we can see, trade policy impacts firm entry across these types of countries in very different ways. In particular, we find that firm entry reacts more in Advanced economies (where tariff changes were smaller) relative to Emerging economies (where tariff changes were bigger): for all three experiments the results on firm entry are very concentrated for Emerging markets while this is not the case for Advanced economies. These results show clearly that entry is impacted by tariffs not only theoretically, as we discussed several times in the paper, but that it is also affected in a quantitatively significant way by a realistic change in trade policy.

Welfare Effects Figure 12 presents the welfare effects for the world, namely the change in welfare relative to the base year 1990 (normalized to 1) for each of our first three experiments. Here, the Uruguay Round accounts for much of the welfare effects from tariff changes. In fact, the average gains across countries in our sample are +1.27% for the Uruguay Round experiment, +1.52% for Uruguay Round + Preference, and +1.64% for Free trade. So the Uruguay Round accounts for 77% or slightly more than three-quarters of the total welfare gains across countries, the PTAs account for another 15% or two-thirds of the remaining gains, and the movement to Free trade for another 7% or one-third of the remaining gains.

In addition, there is substantial heterogeneity in terms of winners and losers, as can be seen when we split the sample according to Advanced and Emerging economies in Figure 13. The Uruguay Round brought significant gains for some Emerging and Developing countries. These same countries also gain notably from the movement to Free trade, but not so much from the PTAs. The larger gains from the movement to Free trade among Emerging/Developing economies suggests the possibility that some of these countries will continue to gain as we examine negative tariffs, as we turn to next.

Negative Optimal Tariffs Finally, starting from a free trade equilibrium, we evaluate whether a negative uniform unilateral tariff is optimal or not. We do so by unilaterally changing tariffs uniformly across sectors for each of the countries in the sample one by one.²⁶ We find that a negative tariff is optimal in ten countries of the world in 1990.²⁷ Five of these are economies that appear to enjoy strong production linkages, as suggested by the sufficient conditions for a negative optimal tariff in Theorem 4(b): China, Hong Kong, India, Israel, and Vietnam. The other five countries are not suggestive of strong production linkages, however, and are Emerging or Developing economies that are mostly remote from other countries: Niger, Nigeria, Rwanda,

²⁶Concretely what we do is to evaluate the welfare effects from imposing unilateral uniform tariffs across sectors in the range between -20% to +20%. We do this in an interval of 2.5% one country at a time.

²⁷We omitted results for the countries that the Soviet Union broke into in 1991, which appear in the EORA database even in 1990, and for four other countries due to unreliable results as we moved from their 2010 tariffs to free trade: Belarus, Moldova, South Sudan, and Sudan.

Figure 12: Welfare effects from tariff changes, world, detail, 1990–2010

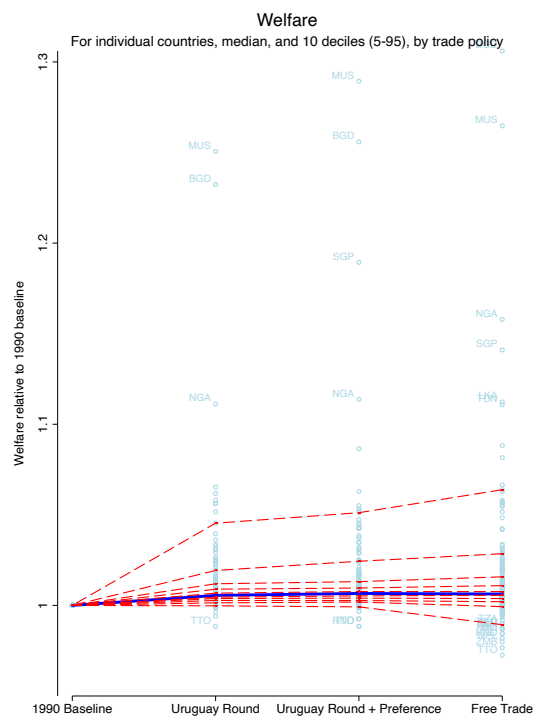
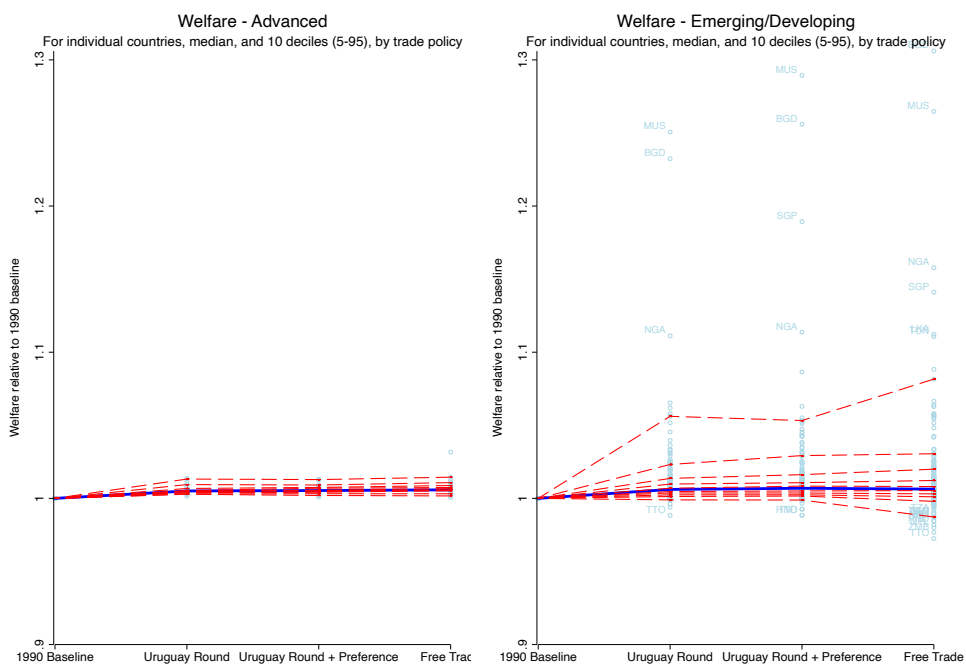


Figure 13: Welfare effects from tariff changes, subsamples, detail, 1990–2010



Samoa, and Sao Tome and Principe. These economies are suggestive of the sufficient conditions for a negative optimal tariff in Theorem 4(a), which requires remoteness from other countries and therefore a high share of expenditure on home production.

It might be thought that with a lower elasticity in services as we have used in our quantitative model, and therefore a higher markup than in manufacturing, the social planner would want to expand the services sector and contract manufacturing. But that is not what we find for these ten countries. Rather, we find that small tariffs in the manufacturing sector tend to worsen welfare for the country applying them, so that the optimal tariffs on these industries are negative. The reason for this result depends not only on the markups charged in different industries, but also on the extent of their openness and production linkages. The manufacturing industries in our quantitative model are more highly linked to the rest of economy than are the services industries. The distortions that are present in the economy must take into account both monopolistic pricing and these production linkages and the extent of openness, as we have shown in Theorem 4. By not treating the services sector in our quantitative model as perfectly competitive, as we did in the illustrative two-sector model, we are in effect “stacking the deck” against finding negative optimal tariffs in manufacturing. Despite that, we still find that tariffs in manufacturing create a domestic distortion that, in these ten countries, reverses the (positive) optimal tariff.

7 Conclusion

In this paper we study the trade, firm entry, and welfare effects arising from actual changes in trade policy in the last two decades. We do so with a multi-sector heterogeneous firm model that incorporates tariffs, traded intermediate goods, and an input-output structure that is realistic for modern economies.

First, we show that trade policy impacts firm entry and exit, a channel that has not been fully explored before. We provide a theoretical characterization of the conditions under which tariffs affect firm entry and, ultimately, welfare. We show that in a range of existing models the forces driving firm entry are inoperative only under restrictive, unrealistic assumptions about the tradability of goods, the production structure, or the way tariffs are modeled.

Next, we present a new comprehensive annual tariff dataset starting in the 1980s that allows us to measure how MFN and preferential tariffs have changed over time at a very disaggregated level. With these new data we can perform trade policy experiments which could not be explored before now, with many more interesting experiments left for future research.

Finally, with our model and data, we go beyond gains-from-trade estimates based largely on advanced economies, and use an 189-country/15-sector version of our model to quantify the effects of trade liberalization over the period 1990–2010, including the greatest round of global tariff elimination, the Uruguay Round. We find that the actual reductions in MFN tariffs in this period generated large trade, entry, and welfare effects. We also find that the effects from preferential

tariff reductions have not contributed much to total world trade and welfare, and that meaningful gains from future liberalization may remain on the table only for a few developing countries.

Indeed, while some developing countries gain from the complete removal of tariffs, a number of countries – mainly Emerging and Developing economies – would gain from going even further, to negative (optimal) tariffs. This policy would serve to facilitate trade into these countries and would raise welfare by more than the cost of providing the import subsidy—that is, even if consumers in these countries paid for the import subsidy, the policy would be welfare improving. One component of ongoing trade negotiations is to enable trade facilitation through other, non-monetary means, such as decreasing the time spent at the border, etc. We expect that such policies would be strongly welfare-improving in our model, through the usual channel of expanding trade and lowering prices on the intensive margin, and also through encouraging the entry of exporters on the extensive margin. In sum, our focus here on entry in a multi-sector, heterogeneous-firm model gives new insights into the potential welfare gains from trade liberalization.

References

- [1] Anderson, James E., and Eric van Wincoop. 2002. Borders, Trade and Welfare. In *Brookings Trade Policy Forum 2001* edited by Susan Collins and Dani Rodrik. Washington, D.C.: Brookings Institution, pp. 207–30.
- [2] Arkolakis, Costas, Arnaud Costinot, and Andrés Rodríguez-Clare. 2012. New Trade Models, Same Old Gains? *American Economic Review* 102(1): 94–130.
- [3] Bagwell, Kyle, and Seung Hoon Lee. 2015. Trade Policy under Monopolistic Competition with Firm Selection. Stanford University. Unpublished.
- [4] Bagwell, Kyle, and Robert W. Staiger. 2010. The World Trade Organization: Theory and Practice. *Annual Review of Economics* 2(1): 223–56.
- [5] Baier, Scott L., and Jeffrey H. Bergstrand. 2007. Do Free Trade Agreements Actually Increase Members’ International Trade? *Journal of International Economics* 71(1): 72–95.
- [6] Baier, Scott L., and Jeffrey H. Bergstrand. 2009. Estimating the Effects of Free Trade Agreements on Trade Flows using Matching Econometrics. *Journal of International Economics* 77(1): 77–85.
- [7] Balistreri, Edward J., Russell H. Hillberry, and Thomas F. Rutherford. 2011. Structural Estimation and Solution of International Trade Models with Heterogeneous Firms. *Journal of International Economics* 83(2): 98–108.
- [8] Blanchard, Emily J., Chad P. Bown, and Robert C. Johnson. 2015, “Global Supply Chains and Trade Policy,” mimeo Dartmouth.
- [9] Broda, Christian, and David E. Weinstein. 2006. Globalization and the Gains from Variety. *Quarterly Journal of Economics* 121(2): 541–85.
- [10] Caliendo, Lorenzo, Robert C. Feenstra, John Romalis, and Alan M. Taylor. 2015. Tariff Reductions, Entry, and Welfare: Theory and Evidence for the Last Two Decades. December 2015 version of NBER Working Paper 21768, available at http://faculty.som.yale.edu/lorenzocaliendo/Caliendo_Feenstra_Romalis_Taylor_NBER.pdf.
- [11] Caliendo, Lorenzo, and Fernando Parro. 2015. Estimates of the Trade and Welfare Effects of NAFTA. *Review of Economic Studies* 82 (1): 1–44.
- [12] Chaney, Thomas. 2008. Distorted Gravity: The Intensive and Extensive Margins of International Trade. *American Economic Review* 98(4): 1707–21.
- [13] Cherkashin, Ivan, Svetlana Demidova, Hiau Looi Kee, and Kala Krishna. 2015. Firm heterogeneity and costly trade: A new estimation strategy and policy experiments. *Journal of International Economics* 96(1): 18–36.
- [14] Costinot, Arnaud, and Andrés Rodríguez-Clare. 2014. Trade Theory with Numbers: Quantifying the Consequences of Globalization. In *Handbook of International Economics*, volume 4, edited by Gita Gopinath, Elhanan Helpman, and Kenneth Rogoff. New York: Elsevier, pp. 197–262.

- [15] Costinot, Arnaud, Andrés Rodríguez-Clare, and Iván Werning. 2016. Micro to Macro: Optimal Trade Policy with Firm Heterogeneity. NBER Working Paper 21989.
- [16] Deardorff, Alan V. 1998. Determinants of Bilateral Trade: Does Gravity Work in a Neoclassical World? In *The Regionalization of the World Economy* edited by Jeffrey A. Frankel. Chicago: University of Chicago Press, pp. 7–32.
- [17] Dhingra, Swati and John Morrow. 2019. Monopolistic Competition and Optimum Product Diversity Under Firm Heterogeneity. *Journal of Political Economy* 127(1): 196–232.
- [18] Dekle, Robert, Jonathan Eaton, and Samuel Kortum. 2008. Global Rebalancing with Gravity: Measuring the Burden of Adjustment. *IMF Staff Papers* 55(3): 511–40.
- [19] Eaton, Jonathan, Samuel Kortum, and Francis Kramarz. 2011. An Anatomy of International Trade: Evidence from French Firms. *Econometrica* 79(5): 1453–98.
- [20] Estevadeordal, Antoni, and Alan M. Taylor. 2013. Is the Washington Consensus Dead? Growth, Openness, and the Great Liberalization, 1970s–2000s. *Review of Economics and Statistics* 95(5): 1669–90.
- [21] Feenstra, Robert C., John Romalis, and Peter K. Schott. 2002. U.S. Imports, Exports, and Tariff Data, 1989–2001. NBER Working Paper 9387.
- [22] Feenstra, Robert C., Philip A. Luck, Maurice Obstfeld, and Kathryn N. Russ. 2018. In Search of the Armington Elasticity. *Review of Economics and Statistics*. March, 100(1): 135–150
- [23] Felbermayr, Gabriel, Benjamin Jung, and Mario Larch. 2015. The welfare consequences of import tariffs: A quantitative perspective. *Journal of International Economics*. 97(2): 295–309
- [24] Gervais, Antoine, and J. Bradford Jensen. 2013. The Tradability of Services: Geographic Concentration and Trade Costs. NBER Working Paper 19759.
- [25] Goldberg, Pinelopi K., Amit K. Khandelwal, Nina Pavcnik, and Petia Topalova. 2010. Imported Intermediate Inputs and Domestic Product Growth: Evidence from India. *Quarterly Journal of Economics* 125(4): 1727–67.
- [26] Hsieh, Chang-Tai, Nicholas Li, Ralph Ossa, and Mu-Jeung Yang. 2016. Accounting for the New Gains from Trade Liberalization. NBER Working Paper 22069.
- [27] Kucheryavyi, Konstantin, Gary Lyn, and Andrés Rodríguez-Clare. 2016. Grounded by Gravity: A Well-Behaved Trade Model with Industry-Level Economies of Scale. NBER Working Paper 22484.
- [28] Lasharipour, Ahmad and Volodymyr Lugovsky. 2019. Profits, Scale Economies, and the Gains from Trade and Industrial Policy. Indiana University. http://pages.iu.edu/~alashkar/Lashkaripour_Lugovsky.pdf.
- [29] Lenzen, Manfred, Keiichiro Kanemoto, Daniel Moran, and Arne Geschke. 2012. Mapping the Structure of the World Economy. *Environmental Science & Technology* 46(15): 8374–81.
- [30] Lenzen, Manfred, Daniel Moran, Keiichiro Kanemoto, and Arne Geschke. 2013. Building Eora: A Global Multi-Regional Input-Output Database at High Country and Sector Resolution. *Economic Systems Research* 25(1): 20–49.

- [31] Melitz, Marc J. 2003. The Impact of Trade on Intra-Industry Reallocations and Aggregate Industry Productivity. *Econometrica* 71(6): 1695–1725.
- [32] Melitz, Marc J., and Gianmarco I. P. Ottaviano. 2008. Market Size, Trade, and Productivity. *Review of Economic Studies* 75(1): 295–316.
- [33] Melitz, Marc J., and Stephen J. Redding. 2014. Missing Gains from Trade? *American Economic Review* 104(5): 317–21.
- [34] Melitz, Marc J., and Stephen J. Redding. 2015. New Trade Models, New Welfare Implications. *American Economic Review* 105(3): 1105–46.
- [35] Ossa, Ralph. 2014. Trade Wars and Trade Talks with Data. *American Economic Review* 104(12): 4104–46.
- [36] Redding, Stephen J., and Anthony J. Venables. 2004. Economic Geography and International Inequality. *Journal of International Economics* 62(1): 53–82.
- [37] Rose, Andrew K. 2004. Do We Really Know That the WTO Increases Trade? *American Economic Review* 94 (1): 98–114.
- [38] Spearot, Alan. 2016. Unpacking the Long Run Effects of Tariff Shocks: New Structural Implications from Firm Heterogeneity Models. *American Economic Journal: Microeconomics* 8(2): 128–167.
- [39] Subramanian, Arvind, and Shang-Jin Wei. 2007. The WTO Promotes Trade, Strongly but Unevenly. *Journal of International Economics* 72(1): 151–75.
- [40] Trefler, Daniel. 1993. Trade Liberalization and the Theory of Endogenous Protection: An Economic Study of U.S. Import Policy. *Journal of Political Economy* 101(1): 138–60.
- [41] Trefler, Daniel. 2006. The Long and Short of the Canada-U.S. Free Trade Agreement. *Economics of Industry Papers* 41, Suntory and Toyota International Centres for Economics and Related Disciplines, LSE.
- [42] Yi, Kei-Mu. 2003. “Can Vertical Specialization Explain the Growth of World Trade?,” *Journal of Political Economy*, 111(1): 52–102.

A Tariffs, Icebergs, Entry, and Welfare

We draw from an earlier version of this working paper (Caliendo, Feenstra, Romalis, and Taylor, 2015), to derive the impact of a change in ad valorem tariffs on entry in a one-sector Melitz-Chaney model. Consider first the case of tariffs applied to the variable cost of imports—or ”cost” tariffs—with no rebate of the tariff revenue to consumers. The government instead wastes the revenue on a good with zero utility, so this case will be identical to iceberg trade costs. Assume labor in country i is the numeraire, with $w_i = 1$. The firm in country i selling to country j solves the profit-maximization problem

$$\pi_{ij}(\varphi) = \max_{p_{ij}(\varphi) \geq 0} \left\{ p_{ij}(\varphi) q_{ij}(\varphi) - \frac{\tau_{ij}(1+t_{ij})q_{ij}(\varphi)}{\varphi} - f_{ij} \right\}, \quad (41)$$

where $q_{ij}(\varphi)$ is the quantity chosen by consumers at the price $p_{ij}(\varphi)$, the firm’s marginal costs inclusive of iceberg costs τ_{ij} and the ad valorem cost tariff t_{ij} are $\tau_{ij}(1+t_{ij})/\varphi$, and f_{ij} are the fixed operating costs. We assume CES demand with elasticity σ and a Pareto distribution, $G(\varphi) = 1 - \varphi^{-\theta}$, for the firm productivities, with $\varphi \geq 1$. Then it can be shown by evaluating the integrals below that assumption R2 of Arkolakis, Costinot, and Rodríguez-Clare (ACR, 2012) holds, namely:

$$\underbrace{\int_{\varphi_{ij}^*}^{\infty} \pi_{ij}(\varphi) dG(\varphi)}_{\Pi_{ij} \equiv \text{profits from } j} = \frac{\sigma-1}{\sigma\theta} \underbrace{\int_{\varphi_{ij}^*}^{\infty} p_{ij}(\varphi) q_{ij}(\varphi) dG(\varphi)}_{R_{ij} \equiv \text{revenue paid by consumers in } j}, \quad (42)$$

where φ_{ij}^* is the zero cutoff profit level of productivity at which $\pi_{ij}(\varphi_{ij}^*) = 0$. Note that both the profits from j and the revenue paid by consumers in j go to the firms in country i . So summing over all destination markets j , denoting the mass of entrants by N_i and the sunk costs of entry by f_i^E , and using the free-entry condition and equation (42), we can compute the integrals to obtain $N_i f_i^E = \Pi_i = \frac{\sigma-1}{\sigma\theta} R_i = \left(\frac{\sigma-1}{\sigma\theta}\right) L_i$, where L_i is the labor earnings in this one-sector economy coming from the aggregate revenue of firms. It immediately follows that entry is:

$$N_i = \frac{\sigma-1}{\sigma\theta} \frac{1}{f_i^E} L_i, \quad (43)$$

which is fixed and does not vary with iceberg trade costs or with un-rebated cost tariffs.

Furthermore, this result of fixed entry will continue to hold if we add a nontraded competitive sector to each country, as in our simplified model of section 3. In that case, the fraction $(1 - \alpha)$ of labor will be devoted to the competitive sector, with αL remaining for the differentiated sector. Then entry into that sector is determined by:

$$N_i = \frac{\sigma-1}{\sigma\theta} \frac{\alpha}{f_i^E} L_i, \quad (44)$$

which is again fixed.

Returning to the one-sector model, now consider the realistic case of *ad valorem* tariffs applied to the import revenue gross of price markups—or ”revenue” tariffs—with full rebate of the tariff revenue to consumers. In this case, the tariff-inclusive price $p_{ij}(\varphi)$ must be divided by $(1 + t_{ij})$ to

obtain the net price $p_{ij}(\varphi)/(1 + t_{ij})$ earned by the firm, which is used to compute net revenue of the firm. Profits of the the firm are then

$$\pi_{ij}(\varphi) = \max_{p_{ij}(\varphi) \geq 0} \left\{ \frac{p_{ij}(\varphi)}{(1 + t_{ij})} q_{ij}(\varphi) - \frac{x_i}{\varphi} \tau_{ij} q_{ij}(\varphi) - f_{ij} \right\}. \quad (45)$$

Direct calculation of the integrals below shows that the analogous expression for R2, but now in the presence of revenue tariffs, becomes

$$\underbrace{\int_{\varphi_{ij}^*}^{\infty} \pi_{ij}(\varphi) dG(\varphi)}_{\Pi_{ij} \equiv \text{profits from } j} = \frac{\sigma - 1}{\sigma \theta} \underbrace{\int_{\varphi_{ij}^*}^{\infty} \frac{p_{ij}(\varphi)}{(1 + t_{ij})} q_{ij}(\varphi) dG(\varphi)}_{R_{ij} \equiv \text{revenue earned by firms from } j}. \quad (46)$$

A clear difference between (42) and (46) is that the former uses revenue R_{ij} paid by consumers, whereas the latter uses revenue R_{ij} earned by firms, and these differ when ad valorem revenue tariffs are used.²⁸ This difference is immaterial, however, when the tariff revenue is fully rebated. In that case the labor earnings paid by the firm are still L_i , equal to the labor endowment. Then summing over destination markets j , firm revenue net of tariffs is $R_i = L_i$. It follows that entry is determined by $N_i f_i^E = \Pi_i = \frac{\sigma-1}{\sigma\theta} R_i = \left(\frac{\sigma-1}{\sigma\theta}\right) L_i$, which is again fixed as in (43).

Yet, a careful re-examination of these two cases shows that entry is not fixed under alternative assumptions on the tariff rebate. For example, with full rebate of the revenue under cost tariffs, we would obtain $N_i = \frac{\sigma-1}{\sigma\theta} \frac{1}{w_i f_i^E} R_i$. The consumer expenditure R_i in country i is at tariff-inclusive prices is given by $R_i = w_i L_i + T_i$, which depends on the collected tariff revenue T_i . Therefore entry depends on the tariff, and is given by

$$N_i = \frac{\sigma - 1}{\sigma \theta} \frac{1}{w_i f_i^E} (w_i L_i + T_i).$$

Alternatively, with no rebate under revenue tariffs, then country i tariff revenue T_i is wasted. It follows that in this case we have that $N_i = \frac{\sigma-1}{\sigma\theta} \frac{1}{w_i f_i^E} R_i$, where $R_i = w_i L_i - T_i$. Therefore entry again depends on the tariff, and is given by

$$N_i = \frac{\sigma - 1}{\sigma \theta} \frac{1}{w_i f_i^E} (w_i L_i - T_i).$$

Table 2 fully summarizes all of the above new results, which apply to the benchmark case of the one-sector model with Pareto productivity draws. It is worth emphasizing an important and novel insight from these results, which is that the existence of a revenue effect coming from a tariff rebate is neither necessary nor sufficient to generate changes in entry.

As the table shows, given the variety of possible trade cost formulations any analysis of the impact of tariffs on entry and welfare could in principle consider all four hypothetical tariff/rebate configurations. But in this paper we focus exclusively on ad valorem tariffs applied to the revenue of imports. This choice is made for two reasons. First, we note that these tariffs are the realistic choice, since the alternative cost-based tariffs in Costinot and Rodríguez-Clare (2014) and Felbermayr, Jung, and Larch (2015) are applied only to the variable costs of an import, and not to their full market value (variable costs plus fixed costs plus profits). But no such a distinction between variable

²⁸In contrast, with iceberg trade costs, c.i.f. revenue paid by consumers (at c.i.f. prices but with quantity net of iceberg costs) equals f.o.b. revenue earned by firms (at lower f.o.b. prices but with quantity gross of iceberg costs).

Table 2: Operation of the entry margin under different forms of trade costs

	No rebate	Rebate
Icebergs	No: $N_i = \frac{\sigma-1}{\sigma\theta} \frac{1}{f_i^E} L_i$	Not applicable
Cost tariffs	No: $N_i = \frac{\sigma-1}{\sigma\theta} \frac{1}{f_i^E} L_i$	Yes: $N_i = \frac{\sigma-1}{\sigma\theta} \frac{1}{w_i f_i^E} (w_i L_i + T_i)$
Revenue tariffs	Yes: $N_i = \frac{\sigma-1}{\sigma\theta} \frac{1}{w_i f_i^E} (w_i L_i - T_i)$	No: $N_i = \frac{\sigma-1}{\sigma\theta} \frac{1}{f_i^E} L_i$

and fixed costs and profits is made when the customs value of an import shipment is evaluated at the border, as the well known customs rules make abundantly clear.²⁹ But the second, more important reason, comes from our finding above that entry is fixed in the one-sector model when using revenue tariffs with rebate. This is a very convenient, and parsimonious, starting point for our broader analysis of tariffs, that now builds from the earlier literature.

B Quantitative Model - Further details

In this Appendix we present a schematic representation of the Quantitative model, the problem of the household, and the cost minimization problems of the intermediate and finished goods producers.

The schematic production structure of the model is shown in Figure 14, where the significant inclusion of inter-sectoral production linkages is shown by the crossed highlighted arrows.

B.1 Households

Assume that agents consume only domestically produced nontraded finished goods with preferences given by

$$U_i(C_i) = \prod_{s=1}^S (C_{i,s})^{\alpha_{i,s}}, \quad (47)$$

where $C_{i,s}$ is the consumption of a finished good with sector index s and produced in country i , and the $\alpha_{i,s}$ are standard expenditure shares.

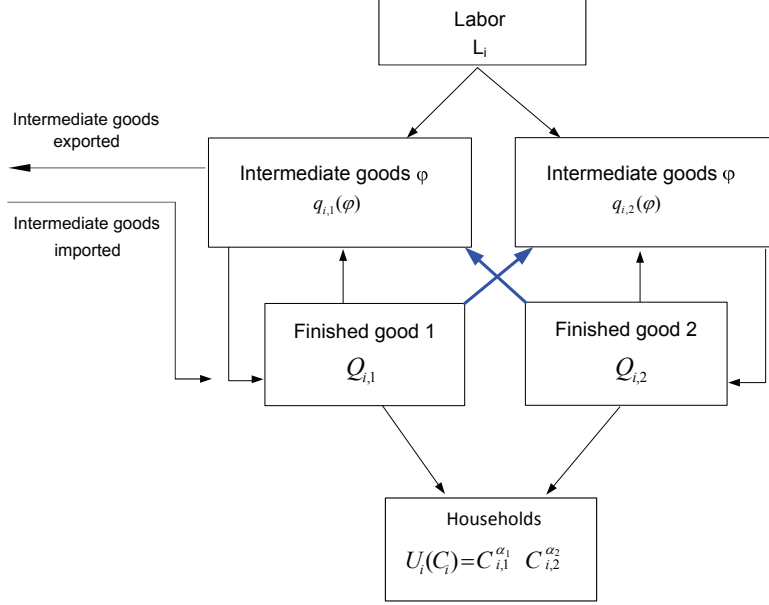
Demand is then given by

$$C_{i,s} = \frac{\alpha_{i,s} R_i}{P_{i,s}}, \quad (48)$$

where R_i represents the income of the agents in country i , and $P_{i,s}$ is the price of finished good s in country i . As explained below, agents derive income from two sources, labor income and rebated tariff revenue, and firm profits will be equal to zero by an assumption of free entry.

²⁹Under the rules of the World Trade Organization, *ad valorem* tariffs are applied to the "customs value" of an import product, which is intended to reflect the price paid between unrelated parties. Such a price should, obviously, not exclude fixed costs or markups/profits. See: http://www.wto.org/english/tratop_e/cusval_e/cusval_info_e.htm.

Figure 14: Schematic production structure of the model



B.2 Finished goods producers

Cost minimization The cost minimization problem of finished good firms in sector s and country i is³⁰

$$\min_{\{q_{ji,s}(\varphi)\} \geq 0} \sum_{j=1}^M N_{j,s} \int_{\varphi_{ji,s}^*}^{\infty} p_{ji,s}(\varphi) q_{ji,s}(\varphi) g_s(\varphi) d\varphi,$$

subject to

$$Q_{i,s} = \left[(Q_{ii,s})^{\frac{\omega_s-1}{\omega_s}} + (Q_{i,s}^F)^{\frac{\omega_s-1}{\omega_s}} \right]^{\frac{\omega_s}{\omega_s-1}},$$

where

$$Q_{ii,s} = \left(N_{i,s} \int_{\varphi_{ii,s}^*}^{\infty} q_{ii,s}(\varphi)^{\frac{\sigma_s-1}{\sigma_s}} dG_s(\varphi) \right)^{\frac{\sigma_s}{\sigma_s-1}}, \quad Q_{i,s}^F = \left(\sum_{j \neq i}^M N_{j,s} \int_{\varphi_{ji,s}^*}^{\infty} q_{ji,s}(\varphi)^{\frac{\sigma_s-1}{\sigma_s}} dG_s(\varphi) \right)^{\frac{\sigma_s}{\sigma_s-1}},$$

and $q_{ji,s}(\varphi)$ is the demand by country i and sector s of an intermediate variety φ from country j with the tariff-inclusive price $p_{ji,s}(\varphi)$, $Q_{i,s}$ is the total quantity of finished goods produced, and $N_{j,s}$ is the number of entering firms in country j and sector s . As noted above, the number of firms/products actually sold to market i is $N_{j,s} \left[1 - G_s(\varphi_{ji,s}^*) \right] = N_{j,s} \varphi_{ji,s}^{*-\theta_s}$. Note that $q_{ji,s}(\varphi) > 0$, and the good is produced by j for i , if and only if $\varphi \geq \varphi_{ji,s}^*$. Otherwise $q_{ji,s}(\varphi) = 0$, which accounts for the lower limit of the integral.

³⁰Intermediate good producers are heterogeneous in their productivity levels and since a particular variety is related to a particular productivity throughout the paper we will abuse notation and denote by φ both the productivity level and variety of the firm.

B.3 Intermediate goods producers

Cost minimization We solve the problem of the tradable intermediate variety producer in two stages. First, we determine the minimum cost of producing a given quantity. The solution to this problem is the variable cost function of the firm. Second, we solve the profit maximization problem of the firm using the cost function derived in the first stage and allowing for the fixed costs.

The cost minimization problem of tradable intermediate firms of variety φ in country i is

$$C(q_{i,s}(\varphi); w_i, \{P_{i,s'}\}_{s'=1}^S) = \min_{(l_i(\varphi), \{m_{i,s'}(\varphi)\}_{s'=1}^S) \geq 0} w_i l_{i,s}(\varphi) + \sum_{s'=1}^S P_{i,s'} m_{i,s'}(\varphi),$$

subject to (4), where w_i denotes the wage in country i .

The solution to the cost minimization problem yields the following variable cost function for each producer of variety φ in country i and sector s :

$$C(q_{i,s}(\varphi); x_{i,s}) = \frac{x_{i,s}}{\varphi} q_{i,s}(\varphi). \quad (49)$$

The marginal cost of each producer is then given by

$$MC_{i,s}(q_{i,s}(\varphi); x_{i,s}) = \frac{x_{i,s}}{\varphi}. \quad (50)$$

C Proofs of Theorems 1 to 4 and Corollary 5

Theorem 1 The mass of entering firms N_i is the same under free trade and prohibitive tariffs. If and only if $\alpha < 1$, then: (a) near the free trade equilibrium reducing the tariff will increase entry; (b) near the prohibitive tariff, reducing the tariff will decrease entry; (c) entry is lower at all intermediate tariff levels than under free trade or prohibitive tariffs.

Proof. Parts (a) and (b) have been shown already, but not part (c). The latter can be seen to follow from (25), (28), (27), and (29), as follows. From (25) using (28) and (27) we see that

$$Y_H = \alpha L \left/ \left(1 - \tilde{\gamma} \frac{1 + t \lambda_{HH}}{1 + t} - \alpha \frac{t(1 - \lambda_{HH})}{1 + t} \right) \right.$$

It follows from (29) that $N_H = (\sigma - 1)\alpha L / [(1 - \tilde{\gamma}) \sigma f_i^E]$ when $t = 0$ or $\lambda_{HH} = 1$. It then follows that $N_H \leq (\sigma - 1)\alpha L / [(1 - \tilde{\gamma}) \sigma f_i^E]$ at all other tariff equilibria provided that for $t > 0$ and $\lambda_{HH} < 1$,

$$\left(\frac{1 + \lambda_{HH}t}{1 + t} \right) \left/ \left[1 - \tilde{\gamma} \left(\frac{1 + \lambda_{HH}t}{1 + t} \right) - \alpha t \frac{(1 - \lambda_{HH})}{1 + t} \right] \right. < \frac{1}{(1 - \tilde{\gamma})}.$$

Straightforward but tedious algebra shows this condition is satisfied for $\alpha < 1$ regardless of the value of γ . ■

Theorem 2 (a) Starting from free trade, a small increase in the tariff dt in country H is worse than a small increase in iceberg transport costs, where both lead to the same change in λ_{HH} , if and only if $d \ln U_H < -\frac{\alpha}{(1-\gamma)\theta} d \ln \lambda_{HH}$. (b) A necessary and sufficient condition for this to occur is that

$[(\kappa\Delta - 1)/(1 - \gamma)\theta] + 1/(1 - \tilde{\gamma}) < 0$, or equivalently:

$$\gamma > 1 - \left[\frac{\sigma(1 - \alpha) + \kappa^{-1} - 1}{(\sigma - 1)(\sigma + 1 - \kappa^{-1})} \right].$$

(c) Condition (36) can hold only if $\gamma > 0$ (production linkages are present) or $\alpha < 1$ (the service sector is present).

Proof. Part (a) is established in the main text and Appendix A. For part (b), re-write the welfare change expression from (35) as

$$\frac{dU_H}{U_H} = -\frac{\alpha}{\theta(1 - \gamma)} \frac{d\lambda_{HH}}{\lambda_{HH}} + \left[\frac{\alpha(1 - \lambda)}{\theta(1 - \gamma)}(\kappa\Delta - 1) + \frac{\alpha(1 - \lambda)}{1 - \tilde{\gamma}} \right] dt.$$

Since $\lambda < 1$, for $d \ln U_H < -\frac{\alpha}{(1 - \gamma)\theta} d \ln \lambda_{HH}$, it is necessary and sufficient that

$$\frac{\alpha}{\theta(1 - \gamma)}(\kappa\Delta - 1) + \frac{\alpha}{1 - \tilde{\gamma}} < 0. \quad (51)$$

Using $\tilde{\gamma} = \gamma \frac{\sigma - 1}{\sigma}$ and re-arranging the terms we obtain the condition on γ as in (36).

To establish part (c), note that the bracketed term on the right of (36) is less than unity if and only if,

$$\sigma(1 - \alpha) + \kappa^{-1} - 1 < (\sigma - 1)(\sigma + 1 - \kappa^{-1}) = \sigma(\sigma - \kappa^{-1}) - 1 + \kappa^{-1},$$

or $(1 - \alpha) < (\sigma - \kappa^{-1}) > 0$. If we choose $\alpha = 1$ then this inequality is satisfied, so in that case (36) implies that $\gamma > 0$. Conversely, if $\gamma = 0$ then $\Delta = \alpha$ and so (51) becomes $(\alpha/\theta)(\kappa\alpha - 1) + \alpha < 0$, which can hold only if $\alpha < 1$, which establishes part (c). ■

The proofs of Theorems 3 and 4 use results derived in Appendix D. For Theorem 3, we prove a more technical version here that implies the version stated in the main text.

Theorem 3' A small increase in the tariff dt in country H starting from free trade will reduce welfare if (36) holds and also a polynomial denoted by $f(\gamma)$ is non-negative. If $\lambda = 1$ then $f(0) > 0$ and $f(1) = 0$, while for $0.5 \leq \lambda < 1$ and $\theta \geq (1 - \alpha)$ then $f(0) > 0$ and $f(1) > 0$. In addition, $f(\gamma^*) < 0$ for some intermediate values $0 < \gamma^* < 1$ when λ is close to unity.

Proof. Consider the welfare change formula in (23), where $dT_H = dt(1 - \lambda)Y_H = dt(1 - \lambda)\alpha L/(1 - \tilde{\gamma})$ with $T_H = 0$ in the SFTE. From here, the necessary and sufficient condition for the negative optimal tariff is

$$\left. \frac{dP_H}{P_H} \right|_{t=0} > \left(\frac{1 - \alpha}{1 - \tilde{\gamma}} \right) dt$$

Plugging in the solution for dP_H/P_H from (65) and re-arranging terms, a sufficient condition for this inequality to hold is that (see Appendix D):

$$f(\gamma) \equiv a(\gamma^2 - \gamma^3) + b(\gamma - \gamma^2) + c(1 - \gamma) + 2(\kappa - 1)(1 - \lambda)^2\gamma \geq 0.$$

The coefficients b and c depend on $\tilde{\gamma} \equiv \gamma \frac{\sigma - 1}{\sigma}$ unless $\lambda = 1$. For $\gamma = 0$, we show in Appendix D that $c > 0$ provided that $\lambda \geq 0.5$ and $\theta \geq \sigma(1 - \alpha)$. It follows immediately that $f(0) > 0$ and also that $f(1) > 0$ provided $\lambda < 1$, with $f(1) = 0$ when $\lambda = 1$. The further result that $f(\gamma^*) < 0$ for some intermediate values $0 < \gamma^* < 1$ is proved in Appendix D. ■

Theorem 4 Consider an economy near an SFTE with zero tariffs initially, but with $\tau > 1$. Then for small increases in the home tariff $dt > 0$, the welfare change is:

(a) For $\gamma = 0$ (no linkages):

$$\lim_{\lambda \rightarrow 1} \frac{1}{(1-\lambda)} \frac{d \ln U_H}{dt} \Big|_{\gamma=t=0} = \frac{\alpha}{\theta} \left[\alpha \kappa - \frac{(\kappa + \theta)^2}{2(\kappa + \theta) - 1} \right] + \underbrace{\alpha}_{\text{revenue effect}}$$

which is negative for $0 < \alpha < \frac{\kappa - (\theta - 1)(\sigma - 1)}{2(\kappa + \theta) - 1} < 0.5$. It follows that the optimal home tariff is negative.

(b) For $\gamma \rightarrow 1$ (strong linkages):

$$\lim_{\gamma \rightarrow 1} (1 - \gamma) \frac{d \ln U_H}{dt} \Big|_{t=0} = -\frac{\alpha(1-\lambda)}{2\theta} [\kappa\sigma(1-\alpha) + \theta] + \underbrace{0}_{\text{vanishing revenue effect}}$$

which is negative for all $0.5 < \lambda < 1$ and $0 < \alpha \leq 1$. It follows again that the optimal home tariff is negative.

Proof. Using $dT_H = dt(1-\lambda)Y_H = dt(1-\lambda)\alpha L/(1-\tilde{\gamma})$ with $T_H = 0$ in the SFTE in (23), the welfare change is,

$$\frac{dU_H}{U_H} \Big|_{t=0} = -\alpha \frac{dP_H}{P_H} + \frac{dt(1-\lambda)\alpha}{(1-\tilde{\gamma})} \quad (52)$$

When $\gamma = 0$, then $\tilde{\gamma} = 0$, $\Delta = \alpha$, and the welfare change becomes

$$\frac{dU_H}{U_H} \Big|_{\gamma=t=0} = -\alpha \frac{dP_H}{P_H} \Big|_{\gamma=0} + dt(1-\lambda)\alpha$$

Dividing through by $(1-\lambda)$, using (66) and taking the limit as $\lambda \rightarrow 1$ obtains part (a) of Theorem 4.

To prove part (b), multiply (52) through by $1-\gamma$ and take the limit using expression (67) and the fact that $\Gamma \rightarrow 1$ as $\gamma \rightarrow 1$. ■

Corollary 5 The change in the home share as the tariff increases from SFTE is:

(a) For $\gamma = 0$ (no linkages):

$$\lim_{\lambda \rightarrow 1} \frac{1}{(1-\lambda)} \frac{d \ln \lambda_{HH}}{dt} > 0.$$

(b) For $\gamma \rightarrow 1$ (strong linkages): If $\Delta \geq 0$ then,

$$\lim_{\gamma \rightarrow 1} \frac{d \ln \lambda_{HH}}{dt} > 0.$$

Proof. From equation (35) it follows that

$$\lim_{\lambda \rightarrow 1} \frac{1}{(1-\lambda)} \frac{d \ln U_H}{dt} = -\frac{\alpha}{\theta} \lim_{\lambda \rightarrow 1} \frac{1}{1-\lambda} \frac{d \ln \lambda_{HH}}{dt} + \frac{\alpha}{\theta} (\kappa\Delta - 1) + \alpha$$

At the same time, part (a) of Theorem 4 states that

$$\lim_{\lambda \rightarrow 1} \frac{1}{(1-\lambda)} \frac{d \ln U_H}{dt} = \frac{\alpha}{\theta} \left[\alpha \kappa - \frac{(\kappa + \theta)^2}{2(\kappa + \theta) - 1} \right] + \alpha$$

Combining these two equations and using $\Delta = \alpha$ when $\gamma = 0$, we obtain

$$\lim_{\lambda \rightarrow 1} \frac{1}{(1-\lambda)} \frac{d \ln \lambda_{HH}}{dt} > 0 \quad \text{for} \quad \frac{(\kappa + \theta)^2}{2(\kappa + \theta) - 1} > 1.$$

The condition on the right is always satisfied, as can be seen by shifting the denominator of the ratio to the right and rewriting the condition as $(\kappa + \theta - 1)^2 > 0$, which holds because $\kappa > 1$. This proves part (a).

Analogously, to proof part (b) use equation (35) to write

$$\lim_{\gamma \rightarrow 1} (1-\gamma) \frac{d \ln U_H}{dt} = -\frac{\alpha}{\theta} \lim_{\gamma \rightarrow 1} \frac{d \ln \lambda_{HH}}{dt} + \frac{\alpha(1-\lambda)}{\theta} (\kappa \Delta - 1).$$

Combining this with part (b) of Theorem 4, which states

$$\lim_{\gamma \rightarrow 1} (1-\gamma) \frac{d \ln U_H}{dt} = -\frac{\alpha(1-\lambda)}{2\theta} [\kappa \sigma(1-\alpha) + \theta],$$

we obtain the condition:

$$\lim_{\gamma \rightarrow 1} \frac{d \ln \lambda_{HH}}{dt} > 0 \quad \text{for} \quad \kappa \Delta + \frac{\kappa \sigma(1-\alpha) + \theta}{2} > 1.$$

Noting that $\Delta = 1 - \sigma(1-\alpha)$ when $\gamma = 1$, the above condition is rewritten as

$$\lim_{\gamma \rightarrow 1} \frac{d \ln \lambda_{HH}}{dt} > 0 \quad \text{for} \quad \kappa \left[1 - \frac{\sigma(1-\alpha)}{2} \right] + \frac{\theta}{2} > 1.$$

If $\sigma(1-\alpha) \leq 1$ then this condition is easier to satisfy than that in part (a), so it always holds. Note that $\sigma(1-\alpha) \leq 1$ is equivalent to $\Delta \geq 0$, which proves part (b). ■

D Two-Sector, Two-Country Model with a Change in the Home Tariff

We start at a symmetric free trade equilibrium, where the home country is unilaterally changing its tariffs, so that $t_{HF} = 0$ throughout while $t_{FH} = t$, and the latter is zero initially but then changes by dt . We further normalize $w_H \equiv 1$ but determine w_F endogenously. We totally differentiate all endogenous terms starting at the symmetric free trade equilibrium (SFTE).

Define the terms,

$$A_{ji} = N_j \left(\frac{w_j(1+t_{ji})}{Y_i} \right)^{\frac{\sigma-1-\theta}{\sigma-1}}, \quad (53)$$

where

$$B_{ji} = \frac{\theta}{\theta + 1 - \sigma} (\sigma f_{ji})^{\frac{-\theta + \sigma - 1}{\sigma - 1}} \left(\frac{\sigma}{\sigma - 1} \right)^{-\theta}.$$

The costs of production are,

$$x_i = \bar{\gamma} (w_i)^{1-\gamma} (P_i)^\gamma,$$

with $\bar{\gamma} = \gamma^\gamma (1-\gamma)^{(1-\gamma)}$. Then using A_{ji} , B_{ji} , x_i , and (13) for the two-sector two-country case, we obtain

$$P_i = \left[A_{ii} B_{ii} (x_i)^{-\theta} + A_{ji} B_{ji} (x_j \tau_{ji} (1+t_{ji}))^{-\theta} \right]^{-\frac{1}{\theta}}, \quad (54)$$

for $t_{FH} = t$ and $t_{HF} = 0$, where the trade shares are denoted by

$$\lambda_{ji} = A_{ji} B_{ji} \left(\frac{x_j (1+t_{ji})}{P_i} \right)^{-\theta}. \quad (55)$$

We need to develop equations for dP_H/P_H and dP_F/P_F , which we can compute from (54). Differentiating this for home and foreign, and using $d \ln(1+t) = dt$ since $t = 0$ initially,

$$\begin{aligned} \frac{dP_H}{P_H} &= -\frac{1}{\theta} \{ \lambda_{HH} (d \ln A_{HH} - \theta d \ln x_H) + \lambda_{FH} [d \ln A_{FH} - \theta d \ln x_F - \theta dt] \}, \\ \frac{dP_F}{P_F} &= -\frac{1}{\theta} \{ \lambda_{FF} (d \ln A_{FF} - \theta d \ln x_F) + \lambda_{HF} (d \ln A_{HF} - \theta d \ln x_H) \}, \end{aligned}$$

Then using all the above equations with $\lambda_{FF} = \lambda_{HH} = \lambda$ at the SFTE, we obtain

$$\begin{aligned} \frac{dP_H}{P_H} &= -\frac{1}{\theta} \left\{ \begin{array}{l} \lambda d \ln A_{HH} - \lambda \theta d \ln x_H \\ + (1-\lambda) d \ln A_{FH} - (1-\lambda) \theta d \ln x_F - (1-\lambda) \theta dt \end{array} \right\} \\ &= -\frac{1}{\theta} \left\{ \begin{array}{l} \lambda d \ln N_H - \lambda \theta \gamma d \ln P_H - (1-\kappa) d \ln Y_H \\ + (1-\lambda) [(1-\kappa) d \ln w_F + (1-\kappa) dt] \\ - (1-\lambda) \theta (1-\gamma) d \ln w_F - (1-\lambda) \theta \gamma d \ln P_F - (1-\lambda) \theta dt \end{array} \right\}, \end{aligned}$$

where the second line uses $dw_H = 0$ and $dN_F = 0$, and with $\kappa \equiv \theta/(\sigma-1) > 1$. Simplifying, we obtain,

$$\frac{dP_H}{P_H} = -\frac{1}{(1-\lambda\gamma)\theta} \left\{ \begin{array}{l} \lambda d \ln N_H - (1-\kappa) d \ln Y_H - (1-\lambda) \theta \gamma d \ln P_F \\ + (1-\lambda) [1-\kappa - \theta(1-\gamma)] d \ln w_F + (1-\lambda) (1-\kappa - \theta) dt \end{array} \right\}. \quad (56)$$

For the foreign country we have,

$$\begin{aligned} \frac{dP_F}{P_F} &= -\frac{1}{\theta} \left\{ \begin{array}{l} \lambda d \ln A_{FF} - \lambda \theta d \ln x_F \\ + (1-\lambda) d \ln A_{HF} - (1-\lambda) \theta d \ln x_H \end{array} \right\} \\ &= -\frac{1}{\theta} \left\{ \begin{array}{l} -[\lambda \theta (1-\gamma) + (1-\lambda) (1-\kappa)] d \ln w_F - \lambda \theta \gamma d \ln P_F \\ + (1-\lambda) d \ln N_H - (1-\lambda) \theta \gamma d \ln P_H \end{array} \right\}, \end{aligned}$$

where the second line uses $d \ln Y_F = d \ln w_F$ and $dN_F = 0$. Finally we obtain,

$$\frac{dP_F}{P_F} = -\frac{1}{(1-\lambda\gamma)\theta} \left\{ \begin{array}{l} (1-\lambda) d \ln N_H - (1-\lambda) \theta \gamma d \ln P_H \\ - [(1-\lambda) (1-\kappa) + \lambda \theta (1-\gamma)] d \ln w_F \end{array} \right\}. \quad (57)$$

Multiply (56) and (57) by $(1-\lambda\gamma)\theta$, take their difference, and then divide by the term appearing on their difference, $[(1-\lambda\gamma) + (1-\lambda)\gamma]\theta = [1 + (1-2\lambda)\gamma]\theta$, to obtain:

$$\left(\frac{dP_H}{P_H} - \frac{dP_F}{P_F} \right) = \frac{1}{[1 + (1 - 2\lambda)\gamma]\theta} \left\{ \begin{array}{l} (1 - 2\lambda)d \ln N_H + (1 - \kappa) d \ln Y_H \\ + [\theta(1 - 2\lambda)(1 - \gamma) - 2(1 - \lambda)(1 - \kappa)] d \ln w_F \\ - (1 - \lambda)(1 - \kappa - \theta) dt \end{array} \right\}. \quad (58)$$

Now we need to solve for $d \ln w_F$. We use the trade balance condition $\frac{\lambda_{FH}}{(1+t)} Y_H = \lambda_{HF} Y_F$. Totally differentiating at the SFTE, and using $d \ln Y_F = d \ln w_F$ we obtain

$$d \ln w_F = -d \ln \lambda_{HF} + d \ln \lambda_{FH} + d \ln Y_H - dt. \quad (59)$$

Now use (55) for λ_{FH} to solve for $d \ln \lambda_{FH}$,

$$d \ln \lambda_{FH} = d \ln A_{FH} - \theta d \ln x_F - \theta dt + \theta d \ln P_H,$$

and, given that from (53)

$$d \ln A_{FH} = (1 - \kappa) d \ln w_F + (1 - \kappa) dt - (1 - \kappa) d \ln Y_H,$$

we obtain,

$$\begin{aligned} d \ln \lambda_{FH} &= [1 - \kappa - \theta(1 - \gamma)] d \ln w_F - \theta \gamma d \ln P_F + (1 - \kappa - \theta) dt \\ &\quad - (1 - \kappa) d \ln Y_H + \theta d \ln P_H. \end{aligned}$$

Likewise, we can use (55) for λ_{HF} to find that

$$d \ln \lambda_{HF} = (\Delta - 1)(1 - \lambda) dt - (1 - \kappa) d \ln w_F - \theta \gamma d \ln P_H + \theta d \ln P_F.$$

Substituting the above equations into (59) implies that

$$[2\kappa - 1 + \theta(1 - \gamma)] d \ln w_F = \theta(1 + \gamma)(d \ln P_H - d \ln P_F) + \kappa d \ln Y_H - [\kappa + \theta + (\Delta - 1)(1 - \lambda)] dt. \quad (60)$$

Now we can substitute (58) into the above expression along with (31) and (33), and simplify to obtain,

$$\begin{aligned} [2\kappa - 1 + \theta(1 - \gamma)] d \ln w_F &= [(\Delta(\kappa - 1) + 1)(1 - \lambda) - \kappa - \theta] dt \\ &\quad + \frac{(1 + \gamma)(1 - \lambda)}{1 + (1 - 2\lambda)\gamma} [(1 - 2\lambda)(\Delta - 1) + (1 - \kappa)\Delta - 1 + \kappa + \theta] dt \\ &\quad + \frac{(1 + \gamma)}{1 + (1 - 2\lambda)\gamma} [2(\kappa - 1)(1 - \lambda) + (1 - 2\lambda)(1 - \gamma)\theta] dw_F. \end{aligned}$$

Multiplying by $[1 + (1 - 2\lambda)\gamma]$, we obtain:

$$C d \ln w_F = (1 - \lambda) D dt, \quad (61)$$

where,

$$C \equiv 2\lambda [(\kappa + \theta)(1 - \gamma) - 1] + (1 + \gamma), \quad (62)$$

and,

$$D \equiv [1 + (1 - 2\lambda)\gamma] \left[\Delta(\kappa - 1) + 1 - \frac{\kappa + \theta}{(1 - \lambda)} \right] + (1 + \gamma) [(2\lambda + \kappa - 2)(1 - \Delta) + \theta]. \quad (63)$$

Now that we have solved for the change in foreign wages dw_F , we still need to obtain the expression for the change in the home price index dP_H . Substitute (57) into (56) and define $\Gamma \equiv [(1 - \lambda)\gamma]/(1 - \lambda\gamma)$ to obtain

$$(1 - \lambda\gamma)\theta \frac{dP_H}{P_H} = - \left\{ \begin{array}{l} \lambda d \ln N_H - (1 - \kappa) d \ln Y_H \\ + \Gamma \{ (1 - \lambda) d \ln N_H - (1 - \lambda)\theta\gamma d \ln P_H - [(1 - \lambda)(1 - \kappa) + \lambda\theta(1 - \gamma)] d \ln w_F \} \\ + (1 - \lambda) [1 - \kappa - \theta(1 - \gamma)] d \ln w_F + (1 - \lambda)(1 - \kappa - \theta) dt \end{array} \right\}.$$

Note that $(1 - \lambda\gamma)\theta - \Gamma(1 - \lambda)\gamma\theta = (1 - \lambda\gamma)\theta \left[1 - \Gamma \frac{(1 - \lambda)\gamma}{(1 - \lambda\gamma)} \right] = (1 - \lambda\gamma)\theta(1 - \Gamma^2) = (1 - \lambda\gamma)\theta(1 - \Gamma)(1 + \Gamma)$, and also that $(1 - \lambda\gamma)\theta(1 - \Gamma) = (1 - \gamma)\theta$. Then we have

$$(1 + \Gamma) \frac{dP_H}{P_H} = - \frac{1}{(1 - \gamma)\theta} \left\{ \begin{array}{l} [\lambda + \Gamma(1 - \lambda)] d \ln N_H - (1 - \kappa) d \ln Y_H \\ + \{ (1 - \Gamma)(1 - \lambda)(1 - \kappa) - [\Gamma\lambda + (1 - \lambda)]\theta(1 - \gamma) \} d \ln w_F \\ + (1 - \lambda)(1 - \kappa - \theta) dt \end{array} \right\}. \quad (64)$$

Finally, substitute (61) into (64), and also use (31) and (33), to obtain:

$$\frac{dP_H}{P_H} = - \frac{(1 - \lambda)dt}{(1 + \Gamma)(1 - \gamma)\theta} \left\{ \begin{array}{l} [\lambda + \Gamma(1 - \lambda)] (\Delta - 1) - (1 - \kappa) \Delta + (1 - \kappa - \theta) \\ + \{ (1 - \Gamma)(1 - \lambda)(1 - \kappa) - [\Gamma\lambda + (1 - \lambda)]\theta(1 - \gamma) \} (D/C) \end{array} \right\}. \quad (65)$$

Notice that when $\gamma = 0$ then $\Gamma = 0$ and $\Delta = \alpha$ and so using (62) and (63),

$$\lim_{\lambda \rightarrow 1} \frac{1}{(1 - \lambda)} \frac{d \ln P_H}{dt} \Big|_{\gamma=t=0} = \frac{1}{\theta} \left[-\alpha\kappa + \frac{(\theta + \kappa)^2}{2(\theta + \kappa) - 1} \right]. \quad (66)$$

Also, when $\gamma = 1$ then $\Gamma = 1$ and $(1 - \Delta) = \sigma(1 - \alpha)$, and so,

$$\lim_{\gamma \rightarrow 1} (1 - \gamma) \frac{d \ln P_H}{dt} \Big|_{t=0} = \frac{(1 - \lambda)}{2\theta} [\kappa\sigma(1 - \alpha) + \theta]. \quad (67)$$

With this, in Appendix C we can now take the final steps to prove Theorem 4 in the main text.

To prove Theorem 3', notice that from (23), using $dT_H = dt(1 - \lambda)Y_H = dt(1 - \lambda)\alpha L/(1 - \tilde{\gamma})$ with $T_H = 0$ in the SFTE, the necessary and sufficient condition for the negative optimal tariff is

$$\frac{dP_H}{P_H} \Big|_{t=0} > \left(\frac{1 - \alpha}{1 - \tilde{\gamma}} \right) dt$$

Using (65) and re-arranging terms, this condition can be re-stated as

$$\frac{d \ln w_F}{dt} \left\{ \frac{[\lambda\Gamma + (1 - \lambda)]\theta + [(1 - \lambda)(\kappa - 1)/(1 - \gamma\lambda)]}{(1 + \Gamma)\theta} \right\} > \left\{ \frac{1 - \lambda}{1 - \tilde{\gamma}} - \frac{1 - \lambda}{(1 + \Gamma)(1 - \gamma)} \right\} - \left\{ \frac{[(\Gamma - 1)(1 - \lambda) + \kappa](1 - \Delta)}{(1 + \Gamma)(1 - \gamma)\theta} \right\} \quad (68)$$

Recall that $\Gamma \equiv \frac{(1-\lambda)\gamma}{1-\lambda\gamma}$ and $\tilde{\gamma} = \gamma \frac{\sigma-1}{\sigma}$ and further simplify (68) to obtain

$$(\theta + \kappa - 1)(1 - \gamma) \frac{d \ln w_F}{dt} > \left[\frac{\theta\gamma}{(1 - \tilde{\gamma})} + (1 - \Delta) \right] (1 - \lambda)(1 - \gamma) - \left[\frac{\theta\gamma}{(1 - \tilde{\gamma})\sigma} + \kappa(1 - \Delta) \right] (1 - \lambda\gamma) \quad (69)$$

From (61), $\frac{d \ln w_F}{dt} = \frac{(1-\lambda)D}{C}$, which is convenient to re-write as

$$\frac{d \ln w_F}{dt} = \frac{E}{C} - \frac{1}{2},$$

where $E \equiv -2\gamma\lambda(1 - \lambda)\Delta\kappa + [(1 - \lambda)(1 - \Delta) - 0.5][2\lambda - (1 + \gamma)]$. Using this expression in (68), the necessary and sufficient condition for the negative optimal tariff becomes:

$$-\frac{E}{C} < -\frac{1}{2} + \frac{1}{\theta + \kappa - 1} \left\{ \left[\frac{\theta\gamma}{(1 - \tilde{\gamma})\sigma} + \kappa(1 - \Delta) \right] \frac{(1 - \lambda\gamma)}{1 - \gamma} - \left[\frac{\theta\gamma}{(1 - \tilde{\gamma})} + (1 - \Delta) \right] (1 - \lambda) \right\}.$$

If condition (36) holds, then a sufficient condition for the negative optimal tariff is

$$-\frac{E}{C} < \frac{1}{2} + (1 - \lambda) \left\{ \frac{\gamma}{1 - \gamma} - \frac{\left[\frac{\theta\gamma}{1 - \tilde{\gamma}} + (1 - \Delta) \right]}{\theta + \kappa - 1} \right\}.$$

Multiplying through by $C > 0$ and simplifying using $1 - \Delta = \frac{1-\alpha}{1-\tilde{\gamma}}$ we reach the following sufficient condition

$$0 < \lambda(\theta + \kappa - 2)(1 - \gamma) + \frac{1}{\theta + \kappa - 1} \left\{ \begin{array}{l} (\theta + \kappa - 1) [\lambda(1 - \gamma) + (1 + \gamma)(1 - \lambda)] \\ + (\theta + \kappa - 1) \left[\frac{2(1-\lambda)^2\gamma}{1-\tilde{\gamma}} + 2\lambda(1 - \lambda)\gamma\theta \right] \\ + \frac{1-\lambda}{1-\tilde{\gamma}} [(1 - \alpha)(\theta + \kappa - 1) [2\lambda\gamma\kappa + (2\lambda - 1)\gamma - 1]] \\ - \frac{1-\lambda}{1-\tilde{\gamma}} [(1 - \alpha)(2\lambda - 1)(1 - \gamma) - (1 - \alpha)2(1 - \lambda)] \\ - \frac{1-\lambda}{1-\tilde{\gamma}} [\theta\gamma(\theta + \kappa - 1)2\lambda(1 - \gamma) - \theta\gamma(2\lambda - 1)(1 - \gamma) - \theta\gamma 2(1 - \lambda)] \end{array} \right\}. \quad (70)$$

To further simplify this condition, we re-write the right-hand side expression as a sum of three terms and find the condition under which each of the terms is positive.

Consider the first term

$$\theta \frac{2(1 - \lambda)^2\gamma}{1 - \gamma} - \left(\frac{1 - \lambda}{1 - \tilde{\gamma}} \right) \theta\gamma 2(1 - \lambda).$$

Since $\tilde{\gamma} > \gamma$, this expression is always positive.

Next, consider the following grouping of terms from the right-hand side of the above inequality:

$$(1 + \gamma) + 2\lambda\gamma\theta - \frac{1 - \alpha}{1 - \tilde{\gamma}},$$

and multiply it though by $\sigma(1 - \tilde{\gamma})$. For the resulting expression to be positive, we need:

$$(1 + \gamma(1 + 2\lambda\theta))(\sigma(1 - \gamma) + \gamma) > (1 - \alpha)\sigma.$$

Simplifying this condition we obtain a simple quadratic (in γ) inequality:

$$\gamma^2(1 + 2\lambda\theta)(1 - \sigma) + \gamma(1 + 2\sigma\lambda\theta) + \alpha\sigma > 0.$$

This expression achieves its maximum at $\gamma^* = \frac{1}{2} \frac{(\sigma-1)(1+2\lambda\theta)}{(1+2\sigma\lambda\theta)}$, at which the value of the quadratic inequality is positive. Hence, since the above inequality is satisfied for both $\gamma = 0$ and $\gamma = 1$, it is positive for all $\gamma \in [0, 1]$.

Finally, combining the remaining terms on the right-hand side of (70) gives

$$0 \leq (\theta + \kappa - 1) \lambda (1 - \gamma) + (\kappa - 1) \frac{2(1 - \lambda)^2 \gamma}{1 - \gamma} + \left(\frac{1 - \lambda}{1 - \tilde{\gamma}} \right) \left\{ \begin{array}{l} (1 - \alpha)(\theta + \kappa - 1) [2\lambda\gamma\kappa + (2\lambda - 1)\gamma] \\ -(1 - \alpha) [(2\lambda - 1)(1 - \gamma) + 2(1 - \lambda)] \\ -\theta\gamma [(\theta + \kappa - 1)2\lambda + (2\lambda - 1)] (1 - \gamma) \end{array} \right\}$$

Further simplification and cancellation of terms results in the following condition that guarantees that (70) is satisfied:

$$0 \leq (1 - \gamma) \left\{ (\theta + \kappa - 1)\lambda + \frac{1 - \lambda}{1 - \tilde{\gamma}} (1 - \alpha) - \theta\gamma ((\theta + \kappa)2\lambda - 1) \right\} + \left\{ \frac{1 - \lambda}{1 - \tilde{\gamma}} [(1 - \alpha)(\theta + \kappa - 1)\gamma(2\lambda\kappa + 2\lambda - 1) - (1 - \alpha)2(1 - \gamma)\lambda] \right\} + (\kappa - 1)2(1 - \lambda)^2\gamma/(1 - \gamma).$$

Re-arranging the terms, we get the following polynomial on the right-hand side of this inequality, which we denote as $f(\gamma)$:

$$f(\gamma) \equiv a(\gamma^2 - \gamma^3) + b(\gamma - \gamma^2) + c(1 - \gamma) + 2(\kappa - 1)(1 - \lambda)^2\gamma \geq 0, \quad (71)$$

where

$$a \equiv \theta [(\theta + \kappa)2\lambda - 1]$$

$$b \equiv \frac{1 - \lambda}{1 - \tilde{\gamma}} (1 - \alpha) [(\theta + \kappa - 1)(2\lambda\kappa + 2\lambda - 1) + (2\lambda - 1)] - \theta [(\theta + \kappa)2\lambda - 1] - (\theta + \kappa - 1)\lambda$$

$$c \equiv (\theta + \kappa - 1)\lambda - \frac{1 - \lambda}{1 - \tilde{\gamma}} (1 - \alpha).$$

Notice that both b and c depend on $\tilde{\gamma} \equiv \gamma \frac{\sigma-1}{\sigma}$ unless $\lambda = 1$. When $\lambda = 1$, then b and c are constants and $f(\gamma)$ is a proper cubic polynomial with $f(0) = c > 0$ and $f(1) = 0$. For $\lambda < 1$, however, that $f(\gamma)$ or more precisely $f(\gamma)(1 - \tilde{\gamma})$ is a higher-order polynomial. Also note that in order to have $c > 0$ when $\gamma = 0$, we require

$$(\theta + \kappa - 1)\lambda > (1 - \lambda)(1 - \alpha).$$

Since $\kappa \equiv \frac{\theta}{\sigma-1} > 1$ and $\lambda \geq (1 - \lambda)$ because $\lambda \geq 0.5$, a sufficient condition for $c > 0$ is $\theta \geq (1 - \alpha)$.

We now investigate values of γ such that $f(\gamma) > 0$ or $f(\gamma) < 0$, to prove Theorem 4. First, consider the change in $f(0)$ and $f(1)$ when λ decreases from unity:

$$\begin{aligned} f(0) \Big|_{\lambda < 1} - f(0) \Big|_{\lambda = 1} &= -(\theta + \kappa - 1)(1 - \lambda) - (1 - \alpha)(1 - \lambda) < 0, \\ f(1) \Big|_{\lambda < 1} - f(1) \Big|_{\lambda = 1} &= 2(\kappa - 1)(1 - \lambda)^2 > 0. \end{aligned}$$

Notice that both $f(0)\Big|_{\lambda < 1}$ and $f(1)\Big|_{\lambda < 1}$ are positive, which follows directly from (71):

$$\begin{aligned} f(0)\Big|_{\lambda < 1} &= c > 0 \text{ for } \theta > (1 - \alpha), \\ f(1)\Big|_{\lambda < 1} &= 2(\kappa - 1)(1 - \lambda)^2 > 0. \end{aligned}$$

Therefore, when λ goes down from unity, $f(0)$ decreases but remains positive, while $f(1)$ increases from zero to a strictly positive number.

What remains to show to prove Theorem 4 is that $f(\gamma^*) < 0$ for some intermediate value $0 < \gamma^* < 1$ provided that λ is sufficiently close to unity. This result follows from differentiating (71) to obtain: $\lim_{\lambda \rightarrow 1} f'(1) = 0$ and $\lim_{\lambda \rightarrow 1} f''(1) < 0$. The latter result follows from taking the second derivative of (71) and its limit when $\lambda \rightarrow 1$:

$$\lim_{\lambda \rightarrow 1} f''(\gamma) < 0 \Leftrightarrow \gamma > \frac{1}{2} - \frac{\theta + \kappa - 1}{\theta(\theta + \kappa)2 - 1} \in (0, 1/2).$$

Because $\lim_{\lambda \rightarrow 1} f(1) = 0$ with $\lim_{\lambda \rightarrow 1} f'(1) = 0$ and $\lim_{\lambda \rightarrow 1} f''(1) < 0$, it follows that $f(\gamma)$ must fall below zero for γ slightly below unity, provided that λ is sufficiently close to unity.

E Equilibrium conditions of the model in relative changes

To gain traction with the model when taking it to the data, we express the equilibrium conditions in relative terms using “hat” notation for the ratio of after-versus-before levels for a given perturbation, that is, $\hat{z} = z'/z$ for any variable z . As shown below, the equilibrium conditions of our model can be expressed as follows, where the change in the price of the input bundle is given by

$$\hat{x}_{i,s} \equiv (\hat{w}_i)^{\gamma_{i,s}} \prod_{s'=1}^S \left(\hat{P}_{i,s'} \right)^{\gamma_{i,s's}}, \quad (72)$$

the change in the price index

$$\hat{P}_{i,s} = \left[(\lambda_{ii,s})^{1-\xi_s} \hat{\Lambda}_{ii}^{\xi_s} + (1 - \lambda_{ii,s})^{1-\xi_s} \hat{\Lambda}_{ji}^{\xi_s} \right]^{-\frac{1}{\xi_s \theta_s}}, \quad (73)$$

where $\xi_s \equiv \frac{(\sigma_s - 1)(1 - \omega_s)}{-\theta_s(\sigma_s - \omega_s) + (\sigma_s - 1)(1 - \omega_s)}$, and $\hat{\Lambda}_{ji} \equiv \sum_{s=1}^S \sum_{j \neq i}^M \lambda_{ji,s} \left[\hat{x}_{j,s} \hat{\tau}_{ji,s} (1 + \widehat{t_{ji,s}}) \right]^{-\theta_s} \hat{A}_{ji,s}$.

The change in trade shares is given by

$$\begin{aligned} \hat{\lambda}_{ii,s} &= \left(\frac{\hat{x}_{i,s}}{\hat{P}_{ii,s}} \right)^{-\theta_s} \left(\frac{\hat{P}_{ii,s}}{\hat{P}_{i,s}} \right)^{-\theta_s \frac{1 - \omega_s}{1 - \sigma_s}} \hat{A}_{ii,s}, \\ \hat{\lambda}_{ji,s} &= \left[\frac{\hat{x}_{j,s} \hat{\tau}_{ji,s} (1 + \widehat{t_{ji,s}})}{\hat{P}_{i,s}^F} \right]^{-\theta_s} \left(\frac{\hat{P}_{i,s}^F}{\hat{P}_{i,s}} \right)^{-\theta_s \frac{1 - \omega_s}{1 - \sigma_s}} \hat{A}_{ji,s}, \end{aligned} \quad (74)$$

where $\hat{P}_{ii,s} = \hat{P}_{i,s}^{\xi_s \frac{\sigma_s - 1 - \theta_s}{\sigma_s - 1}} \left(\frac{\hat{\Lambda}_{ii}}{\lambda_{ii,s}} \right)^{\frac{\xi_s}{1 - \omega_s}}$, $\hat{P}_{i,s}^F = \hat{P}_{i,s}^{\xi_s \frac{\sigma_s - 1 - \theta_s}{\sigma_s - 1}} \left(\frac{\hat{\Lambda}_{ji}}{1 - \lambda_{ii,s}} \right)^{\frac{\xi_s}{1 - \omega_s}}$, and,

$$\hat{A}_{ji,s} \equiv \hat{N}_{j,s} \left(\frac{\widehat{w}_j (1 + t_{ji,s})}{\hat{Y}_{i,s}} \right)^{\frac{\sigma_s - 1 - \theta_s}{\sigma_s - 1}}. \quad (75)$$

The remaining equilibrium conditions are,

$$Y'_{i,s} = \sum_{s'=1}^S \tilde{\gamma}_{i,ss'} \sum_{j=1}^M \frac{\lambda'_{ij,s'}}{1 + t'_{ij,s'}} Y'_{j,s'} + \alpha_{i,s} (w'_i L'_i + T'_i), \quad (76)$$

with tariff revenue given by

$$T'_i = \sum_{s=1}^S \sum_{j \neq i} \frac{t'_{ji,s}}{1 + t'_{ji,s}} \lambda_{ji,s} Y'_{i,s}, \quad (77)$$

trade balance

$$\sum_{s=1}^S \sum_{j=1}^M \frac{\lambda'_{ji,s}}{1 + t'_{ji,s}} Y'_{i,s} = \sum_{s=1}^S \sum_{j=1}^M \frac{\lambda'_{ij,s}}{1 + t'_{ij,s}} Y'_{j,s}, \quad (78)$$

and the final condition for firm entry,

$$\hat{N}_{i,s} \equiv \frac{\sum_{j=1}^M \frac{\widehat{\lambda}_{ij,s}}{1 + t_{ij,s}} Y_{j,s}}{\widehat{w}_i}. \quad (79)$$

As we can see, by expressing the model in this way we can analyze the effects of tariff changes without needing information of fixed entry and operating costs which are, in general, difficult to estimate in the data, especially at the necessary disaggregation. The only identification restriction we will impose is that these fixed have not changed over time. The above system of equations can then be used to study the impact of a change in tariffs ($\widehat{1 + t_{ji,s}}$) (as well as the change in iceberg costs, $\widehat{\tau}_{ji,s}$).

To justify this set of equations, we return to the equilibrium conditions in the main text. The parameters of the model are $\alpha_{i,s}$, σ_s , ω_s , $f_{ii,s}$, $\tau_{ij,s}$, θ_s , δ , $f_{i,s}^E$, $\gamma_{i,s}$, and $\gamma_{i,ss'}$, subject to the constraints $\sum_{s=1}^S \alpha_{i,s} = 1$ and $\sum_{s'=1}^S \gamma_{i,ss'} + \gamma_{i,s} = 1$. The equilibrium conditions to solve the model are then as follows: $M \times M \times S$ ZCP conditions (10),

$$\begin{aligned} \varphi_{ii,s}^* &= \left(\frac{\sigma_s}{\sigma_s - 1} \right) \left(\frac{\sigma_s w_i f_{ii,s}}{Y_{i,s}} \right)^{\frac{1}{\sigma_s - 1}} \frac{x_{i,s}}{P_{ii,s}} \left(\frac{P_{ii,s}}{P_{i,s}} \right)^{\frac{\omega_s - 1}{\sigma_s - 1}} \\ \varphi_{ij,s}^* &= \left(\frac{\sigma_s}{\sigma_s - 1} \right) \left(\frac{\sigma_s w_i f_{ij,s}}{Y_{j,s}} \right)^{\frac{1}{\sigma_s - 1}} \frac{x_{i,s} \tau_{ij,s} (1 + t_{ij,s})^{\frac{\sigma_s}{\sigma_s - 1}}}{P_{j,s}^F} \left(\frac{P_{j,s}^F}{P_{j,s}} \right)^{\frac{\omega_s - 1}{\sigma_s - 1}}; \end{aligned}$$

$M \times S$ goods market equilibria (18),

$$Y_{i,s} = \frac{\sigma_s - 1}{\sigma_s} \sum_{s'=1}^S \gamma_{i,ss'} \sum_{j=1}^M \frac{\lambda_{ij,s'}}{1 + \tau_{ij,s'}} Y_{j,s'} + \alpha_{i,s} (w_i L_i + T_i);$$

$M \times S$ sectoral prices (13),

$$P_{i,s} = \left((P_{ii,s})^{1-\omega_s} + (P_{i,s}^F)^{1-\omega_s} \right)^{\frac{1}{1-\omega_s}}$$

where

$$P_{ii,s} = \left(\varphi_{ii,s}^*{}^{-\theta_s} N_{i,s} \left(\frac{\sigma_s}{\sigma_s - 1} \frac{x_{i,s}}{\tilde{\varphi}_{ii,s}} \right)^{1-\sigma_s} \right)^{\frac{1}{1-\sigma_s}}$$

$$P_{i,s}^F = \left(\sum_{j \neq i}^M \varphi_{ji,s}^*{}^{-\theta_s} N_{j,s} \left(\frac{\sigma_s}{\sigma_s - 1} \frac{x_{j,s} \tau_{ji,s} (1 + t_{ji,s})}{\tilde{\varphi}_{ji,s}} \right)^{1-\sigma_s} \right)^{\frac{1}{1-\sigma_s}};$$

$M \times M \times S$ expenditure shares (15),

$$\lambda_{ii,s} = \varphi_{ii,s}^*{}^{-\theta_s} N_{i,s} \left(\frac{\sigma_s}{\sigma_s - 1} \frac{x_{i,s}}{\tilde{\varphi}_{ii,s}} \frac{1}{P_{ii,s}} \right)^{1-\sigma_s} \left(\frac{P_{ii,s}}{P_{i,s}} \right)^{1-\omega_s},$$

$$\lambda_{ji,s} = \varphi_{ji,s}^*{}^{-\theta_s} N_{j,s} \left(\frac{\sigma_s}{\sigma_s - 1} \frac{\tau_{ji,s} x_{j,s} (1 + t_{ji,s})}{\tilde{\varphi}_{ji,s} P_{i,s}^F} \right)^{1-\sigma_s} \left(\frac{P_{i,s}^F}{P_{i,s}} \right)^{1-\omega_s};$$

$M \times S$ free entry conditions (11),

$$\sum_{j=1}^M f_{ij,s} \varphi_{ij,s}^*{}^{-\theta_s} = \frac{\theta_s - \sigma_s + 1}{\sigma_s - 1} f_{i,s}^E.$$

$M \times S$ input bundle costs (5),

$$x_{i,s} \equiv (w_i / \gamma_{i,s})^{\gamma_{i,s}} \prod_{s'=1}^S (P_{i,s'} / \gamma_{i,s's})^{\gamma_{i,s's}};$$

and M trade balances (17),

$$\sum_{s=1}^S \sum_{j=1}^M \frac{\lambda_{ji,s}}{1 + \tau_{ji,s}} Y_{i,s} = \sum_{s=1}^S \sum_{j=1}^M \frac{\lambda_{ij,s}}{1 + \tau_{ij,s}} Y_{j,s}.$$

We now show how we can express the model in relative changes. Consider the impact of a change in iceberg costs $\tau_{ji,s}$ and/or tariffs $t_{ji,s}$. Denote equilibrium prices and allocations under policy vector $(\boldsymbol{\tau}, \mathbf{t})$, by the vector y and equilibrium prices and allocations under policy vector $(\boldsymbol{\tau}', \mathbf{t}')$, by the vector y' . In the hat notation, we let $\hat{y} = y'/y$ denote the relative change in equilibrium prices and allocations after a change in policy, for any element y of the vector y . Similarly, $\hat{\tau}_{ji,s} = \tau'_{ji,s} / \tau_{ji,s}$ and $(1 + \hat{t}_{ji,s}) = (1 + t'_{ji,s}) / (1 + t_{ji,s})$.

Using input bundle costs (5) before and after a change in policy, we can easily obtain (72). We then proceed to solve for the change in sectoral prices. First we solve for prices after a change in policy using equation (13),

$$(P'_{i,s})^{1-\omega_s} = \left[(P'_{ii,s})^{1-\omega_s} + (P'_{i,s}{}^F)^{1-\omega_s} \right]$$

$$P'_{ii,s} = \left(\varphi_{ii,s}^{*'}^{-\theta_s} N'_{i,s} \left(\frac{\sigma_s}{\sigma_s - 1} \frac{x'_{i,s}}{\tilde{\varphi}'_{ii,s}} \right)^{1-\sigma_s} \right)^{\frac{1}{1-\sigma_s}}$$

$$P_{i,s}^{F'} = \left(\sum_{j \neq i}^M \varphi_{ji,s}^{*'}{}^{-\theta_s} N'_{j,s} \left(\frac{\sigma_s}{\sigma_s - 1} \frac{\tau'_{ji,s} x'_{j,s} (1 + t'_{ji,s})}{\tilde{\varphi}'_{ji,s}} \right)^{1-\sigma_s} \right)^{\frac{1}{1-\sigma_s}}.$$

Next we use the definition of expenditure shares before the change in policy (15), and multiply and divide each expression in the summation by (15),

$$\left(\hat{P}_{ii,s} \right)^{1-\sigma_s} \left(\frac{P_{ii,s}}{\hat{P}_{ii,s}} \right)^{1-\omega_s} = \lambda_{ii,s} \left(\widehat{\varphi}_{ii,s}^* \right)^{\sigma_s-1-\theta_s} \hat{N}_{i,s} (\hat{x}_{i,s})^{1-\sigma_s} \quad (80)$$

$$\left(\hat{P}_{i,s}^F \right)^{1-\sigma_s} \left(\frac{P_{i,s}^F}{\hat{P}_{i,s}^F} \right)^{1-\omega_s} = \sum_{j \neq i}^M \lambda_{ji,s} \left(\widehat{\varphi}_{ji,s}^* \right)^{\sigma_s-1-\theta_s} \hat{N}_{j,s} \left(\widehat{\tau}_{ji,s} \hat{x}_{j,s} (1 + \widehat{t}_{ji,s}) \right)^{1-\sigma_s}, \quad (81)$$

where we use the fact that $\widehat{\varphi}_{ji,s}^* = \widehat{\varphi}_{ji,s}$. Now solve for the ZCP conditions (10) in relative changes,

$$\widehat{\varphi}_{ii,s}^* = \left(\frac{\hat{w}_i}{\hat{Y}_{i,s}} \right)^{\frac{1}{\sigma_s-1}} \frac{\hat{x}_{i,s}}{\hat{P}_{ii,s}} \left(\frac{\hat{P}_{ii,s}}{\hat{P}_{i,s}} \right)^{\frac{\omega_s-1}{\sigma_s-1}}, \quad (82)$$

$$\widehat{\varphi}_{ji,s}^* = \left(\frac{\hat{w}_j}{\hat{Y}_{i,s}} \right)^{\frac{1}{\sigma_s-1}} \frac{\hat{x}_{j,s} \widehat{\tau}_{ji,s} (1 + \widehat{t}_{ji,s})}{\hat{P}_{i,s}^F} \left(\frac{\hat{P}_{i,s}^F}{\hat{P}_{i,s}} \right)^{\frac{\omega_s-1}{\sigma_s-1}} \quad (83)$$

and substitute it into (80) and (81) to obtain

$$\hat{P}_{ii,s} = \hat{P}_{i,s}^{\xi_s \frac{\sigma_s-1-\theta_s}{\sigma_s-1}} \left(\frac{\lambda_{ii,s} [\hat{x}_{i,s}]^{-\theta_s} \hat{A}_{i,s}}{\lambda_{ii,s}} \right)^{\frac{\xi_s}{1-\omega_s}},$$

$$\hat{P}_{i,s}^F = \hat{P}_{i,s}^{\xi_s \frac{\sigma_s-1-\theta_s}{\sigma_s-1}} \left(\frac{\sum_{j \neq i}^M \lambda_{ji,s} [\hat{x}_{j,s} \widehat{\tau}_{ji,s} (1 + \widehat{t}_{ji,s})]^{-\theta_s} \hat{A}_{ji,s}}{(1 - \lambda_{ii,s})} \right)^{\frac{\xi_s}{1-\omega_s}},$$

where we define

$$\xi_s \equiv \frac{(\sigma_s - 1)(1 - \omega_s)}{-\theta_s (\sigma_s - \omega_s) + (\sigma_s - 1)(1 - \omega_s)}$$

$$\hat{A}_{i,s} \equiv \hat{N}_{i,s} \left(\frac{\hat{w}_i}{\hat{Y}_{i,s}} \right)^{\frac{\sigma_s-1-\theta_s}{\sigma_s-1}}$$

$$\hat{A}_{ji,s} \equiv \hat{N}_{j,s} \left(\frac{\hat{w}_j (1 + \widehat{t}_{ji,s})}{\hat{Y}_{i,s}} \right)^{\frac{\sigma_s-1-\theta_s}{\sigma_s-1}}.$$

and after combining terms using

$$\left(\hat{P}_{i,s}\right)^{1-\omega_s} = \left(\frac{P_{ii,s}^F}{P_{i,s}}\right)^{1-\omega_s} \left(\hat{P}_{ii,s}\right)^{1-\omega_s} + \left(\frac{P_{i,s}^F}{P_{i,s}}\right)^{1-\omega_s} \left(\hat{P}_{i,s}^F\right)^{1-\omega_s},$$

we obtain (73)

$$\hat{P}_{i,s} = \left((\lambda_{ii,s})^{1-\xi_s} \hat{\Lambda}_{ii}^{\xi_s} + (1 - \lambda_{ii,s})^{1-\xi_s} \hat{\Lambda}_{ji}^{\xi_s} \right)^{-\frac{1}{\xi_s \theta_s}}$$

and where $\hat{\Lambda}_{ii} = \left(\lambda_{ii,s} [\hat{x}_{i,s}]^{-\theta_s} \hat{A}_{i,s} \right)$, and $\hat{\Lambda}_{ji} = \sum_{j \neq i}^M \lambda_{ji,s} \left[\hat{x}_{j,s} \widehat{\tau_{ji,s}} (1 + \widehat{t_{ji,s}}) \right]^{-\theta_s} \hat{A}_{ji,s}$.

Expenditure shares in relative changes are solved in a similar way. Start from solving for the expenditure share after a change in policy using (15)

$$\lambda'_{ji,s} = \varphi_{ji,s}^{*'} N'_{j,s} \left(\frac{\sigma_s}{\sigma_s - 1} \frac{\tau'_{ji,s} x'_{j,s} (1 + t'_{ji,s})}{P'_{i,s} \tilde{\varphi}'_{ji,s}} \right)^{1-\sigma_s},$$

$$\lambda'_{ii,s} = \varphi_{ii,s}^{*'} N'_{i,s} \left(\frac{\sigma_s}{\sigma_s - 1} \frac{x'_{i,s}}{\tilde{\varphi}'_{ii,s} P'_{ii,s}} \right)^{1-\sigma_s} \left(\frac{P'_{ii,s}}{P'_{i,s}} \right)^{1-\omega_s},$$

$$\lambda'_{ji,s} = \varphi_{ji,s}^{*'} N'_{j,s} \left(\frac{\sigma_s}{\sigma_s - 1} \frac{\tau'_{ji,s} x'_{j,s} (1 + t'_{ji,s})}{\tilde{\varphi}'_{ji,s} P'_{i,s}{}^F} \right)^{1-\sigma_s} \left(\frac{P'_{i,s}{}^F}{P'_{i,s}} \right)^{1-\omega_s};$$

take the ratio of this expression relative to the expenditure share before the change in policy,

$$\frac{\lambda'_{ii,s}}{\lambda_{ii,s}} = \left(\widehat{\varphi_{ii,s}^*} \right)^{\sigma_s - 1 - \theta_s} \hat{N}_{i,s} \left(\frac{\hat{x}_{i,s}}{\hat{P}_{ii,s}} \right)^{1-\sigma_s} \left(\frac{\hat{P}_{ii,s}}{\hat{P}_{i,s}} \right)^{1-\omega_s}$$

$$\frac{\lambda'_{ji,s}}{\lambda_{ji,s}} = \left(\widehat{\varphi_{ji,s}^*} \right)^{\sigma_s - 1 - \theta_s} \hat{N}_{j,s} \left(\frac{\widehat{\tau_{ji,s}} \hat{x}_{j,s} (1 + \widehat{t_{ji,s}})}{\hat{P}_{i,s}^F} \right)^{1-\sigma_s} \left(\frac{\hat{P}_{i,s}^F}{\hat{P}_{i,s}} \right)^{1-\omega_s}.$$

Now use the ZCP condition in relative changes (82) and combine terms to obtain the expenditure shares in relative changes (74),

$$\hat{\lambda}_{ii,s} = \left[\frac{\hat{x}_{i,s}}{\hat{P}_{ii,s}} \right]^{-\theta_s} \left(\frac{\hat{P}_{ii,s}}{\hat{P}_{i,s}} \right)^{-\theta_s \frac{1-\omega_s}{1-\sigma_s}} \hat{A}_{i,s}$$

$$\hat{\lambda}_{ji,s} = \left[\frac{\widehat{\tau_{ji,s}} \hat{x}_{j,s} (1 + \widehat{t_{ji,s}})}{\hat{P}_{i,s}^F} \right]^{-\theta_s} \left(\frac{\hat{P}_{i,s}^F}{\hat{P}_{i,s}} \right)^{-\theta_s \frac{1-\omega_s}{1-\sigma_s}} \hat{A}_{ji,s}$$

The goods market equilibrium conditions (76) and the trade balance equilibrium conditions (78) are given by (17) and (18) at policy $(\boldsymbol{\tau}', \mathbf{t}')$.

Finally, to solve for the change in entry, note that, from the free entry condition (11) and

imposing trade balance (17), we obtain

$$N_{i,s} = \frac{E_{ii,s} + E_{i,s}}{w_i f_{i,s}^E \left(\frac{\theta_s \sigma_s}{\sigma_s - 1} \right)},$$

and expressing this in relative terms we end up with (79).

F Domestic Sales, Expenditure Shares and Final Good Shares

In this Appendix we show how using information on tariffs, trade flows, production and with the estimated trade elasticities we can solve for the model domestic sales, expenditure shares and finished good shares. We then show how to aggregate tariffs in a model consistent way.

Domestic Sales To calculate domestic sales ($E_{ii,s}$) by country and sector, we need data on gross production ($GO_{i,s}$), and total exports ($E_{i,s} \equiv \sum_{j \neq i} E_{ij,s} = \sum_{j \neq i} \frac{\lambda_{ij,s}}{1+t_{ij,s}} Y_{j,s}$). Recall that gross production in sector s is given by $\frac{\sigma_s - 1}{\sigma_s} \sum_{j=1}^M \frac{\lambda_{ij,s}}{1+t_{ij,s}} Y_{j,s}$. We want to solve for $E_{ii,s} = \lambda_{ii,s} Y_{i,s}$. Therefore, domestic sales are given by

$$E_{ii,s} = \frac{\sigma_s}{\sigma_s - 1} GO_{i,s} - E_{i,s}.$$

Expenditure Shares Denote by $Y_{ij,s}$ the total expenditure of country j on sector s goods from country i . Total expenditure includes tariffs, therefore in order to calculate $Y_{ij,s}$ we take imports and multiply by tariffs. We do this at the sectoral level, namely $Y_{ij,s} = E_{ij,s} (1 + t_{ij,s})$. Note that $Y_{ii,s} = E_{ii,s}$. We then calculate expenditure shares as

$$\lambda_{ij,s} = Y_{ij,s} / \sum_i Y_{ij,s}, \quad (84)$$

where $\sum_i Y_{ij,s} = Y_{j,s}$ is total expenditure.

Finished goods consumption shares To calculate final consumption share, $\alpha_{i,s}$ we take the total expenditure of sector s goods, subtract the intermediate goods expenditure and divide by total final absorption. Namely

$$\alpha_{i,s} = \frac{Y_{i,s} - \sum_{s'=1}^S \gamma_{i,ss'} GO_{i,s'}}{w_i L_i + T_i},$$

where $w_i L_i$ is total value added and T_i tariff revenue which we calculate as $T_i = \sum_{s=1}^S \sum_{j \neq i} t_{ji,s} E_{ji,s}$.

Tariff aggregation from the good level An important task is to find a model consistent procedure to aggregate goods-level tariffs at a fine level to the correct sectoral-level equivalent at a coarser level.

We make the assumption that in country j and sector s there are $G_{j,s}$ goods indexed by g . Our goal is to solve for a sectoral tariff $t_{ji,s}$ such that the change in this sectoral tariff ($1 + t_{ji,s}$)

is equivalent to the effect of the observed changes in tariffs at a goods level $1 + t_{ji,s}(g)$, for $g = 1, \dots, G_{j,s}$.

We calculate $\lambda_{ij,s}(g)$, namely the expenditure share on g goods as

$$\lambda_{ij,s}(g) = E_{ij,s}(g) (1 + t_{ij,s}(g)) \Big/ \sum_i Y_{ij,s}. \quad (85)$$

Note that the expenditure share from country i on all $G_{i,s}$ goods from country j has to equal to the total expenditure on sector s goods from country j , therefore

$$\sum_{g=1}^{G_{j,s}} \lambda_{ji,s}(g) = \lambda_{ji,s}.$$

Then the trade balance condition (17) can be re-written by adding the summation over goods g as

$$\sum_{s=1}^S \sum_{j \neq i} \sum_{g=1}^{G_{j,s}} \frac{\lambda_{ji,s}(g)}{1 + t_{ji,s}(g)} Y_{i,s} = \sum_{s=1}^S \sum_{j \neq i} \sum_{g=1}^{G_{i,s}} \frac{\lambda_{ij,s}(g)}{1 + t_{ij,s}(g)} Y_{j,s}. \quad (86)$$

In order for (86) to be equivalent to (17), it is apparent that the tariffs must satisfy

$$\frac{\lambda_{ji,s}}{1 + t_{ji,s}} \equiv \sum_{g=1}^{G_{j,s}} \frac{\lambda_{ji,s}(g)}{1 + t_{ji,s}(g)}. \quad (87)$$

Using (84) , (85) and some manipulation we obtain a tariff aggregation formula:

$$(1 + t_{ji,s}) = \frac{\sum_{g=1}^{G_{j,s}} E_{ji,s}(g) (1 + t_{ji,s}(g))}{\sum_{g=1}^{G_{j,s}} E_{ji,s}(g)} \iff t_{ji,s} = \frac{\sum_{g=1}^{G_{j,s}} E_{ji,s}(g) t_{ji,s}(g)}{\sum_{g=1}^{G_{j,s}} E_{ji,s}(g)} \quad (88)$$

In other words, when aggregating over a finer set of goods g to a coarse sector level, the sectoral aggregate tariff factor $1 + t_{ji,s}$ should be computed as a trade-weighted mean of the tariff factors across the various goods g . The analogous condition must hold for computing $1 + t'_{ji,s}$ in the new equilibrium, evaluating the shares $\lambda'_{ji,s}(g)/\lambda'_{ji,s}$ in this new equilibrium. Clearly, if there is a uniform change in the goods-level tariffs $1 + t_{ji,s}(g)$ then the new shares would equal their initial values $\lambda_{ji,s}(g)/\lambda_{ji,s}$, and in that case it is obvious from the above that the change in $1 + t_{ji,s}(g)$ would equal the change in $1 + t_{ji,s}$, i.e., the change in the sectoral tariff just equals the uniform change in the goods-level tariffs.